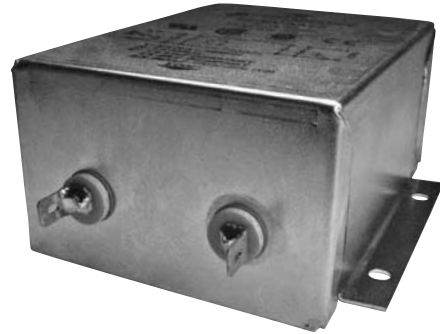


F2800 RFI Filters

High Performance

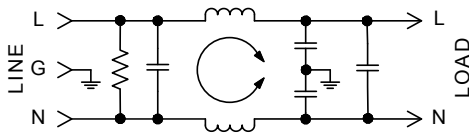
SINGLE PHASE FILTERS



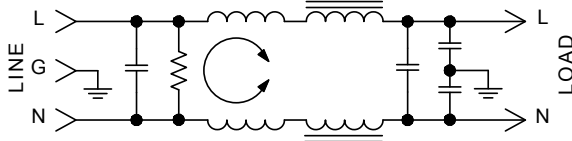
Features:

- Designed for VDE "A" and FCC "B" Switching Power Supply Applications
- Low-Leakage Current
- Compact Case Sizes in Current Ratings up to 15A
- Effective Reduction of Common Mode and Differential Mode Noise from 100KHz to 30MHz

F2800 Simplified Schematic 3 & 6Amp



F2800 Simplified Schematic 10 & 15Amp



Specifications:

Rated Voltage: 250VAC Maximum - 50/60 Hz

| | | |
|-----------------------|--------|--------|
| Rated Current: | 115VAC | 250VAC |
| | 3A | 1.5A |
| | 6A | 4A |
| | 10A | 6A |
| | 15A | 12A |

Current Overload: 6X for 8 seconds

Hi-Pot Test (1 min):

| | |
|----------------|---------|
| Line to Ground | 1500VAC |
| Line to Line | 1768VDC |

Insulation Resistance: $9 \times 10^9 \Omega$ at 100VDC

Ambient Temperature: 40°C Max. at rated current

Humidity Range: 0% to 95% R.H.

Termination:

A: QC – Quick Connect
B: Wire

Maximum Leakage Current:

| | |
|---------------------|--------------|
| Each Line to Ground | F2800 |
| 115VAC, 60Hz: | 0.25mA |
| 250VAC, 50Hz: | 0.40mA |

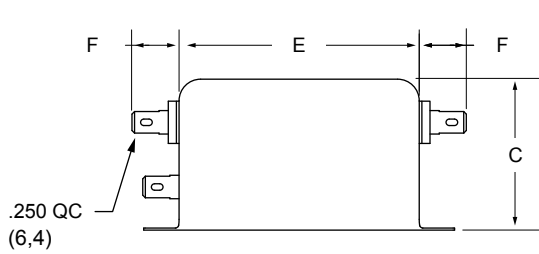
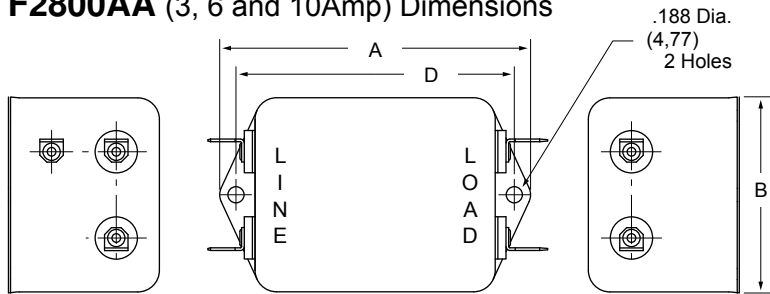
Agency Approvals:



| Nominal Current Rating | Part Number | Termination Line/Load | MINIMUM INSERTION LOSS - dB (50 ohm Circuit) | | | | | | | | | | |
|------------------------|------------------------|-----------------------|----------------------------------------------|-----------------|-----|-----|-----|-----|-----|----|----|--|--|
| | | | MODE | Frequency - MHz | | | | | | | | | |
| | | | | .01 | .05 | .15 | .50 | 1.0 | 5.0 | 10 | 30 | | |
| 3A | F2800AA03 F2800BB03 | QC/QC Wire/Wire | Common | 10 | 30 | 35 | 35 | 35 | 40 | 45 | 50 | | |
| | | | Differential | 5 | 25 | 50 | 60 | 65 | 50 | 45 | 45 | | |
| 6A | F2800AA06 F2800BB06 | QC/QC Wire/Wire | Common | 5 | 20 | 30 | 35 | 40 | 40 | 40 | 50 | | |
| | | | Differential | 5 | 10 | 40 | 60 | 60 | 50 | 50 | 45 | | |
| 10A | F2800AA10 F2800BB10 | QC/QC Wire/Wire | Common | 5 | 15 | 25 | 30 | 35 | 40 | 45 | 50 | | |
| | | | Differential | 7 | 20 | 50 | 60 | 60 | 60 | 60 | 55 | | |
| 15A | F2800AA15 F2800BB15 | QC/QC Wire/Wire | Common | 8 | 21 | 29 | 33 | 36 | 38 | 45 | 50 | | |
| | | | Differential | 10 | 30 | 70 | 70 | 70 | 70 | 70 | 60 | | |

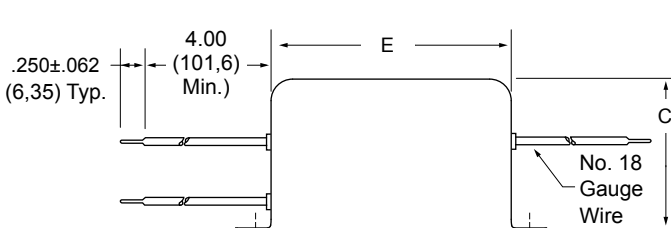
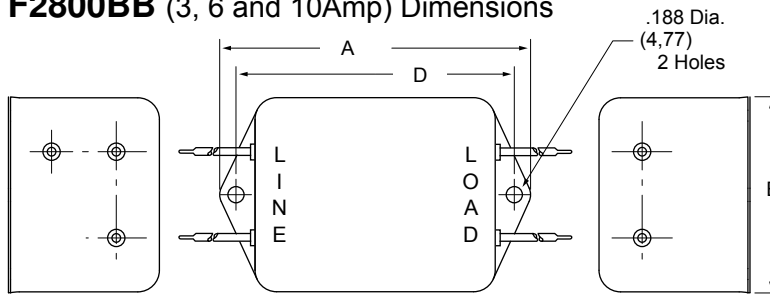


F2800AA (3, 6 and 10Amp) Dimensions



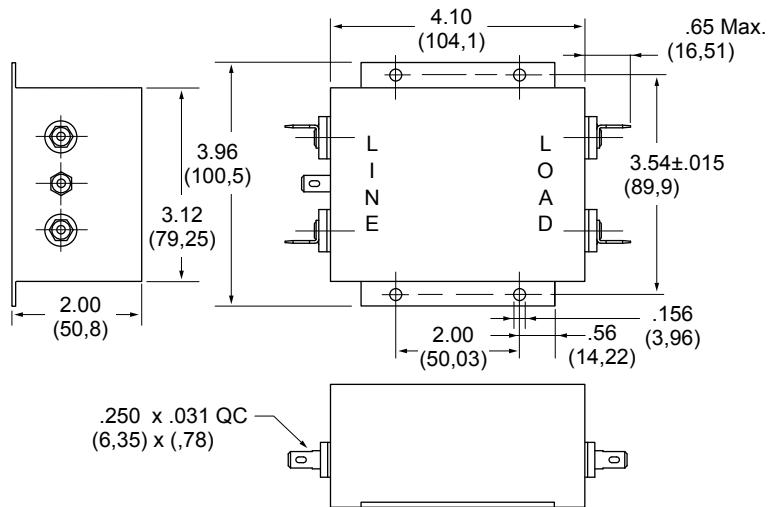
| Amps | A | B | C | D | E | F |
|------|-----------------|-----------------|-----------------|------------------|-----------------|----------------|
| 3A | 3.310 (84,1) | 2.000 (50,8) | 1.500 (38,2) | 2.940 (74,7) | 2.500 (63,5) | .550 (14,0) |
| 6A | 3.310 (84,1) | 2.000 (50,8) | 1.500 (38,2) | 2.940 (74,7) | 2.500 (63,5) | .550 (14,0) |
| 10A | 4.44 (113) | 2.250 (57,1) | 1.750 (44,4) | 4.063 (103,2) | 3.630 (92,2) | .650 (16,5) |

F2800BB (3, 6 and 10Amp) Dimensions



| Amps | A | B | C | D | E |
|------|-----------------|-----------------|-----------------|------------------|-----------------|
| 3A | 3.310 (84,1) | 2.000 (50,8) | 1.500 (38,1) | 2.940 (74,7) | 2.500 (63,5) |
| 6A | 3.310 (84,1) | 2.000 (50,8) | 1.500 (38,1) | 2.940 (74,7) | 2.500 (63,5) |
| 10A | 4.690 (119) | 2.250 (57,1) | 1.750 (44,4) | 4.063 (103,2) | 3.630 (92,2) |

**F2800AA
F2800BB
(15Amp)
Dimensions**



Dimensions are in inches and millimeters unless otherwise specified. Values in parentheses are metric equivalents.

