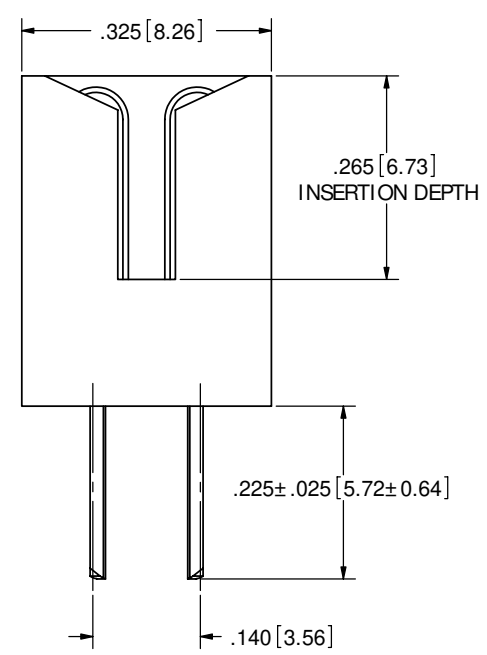
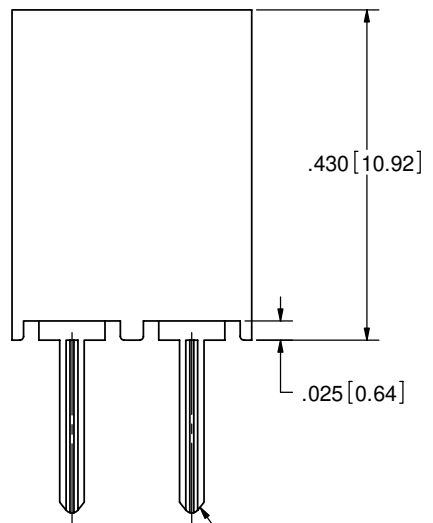
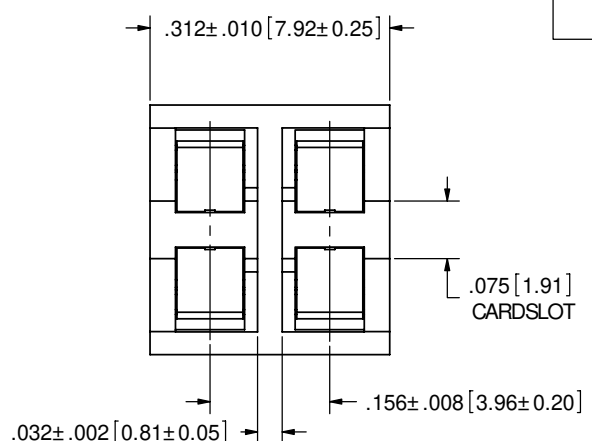
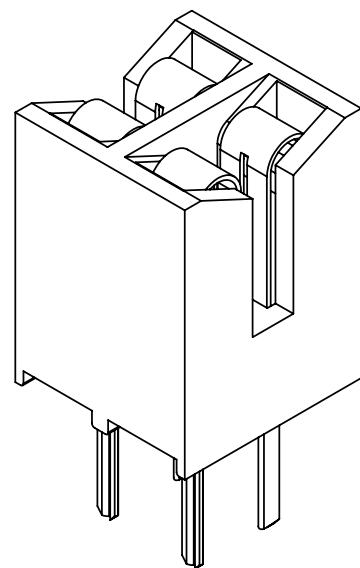


REVISIONS				
REV.	ECC. NO	DESCRIPTION	DATE	BY
A	1409	INITIAL RELEASE	7/2/2007	MNH



- NOTES:
- INSULATOR MATERIAL: BLACK PBT
 - CONTACT MATERIAL: PHOSPHOR BRONZE
 - PLATING: .000050" NICKEL UNDERPLATE
CONTACT SURFACE: .000010" GOLD
TERMINATION: .000100" PURE TIN, MATTE
 - OPERATING TEMPERATURE: -65°C TO +125°C @ 3 AMPS PER PIN
-65°C TO +105°C @ 5 AMPS PER PIN
 - PROCESSING TEMP: 260°C FOR 10 SECONDS MAX
 - UL FLAMMABILITY RATING: 94V-0
 - VOLTAGE RATING: 1800 VDC MINIMUM AT SEA LEVEL
 - VOLTAGE DROP: 30 MILLI VOLT AT RATED CURRENT
 - INSULATION RESISTANCE: 5000 MEGA OHM
 - CONNECTOR IDENTIFICATION: THE PART SHALL BE MARKED WITH A PART NUMBER AND BARCODE
 - BOARD THICKNESS ACCOMMODATED: .062±.008" [1.57]
 - BOARD INSERTION FORCE: 8 OZ MAX PER CONTACT PAIR WHEN USING A .062" [1.57] TEST BLADE.
 - BOARD WITHDRAWAL FORCE: 1 OUNCE MINIMUM PER CONTACT PAIR USING .062" [1.57] PCB
 - MODIFICATION: NO CONTACT ID, MOLDED KEY BETWEEN POSITION 1 AND 2

FITS Ø.051 MIN HOLE

REF: EBM02DRKB-S587

CUSTOMER COPY



RoHS COMPLIANT

UNLESS OTHERWISE SPECIFIED: DIMENSIONS ARE IN INCHES [MM] TOLERANCES: ANGULAR: ± 1° XX= ± .02 [.508] .XXX= ± .005 [.1270] .XXXX= ± .0005 [.0127] PARENTHETICAL INFORMATION IS FOR REFERENCE ONLY		DATE: 7-2-07 NAME: MNH	SULLINS ELECTRONICS DESCRIPTION: EDGECARD, .156 CC LP PART NUMBER: MPL-3156-02-DS-4K(O2E)(1-2MK) SIZE: C DWG. NO.: C10945 REV: A SCALE: 8:1 SHEET 1 OF 1
THE INFORMATION HEREIN CONTAINS PROPRIETARY INFORMATION OF SULLINS ELECTRONICS AND IS NOT TO BE REPRODUCED, USED OR DISCLOSED TO OTHERS FOR ANY PURPOSE EXCEPT AS SPECIFICALLY AUTHORIZED IN WRITING BY AN OFFICER OF SULLINS ELECTRONICS. INTERPRET DIMENSIONS AND GEOMETRIC TOLERANCING PER: ANS Y14.5-1984			