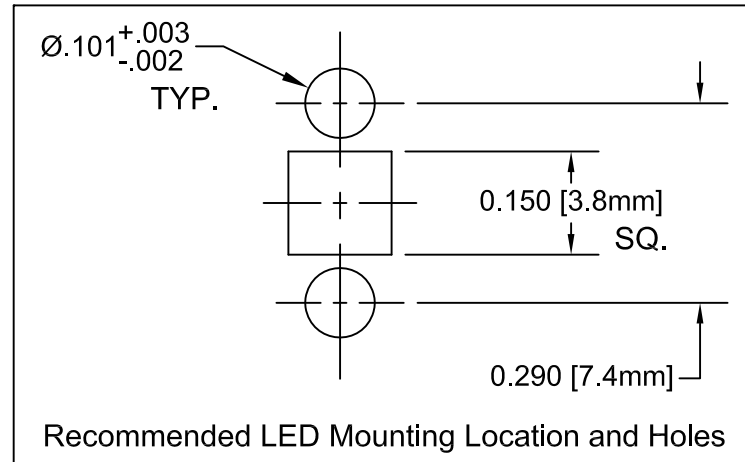
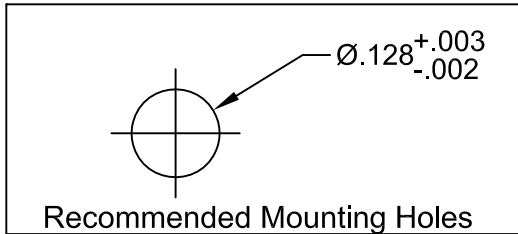
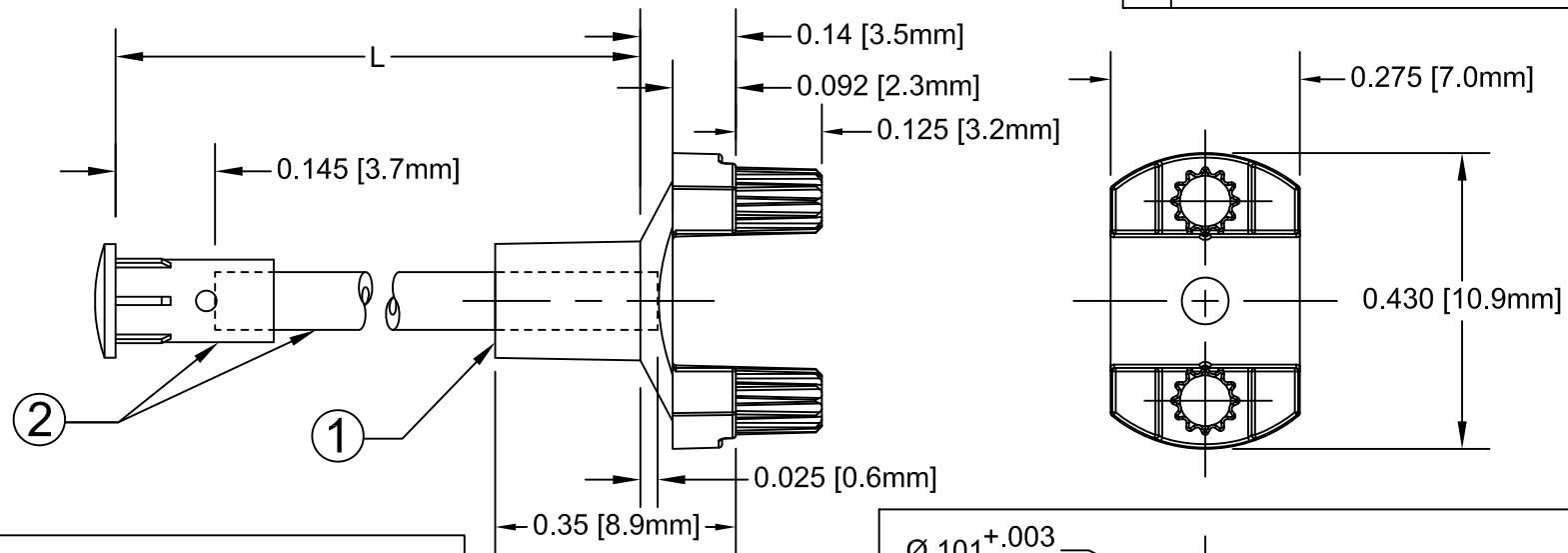


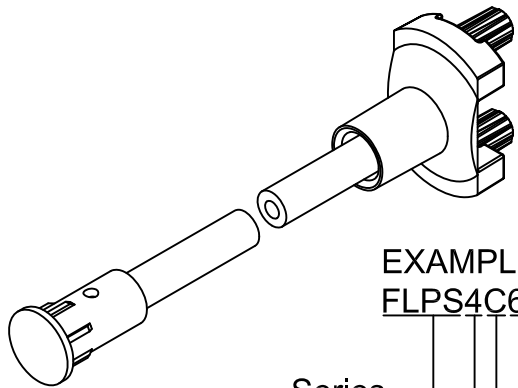
ITEM	Q'TY	PART NUMBER	PART DESCRIPTION
1	1	SMFLP	Adapter, Surface Mount Flexible Light Pipe
2	1	PM4-C1522-XX.XX	4mm Circular Lens FLP Indicator

REV.	DESCRIPTION	DATE	APPROVED
A	Engineering Release.	07/11/12	T. Y.
B	Updated Table For Length "L"	12/12/12	T. Y.



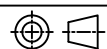
" L " *	Tolerance
1.0" ~ 16.0"	±0.050"
16.1" ~ 40.0"	±0.15"
40.1" ~ 80.0"	±0.30"
80.1" ~ 500.0"	±0.5%

* Available in 0.1" increments only



EXAMPLE:
FLPS4C6.5-E
 Series ———
 Lens Size ———
 Lens Shape ———
 Adaptor Sty ———
 Fiber Length in 0.1" Increments

NOTE: SMFLP ADAPTER SHIPPED NON-ASSEMBLED

STANDARD TOLERANCE (UNLESS OTHERWISE SPECIFIED)		BIVAR [®] 4 THOMAS, IRVINE, CA. 92618 TEL: (949) 951-8808 FAX: (949) 951-3974	
DECIMALS	ANGULAR		
.X ±.1	X° ± 1°	 TITLE: 4mm Circular Lens Flexible Light Pipe FLPS1522 Indicator w/ SMFLP Adaptor PART NO: FLPS4CX.X-E REVISION: B	
.XX ±.02			
.XXX ±.010			
DESIGNED: Ty Yin	DATE: 07/11/12	CAGE CODE : 32559	SHEET # 1 OF 1
CHECKED: B. Oliver	DATE: 07/11/12	CAD GENERATED DOCUMENT, DO NOT MEASURE DRAWING.	