

**OBSOLESCE PART**  
 EC NO: SH2006-0566  
 DRWN: BCHENZ6 2006/05/29  
 CHKD: GRATE MA 2006/05/29  
 APPR: JNCHEN 2006/05/30

QUALITY SYMBOLS  
 ▽=0  
 ▽=0

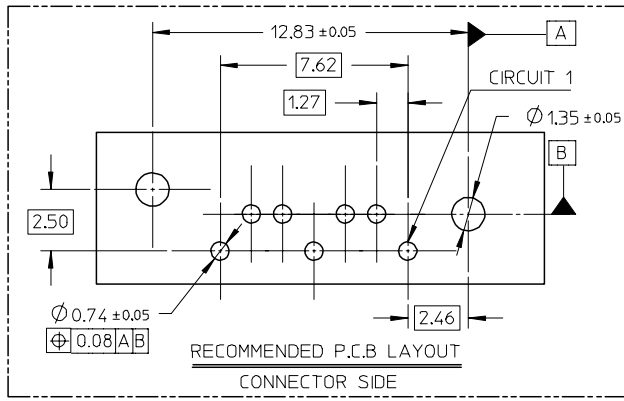
GENERAL TOLERANCES (UNLESS SPECIFIED)		DIMENSION STYLE	
		MM ONLY	
	mm		INCH
4 PLACES	± ---	± ---	± ---
3 PLACES	± ---	± ---	± ---
2 PLACES	± 0.15	± ---	± ---
1 PLACE	± 0.25	± ---	± ---
ANGULAR		± 1/2°	

DRAWN BY DATE  
 GRATE MA 2004/02/02  
 CHECKED BY DATE  
 YA JUN 2004/02/02  
 APPROVED BY DATE  
 SAM 2004/02/02  
 MATERIAL NO.  
**SEE SHEET 2**

SCALE 5:1  
 DESIGN UNITS METRIC  
 THIRD ANGLE PROJECTION  
**TITLE**  
 HIGH SPEED CONNECTOR  
 1.27MM PITCH VERTICAL  
 DIP SOLDER TAIL  
**MOLEX INCORPORATED**  
 DOCUMENT NO. SD-67800-007  
 SHEET NO. 1 OF 2  
 THIS DRAWING CONTAINS INFORMATION THAT IS PROPRIETARY TO MOLEX INCORPORATED AND SHOULD NOT BE USED WITHOUT WRITTEN PERMISSION

F

E



NOTES:

- MATERIAL:  
HOUSING/COLOR: SEE CHART, GLASS FILLED, UL94V-0  
TERMINAL/PEG: BRASS
- TERMINAL PLATING:  
CONTACT AREA: (a) GOLD FLASH  
(b) GOLD, THICKNESS=0.76 MICRON MINIMUM  
(c) GOLD, THICKNESS=0.38 MICRON MINIMUM
- SOLDER TAIL: TIN PLATED 1.27 MICRON MINIMUM OVER NICKEL PLATED 1.27 MICRON MINIMUM
- PEG PLATING: TIN PLATED 1.27 MICRON MINIMUM OVER NICKEL PLATED 1.8 MICRON MINIMUM
- PACKAGING: TRAY
- PRODUCT SPECIFICATION REFER TO PS-67491-001
- RECOMMENDED SOLDERING PROCESS: THERMAL PLASTIC FOR WAVE SOLDEING PROCESS  
HIGH TEMPERATURE THERMAL PLASTIC FOR IR SOLDERING PROCESS



D

C

B

A

678007065	SEE NOTE2(c)							
678007062	SEE NOTE2(b)	3.25	3.45	2.40+/-0.05				
678007061	SEE NOTE2(a)							
678007055	SEE NOTE2(c)							
678007052	SEE NOTE2(b)	2.85	3.05	2.00+/-0.05	THERMAL	NATURE		
678007051	SEE NOTE2(a)				PLASTIC	COLOR		
678007045	SEE NOTE2(c)							
678007042	SEE NOTE2(b)	2.45	2.65	1.60+/-0.05				
678007041	SEE NOTE2(a)							
678007085	SEE NOTE2(c)							
678007082	SEE NOTE2(b)	3.25	3.45	2.40+/-0.05				
678007081	SEE NOTE2(a)							
678007075	SEE NOTE2(c)				THERMAL	PROCESS	PURE	
678007072	SEE NOTE2(b)	2.85	3.05	2.00+/-0.05	PLASTIC	BLUE C	TIN	
678007071	SEE NOTE2(a)					ΔE<3		
678007035	SEE NOTE2(c)							
678007032	SEE NOTE2(b)	2.45	2.65	1.60+/-0.05				
678007031	SEE NOTE2(a)							
678007025	SEE NOTE2(c)							
678007022	SEE NOTE2(b)	3.25	3.45	2.40+/-0.05				
678007021	SEE NOTE2(a)							
678007015	SEE NOTE2(c)							
678007012	SEE NOTE2(b)	2.85	3.05	2.00+/-0.05	THERMAL	BLACK		
678007011	SEE NOTE2(a)				PLASTIC			
678007005	SEE NOTE2(c)							
678007002	SEE NOTE2(b)	2.45	2.65	1.60+/-0.05				
678007001	SEE NOTE2(a)							
MATERIAL NUMBER	PLATING TYPE	DIM A	DIM B	P.C.B THICKNESS	PLASTIC TYPE	PLASTIC COLOR	REMARK	

678007125	SEE NOTE2(c)							
678007122	SEE NOTE2(b)	3.25	3.45	2.40+/-0.05				
678007121	SEE NOTE2(a)							
678007115	SEE NOTE2(c)				HIGH			
678007112	SEE NOTE2(b)	2.85	3.05	2.00+/-0.05	TEMPERATURE	BLACK	PURE	
678007111	SEE NOTE2(a)				THERMAL		TIN	
678007105	SEE NOTE2(c)				PLASTIC			
678007102	SEE NOTE2(b)	2.45	2.65	1.60+/-0.05				
678007101	SEE NOTE2(a)							
MATERIAL NUMBER	PLATING TYPE	DIM A	DIM B	P.C.B THICKNESS	PLASTIC TYPE	PLASTIC COLOR	REMARK	

OBSOLESCENCE PART  
EC NO: SH2006-0566  
DRAWN: BICHENZ6 2006/05/29  
CHKD: GRATE MA 2006/05/29  
APPR: JNCHEN 2006/05/30

QUALITY SYMBOLS  
▽=0  
▽C=0

GENERAL TOLERANCES (UNLESS SPECIFIED)  
mm INCH  
4 PLACES ± --- ± ---  
3 PLACES ± --- ± ---  
2 PLACES ± 0.15 ± ---  
1 PLACE ± 0.25 ± ---  
ANGULAR ± 1/2°

DIMENSION STYLE  
MM ONLY  
DRAWN BY DATE  
GRATE MA 2004/02/02  
CHECKED BY DATE  
YAJUN 2004/02/02  
APPROVED BY DATE  
SAM 2004/02/02

SCALE 5:1  
DESIGN UNITS METRIC  
THIRD ANGLE PROJECTION  
TITLE  
HIGH SPEED CONNECTOR  
1.27MM PITCH VERTICAL  
DIP SOLDER TAIL  
MOLEX INCORPORATED  
MATERIAL NO. SEE CHART  
DOCUMENT NO. SD-67800-007  
SHEET NO. 2 OF 2  
DRAFT WHERE APPLICABLE MUST REMAIN WITHIN DIMENSIONS  
THIS DRAWING CONTAINS INFORMATION THAT IS PROPRIETARY TO MOLEX INCORPORATED AND SHOULD NOT BE USED WITHOUT WRITTEN PERMISSION