

NOTES:

1. MATERIAL:  
 A. **BODY**; PHOSPHOR BRONZE PER QQ-B-750.  
 B. **SCREW**; STAINLESS STEEL PER QQ-S-763, 300 SERIES.  
 C. **CLAMP INSERT**; FLUOROSILICONE ELASTOMER PER MIL-R-25988.

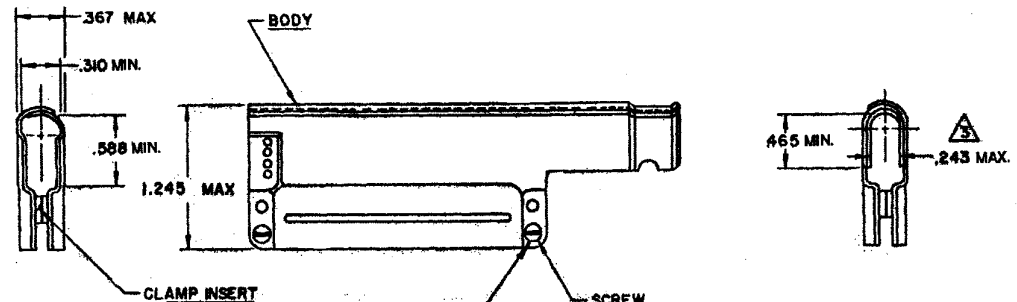
2. FINISH:  
 A. **BODY**; TIN PLATED PER MIL-T-10727 OVER NICKEL PER MIL-C-26074.  
 B. **SCREW**; CADMIUM PLATED PER QQ-P-416 OVER NICKEL UNDERPLATE

3. WHEN SCREWS ARE TIGHTENED TO ACHIEVE 0.1 INCH SPACING BETWEEN SHELL HALVES (EAR THICKNESS) THIS DIMENSION SHALL BE 0.225 MIN.

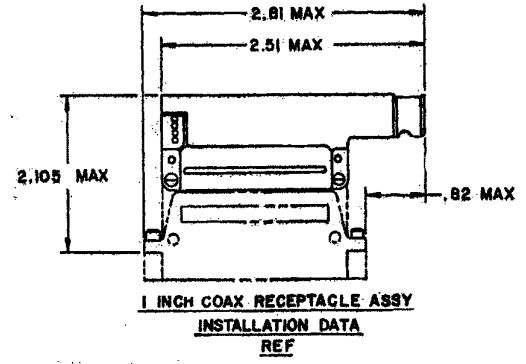
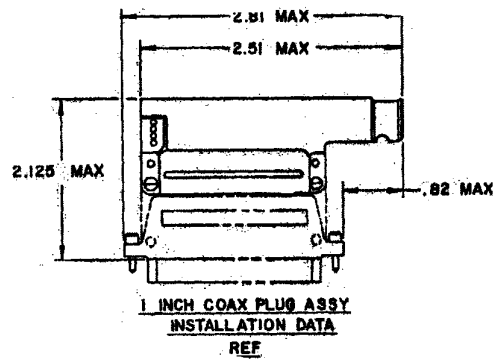
4. **Raychem** PART NUMBER CHA-0016-003 IS MARKED ON BACKSHELL PACKAGE.

5. THIS BACKSHELL IS FOR USE WITH **Raychem** MTC COAX CONNECTORS, 1" COAX PLUG OR 1" COAX RECEPTACLE AS SHOWN. FURTHERMORE IT IS FOR USE ON CADMIUM PLATED CONNECTORS WHERE 500 HOURS SALT SPRAY RESISTANCE IS REQUIRED.

REVISED		DESCRIPTION	DATE	APPROVED
CONF	LTR			
	B	REVISED PER ECN# T-020650	11/14/98	98
	C	REVISE PER DCR# T-28876	9/27/2001	MLHGGY



(OPTIONAL)  
 #1 CROSS RECESS  
 FOR USE WITH #1 DRIVER



**SPECIFICATION CONTROL DRAWING**

UNLESS OTHERWISE SPECIFIED DIMENSIONS ARE IN INCHES BRACKETED DIMENSIONS ( ) ARE METRIC AND TOLERANCES ARE:  .XXX: ± ( ) .XX: ± ( ) .X: ± ( )	DRAWN	LUTTICKEN	TYCO/ELECTRONICS/RAYCHEM WIRE AND HARNESSING PRODUCTS 307 CONSTITUTION DRIVE MENLO PARK, CALIFORNIA 94025	TITLE <b>RIGHT ANGLE BREAKOUT BACKSHELL ASSY (FOR CADMIUM PLATED CONNECTORS) 1 INCH MTC COAX</b>
	CHECKED	ST		
	APPROVED	[Signature] 2-19-98		
	APPROVED	[Signature] 2-20-98		
CAD FILE	T28876.TE	SIZE	CODE IDENT	DWG. NO
RPL	624323-000	C	NO. 68880	CHA-0016-003
DO NOT SCALE THIS DRAWING			WEIGHT	SHEET 1 OF 1

If this document is printed it becomes uncontrolled.  
 Check with the web for latest revision.