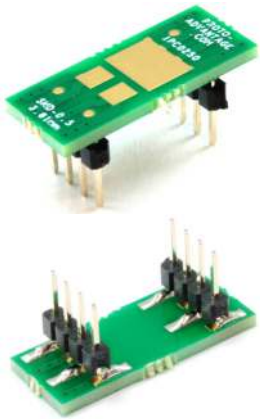


IPC0250 *Proto Advantage*

Datasheet revision 1.0

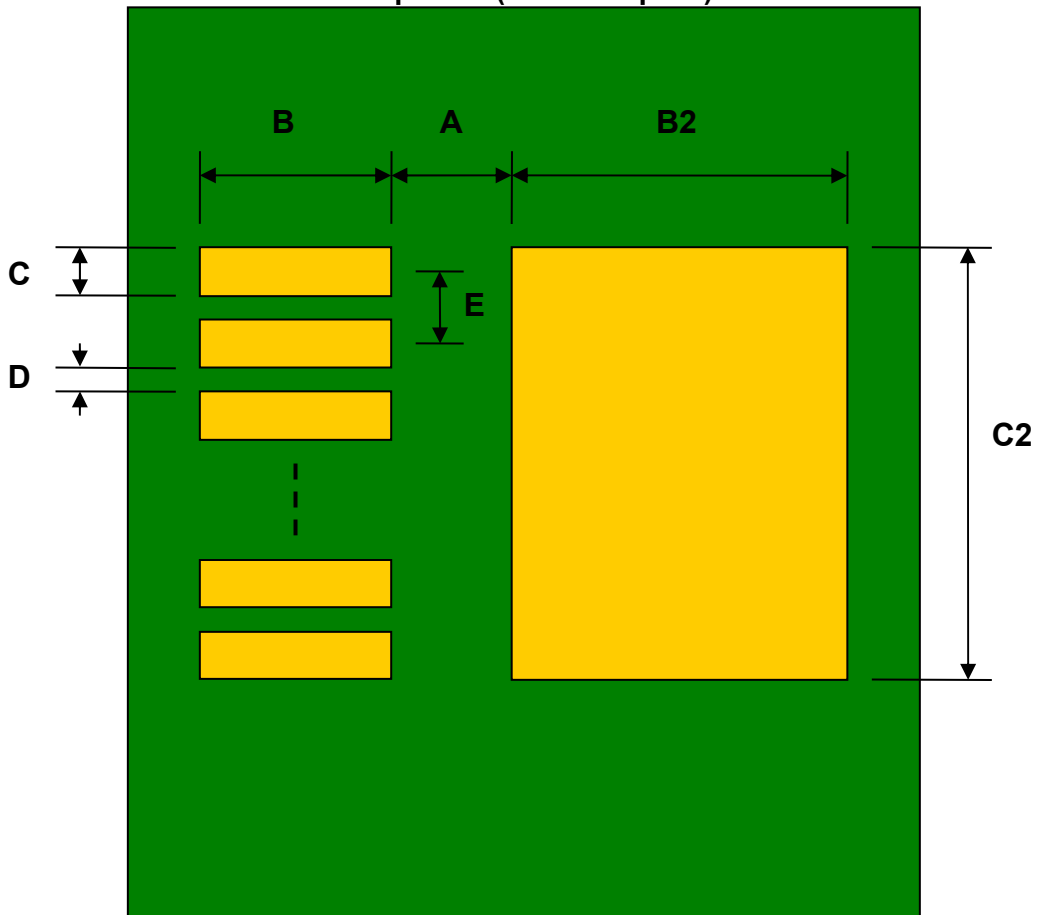
www.Proto-Advantage.com

SMD-0.5 to DIP-8 SMT Adapter (3.81 mm pitch, 10.28 x 7.64 mm body)



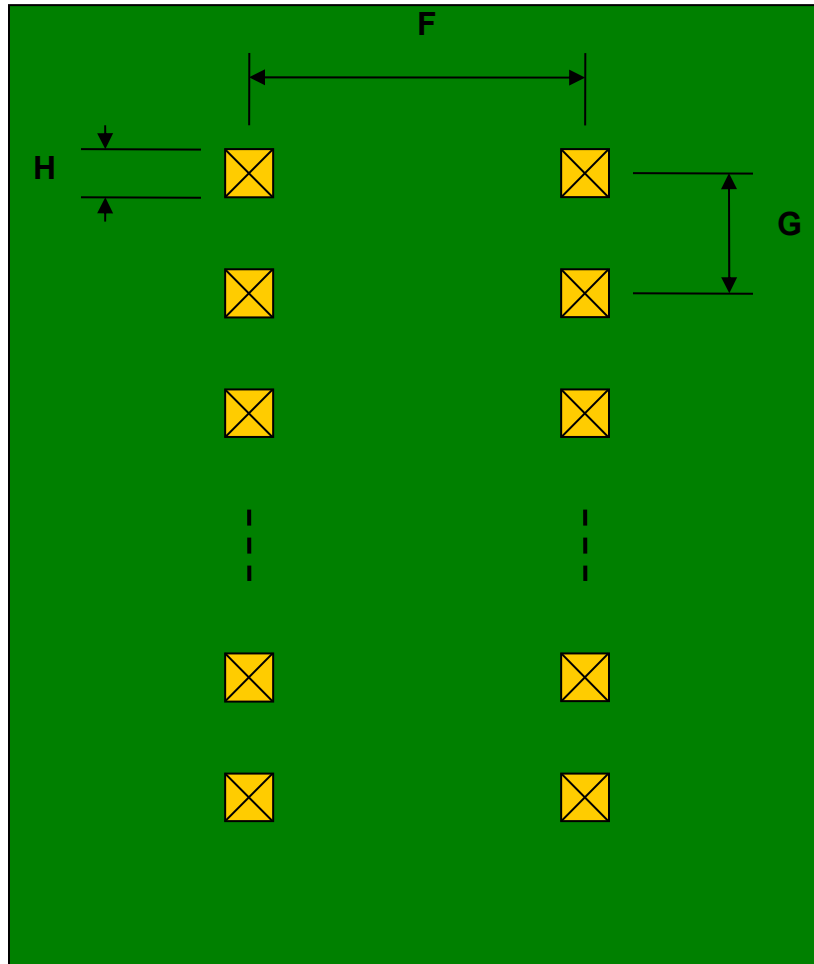
REF.	DIMENSIONS					
	mm			inches		
	MIN.	TYP.	MAX.	MIN.	TYP.	MAX.
A		1.015				
B		3.17				
C		2.54				
B2		5.84				
C2		7.39				
D		1.28				
E		3.82				
F					0.600	
G					0.100	
H					0.025	

Top View (SMT Footprint)



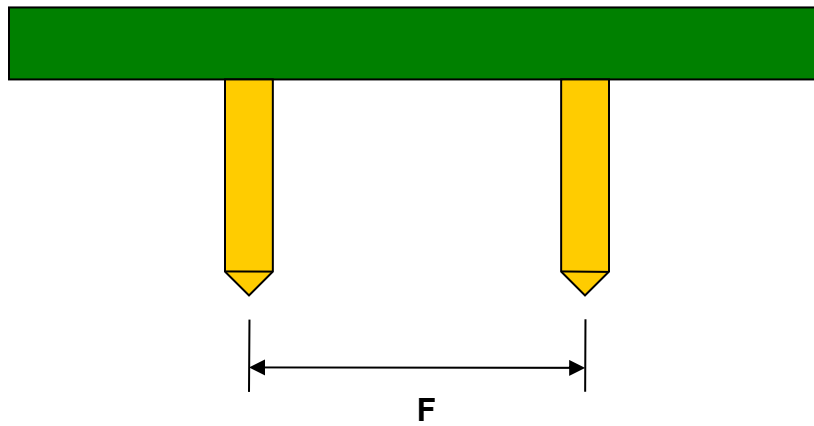
(Representative drawing only - not to scale)

Bottom View (DIP Pins)



(Representative drawing only - not to scale)

Side View (DIP Pins)



(Representative drawing only - not to scale)