

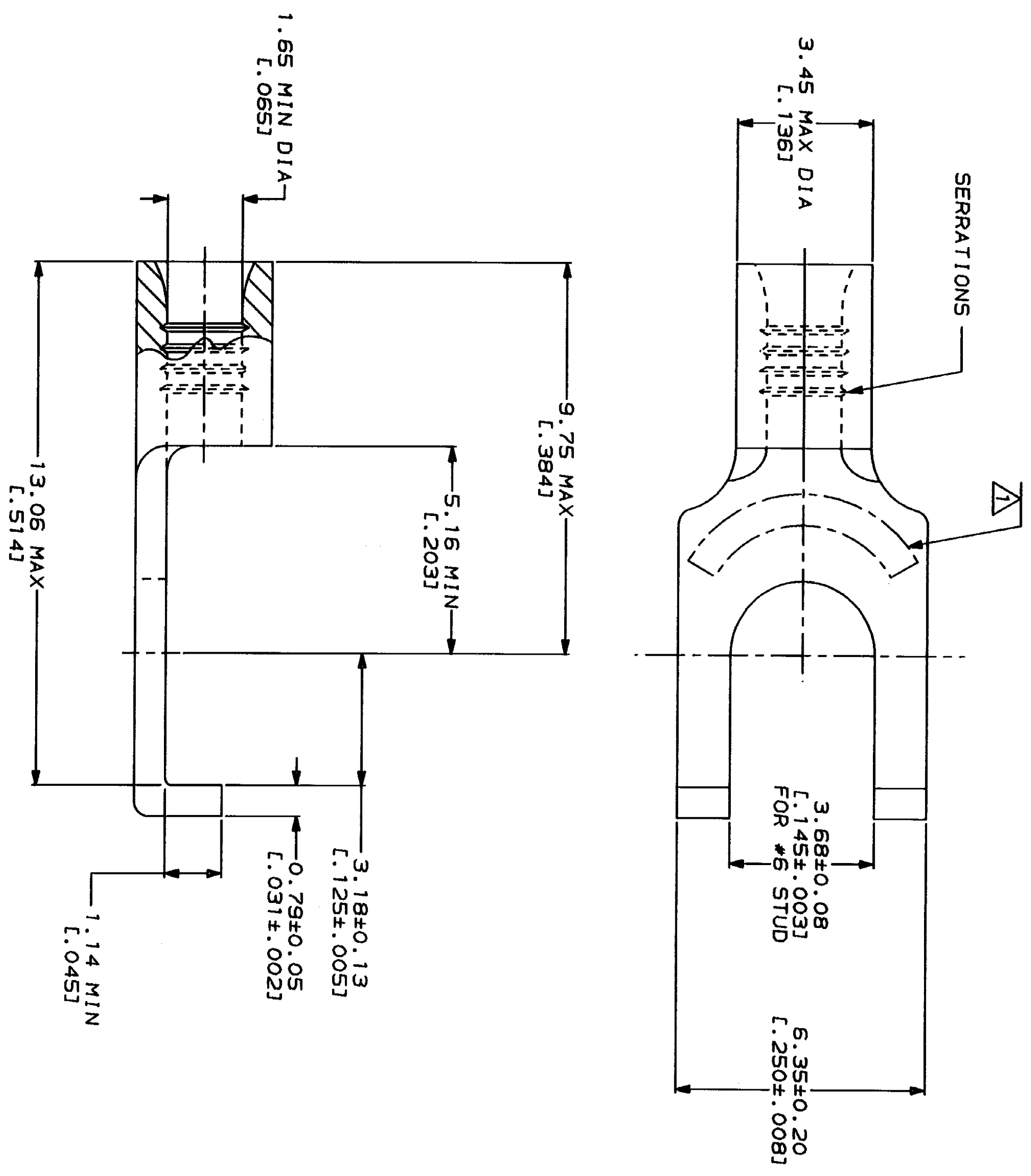
LOC	DIST	ZONE	LTR	DESCRIPTION	DATE	APPD
G	14	A		REVISED PER 0720-0230-93	2/28/94	DAP

**REVISIONS**

**METRIC**  
 DIMENSIONS LISTED IN MM [ INCHES ]

<b>AMP</b> WIRE RANGE	<b>UL</b> E13288 Listed
22-16 AWG STRANDED	22-16 AWG STRANDED
<b>LR7189</b> Certified	MILITARY P/N AND CLASS
NOT CERTIFIED	NOT APPLICABLE

STAMP AMP 22-18\* APPROX AS SHOWN  
 22-16 TERMINALS ARE STAMPED 22-18 IN  
 ACCORDANCE WITH MILITARY SPECIFICATION  
 MIL-T-7928, COMMERCIAL WIRE RANGE IS 22-16



**AMP INCORPORATED**  
**CUSTOMER SERVICE SYSTEMS**

FOR ADDITIONAL  
 PRODUCT INFORMATION OR  
 COPIES OF DRAWINGS  
 AND TECHNICAL DOCUMENTS  
 1-800-522-6752

FOR APPLICATION  
 TOOLING INFORMATION  
 1-800-722-1111

FOR ORDER ENTRY  
 1-800-526-5142

PRODUCT INFORMATION CENTER  
 TOOLING ASSISTANCE CENTER

MAX RECOMMENDED OPERATING  
 TEMPERATURE: 170°C MAX

VOLTAGE RATING:  
 NOT APPLICABLE

WIRE CROSS SECTIONAL AREA RANGE:  
 0.26-1.65mm<sup>2</sup> [509-3,260] CIR MILS  
 STRANDED

DO NOT SCALE PRINT.  
 UNLESS SPECIFIED  
 DIMENSIONS IN MILLIMETERS  
 TOLERANCES ON:  
 1. DIMENSIONS IN MILLIMETERS  
 2. PLC DEC # -  
 3. PLC DEC # -  
 ANGLES # -  
 MATERIAL  
 COPPER PER  
 ASTM B-152  
 ANNEALED

FINISH  
 TIN PLATE  
 0.00254L [0.00100] MIN  
 THK PER MIL-T-10727

DR 3-2-93 TA BRINKMAN	NAME	<b>AMP</b> AMP Incorporated Harrisburg, PA 17105-3508
CHK 3-2-93 DA PATTERSON	PRODUCT SPEC	TERMINAL, FLANGED SPADE, BUDGET
APPD 3-2-93 DE MILLER	APPLICATION SPEC	SIZE CAGE CODE DRAWING NO 00779 322776
APPD 3-2-93 JL NECKLEY	WEIGHT	SCALE 10:1 SHEET 1 OF 1