

KI series

LED indicators



DISTINCTIVE FEATURES

- Wide choice of bezel colors
- Wide choice of LEDs
- Laser etched symbols
- Long life expectancy



ENVIRONMENTAL SPECIFICATIONS

- Salt spray resistance : 96 hours according to IEC 512-6, test 11f
- Operating temperature : -40 °C to +85 °C (-40 °F to +185 °F)



ELECTRICAL AND GENERAL SPECIFICATIONS

- Operating voltage : 6 VDC, 12 VDC or 24 VDC
- Nominal current : 20 mA per LED
- Panel thickness : 0.8 mm to 4.6 mm
- Recommended panel thickness : between 2 mm and 3.5 mm

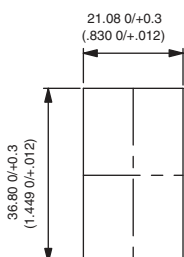


MATERIALS

- Case : ABS
- Bezel : ABS
- Terminals : brass, silver plated



PANEL CUT-OUT



The company reserves the right to change specifications without notice.

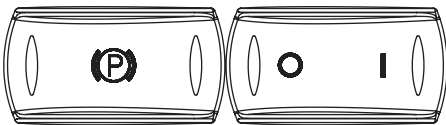
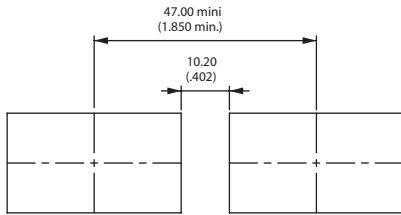
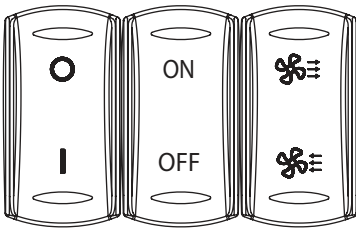
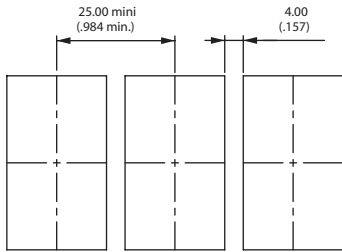


KI series

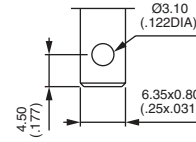
LED indicators



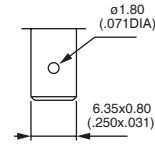
MATRIX MOUNTING



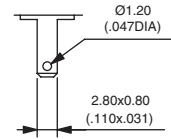
TERMINALS



Solder lug / quick-connect



Normalized quick-connect 6.35x0.8

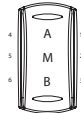


Normalized quick-connect 2.8x0.8



BUILD YOUR PART NUMBER

CASE + LEDS

KI		Side A	Center M	Side B			Area A	Area M	Area B									
SERIES		LEDS					SYMBOLS											
	COLORS	X			TYPE OF ILLUMINATION													
1	Blue	A	None		X	Standard												
1/4	Dark blue	B	LED 6 V red		S	Super bright												
2	Black	C	LED 6 V green															
3	Green	M	LED 6 V yellow															
4	Grey	R	LED 6 V blue															
5	Yellow	D	LED 6 V white															
6	Red	E	LED 12 V red															
9	Orange	F	LED 12 V green															
		N	LED 12 V yellow															
		S	LED 12 V blue															
		J	LED 12 V white															
		K	LED 24 V red															
		L	LED 24 V green															
		P	LED 24 V yellow															
		T	LED 24 V blue															
			LED 24 V white															
			Etc.															
			<u>DC voltage standard</u>															
						MARKING ORIENTATION												
						<table border="0" style="width: 100%;"> <tr><td style="text-align: center;">N</td><td>North</td></tr> <tr><td style="text-align: center;">O</td><td>West</td></tr> <tr><td style="text-align: center;">S</td><td>South</td></tr> <tr><td style="text-align: center;">E</td><td>East</td></tr> </table>			N	North	O	West	S	South	E	East		
N	North																	
O	West																	
S	South																	
E	East																	
						DRAWINGS ON THE FOLLOWING PAGES.												
						TERMINALS WITH BARRIER												
						<table border="0" style="width: 100%;"> <tr><td style="text-align: center;">C</td><td>Solder lug / quick-connect</td></tr> <tr><td style="text-align: center;">F</td><td>Quick-connect 6.35 mm</td></tr> <tr><td style="text-align: center;">J</td><td>Quick-connect 2.8 mm</td></tr> </table>			C	Solder lug / quick-connect	F	Quick-connect 6.35 mm	J	Quick-connect 2.8 mm				
C	Solder lug / quick-connect																	
F	Quick-connect 6.35 mm																	
J	Quick-connect 2.8 mm																	

On request : 48 VDC voltage - AC voltage - new design.
Symbols & Accessories : see end of the series.



ABOUT THIS SERIES

- Notice :** please note that not all combinations of above numbers are available. Refer to the following pages for further information.
- Mounting accessory :** Standard hardware supplied : one flat seal.

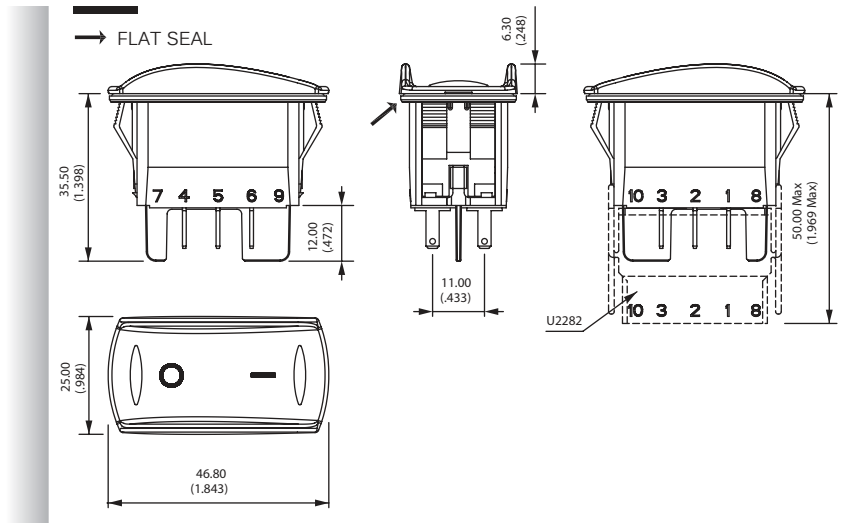
KI series

LED indicators

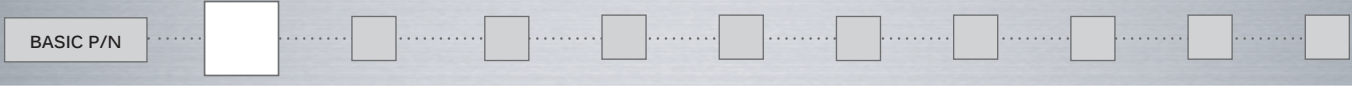
DIMENSIONS



KI

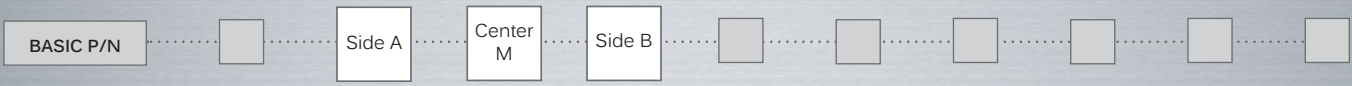


BEZEL COLOR



- 1 Blue
- 1/4 Dark blue
- 2 Black
- 3 Green
- 4 Grey
- 5 Yellow
- 6 Red
- 9 Orange

LEDS



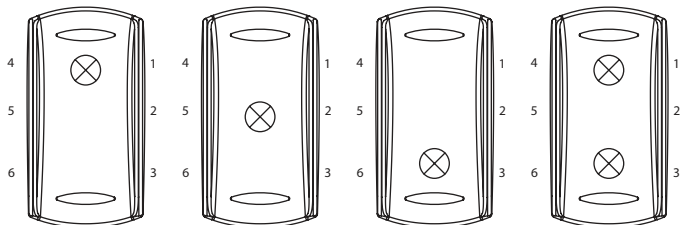
Complete each enlarged box with one of the codes listed below.

X Without LED

	Red	Green	Yellow	Blue	White	Amber	Red/green
6 VDC	A	B	C	M	R	4	1
12 VDC	D	E	F	N	S	5	2
24 VDC	J	K	L	P	T	6	3
No resistor	U	V	W	Y	Z	9	8

LED consumption : 20 mA
 @ nominal voltage (25 °C / 77 °F)
 Other illumination solutions : on request.

Side A



Side B

TYPE OF ILLUMINATION

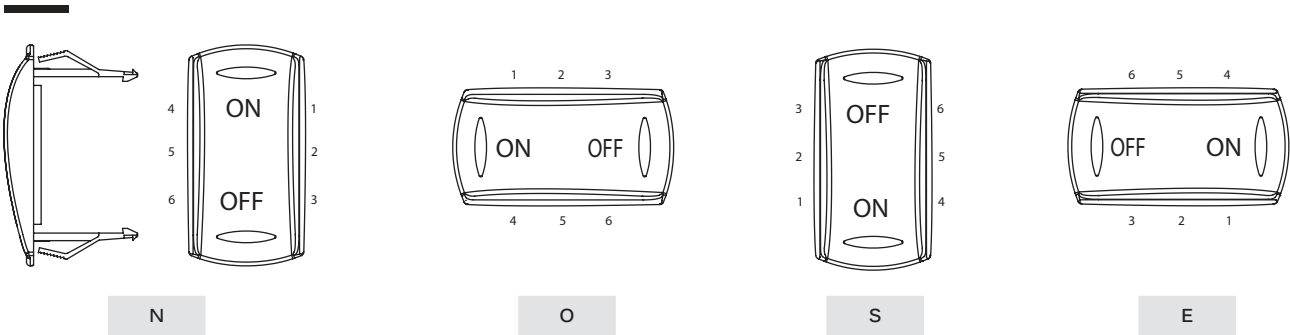


- X Standard
- S Super bright

MARKING ORIENTATION



If no marking required, leave box blank.
Other orientations : on request



SYMBOLS



XX No symbol

Available symbols

Complete each enlarged box with the one of the codes listed on the following pages.

Marking color

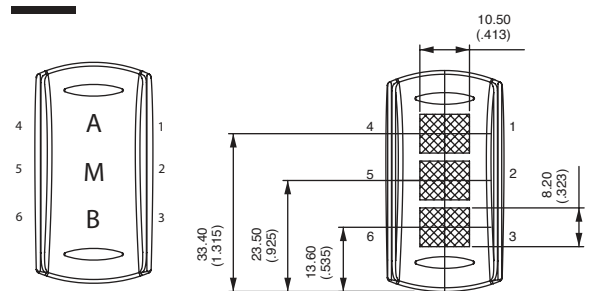
White (laser etching)

Laser etching resistance

- Water and petrol resistant according to EN61058-1
- Tear resistant (cross-cut test) according to NF ISO 2409 : class 0
- UV resistant according to ISO 4892-2

Marking area

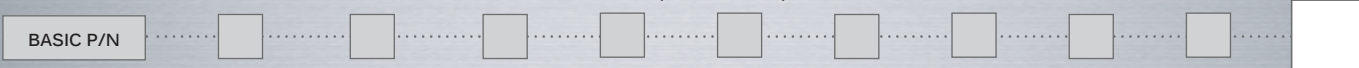
The symbol will be included in the hatched area.



KI series

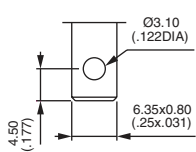
LED indicators

TERMINALS
(WITH BARRIER)

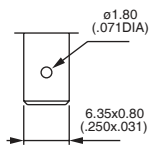


- C Solder lug / quick-connect : 10 terminals for use with connector U2292
- F Normalized quick-connect 6.35x0.8 : 10 terminals for use with connector U2292
- J Normalized quick-connect 2.8x0.8 : 10 terminals for use with connector U2292

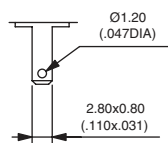
Terminals are marked on the case.



C



F



J

