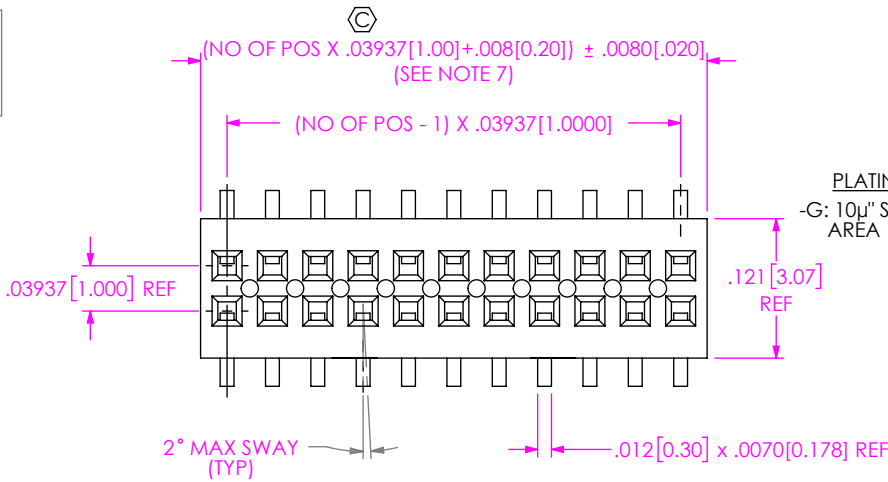


DO NOT SCALE FROM THIS PRINT

MLE-1XX-XX-X-DV-X-X-XX



**No OF POSITIONS**  
-02 THRU -75 (PER ROW)

**LEAD STYLE**  
-01: SURFACE MOUNT (USE C-99-01-X)

**PLATING SPECIFICATION**  
-G: 10μ" SELECTIVE GOLD IN CONTACT AREA

**BODY SPECIFICATION**  
-DV: DOUBLE VERTICAL (USE MLE-XX-D)

**PACKAGING**  
BLANK: TUBES (SEE SHT 2)  
-TR: TAPE & REEL (SEE NOTES 9 & 10)  
-FR: FULL REEL QTY TAPE & REEL (SEE NOTES 9 & 10)

**PICK & PLACE OPTION**  
-P: PICK & PLACE PAD (SEE FIG 4, SHT 2) (USE LMP-01)  
POSITIONS -05, AND -06 MUST BE PACKAGED IN T&R (AVAILABLE ON POSITIONS -05 THRU -75 ONLY)  
-K: POLYIMIDE FILM PAD (SEE FIG 5, SHT 2) (-05 POSITIONS MIN) (USE K-DOT-.157-.250-.005)

**OPTIONS**  
-A: ALIGNMENT PIN (SEE FIG 2 & 3, SHT 2) (USE MLE-XX-D-XX) (MOLDED TO POSITION OR STAKED) (SAMTEC DISCRETION WHICH -A PIN IS USED) (MOLDED 3 POSITION MIN. SEE FIG 2, SHT 2) (STAKED 7 POSITION MIN. SEE FIG 3, SHT 2)

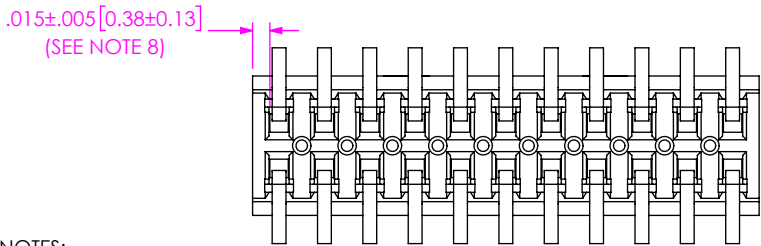
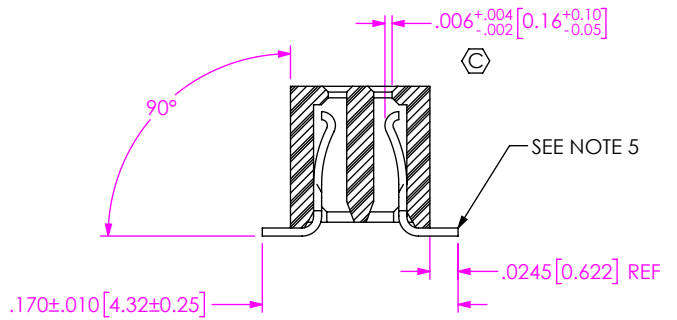
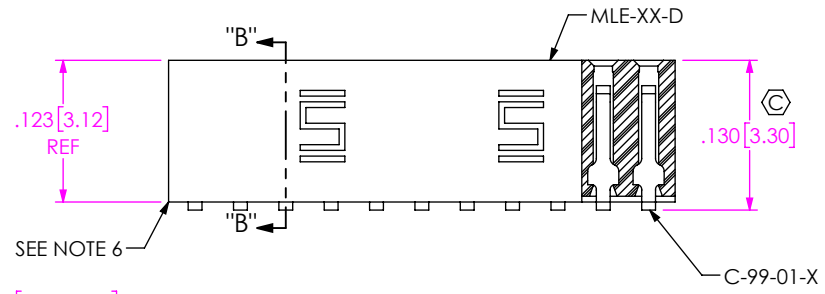

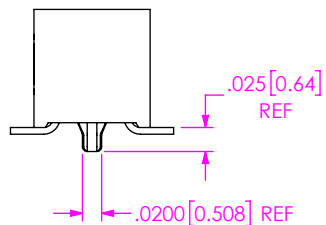
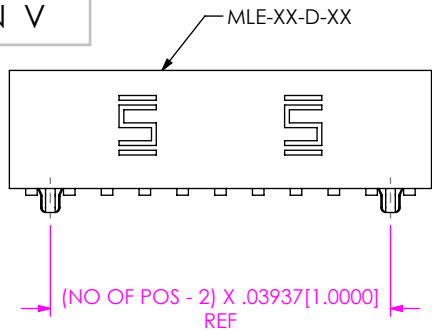


FIG 1  
MLE-1XX-01-X-DV SHOWN

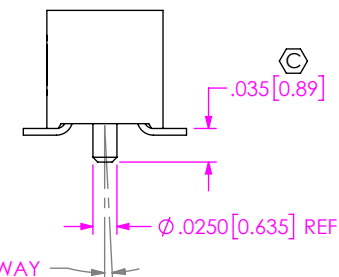
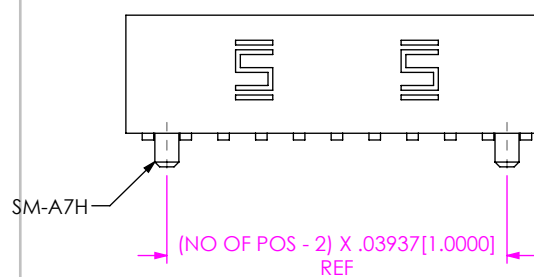
NOTES:

1. Ⓢ REPRESENTS A CRITICAL DIMENSION.
2. COPLANARITY: POS -02 THRU -26: .004[0.10]  
POS -27 THRU -75: .006[0.15]
3. MINIMUM PUSHOUT FORCE: .5 LB.
4. POSITIONS -05, -06 WITH PICK AND PLACE PADS -P TO BE PACKAGED IN T&R, POSITIONS -05, -06 WITHOUT PICK AND PLACE PADS -P AND POSITIONS -07 THRU -75 WITH OR WITHOUT PICK AND PLACE PADS -P TO BE PACKAGED IN TUBES, POSITIONS -02 THRU -04 TO BE LAYER PACKAGED.
5. BURR ALLOWANCE: .003[0.08] MAX.
6. .010[.25] MAX CUT FLASH NOT TO PROTRUDE BELOW LEADS.
7. WILL LOSE TWO POSITIONS FOR EVERY CUT MADE. MAXIMUM CUT FLASH TO BE .010[0.25] WITH NO FLASH IN HOLES OR EXTENDING BELOW LEADS.
8. ENDWALL THICKNESS TO BE SYMMETRICAL WITHIN .005[0.13].
9. ORDERS WILL BE PACKAGED ACCORDING TO THE SAMTEC PACKAGING EFFICIENCY STANDARDS (SPES) FOUND ON WWW.SAMTEC.COM.
10. ATTACH LABEL -4X2 TO EACH REEL.

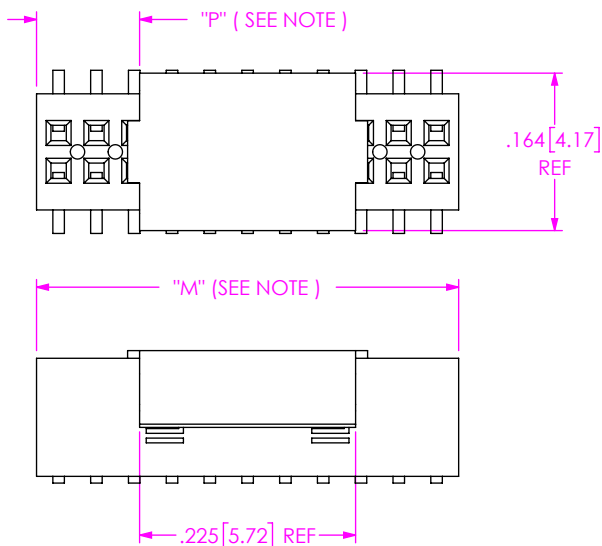
UNLESS OTHERWISE SPECIFIED, DIMENSIONS ARE IN INCHES. TOLERANCES ARE: DECIMALS      ANGLES .XX: ±.01 [0.3]      2° .XXX: ±.005 [0.13] .XXXX: ±.0020 [0.051]	* PROPRIETARY NOTE * THIS DOCUMENT CONTAINS CONFIDENTIAL AND PROPRIETARY INFORMATION AND ALL DESIGN, MANUFACTURING, REPRODUCTION, USE, PATENT RIGHTS AND SALES RIGHTS ARE EXPRESSLY RESERVED BY SAMTEC, INC. THIS DOCUMENT SHALL NOT BE DISCLOSED, IN WHOLE OR PART, TO ANY UNAUTHORIZED PERSON OR ENTITY NOR REPRODUCED, TRANSFERRED OR INCORPORATED IN ANY OTHER PROJECT IN ANY MANNER WITHOUT THE EXPRESS WRITTEN CONSENT OF SAMTEC, INC.	 520 PARK EAST BLVD., NEW ALBANY, IN 47150 PHONE: 812-944-6733      FAX: 812-948-5047 e-Mail: info@SAMTEC.com      code 55322	
		MATERIAL: DO NOT SCALE DRAWING      SHEET SCALE: 6:1 INSULATOR: VECTRA E130i, COLOR: BLACK CONTACT: BeCu	DESCRIPTION: 1 MM DUAL ROW STRIP ASSEMBLY DWG. NO. <b>MLE-1XX-XX-X-DV-X-X-XX</b> BY: D PURVIS      01/07/1997      SHEET 1 OF 3



**FIG 2**  
MLE-1XX-01-X-DV-A SHOWN  
MOLDED ALIGNMENT PIN (3 POS MIN)  
(DIFFERENT AS SHOWN, OTHERWISE SAME AS FIG 1)

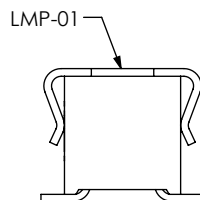


**FIG 3**  
MLE-1XX-01-X-DV-A SHOWN  
STAKED ALIGNMENT PIN (7 POS MIN)  
(DIFFERENT AS SHOWN, OTHERWISE SAME AS FIG 1)



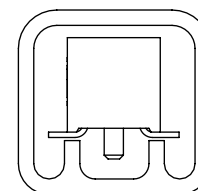
**FIG 4**  
MLE-1XX-01-X-DV-P SHOWN  
(DIFFERENT AS SHOWN, OTHERWISE SAME AS FIG 1)

NOTE: "M" = USED MEASURED DIMENSION (REF)  
"P" =  $(("M" - .225[5.71]) / 2) \pm .020[0.51]$

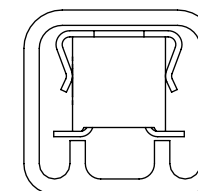


**PACKAGING VIEW**  
SEE NOTE 4

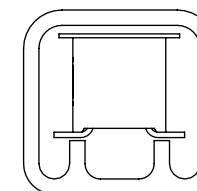
OPTION	TUBE	PLUG
NO OPTION, -A -K, -K-A -P, -P-A	PT-1-24-01-62	TP-12



PT-1-24-01-62

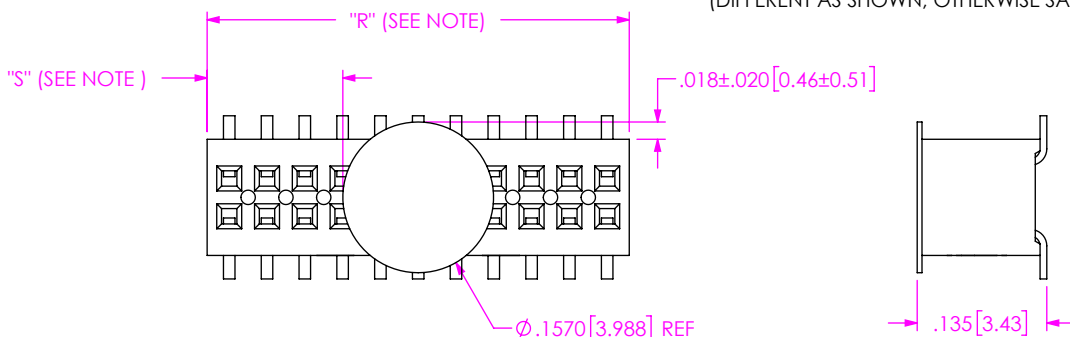


PT-1-24-01-62



PT-1-24-01-62

**FIG 5**  
MLE-1XX-01-X-DV-K SHOWN  
(DIFFERENT AS SHOWN, OTHERWISE SAME AS FIG 1)



NOTE: "R" = USED MEASURED DIMENSION (REF)  
"S" =  $(("R" - .1570[3.988]) / 2) \pm .020[0.51]$

F:\DWG\MISC\MKTG\MLE-1XX-XX-X-DV-X-X-XX-MKT.SLDDRW

**PROPRIETARY NOTE**

THIS DOCUMENT CONTAINS CONFIDENTIAL AND PROPRIETARY INFORMATION AND ALL DESIGN, MANUFACTURING, REPRODUCTION, USE, PATENT RIGHTS AND SALES RIGHTS ARE EXPRESSLY RESERVED BY SAMTEC, INC. THIS DOCUMENT SHALL NOT BE DISCLOSED, IN WHOLE OR PART, TO ANY UNAUTHORIZED PERSON OR ENTITY NOR REPRODUCED, TRANSFERRED OR INCORPORATED IN ANY OTHER PROJECT IN ANY MANNER WITHOUT THE EXPRESS WRITTEN CONSENT OF SAMTEC, INC.



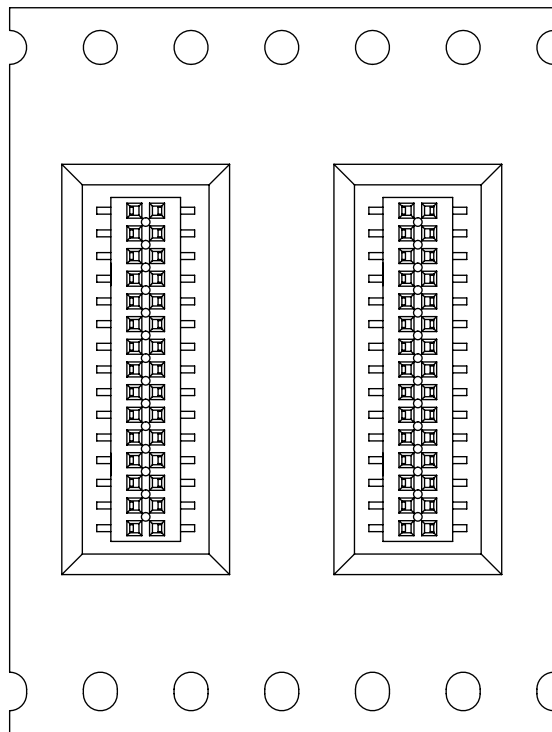
520 PARK EAST BLVD, NEW ALBANY, IN 47150  
PHONE: 812-944-6733 FAX: 812-948-5047  
e-Mail: info@SAMTEC.com code 53322

SHEET SCALE: 5:1

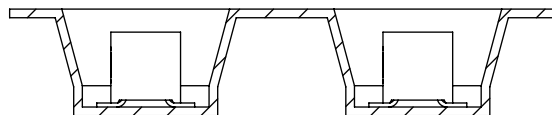
DESCRIPTION:  
1 MM DUAL ROW STRIP ASSEMBLY

DWG. NO.  
**MLE-1XX-XX-X-DV-X-X-XX**

BY: D PURVIS 01/07/1997 SHEET 2 OF 3



USER DIRECTION OF UN-REELING →  
POCKET NOT DETAILED



TAPE & REEL

F:\DWG\MISC\MKTG\MLE-1XX-XX-X-DV-X-X-XX-MKT.SLDDRW

<p><b>PROPRIETARY NOTE</b></p> <p>THIS DOCUMENT CONTAINS CONFIDENTIAL AND PROPRIETARY INFORMATION AND ALL DESIGN, MANUFACTURING, REPRODUCTION, USE, PATENT RIGHTS AND SALES RIGHTS ARE EXPRESSLY RESERVED BY SAMTEC, INC. THIS DOCUMENT SHALL NOT BE DISCLOSED, IN WHOLE OR PART, TO ANY UNAUTHORIZED PERSON OR ENTITY NOR REPRODUCED, TRANSFERRED OR INCORPORATED IN ANY OTHER PROJECT IN ANY MANNER WITHOUT THE EXPRESS WRITTEN CONSENT OF SAMTEC, INC.</p>	 <p>520 PARK EAST BLVD, NEW ALBANY, IN 47150 PHONE: 812-944-6733 FAX: 812-948-5047 e-Mail info@SAMTEC.com code 55322</p>
<p>SHEET SCALE: 3:1</p>	<p>DESCRIPTION: 1 MM DUAL ROW STRIP ASSEMBLY</p>
	<p>DWG. NO. <b>MLE-1XX-XX-X-DV-X-X-XX</b></p> <p>BY: D PURVIS 01/07/1997 SHEET 3 OF 3</p>