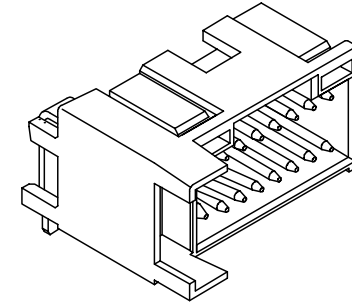
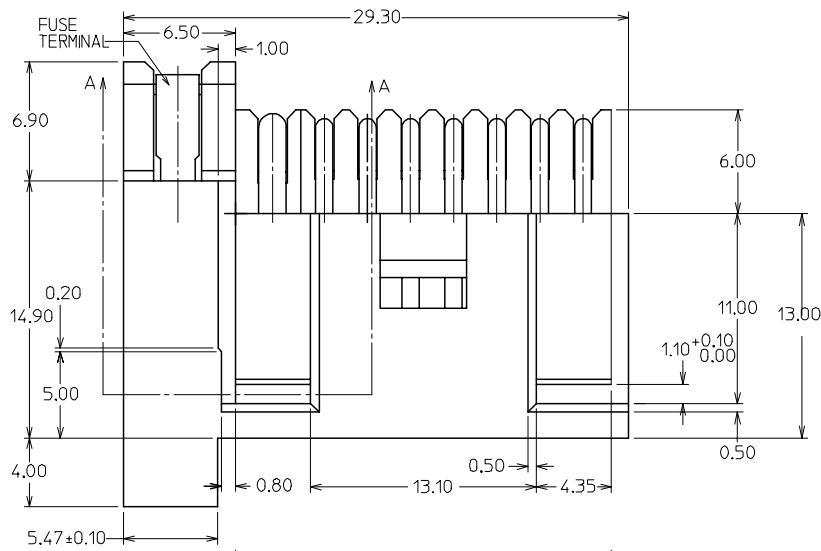
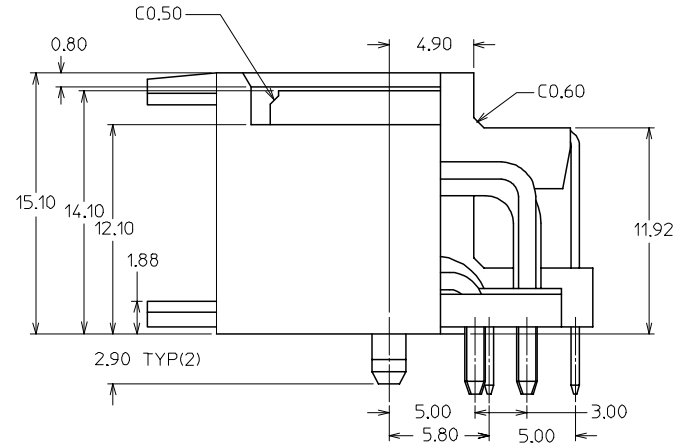
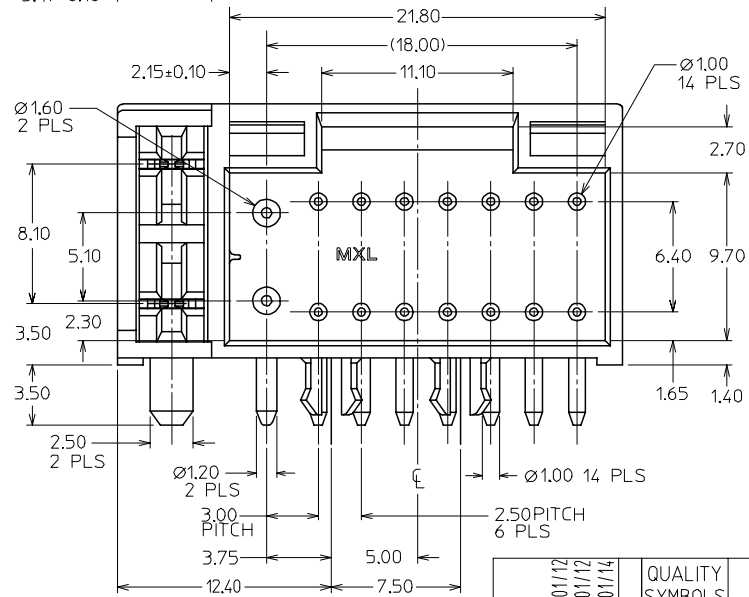


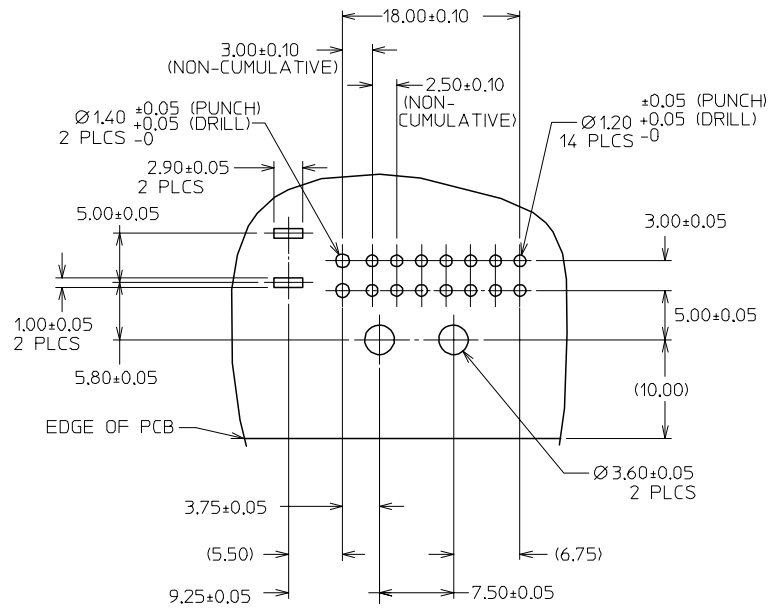
PART NO	LEAD FREE	SIGNAL PIN QTY	POWER PIN QTY	FUSE TERMINAL QTY
87527-1611	NO $\frac{\Delta}{2}$	14	2	2
87527-1612	YES $\frac{\Delta}{2}$	14	2	2



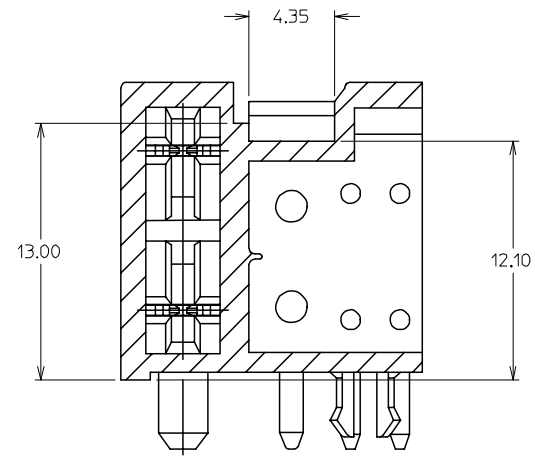
ISOMETRIC VIEW OF CONNECTOR



REV	DESCRIPTION	QUALITY SYMBOLS	GENERAL TOLERANCES (UNLESS SPECIFIED)		DIMENSION STYLE		SCALE	DESIGN UNITS	THIRD ANGLE PROJECTION	
			mm	INCH	MM ONLY	DATE			NTS	METRIC
B1	REVISE NOTE 2. EC NO: S2005-0376 DRAWN:ATSEE CHKD:SHONG APPR:SKTOH	$\nabla=0$ $\sphericalangle=0$	4 PLACES ± --- 3 PLACES ± --- 2 PLACES ± 0.2 1 PLACE ± ---	± --- ± --- ± --- ± ---	DRAWN BY GMS IMMEL CHECKED BY SKTOH APPROVED BY PTHO MATERIAL NO. SEE TABLE	DATE 1997/02/13 DATE 1997/05/08 DATE 1997/05/09	TITLE SALES DRAWING 2.5/3.0 W-T-B HEADER WITH SINGLE FUSE SOCKET MOLEX INCORPORATED	DOCUMENT NO. SD-87527-007	SHEET NO. 1 OF 2	DRAFT WHERE APPLICABLE MUST REMAIN WITHIN DIMENSIONS



PCB LAYOUT : COMPONENT SIDE  
RECOMMENDED PCB THICKNESS = 1.20-1.60



SECTION A-A

NOTES:-

- MATERIALS:  
HOUSING: - NYLON, UL94-V2  
COLOR: BLACK  
SIGNAL PINS - BRASS, 1.00 DIA.  
POWER PINS - BRASS, 1.60/ 1.20 DIA.  
FUSE TERMINALS - BRASS, 0.5mm THK.

△ FINISH:

- TIN/ LEAD OVER NICKEL UNDERPLATE OVERALL.
- TIN OVER NICKEL UNDERPLATE OVERALL.

- PRODUCT SPECIFICATION: PS-87527-0001.

<b>REVISE NOTE 2.</b> EC NO: S2005-0376 DRAWN: ATSEE 2005/01/12 CHKD: SHONG 2005/01/12 APPR: SKTOH 2005/01/14	QUALITY SYMBOLS ▽=0 ▽=0	GENERAL TOLERANCES (UNLESS SPECIFIED)		DIMENSION STYLE <b>MM ONLY</b>	SCALE NTS	DESIGN UNITS METRIC	THIRD ANGLE PROJECTION			
		4 PLACES ± --- ± ---	3 PLACES ± --- ± ---	2 PLACES ± 0.2 ± ---	1 PLACE ± --- ± ---	DRAWN BY GMS IMMEL	DATE 1997/02/13	SALES DRAWING 2.5/3.0 W-T-B HEADER WITH SINGLE FUSE SOCKET MOLEX INCORPORATED		
		ANGULAR ± 3 °				CHECKED BY SKTOH	DATE 1997/05/08			
		DRAFT WHERE APPLICABLE MUST REMAIN WITHIN DIMENSIONS				APPROVED BY PTHO	DATE 1997/05/09	DOCUMENT NO. SD-87527-007	SHEET NO. 2 OF 2	