

# I.281 | Cylindrical revolving handles

Duroplast



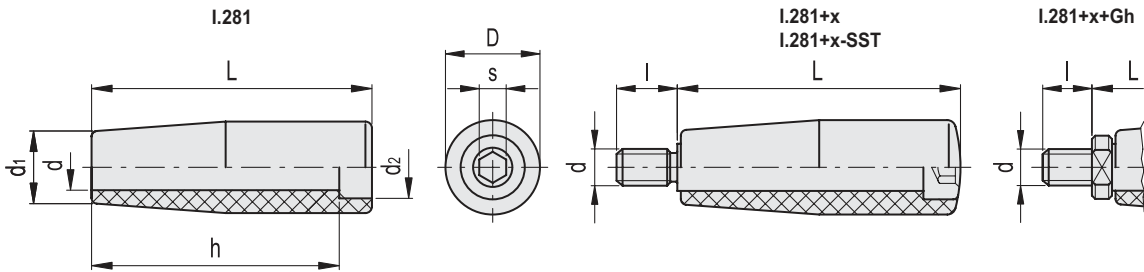
## MATERIAL

Phenolic based (PF) Duroplast, black colour, glossy finish.

## STANDARD EXECUTIONS

- **I.281**: plain pass-through hole.
- **I.281+x**: matte chrome-plated steel pin, cylindrical-head with hexagon socket.
- **I.281+x-SST**: AISI 304 stainless steel pin, cylindrical-head with hexagon socket.
- **I.281+x+Gh**: matte chrome-plated steel pin and locking nut, cylindrical-head with hexagon socket.

Conversion Table			
1 mm = 0.039 inch			
L			
mm	inch	mm	inch
39	1.53	79	3.11
40	1.57	80	3.15
45	1.77	86	3.39
50	1.97	89	3.50
55	2.16	90	3.54
64	2.52	96	3.78
65	2.56	100	3.94
70	2.76	102	4.02
71	2.79	109	4.29

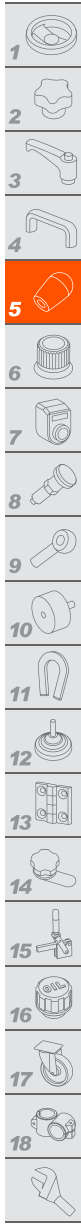


I.281								
Code	Description	D	L	d	d1	d2	h	⚖️
22301	I.281/40	18	39	8	15	12	35	10
22401	I.281/50	21	49	10	17	14	43	16
22501	I.281/65	23	64	12	19	16	56	22
22601	I.281/80	26	79	13	21	17	70	37
22701	I.281/90	28	89	14	22	19	79	49
22801	I.281/100	31	100	16	25	20	89	66

I.281+x								
Code	Description	D	L	d6g	d1	l	s	⚖️
22311	I.281/40+x-M6	18	40	M6	15	13	4	28
22411	I.281/50+x-M8	21	50	M8	17	15	5	52
22511	I.281/65+x-M8	23	65	M8	19	17	6	86
22512	I.281/65+x-M10	23	65	M10	19	17	6	90
22611	I.281/80+x-M10	26	80	M10	21	18	6	132
22711	I.281/90+x-M10	28	90	M10	22	18	8	170
22811	I.281/100+x-M12	31	102	M12	25	20	8	245
22812	I.281/100+x-M14	31	102	M14	25	20	8	248

I.281+x-SST								
Code	Description	D	L	d6g	d1	l	s	⚖️
22312	I.281/40+x-M6-SST	18	40	M6	15	13	4	28
22412	I.281/50+x-M8-SST	21	50	M8	17	15	5	52
22513	I.281/65+x-M8-SST	23	65	M8	19	17	6	87
22514	I.281/65+x-M10-SST	23	65	M10	19	17	6	91
22612	I.281/80+x-M10-SST	26	80	M10	21	18	6	133
22712	I.281/90+x-M10-SST	28	90	M10	22	18	8	172
22813	I.281/100+x-M12-SST	31	102	M12	25	20	8	247
22814	I.281/100+x-M14-SST	31	102	M14	25	20	8	250

I.281+x+Gh								
Code	Description	D	L	d6g	d1	l	s	⚖️
22321	I.281/40+x-M6+Gh	18	45	M6	15	8	4	33
22421	I.281/50+x-M8+Gh	21	55	M8	17	10	5	56
22521	I.281/65+x-M8+Gh	23	70	M8	19	12	6	90
22522	I.281/65+x-M10+Gh	23	71	M10	19	12	6	98
22621	I.281/80+x-M10+Gh	26	86	M10	21	12	6	143
22721	I.281/90+x-M10+Gh	28	96	M10	22	12	8	180
22821	I.281/100+x-M12+Gh	31	109	M12	25	13	8	256
22822	I.281/100+x-M14+Gh	31	109	M14	25	13	8	262



Fixed & Revolving handles