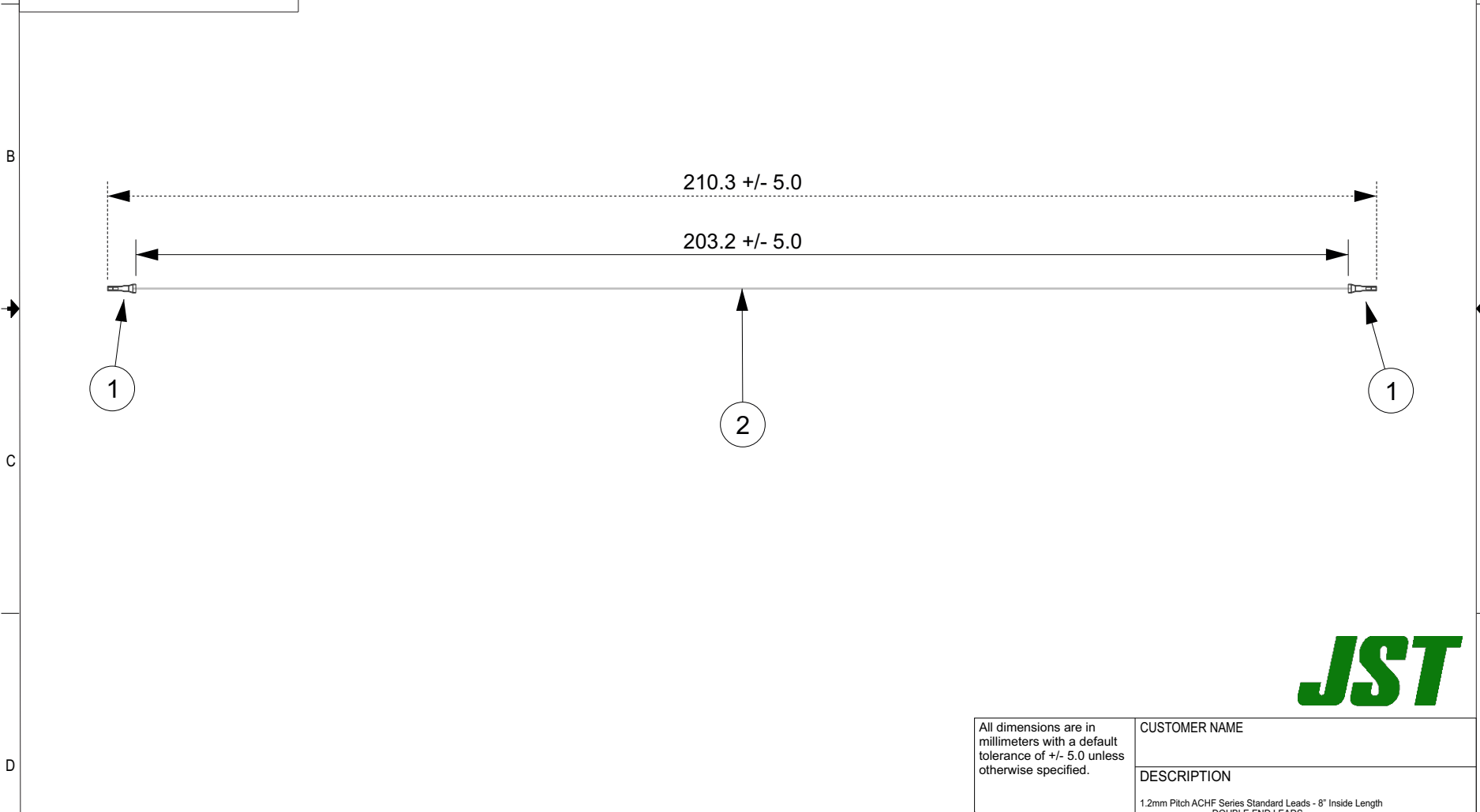


THIS DRAWING CONTAINS INFORMATION THAT IS PROPRIETARY TO J.S.T. AND SHALL NOT BE USED OR SHOWN WITHOUT WRITTEN PERMISSION.

| Item No. | Part No. | Description | APPLICABLE HOUSINGS | |
|---|--------------------------|------------------------|---------------------|------------------|
| 1 | SACHF-003GAC-P0.2 | ACHF Connector Contact | NO. OF CIRCUITS | HOUSING PART NO. |
| 2 | UL1571 (spec OD), 28 AWG | White | 3 | ACHFR-03V-H |
| Electrical Specifications Current: 3 circuits - 2.5AAC/DC 4,6 circuits - 1.0AAC/DC Voltage: 50V AC/DC | | | 4 | ACHFR-04V-H |
| | | | 6 | ACHFR-06V-H |



| | | | | | |
|---|----------------------------------|--|-------------------|----------|-------------------|
| All dimensions are in millimeters with a default tolerance of +/- 5.0 unless otherwise specified. | | CUSTOMER NAME | | | |
| | | DESCRIPTION 1.2mm Pitch ACHF Series Standard Leads - 8" Inside Length DOUBLE END LEADS | | | |
| Drawn By: Larissa Mosley | Checked By: Steven Pilkington | SIZE | CUSTOMER PART NO. | PART NO. | REV |
| SCALE 1:1 | | DRAWING NO. GAM-317 | ASACHFSACHF28W203 | | DATE 4/24/2018 |

| ZONE | REV | DESCRIPTION | DATE | APPROVED |
|------|-----|-------------------------------|-----------|----------|
| 1 | 1 | Add Electrical Specifications | 6/29/2018 | LM |

1 2 3 4 5 6 7 8