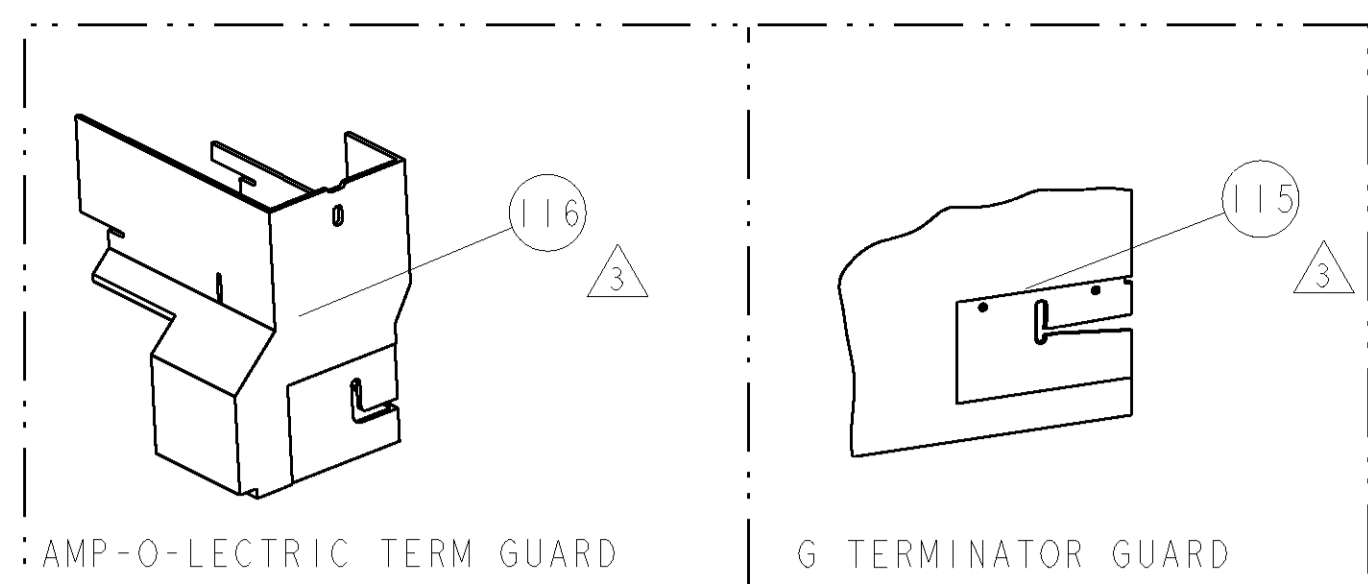


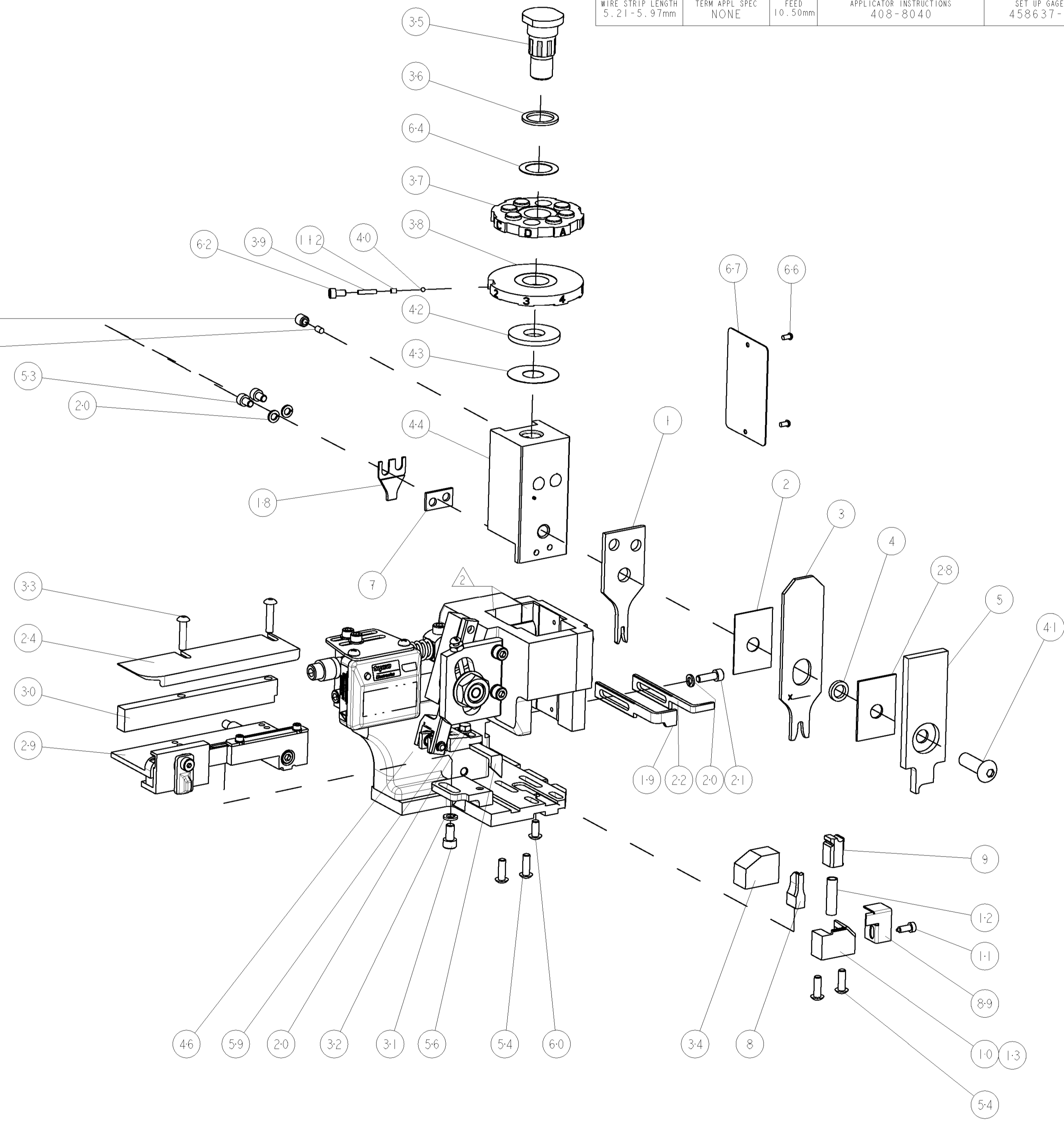
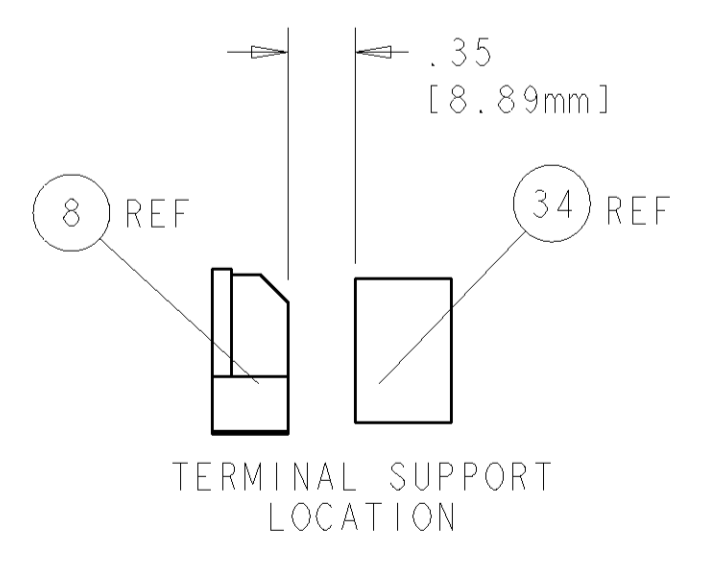
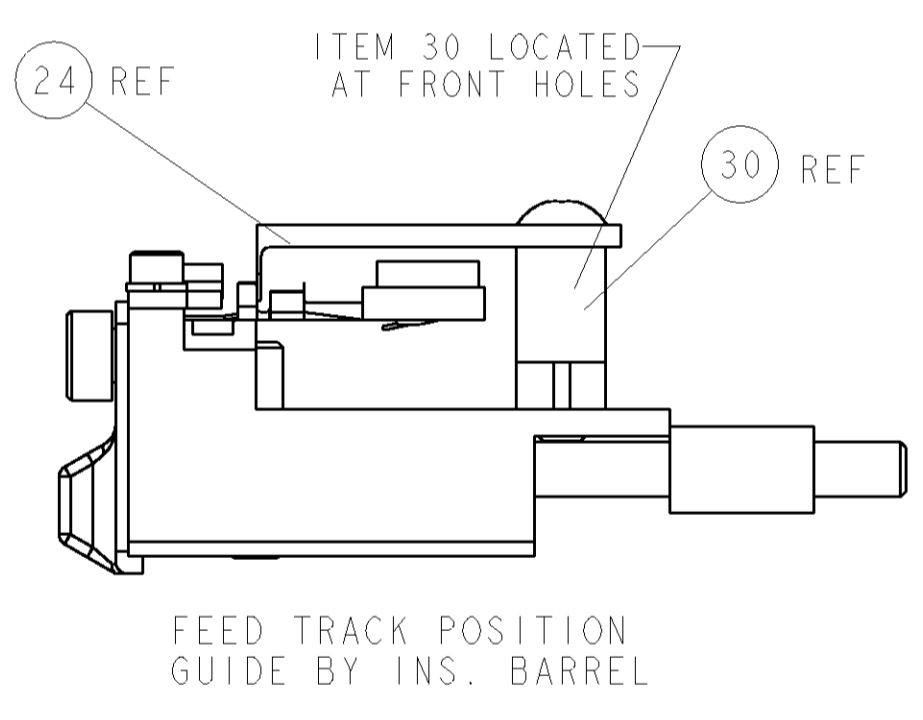
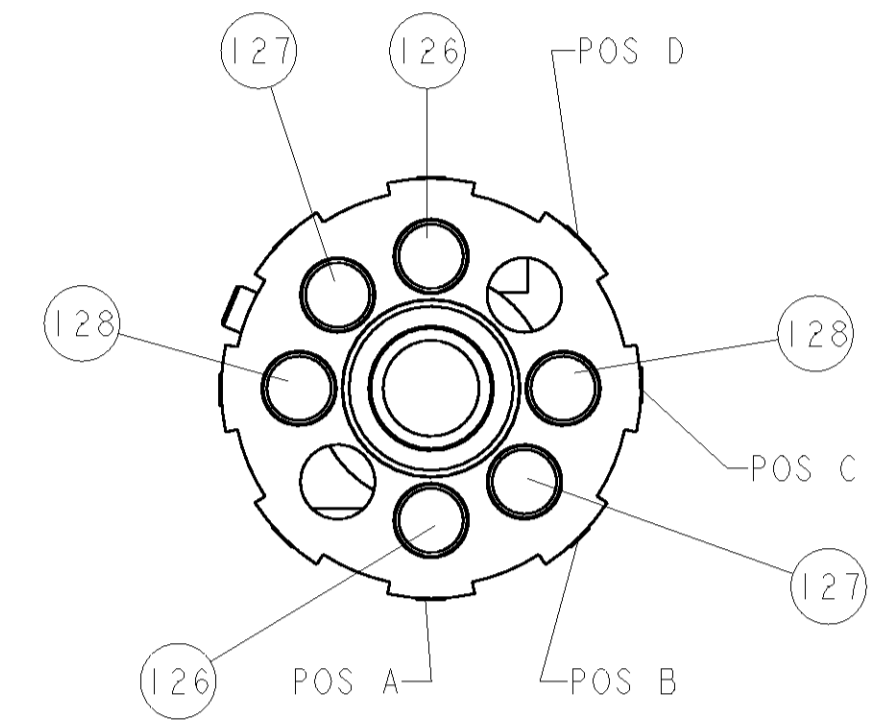
| PART NUMBER | REV | FIRST USED | POWER UNIT | FEED TYPE | DESCRIPTION |
|-------------|-----|------------|---------------|-----------|--------------------|
| 1852546-1 | A | 122500-1 | LEADMAKER | POST FEED | CUTS CARRIER |
| 1852546-2 | A | 565435-5 | BENCH MODEL K | PRE FEED | CUTS CARRIER |
| 1852546-3 | A | 354500-1 | BENCH MODEL G | PRE FEED | CUTS CARRIER |
| 1852546-6 | A | 122500-1 | LEADMAKER | POST FEED | CONTINUOUS CARRIER |
| 7-1852546-7 | A | - | - | - | SPARE PARTS |



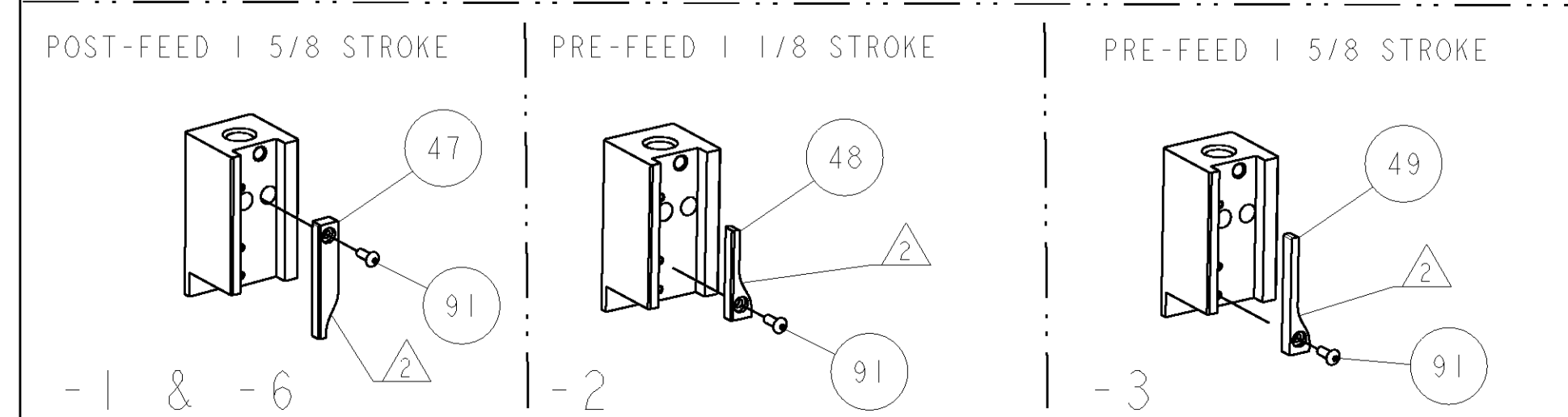
| TERMINAL NAME: TERMINAL LAMP SOCKET WEDGE BASE | | | | |
|--|-------------|------------------------------|-------------------------|-------------|
| SOCKET | PIN | TE TERMINAL - TE CRIMP SPECS | | |
| - | 1742395-1 | | | |
| | | PAD LTR | CRIMP HEIGHT | WIRE SIZE |
| - | - | A | 1.42±0.05mm [.056±.002] | 18AWG |
| - | - | B | 1.27±0.05mm [.050±.002] | 20AWG |
| - | - | C | 1.19±0.05mm [.047±.002] | 22AWG |
| - | - | D | - | - |
| | | CRIMP | SIZE | TYPE |
| - | - | WIRE | 1.78mm [.070] | F |
| - | - | INSUL | 3.56mm [.140] | O |
| | | FEED | APPLICATOR INSTRUCTIONS | SET UP GAGE |
| WIRE STRIP LENGTH | 5.21-5.97mm | TERM APPL SPEC | NONE | 408-8040 |
| | | | | 458637-1 |

| LOC | DIST | REV | DESCRIPTION | DATE | DWN | APPD |
|-----|------|-----|-------------|-----------|-----|------|
| A | 66 | | RELEASED | 07SEP2007 | BH | BH |

- △ RECOMMENDED SPARE PARTS
- △ GREASE LIGHTLY
- △ GUARD MUST BE IN PLACE WHEN OPERATING APPLICATOR IN A BENCH MACHINE



| | | | | | | | | |
|---|---|-----|-----|---|----|-------------|---------------------------------------|-----|
| - | 2 | 2 | 2 | 2 | - | 3-354779-6 | PIN, WIRE DISC, .3170 | 128 |
| - | 2 | 2 | 2 | 2 | - | 2-354779-8 | PIN, WIRE DISC, .3130 | 127 |
| - | 2 | 2 | 2 | 2 | - | 1-354779-4 | PIN, WIRE DISC, .3060 | 126 |
| - | - | - | REF | - | .. | 455749-1 | GUARD WINDOW | 116 |
| - | - | REF | - | - | .. | 679532-1 | INSERT, GUARD | 115 |
| - | 1 | 1 | 1 | 1 | - | 690603-1 | SPRING ASSIST AMP-O-MATOR APPLICATOR | 112 |
| - | 1 | 1 | 1 | 1 | - | 1-21002-7 | SCR, BTN SKT HD CAP 6-32 X .375 | 91 |
| - | 1 | 1 | 1 | 1 | - | 318563-1 | GUARD, FRONT CHIP | 89 |
| - | 1 | 1 | 1 | 1 | - | 4088040 | SF APPL INST 408-8040 | 72 |
| - | 1 | 1 | 1 | 1 | - | 217238-1 | GENERAL INSTRUCTION PKG | 71 |
| - | 1 | 1 | 1 | 1 | - | 461264-1 | PLATE, IDENTIFICATION | 67 |
| - | 2 | 2 | 2 | 2 | - | 21017-2 | SCREW, DRIVE | 66 |
| - | 1 | 1 | 1 | 1 | - | 986950-1 | WASHER, FLAT PRECISION | 64 |
| - | 1 | 1 | 1 | 1 | - | 21009-2 | SCR, SET, SELF LOCKING 1/4-20 X .250 | 63 |
| - | 1 | 1 | 1 | 1 | - | 23030-1 | SCR, SKT HD CAP 6-32 X .25 | 62 |
| - | 1 | 1 | 1 | 1 | - | 22733-8 | SCR, BHSC, SELF-LOCKING, 8-32 X .375 | 60 |
| - | 1 | 1 | 1 | 1 | - | 2-22603-0 | SCR, HEX HD CAP 8-32 X .312 | 59 |
| - | 1 | 1 | 1 | 1 | - | 458537-2 | PAWL, FEED | 56 |
| - | 4 | 4 | 4 | 4 | - | 2-21002-2 | SCR, BTN SKT HD CAP 8-32 X .500 | 54 |
| - | 2 | 2 | 2 | 2 | - | 2-21000-5 | SCR, SKT HD CAP 8-32 X .250 | 53 |
| - | - | - | - | - | .. | 690602-6 | CAM, PRE FEED, 1 5/8 | 49 |
| - | - | - | - | - | .. | 690602-5 | CAM, PRE FEED, 1 1/8 | 48 |
| - | 1 | - | - | - | - | 690501-4 | CAM, POST FEED, 1 5/8 | 47 |
| - | 1 | 1 | 1 | 1 | - | 459456-1 | APPL. BASIC SUB ASSY (SIDE WISE MOCA) | 46 |
| - | 1 | 1 | 1 | 1 | - | 690191-1 | PLUG, NYLON | 45 |
| - | 1 | 1 | 1 | 1 | - | 455673-1 | RAM, SIDE FEED | 44 |
| - | 1 | 1 | 1 | 1 | - | 690125-1 | SHIM SUB-ASSY | 43 |
| - | 1 | 1 | 1 | 1 | - | 690124-1 | WASHER, RAM (.115) | 42 |
| - | 1 | 1 | 1 | 1 | - | 7-21002-9 | SCR, BTN SKT HD CAP 5/16-24 X 1.00 | 41 |
| - | 1 | 1 | 1 | 1 | - | 23241-6 | BALL, STEEL | 40 |
| - | 1 | 1 | 1 | 1 | - | 690170-1 | SPRING, COMPRESSION | 39 |
| - | 1 | 1 | 1 | 1 | - | 690142-1 | DISC, INSULATION | 38 |
| - | 1 | 1 | 1 | 1 | - | 354777-1 | WIRE DISC, ASSEMBLY | 37 |
| - | 1 | 1 | 1 | 1 | - | 22480-5 | SPRING, COMPRESSION | 36 |
| - | 1 | 1 | 1 | 1 | - | 690212-1 | POST, RAM | 35 |
| - | 1 | 1 | 1 | 1 | - | 690786-6 | TERMINAL SUPPORT | 34 |
| - | 2 | 2 | 2 | 2 | - | 2-21002-4 | SCR, BTN SKT HD CAP 8-32 X .750 | 33 |
| - | 1 | 1 | 1 | 1 | - | 21024-5 | WASHER, SPRG LOCK, REG NO 10 | 32 |
| - | 1 | 1 | 1 | 1 | - | 3-21000-4 | SCR, SKT HD CAP 10-32 X .375 | 31 |
| - | 1 | 1 | 1 | 1 | - | 1320908-3 | SPACER, STRIP GUIDE | 30 |
| - | 1 | 1 | 1 | 1 | - | 1633091-1 | ASSEMBLY, STRIP GUIDE | 29 |
| - | 1 | 1 | 1 | 1 | - | 1-455888-0 | SPACER, CRIMPER | 28 |
| - | 1 | 1 | 1 | 1 | - | 1320928-2 | PLATE, STRIP GUIDE | 24 |
| - | 1 | - | - | - | - | 690472-2 | STRIPPER | 22 |
| - | 1 | 1 | 1 | 1 | - | 2-21000-7 | SCR, SKT HD CAP 8-32 X .500 | 21 |
| - | 4 | 4 | 4 | 4 | - | 21024-4 | WASHER, SPRG LOCK, REG NO 8 | 20 |
| - | - | - | - | - | - | 691353-1 | STRIPPER | 19 |
| - | 1 | 1 | 1 | 1 | - | 1-690518-1 | HOLD DOWN, TERMINAL | 18 |
| - | 1 | 1 | 1 | 1 | - | 679625-1 | SHEAR HOLDER, FRONT (NO CUT) | 13 |
| - | 1 | 1 | 1 | 1 | - | 3-22280-3 | SPRING, COMPRESSION | 12 |
| - | 1 | 1 | 1 | 1 | - | 1-690461-7 | STOP, SHEAR | 11 |
| - | - | - | - | - | - | 690459-1 | SHEAR HOLDER, FRONT | 10 |
| - | 1 | 1 | 1 | 1 | - | 462006-1 | FLOATING SHEAR, FRONT | 9 |
| 1 | 1 | 1 | 1 | 1 | - | 8-1633117-9 | ANVIL, COMBINATION | 8 |
| - | 1 | 1 | 1 | 1 | - | 6-240641-4 | SPACER | 7 |
| - | - | - | - | - | .. | - | - | 6 |
| - | 1 | 1 | 1 | 1 | - | 2-455889-0 | DEPRESSOR, SHEAR | 5 |
| - | 1 | 1 | 1 | 1 | - | 1-238011-0 | BLOCK, CRIMPER SPACER | 4 |
| 1 | 1 | 1 | 1 | 1 | - | 5-683454-0 | CRIMPER, INSULATION O | 3 |
| - | 1 | 1 | 1 | 1 | - | 455888-5 | SPACER, CRIMPER | 2 |
| 1 | 1 | 1 | 1 | 1 | - | 3-456404-5 | CRIMPER, WIRE PREMIUM | 1 |



| DIMENSIONS: | | TOLERANCES UNLESS OTHERWISE SPECIFIED: | |
|-------------|---------|--|------------------|
| INCHES | 0 PLC ± | 1 PLC ± | 2 PLC ± |
| | 3 PLC ± | 4 PLC ± | ANGLES ± |
| MATERIAL | FINISH | WEIGHT | CUSTOMER DRAWING |

| | | | |
|------------------|--------------------------|------------|---------------|
| DATE | 21AUG2007 | DRN | 21AUG2007 |
| CHK | S.ZOU | APPD | S.YABE |
| NAME | SIDE FEED HDM APPLICATOR | | |
| PRODUCT SPEC | - | | |
| APPLICATION SPEC | - | | |
| SIZE | CAGE CODE | DRAWING NO | RESTRICTED TO |
| A1 | 00779 | 1852546 | - |
| SCALE | 3:5 | SHEET | 1 OF 1 |
| REV | A | | |

CUSTOMER VIEWABLE ASSEMBLY