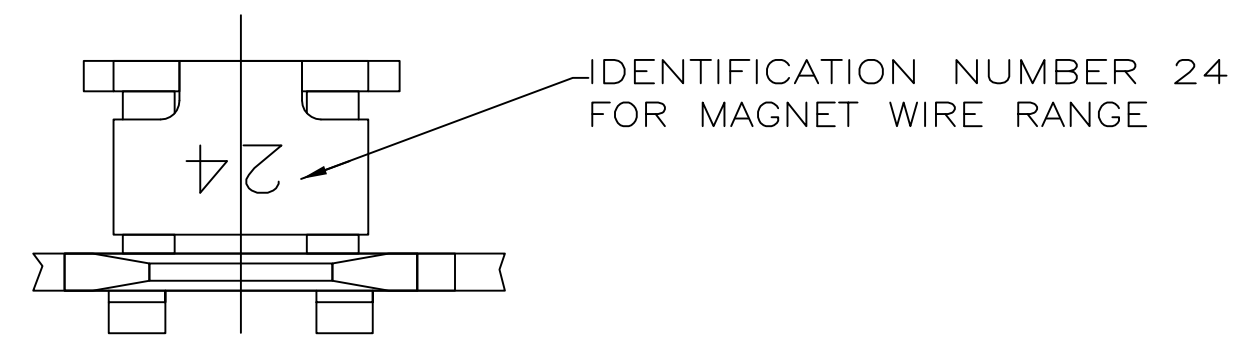
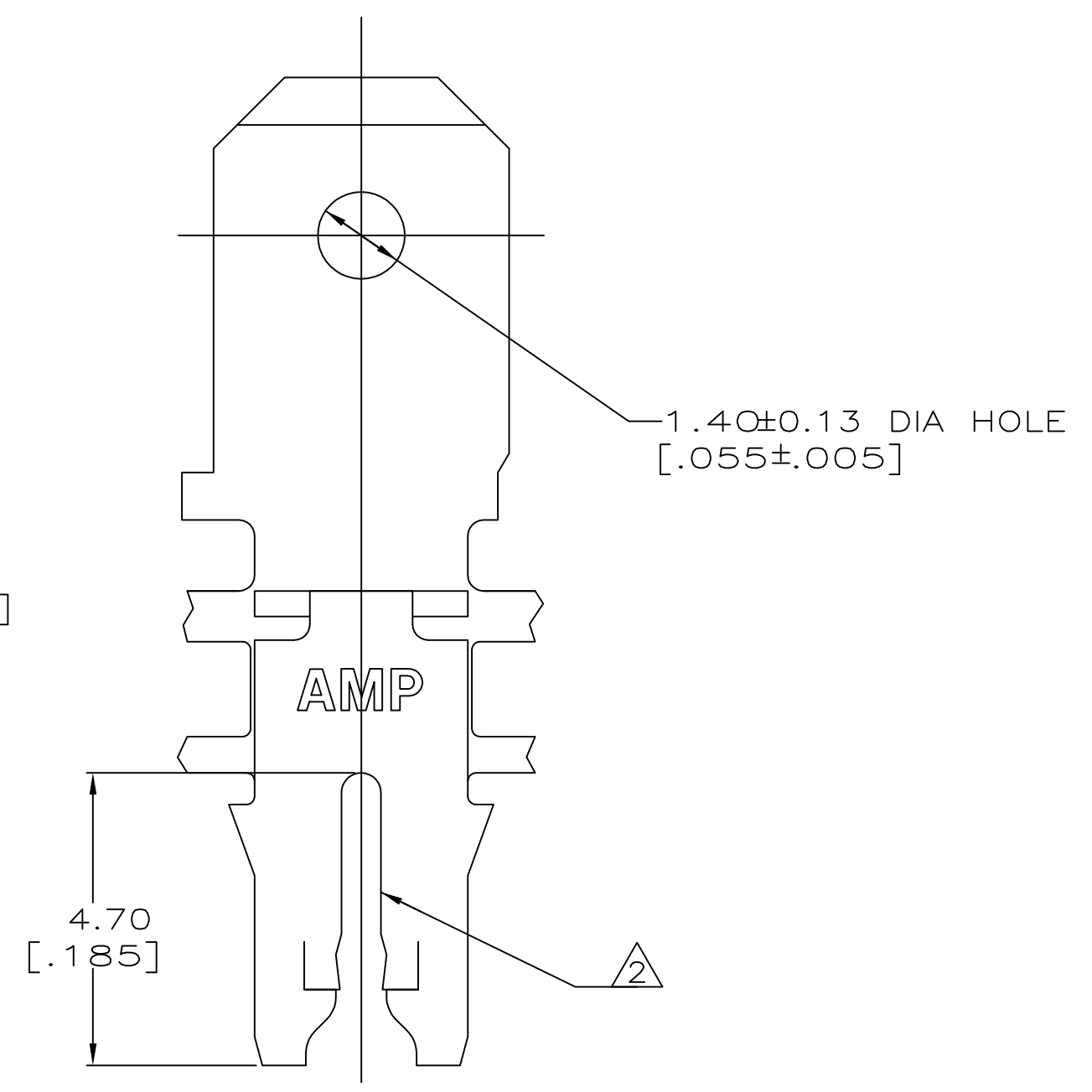
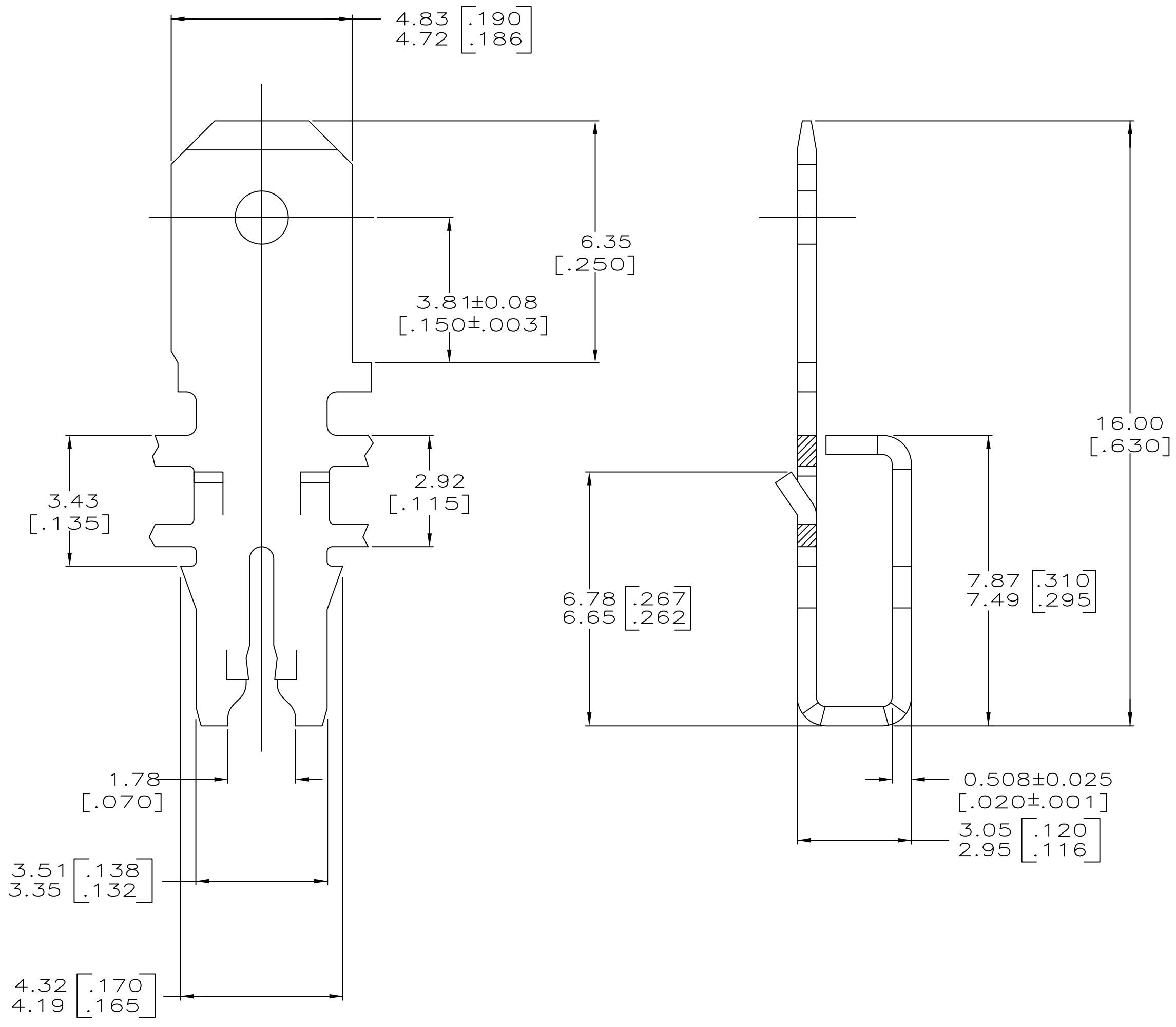


THIS DRAWING IS UNPUBLISHED. RELEASED FOR PUBLICATION
 © COPYRIGHT - By - ALL RIGHTS RESERVED.

LOC		DIST		REVISIONS					
AF		50		P	LTR	DESCRIPTION	DATE	DWN	APVD
				B3		ECR-15-005665	10AUG2015	BDA	PKS



- CONTINUOUS STRIP ON REELS WITH TERMINALS LOCATED ON 5.59±0.08 [.220±.003] CENTERS. SLOT TERMINATES A SINGLE MAGNET WIRE ONLY. COPPER RANGE: 0.91-1.15mm [#19-#17] AWG. ALUMINUM RANGE: 0.95-1.15mm [#18.5-#17] AWG. ALUMINUM WIRE RANGE APPLIES FOR POST-TIN PLATED VERSIONS ONLY. ALTERNATE RANGE: 0.95-1.15mm [#18.5-#17] AWG.
- AFTER INSERTION INTO PLASTIC HOLDER TAB PORTION MUST BE BENT OVER 45° TO 90° OR
- POTTED-IN TO PREVENT PULL-OUT WHEN MATING RECEPTACLE IS DISCONNECTED.



63782-1

THIS DRAWING IS A CONTROLLED DOCUMENT.		DWN	22/MAR/94	TE Connectivity	
		CHK	25/MAR/94	NAME	
		APVD	28/MAR/94	TERMINAL, TAB,	
		NELSON E NEFF		4.75 [.187] FASTON™	
		108-2012		MAG-MATE™	
		114-2067		SIZE	A2
		CUSTOMER DRAWING		CAGE CODE	00779
				DRAWING NO	63782
				RESTRICTED TO	-
				SCALE	10:1
				SHEET	1 of 1
				REV	B3