

MFG. ENG.	APPROVED BY:	DATE:	QA	APPROVED BY:	DATE:
-----------	--------------	-------	----	--------------	-------

ASS'Y P/N	CONTACT QTY.	CABLE O.D. RANGE
W18282-2PG-P-311	2	0.09 - 0.14 [2.3 - 3.6]
W18282-2PG-P-315	2	0.15 - 0.17 [3.8 - 4.3]
W18282-2PG-P-318	2	0.18 - 0.20 [4.6 - 5.1]
W18282-3PG-P-311	3	0.09 - 0.14 [2.3 - 3.6]
W18282-3PG-P-315	3	0.15 - 0.17 [3.8 - 4.3]
W18282-3PG-P-318	3	0.18 - 0.20 [4.6 - 5.1]
W18282-XPG-P-3XX		

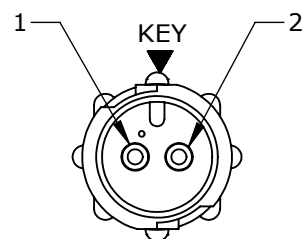
NOTES:

1. ALL PARTS ARE BULK PACKED.
2. REFER TO DRAWING HPMCSTD FOR CONTACT PATTERNS.
3. ALL DIMENSIONS ARE REFERENCE ONLY IN INCHES [mm], WITHIN ±0.015 UNLESS OTHERWISE NOTED.

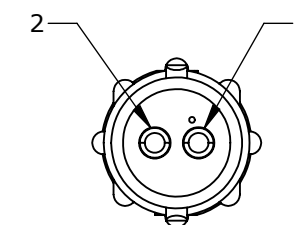
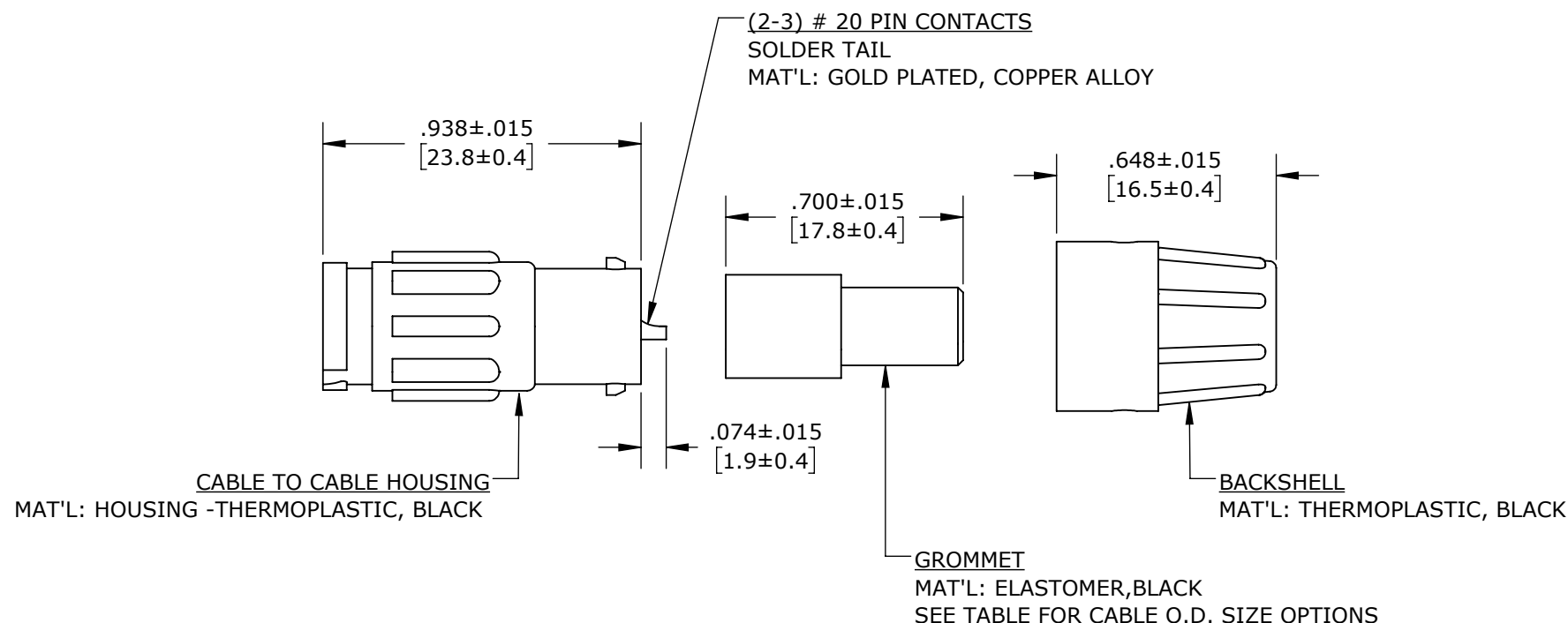
OF CONTACTS

GROMMET SIZE = CABLE O.D. RANGE:

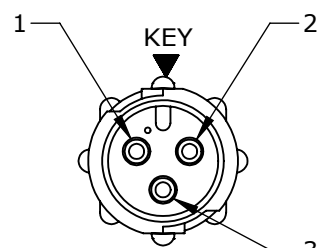
- 311 = 0.09 - 0.14 [2.3 - 3.6]
- 315 = 0.15 - 0.17 [3.8 - 4.3]
- 318 = 0.18 - 0.20 [4.6 - 5.1]



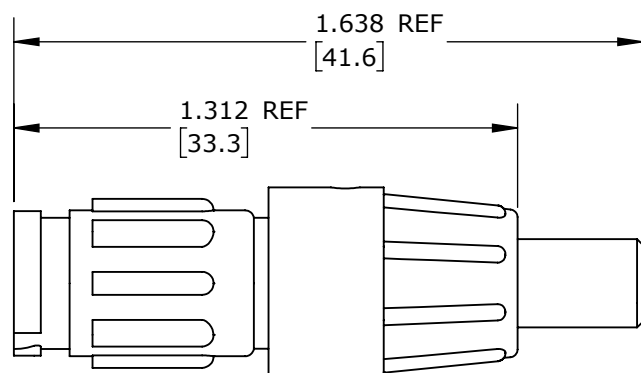
FACE VIEW
W18282-2PG-P-3XX



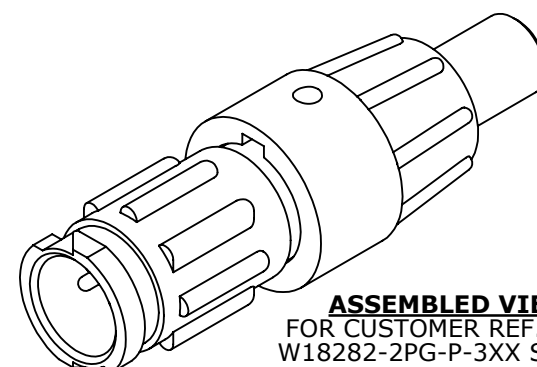
WIRING VIEW
W18282-2PG-P-3XX



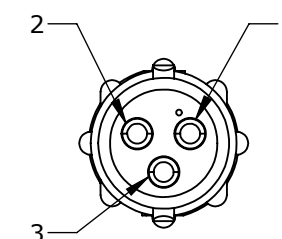
FACE VIEW
W18282-3PG-P-3XX



ASSEMBLED VIEW
FOR CUSTOMER REF. ONLY



ASSEMBLED VIEW
FOR CUSTOMER REF. ONLY
W18282-2PG-P-3XX SHOWN



WIRING VIEW
W18282-3PG-P-3XX

CUSTOMER PRINT

PART NUMBER: W18282-XPG-P-3XX

CUSTOMER APPROVAL


THIS DOCUMENT CONTAINS CONFIDENTIAL INFORMATION PROPRIETARY TO CONXALL CORPORATION. ANY REPRODUCTION, DISCLOSURE, OR USE OF THIS DOCUMENT /INFORMATION IS EXPRESSLY PROHIBITED UNLESS AUTHORIZED IN WRITING BY CONXALL CORPORATION.

APPROVED BY: _____
DATE: _____

RoHS COMPLIANT

DIMENSIONS IS BRACKETS [] ARE METRIC

PRELIMINARY

0A	JGK	8/22/19	DRAWING CREATED FOR PDR #18004.		
REV.	INIT.	DATE	DESCRIPTION		
	JGK	8/22/19	ALL INFORMATION ILLUSTRATED IS THE PROPERTY OF "CONXALL CORPORATION". UNAUTHORIZED DUPLICATION OR DISTRIBUTION OF THIS DOCUMENT IS PROHIBITED.		
			 601 E. WILDWOOD VILLA PARK, IL 60181		
			ALL UNITS ARE IN FEET, INCHES, FRACTION OF INCHES AND DECIMALS. UNLESS OTHERWISE SPECIFIED TOLERANCES: 3 PLACE DECIMALS ±.005 ANGLES ±1° FRACTIONS ±1/16 ▽ = CRITICAL CHARACTERISTIC FLAG PER SPEC. XXXX		
			APPROVED BY:	TITLE: CABLE TO CABLE CONN. ASS'Y (2-3) #20 PIN CONTACTS, SOLDER INSTA-CLICK, MICRO-CON-X STANDARD PRODUCT	
			SCALE: NTS	SIZE: B	SHEET: 1 OF 1
			FILE: W18282-XPG-P-3XX	DIRECTORY: SLW	CUSTOMER: W18282-XPG-P-3XX
				PART NUMBER: W18282-XPG-P-3XX	REV 0A