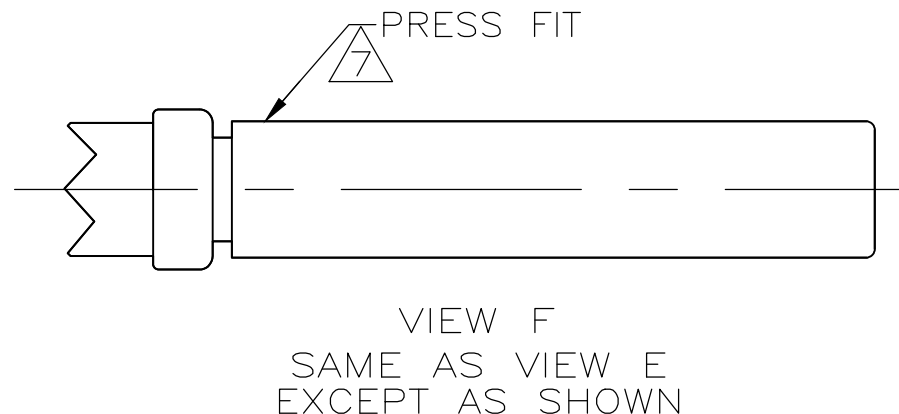
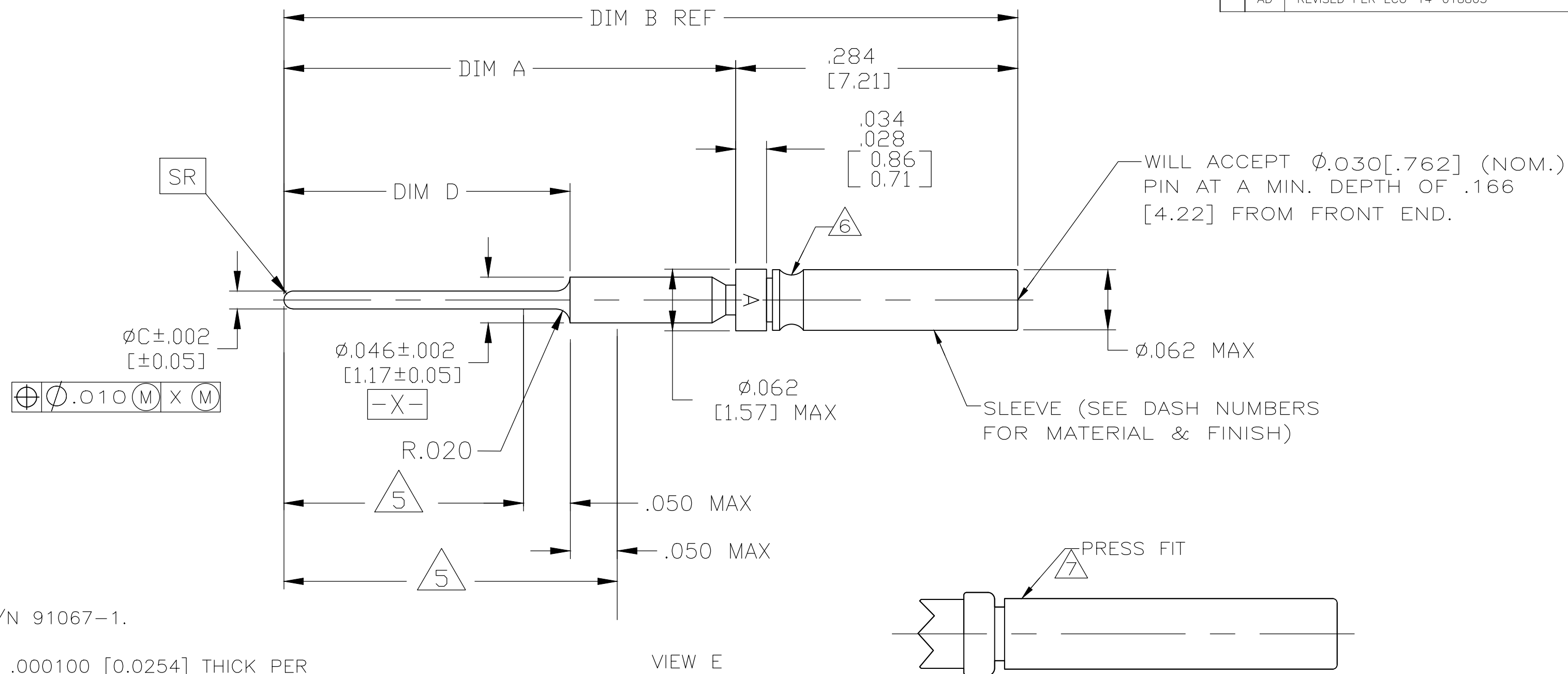


THIS DRAWING IS UNPUBLISHED. RELEASED FOR PUBLICATION
 © COPYRIGHT - By - ALL RIGHTS RESERVED.

| LOC | | DIST | | REVISIONS | | | |
|-----|-----|---------------------------|--|-----------|-----|------|--|
| P | LTR | DESCRIPTION | | DATE | DWN | APVD | |
| AD | | REVISED PER ECO-14-018805 | | 10JAN15 | MGM | CT | |



- 1. INSERTION/EXTRACTION TOOL AMP P/N 91067-1.
- 2. CONTACT BODY AND HOOD FINISH:
GOLD PLATED .000050 [0.0127] TO .000100 [0.0254] THICK PER ASTM-B-488, TYPE I, CODE C OVER COPPER PLATE
.000100 [0.0254] TO .000250 [0.0635] THICK PER SAE-AMS 2418-1.
- 3. CONTACT BODY FINISH:
GOLD PLATED .000050 [0.0127] TO .000100 [0.0254] THICK PER ASTM-B-488, TYPE I, CODE C OVER COPPER PLATE
.000100 [0.0254] TO .000250 [0.0635] THICK PER SAE-AMS 2418-1.
HOOD FINISH:
PASSIVATED PER ASTM-A-380
- 4. CONTACT BODY FINISH:
GOLD PLATED .000050 [0.0127] TO .000100 [0.0254] THICK PER ASTM-B-488, TYPE I, CODE C OVER NICKEL PLATE
.000050 [0.0127] TO .000150 INCH THICK PER QQ-N-290,
- 5. THIS AREA IS SOLDER DIPPED. 207684-8 & 1-207684-0 ONLY.
- 6. SLEEVE MAY BE CRIMPED OR DIMPLED ONTO CONTACT BODY.
- 7. SLEEVE MAY BE PRESS FIT, CRIMPED OR DIMPLED ONTO CONTACT BODY.
- 8. CONTACTS MEET ALL APPLICABLE PERFORMANCE REQUIREMENTS OF SAE-AS39029.
- 9. CONTACT BODY MATERIAL:
LEADED NICKEL COPPER OR COPPER ALLOY PER ASTM-B-197
HOOD MATERIAL:
BRASS PER ASTM-B-36 OR COPPER ALLOY PER ASTM-B-197
- 10. CONTACT BODY MATERIAL:
LEADED NICKEL COPPER OR COPPER ALLOY PER ASTM-B-197
HOOD MATERIAL:
STAINLESS STEEL PER ASTM-A-240
- 11. CONTACT BODY MATERIAL:
BERYLLIUM COPPER PER ASTM-B-197 OR ASTM-B-196.
HOOD MATERIAL:
STAINLESS STEEL, UNS S30500 IAW ASTM A240/A240M OR AMS5514.
HOOD FINISH:
PASSIVATED IAW AMS2700, METHOD 1, TYPE OPTIONAL, CLASS 4.
- 12. PRELIMINARY NOT RELEASED FOR PRODUCTION

| CALLOUT | VIEW | FINISH | MATERIAL | DIM D ± .010 | ØC | DIM B | DIM A | PART NO |
|---------|----------|--------|----------|--------------|------------|--------------|--------------|------------|
| 6 | VIEW E | 2 | 9 | .268[6.8] | .018[0.46] | .719[18.26] | .435[11.05] | 1-207684-2 |
| 5, 6 | VIEW E | 2 | 9 | .393[9.98] | .018[0.46] | .844[21.44] | .560[14.22] | 1-207684-0 |
| 6 | VIEW E | 2 | 9 | .498[12.64] | .020[0.51] | .949 [24.10] | .665 [16.89] | 207684-9 |
| 5, 6 | VIEW E | 2 | 9 | .293[7.44] | .018[0.46] | .744[18.90] | .460[11.68] | 207684-8 |
| 7 | VIEW F | 3 | 10 | .393[9.98] | .025[0.64] | .844[21.44] | .560[14.22] | 207684-7 |
| 7 | VIEW F | 4 | 11 | .643[16.33] | .018[0.46] | 1.094[27.79] | .810[20.57] | 207684-6 |
| 7 | VIEW F | 4 | 11 | .393[9.98] | .018[0.46] | .844[21.44] | .560[14.22] | 207684-5 |
| 7 | VIEW F | 4 | 10 | .393[9.98] | .025[0.64] | .844[21.44] | .560[14.22] | 207684-4 |
| 6 | VIEW E | 2 | 9 | .293[7.44] | .018[0.46] | .744[18.90] | .460[11.68] | 207684-3 |
| 6 | VIEW E | 2 | 9 | .643[16.33] | .018[0.46] | 1.094[27.79] | .810[20.57] | 207684-2 |
| 6 | VIEW E | 2 | 9 | .393[9.98] | .018[0.46] | .844[21.44] | .560[14.22] | 207684-1 |
| REMARKS | SEE VIEW | FINISH | MATERIAL | DIM D ± .010 | ØC | DIM B | DIM A | PART NO |

THIS DRAWING IS A CONTROLLED DOCUMENT.

| | | |
|---------------------------------|--|--|
| DWN T. ALEXANDER 11-15-91 | TE Connectivity | |
| CHK F. KINSEY 11-18-91 | | |
| APVD F. KINSEY 11-18-91 | | |
| NAME F. KINSEY | | |
| DIMENSIONS: INCHES [mm] | TOLERANCES UNLESS OTHERWISE SPECIFIED: | NAME SOCKET CONTACT, POSTED SIZE 22D |
| 0 PLC ± - | 1 PLC ± - | SIZE A2 |
| 2 PLC ± - | 3 PLC ± .005 [0.13] | CAGE CODE 00779 |
| 4 PLC ± - | ANGLES ± - | DRAWING NO C-207684 |
| MATERIAL SEE CALLOUT | FINISH SEE CALLOUT | RESTRICTED TO - |
| WEIGHT - | CUSTOMER DRAWING | SCALE 10:1 |
| SHEET 1 OF 1 | REV AD | |