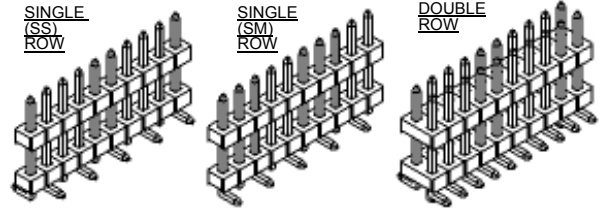
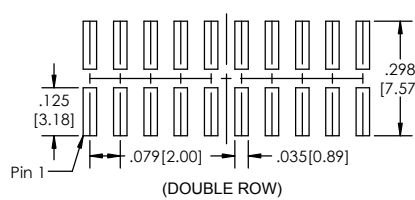
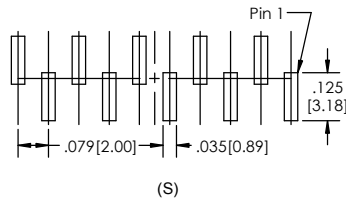
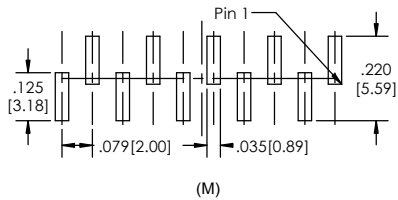


Recommended P.C. Board Layout
SCALE 4:1

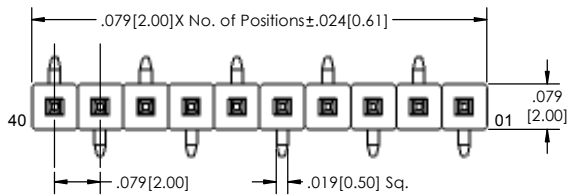
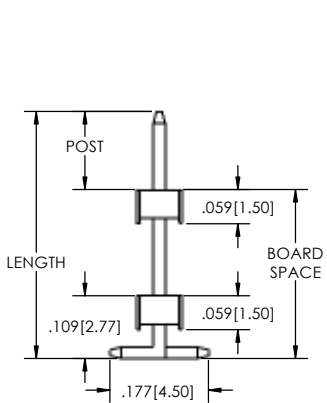
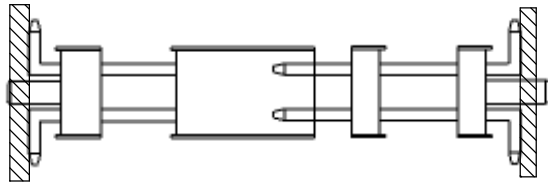


BSTCM-2 [XX] [X] [XXX] [XX] [XX] [XXX] [XXX] [X] [XX] [X] [XX] [L]F
(A) (B) (C) (D) (E) (F) (G) (H) (I) (J) (K) (L)

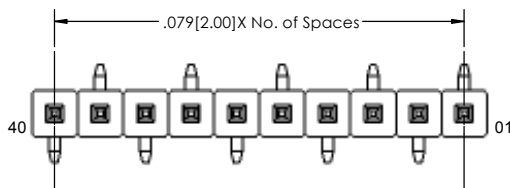
- A. Pins Per Row - 1 through 40
- B. Row Specification - S= Single Row, D= Double Row
- C. Desired Post Height - Please specify - e.g. .100(2.54)=100
- D. Pin Options - See Pin Options below
- E. Plating Options - See Plating Options below
- F. Desired Board Space - Please Specify required space - e.g. .100(2.54)=100, .200(5.08) min.
- G. Polarized Position - Leave blank if not needed - If required, specify empty pin position - e.g. 012 for Pin 12
- H. Footprint (Single Row only) - S= pin 1 left, M= pin 1 right
- I. Packing Information - TR= Tape and Reel, TB= Tube
- J. Pad - P= Plastic, O= No Pad - If left blank, selected at MLE's discretion
- K. Alignment Pin - Leave blank if not needed - AP= With - This option is only available for the Double Row
- L. Lead Free

Mates with:
BCSS.
BSSH.
BSSHC.
BSSQ.
BSSQC.
BSSQM.
LSMBC.
LSSHSM.
SMBC.
SSHQ.
SSHQR.
SSHR.
SSH.
SSHSM.
ULSMBC.

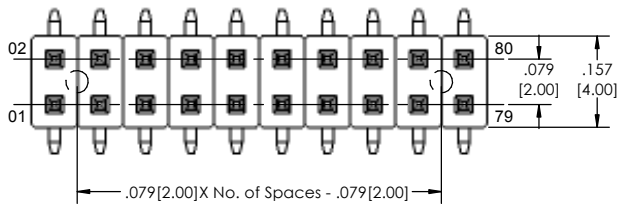
APPLICATION



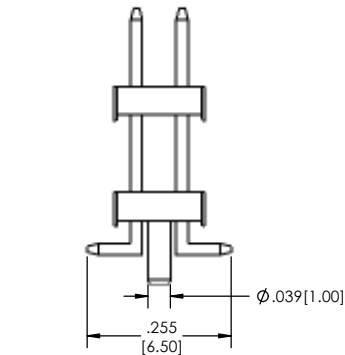
SINGLE (S) ROW



SINGLE (M) ROW



DOUBLE ROW



Plating options	
G	-10µ Gold on Contact Area/ Flash on Tail
T	-Matte Tin all Over
GT	-10µ Gold on Contact Area/ Matte Tin on Tail
H	-30µ Gold on Contact Area/ Matte Tin on Tail
F	-Gold Flash over Entire Pin
FT	-Gold Flash on Contact Area/ Matte Tin on Tail

Specifications:
Current Rating: 3.0 Ampere
Insulation Resistance: 1000M Ohms Min.
Dielectric Withstanding: 500V AC
Contact Resistance: 20M Ohms Max.
Operation Temperature: -40°C to +105°C
Max. Process Temperature
Peak: 260°C up to 10 secs.
Process: 230°C up to 60 secs.
Wave: 260°C up to 6 secs.
Reflow: 260°C up to 10 secs.
Manual Solder: 350°C up to 5 secs.

Materials:
Contact Material: Phosphor Bronze
Insulator Material: Nylon 6T
Plating: Au or Sn over 50µ" (1.27) Ni

Pin Option	
Length	
.255[6.48mm]	06
.309[7.85mm]	14
.329[8.36mm]	16
.349[8.86mm]	20
.388[9.86mm]	21
.467[11.86mm]	28
.487[12.37mm]	30
.507[12.88mm]	34
.526[13.36mm]	35
.546[13.87mm]	36
.605[15.37mm]	38
.645[16.38mm]	39
.665[16.89mm]	40
.684[17.37mm]	41
.762[19.35mm]	43
.803[20.40mm]	45
.882[22.40mm]	47
1.042[26.47mm]	49
1.102[27.99mm]	50

Post + Board Space must not exceed Overall Length

Tails may be clipped to achieve specific dimensions.
Products cut to specific sizes are uncancelable/nonreturnable.
Parts are subject to change without notice.



PROPRIETARY AND CONFIDENTIAL
THE INFORMATION CONTAINED IN THIS DRAWING IS THE SOLE PROPERTY OF Major League Electronics. ANY REPRODUCTION IN PART OR AS A WHOLE WITHOUT THE WRITTEN PERMISSION OF Major League Electronics IS PROHIBITED.

UNLESS OTHERWISE SPECIFIED:		NAME	DATE
DRAWN		EOW	01/28/14
CHECKED		GW	01/28/14
ENG APPR.			
MFG APPR.			
ADDRESS:		2533 Centennial Blvd. Jeffersonville, IN 47130 Phone: 812-670-4174 Fax: 812-670-4175 E-Mail: mle@mlelectronics.com	
INTERPRET GEOMETRIC TOLERANCING PER:			
MATERIAL:			
FINISH:			
NEXT ASSY	USED ON		
APPLICATION	DO NOT SCALE DRAWING		

TITLE: BSTCM-2 SERIES
SIZE DWG. NO. **C** REV **B**
SCALE 6:1 SHEET 1 OF 1