

1

2

3

4

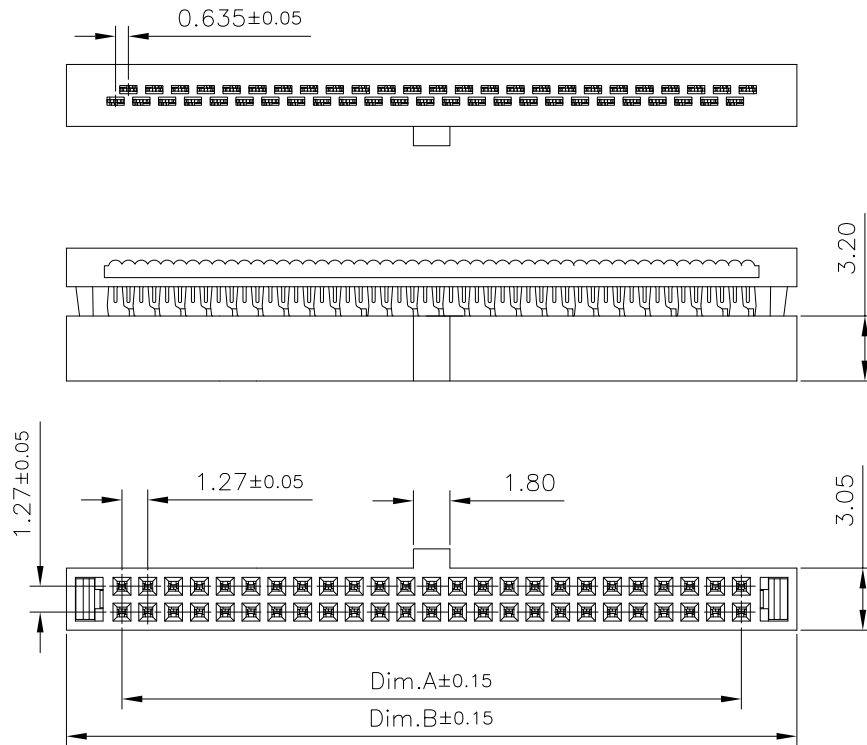
5

A

B

C

D

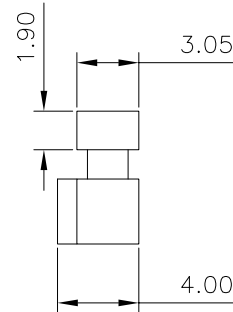


Specifications:

Current rating:1.0A AC,DC
 Voltage rating:50V AC, DC
 Contact resistance:20m ohm Max
 Insulation resistance:1000M ohm Min
 Withstanding voltage:500V AC/minute
 Operating Temperature: $-40^{\circ}\text{C} \sim +105^{\circ}\text{C}$

Materials:

Insulator:PBT UL94V-0
 Standard Color;Black
 Terminal:Phosphor Bronze
 Finish:Gold Plated



Dimension:

Pin.No	Dim.A	Dim.B	Pin.No	Dim.A	Dim.B
6	2.54	8.00	28	16.51	21.97
8	3.81	9.27	30	17.78	23.24
10	5.08	10.54	34	20.32	25.78
12	6.35	11.81	40	24.13	29.59
14	7.62	13.08	44	26.67	32.13
16	8.89	14.35	50	30.48	35.94
18	10.16	15.62			
20	11.43	16.89			
24	13.97	19.43			
26	15.24	20.70			

Mating Part Number

3220-ALL	3210-XX-001-11-XX	3210-XX-001-12-XX
3210-XX-002-12-XX	3210-XX-003-12-XX	

RoHS Compliant

DRAWN:

Jerry

GENERAL TOLERANCE:

.X= ± 0.20
 .XX= ± 0.15

CnC Tech

Industrial Cable and Connector Technology

CHECKED:

UNIT: MM

DESCRIPTION:

1.27x1.27mm Flat Cable IDC Socket

SIZE

APPROVAL:

SCALE:1:1

PART NO:

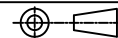
3230-XX-0102-00

A4

05-FEB-2020

Rory

PROJECTION:



REV

DATE

FILE

BY