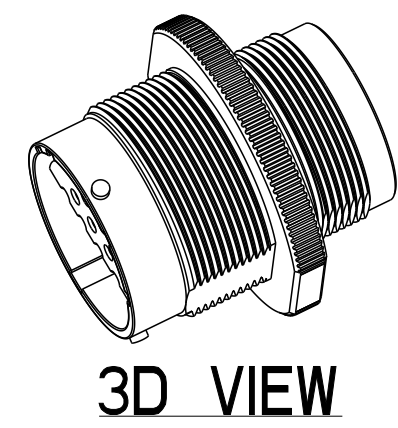
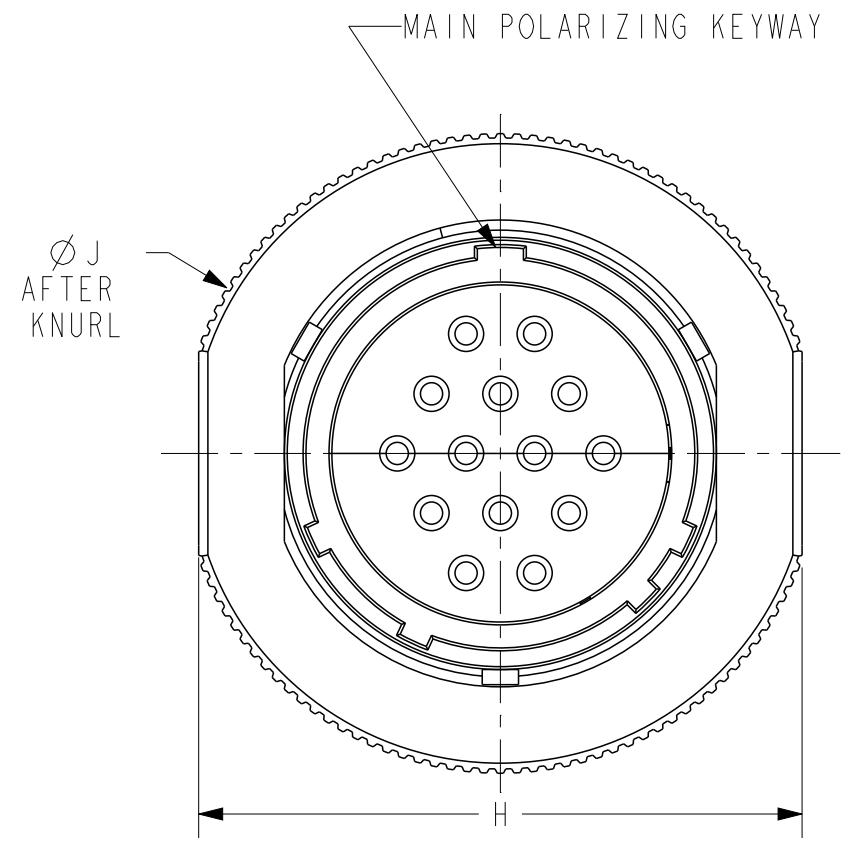
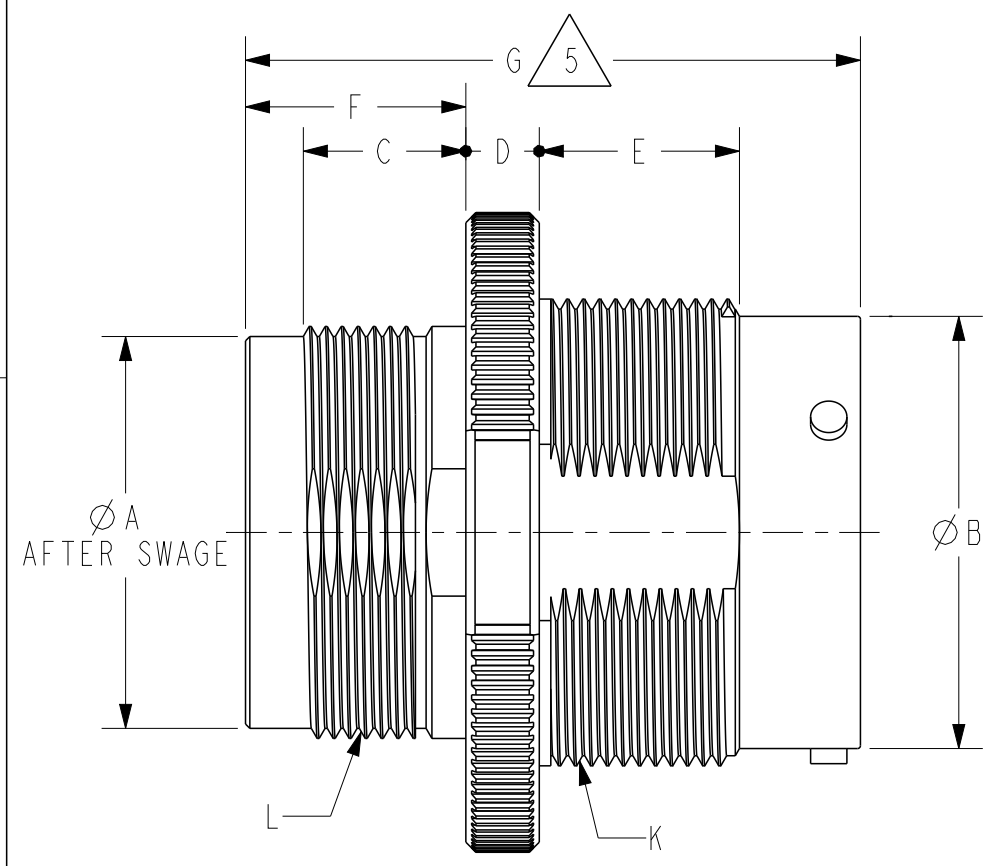


REVISIONS					
P	LTR	DESCRIPTION	DATE	DWN	APVD
C		REVISED PER E.O P20543	7/14/10	I.G	RDR
D		REVISED PER PCN E-18-018867	12/04/18	J.A	D.M
D1		REVISED PER PCN E-19-007592	01/09/20	CO	IG
D2		REVISED PER PCN E-20-002582	02/21/2020	CO	IG



PART NUMBER	SIZE	Ø A [mm]	Ø B REF [mm]	C [mm]	D [mm]	E [mm]	F [mm]	G REF [mm]	H [mm]	Ø J [mm]	K THREAD	L THREAD
8NXXXX-24-XXP/S	24	Ø 1.368 [34.75]	Ø 1.500 [38.10]	.565 [14.35]	.255 [6.48]	.695 [17.65]	.765 [19.43]	2.248 [57.10]	2.095 [53.21]	2.220 [56.39]	1.625-18UNEF-2A MODIFIED	1.4375-18UNEF-2A MODIFIED
8NXXXX-32-XXP/S	32	Ø 1.925 [48.90]	Ø 2.110 [53.59]	.520 [13.21]	.300 [7.62]	.695 [17.65]	.720 [18.29]	2.348 [59.64]	2.925 [74.30]	3.200 [81.28]	2.250-16UN-2A	2.000-18UNS-2A MODIFIED

9. SEE SHEET 2 FOR CONTINUED NOTES

8. PLATING: CLEAR TRIVALENT CHROMATE CONVERSION COATING (ROHS COMPLIANT)

7. MATERIAL: RECEPTACLE HOUSING:AL 6000 SERIES; GROMMET:VMQ (RED-ORANGE); RETAINING RING: PA66 GF10

6. PART NUMBER INFO: XXXX = CATERPILLAR PART NO.
24/32 = RECEPTACLE SHELL SIZE; XX = ARRANGEMENT NO.

5. TOTAL DIMENSION WITH WIRE SEAL.

4. FOR CONTACTS AND WIRES PERFORMANCE AND APPLICATION CHARACTERISTICS SEE CUSTOMER DRAWING 4025-001-0000.

3. FOR ARRANGEMENT OF CONTACT LOCATION SEE CUSTOMER DRAWING 4025-006-0000.

2. RECEPTACLE IS SUPPLIED WITH DUST CAP PN 6VI830 (SIZE 24), AND 6VI827 (SIZE 32) (NOT SHOWN).

1. CONSULT THE FACTORY FOR ELECTRICAL AND MATERIAL SPECIFICATIONS.

NOTES:

CONTACT SIZE	MIN. INSUL O.D.	MAX. INSUL O.D.	WIRE RANGE [mm ²] REF ONLY
4	.280 [7.11]	.420 [10.67]	4 AWG [21.0]
8	.190 [4.83]	.240 [6.10]	8-10 AWG [8.0-5.0]
12	.134 [3.40]	.170 [4.32]	10-14 AWG [5.0-2.0]
16	.100 [2.54]	.134 [3.40]	14-20 AWG [2.0-0.5]

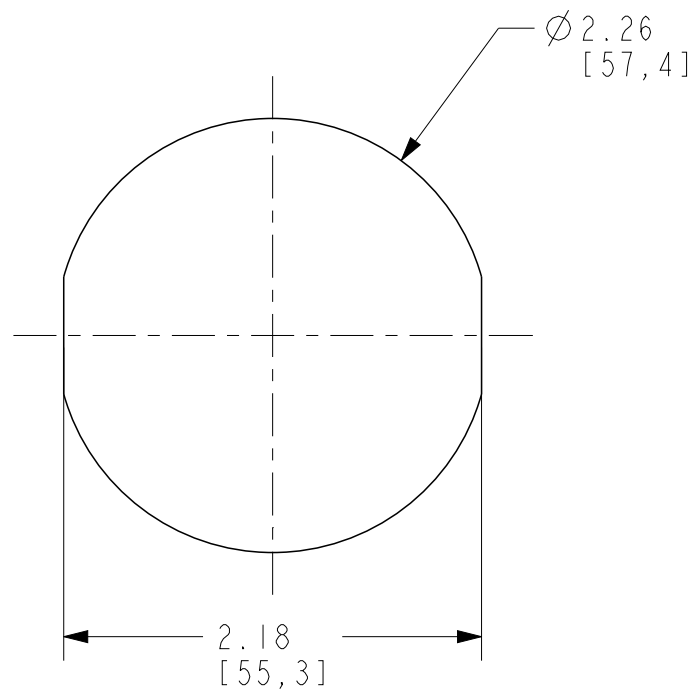
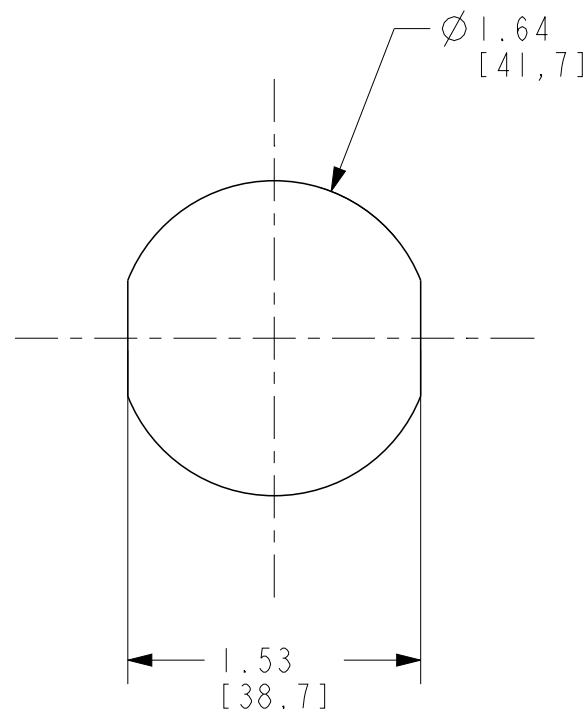
THIS DRAWING IS A CONTROLLED DOCUMENT.		DWN I. GRANTCHAROVA 3/24/08	STE TE Connectivity	
DIMENSIONS: in [mm]		CHK R. MILLIGAN 7/14/10		
TOLERANCES UNLESS OTHERWISE SPECIFIED:		APVD S. BEARD 7/14/10	NAME RECEPTACLE CONNECTOR SHELL SIZE 24 & 32 C.E. SERIES	
0 PLC ±		PRODUCT SPEC -	SIZE A3	CAGE CODE 00779
1 PLC ±		APPLICATION SPEC -	DRAWING NO C-8NXXXX-24/32-XXP/S	RESTRICTED TO -
2 PLC ±		WEIGHT -	SCALE 1:1	SHEET 1 OF 2
3 PLC ±.025 [.64]		CUSTOMER DRAWING	REV D2	
4 PLC ±				
ANGLES ±				
FINISH 7				
8				

REVISIONS

P	LTR	DESCRIPTION	DATE	DWN	APVD
-	-	SEE SHEET 1	-	-	-

SIZE 24
RECOMMENDED PANEL CUTOUT

SIZE 32
RECOMMENDED PANEL CUTOUT



TE INTERNAL PN	DEUTSCH PN	REV	ARRANGEMENT	CONTACT SIZE	QTY	CONTACT TYPE
8N1513-32-37P	8N1513-32-37P	K	32-37	16	37	PIN
8N1515-32-24P	8N1515-32-24P	K	32-24	16	24	PIN
8N1517-32-25P	8N1517-32-25P	K	32-25	4	2	PIN
				8	3	
				12	4	
8N1519-32-12P	8N1519-32-12P	K	32-12	4	1	PIN
				8	3	
				12	8	
8N1534-24-20P	8N1534-24-20P	K	24-20	16	20	PIN
8N1526-24-15P	8N1526-24-15P	K	24-15	8	1	PIN
				12	3	
				16	11	
8N1528-24-14P	8N1528-24-14P	K	24-14	16	14	PIN
8N1530-24-12P	8N1530-24-12P	K	24-12	4	1	PIN
				16	11	
8N1532-24-7P	8N1532-24-7P	K	24-7	4	1	PIN
				8	2	
				12	3	
				16	1	

11. ENDBELL MOUNTING TORQUE:
 - SIZE 24
 124 ± 17.7 in-lbf [14 ± 2 Nm]
 - SIZE 32
 159.31 ± 35.4 in-lbf [18 ± 4 Nm]

10. PANEL NUT MOUNTING TORQUE:
 - SIZE 24
 361 ± 60.2 in-lbf [40.8 ± 6.8 Nm]
 - SIZE 32
 1625 ± 120.4 in-lbf [183.6 ± 13.6 Nm]

NOTES: (CONTINUED)

THIS DRAWING IS A CONTROLLED DOCUMENT.		DWN I. GRANTCHAROVA 3/24/08	TE Connectivity	
DIMENSIONS: in [mm]		CHK R. MILLIGAN 7/14/10		
TOLERANCES UNLESS OTHERWISE SPECIFIED:		APVD S. BEARD 7/14/10	NAME RECEPTACLE CONNECTOR SHELL SIZE 24 & 32 C.E. SERIES	
0 PLC ± 1 PLC ± 2 PLC ± 3 PLC ±.025 [.64] 4 PLC ± ANGLES ±		PRODUCT SPEC -	RESTRICTED TO -	
MATERIAL 7		APPLICATION SPEC -	SIZE A3	CAGE CODE 00779
FINISH 8		WEIGHT -	DRAWING NO C=8NXXXX-24/32-XXP/S	
CUSTOMER DRAWING			SCALE 1:1	SHEET 2 OF 2
			REV D2	