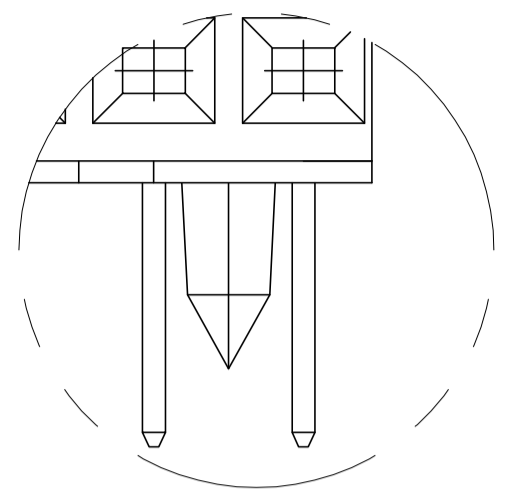
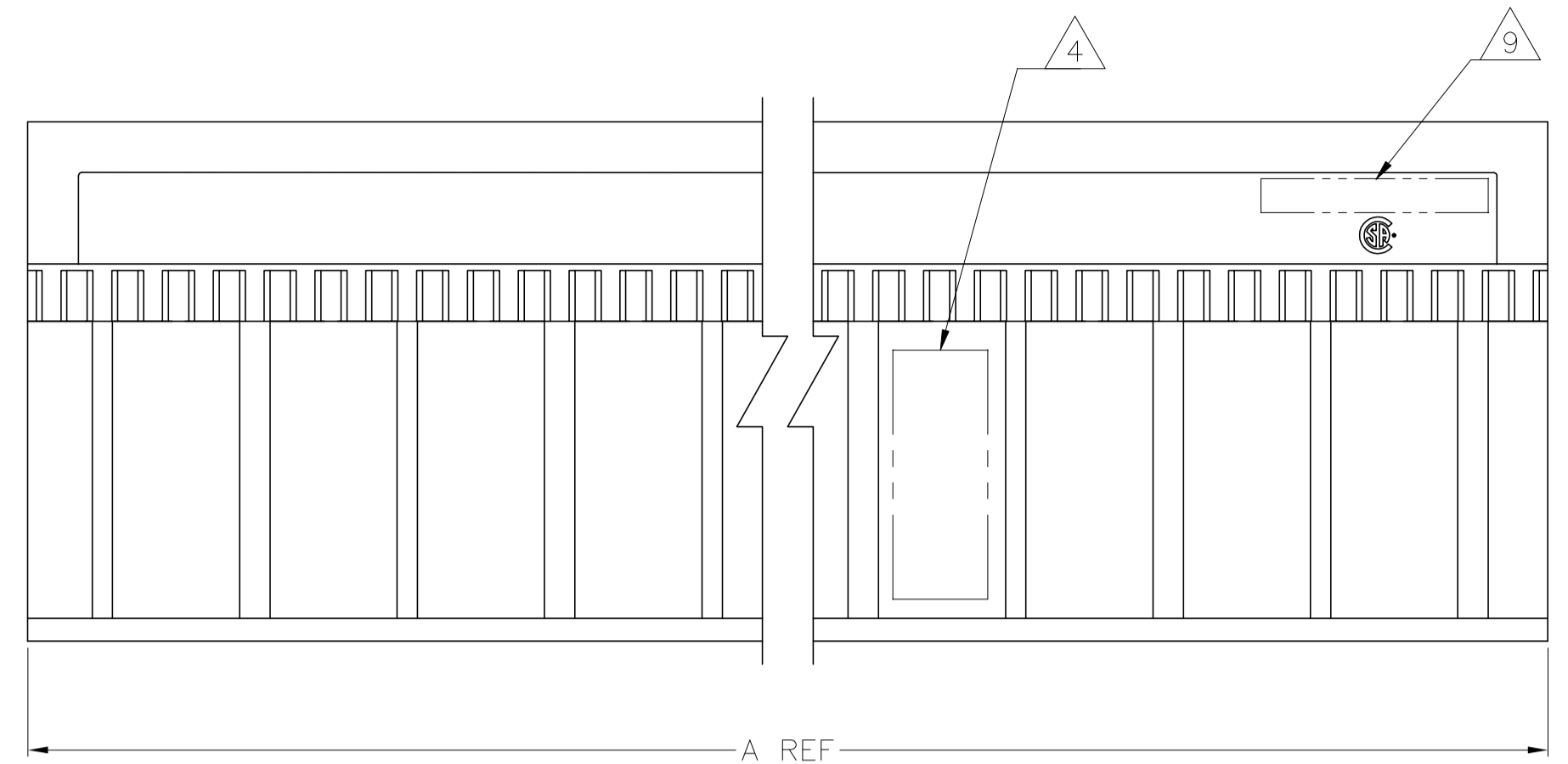
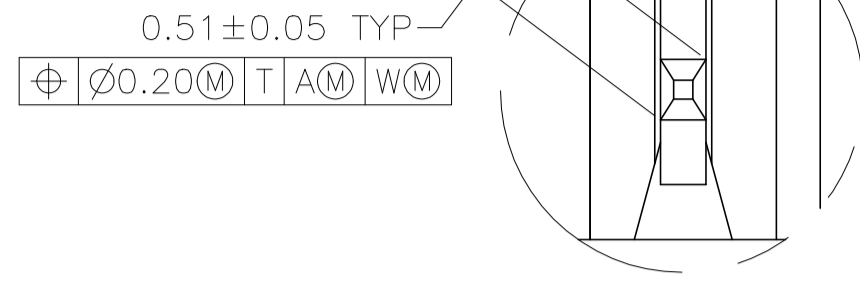


REVISIONS				
P	LTR	DESCRIPTION	DATE	APP'D
B		REVISED PER ECO-18-018290	03OCT2019	AP DS

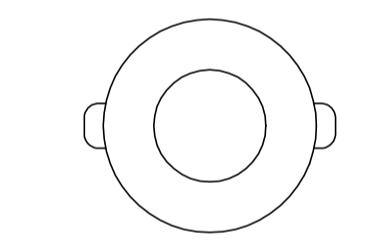
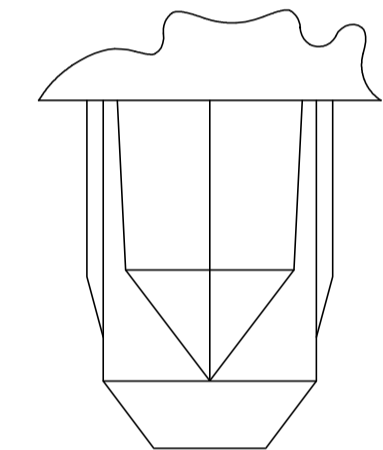


DETAIL X
SCALE 10:1

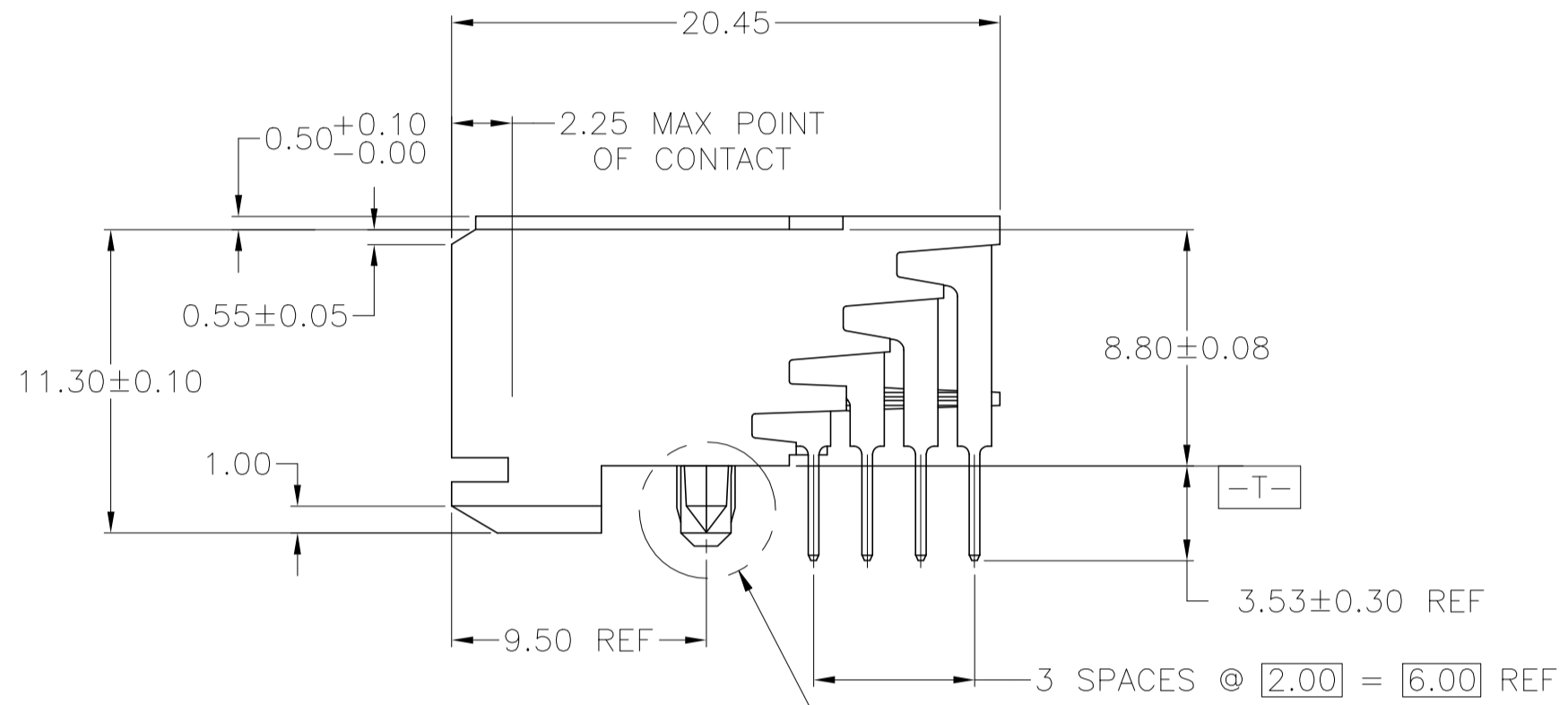
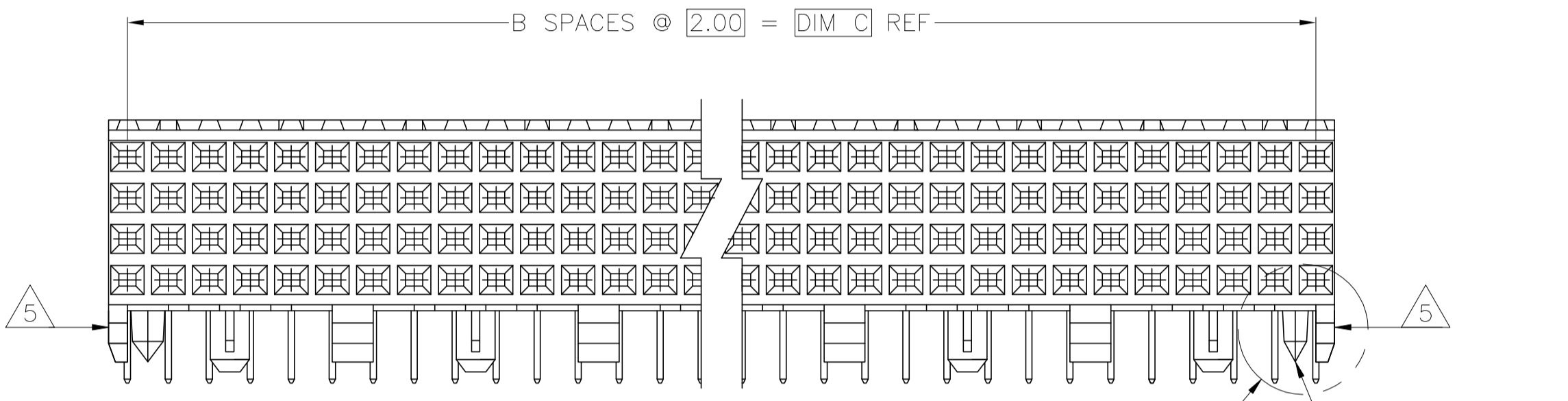


DETAIL Z
SCALE 20:1

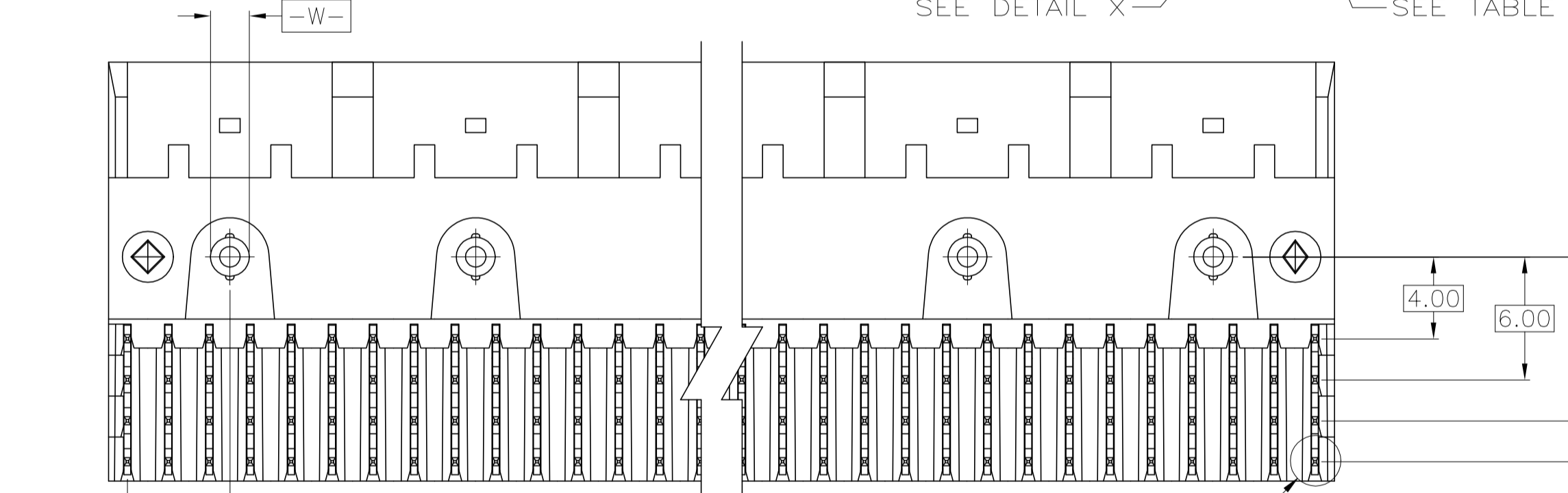
- 1 HOUSING MATERIAL: LIQUID CRYSTAL POLYMER.
COLOR: NATURAL.
- 2 CONTACT MATERIAL: PHOSPHOR-BRONZE.
- 3 CONTACT FINISH:
UNDERPLATE (ENTIRE CONTACT) -
0.00127 MIN NICKEL PER SAE-AMS-QQ-N-290.
ON MATING SURFACES-
CONFORMS TO ALL TESTING SPECIFIED FOR TELCORDIA
UNCONTROLLED ENVIRONMENT
ON LEADS-
0.00381 MIN TIN PER ASTM B 545, OVER UNDERPLATE
LUBRICATION (MIN MATING SURFACES):
SURFACE CONDITIONER AFTER PLATING.
- 4 PART MARKING, LOCATED APPROXIMATELY AS SHOWN.
- 5 CUSTOMIZED PART, HOUSING MOLDED WITHOUT END GUIDE LUGS.
- 6 OBSOLETE PART NUMBER.
- 7 CONTACT FINISH:
UNDERPLATE (ENTIRE CONTACT) -
0.00127 MIN NICKEL PER SAE-AMS-QQ-N-290.
ON MATING SURFACES-
CONFORMS TO ALL TESTING SPECIFIED FOR TELCORDIA
UNCONTROLLED ENVIRONMENT
ON LEADS-
FLASH GOLD PER ASTM B 488, OVER UNDERPLATE
LUBRICATION (MIN MATING SURFACES):
SURFACE CONDITIONER AFTER PLATING.
- 8 OBSOLETE PARTS: OBSOLETE CIS STREAMLINING PER
D.RENAUD/D.SINISI
- 9 TE OR TE CONNECTIVITY LOGO IS LOCATED.



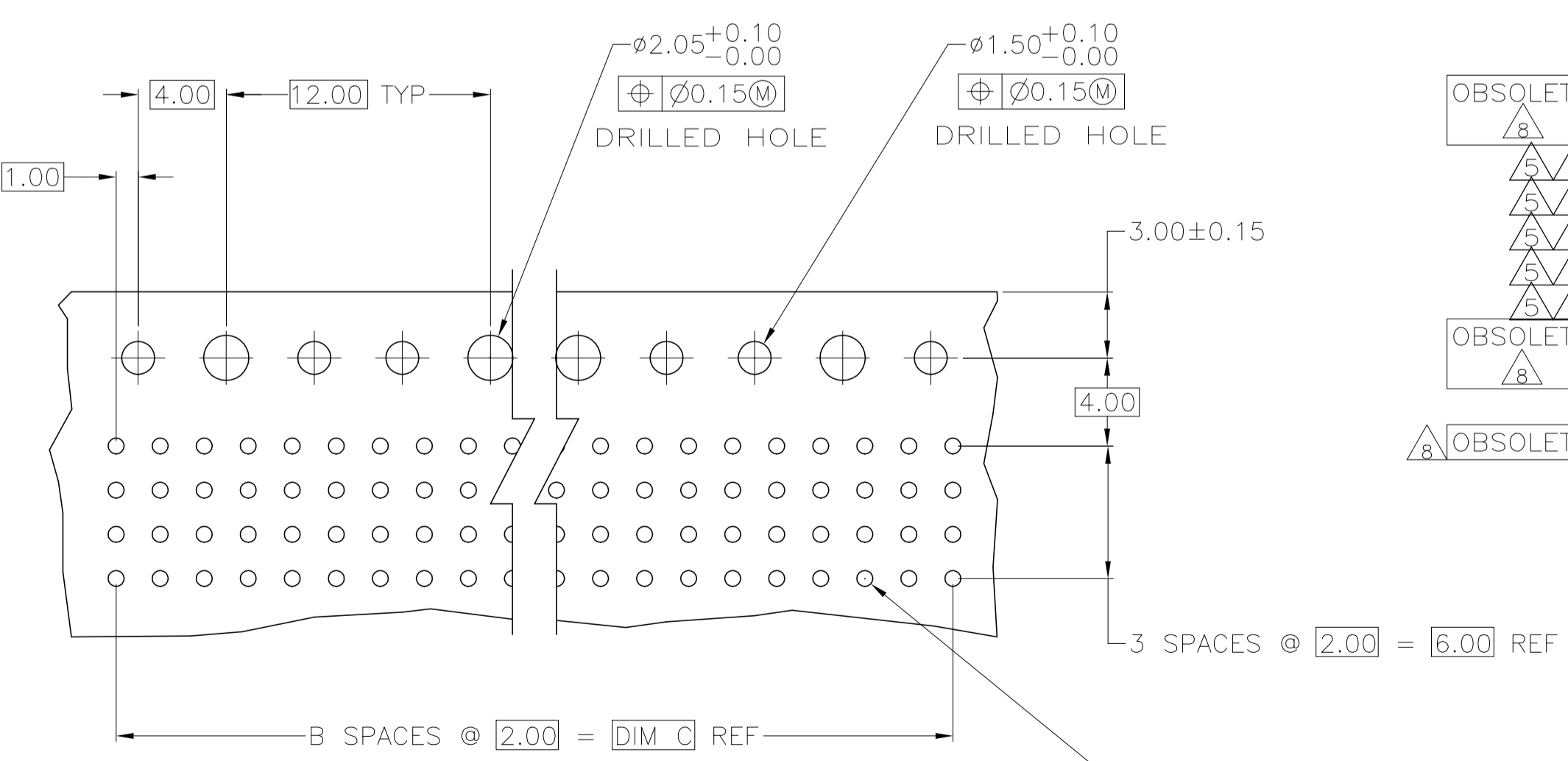
TYPICAL COLD HOLD
FOR ALL ASSEMBLIES



REFER TO DETAIL FOR COLD
HOLD CONFIGURATION



SEE DETAIL Z



RECOMMENDED CIRCUIT PATTERN
PER IPC-D300 TYPE II, CLASS C
(COMPONENT SIDE)

	NO	70	35	71.88	144	2-5536510-8
	NO	94	47	95.88	192	2-5536510-7
	NO	46	23	47.88	96	2-5536510-6
	NO	22	11	23.88	48	2-5536510-5
OBsolete	YES	94	47	95.88	192	2-5536510-4
OBsolete	YES	46	23	47.88	96	2-5536510-3
OBsolete	NO	34	17	35.88	72	1-5536510-5
OBsolete	NO	22	11	23.88	48	1-5536510-4
OBsolete	NO	94	47	95.88	192	1-5536510-3
OBsolete	NO	106	53	107.88	216	1-5536510-2
OBsolete	NO	70	35	71.88	144	1-5536510-1
OBsolete	NO	130	65	131.88	264	1-5536510-0
OBsolete	NO	106	53	107.88	216	5536510-9
OBsolete	NO	118	59	119.88	240	5536510-8
OBsolete	NO	82	41	83.88	168	5536510-7
OBsolete	NO	58	29	59.88	120	5536510-6
OBsolete	NO	70	35	71.88	144	5536510-5
OBsolete	NO	94	47	95.88	192	5536510-4
OBsolete	NO	46	23	47.88	96	5536510-3
OBsolete	NO	22	11	23.88	48	5536510-2
OBsolete	YES	10	5	11.88	24	5536510-1
POSITIONING PEGS	C	B	A	FINISH	NO OF POSN	PART NUMBER

THIS DRAWING IS A CONTROLLED DOCUMENT.

STE TE Connectivity

RECEPTACLE ASSEMBLY, SIGNAL MODULE, Z-PACK 2mm FB, 4 ROW, 3.53mm LEAD LENGTH

0.000000 A1 00779 C=5536510

SCALE 4:1 SHEET 1 OF 1 REV B