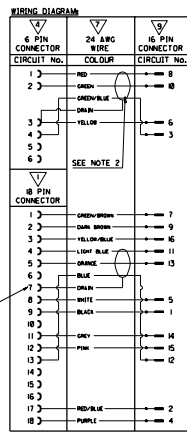


NO.	QUANTITY	SUPPLIER	DESCRIPTION	PART NO.	SEE NOTE
1	AMP	18 PIN HOUSING	1-9802-2		
1	AMP	SHIELD FOR 18 PIN HOUSING	1-9803-1	1	
17	AMP	PIN CONNECTION FOR CORD SECTION NO. 1, 63	1-9804-1		
1	AMP	6 PIN PLUG HOUSING	1-9804-3	3	
1	AMP	SHIELD FOR 6 PIN PLUG HOUSING	1-9804-5-1	3	
1	IDENTITY LABELS	BRASS ALUMINUM TYPING 24 AND 16 CORE CABLE	TOP-5-F 6-B LG 280		
1	NO PREFORMED SUPPLIER	24 AND 16 CORE CABLE	99836-8243		
2	NO PREFORMED SUPPLIER	HEAT SHRINK TUBING	98848-886		
1	MOUSE	16 PIN DOUBLE ROW SOCKET	54-8463-2		
46	MOUSE	CRIMP CONTACT FOR SOCKET	CF 8-2428-127		
2	MOLEX	FLEECY TAPE, REF YEA 5408	98048-8378		



CABLE SPECIFICATIONS

LEAD TYPE: PLAT BRASS CABLE YES OTHER

2. CABLE REQUIREMENTS: IN 3. CONDUCTIVE INSULATIONS: IN

CONDUCTOR NO. CORES

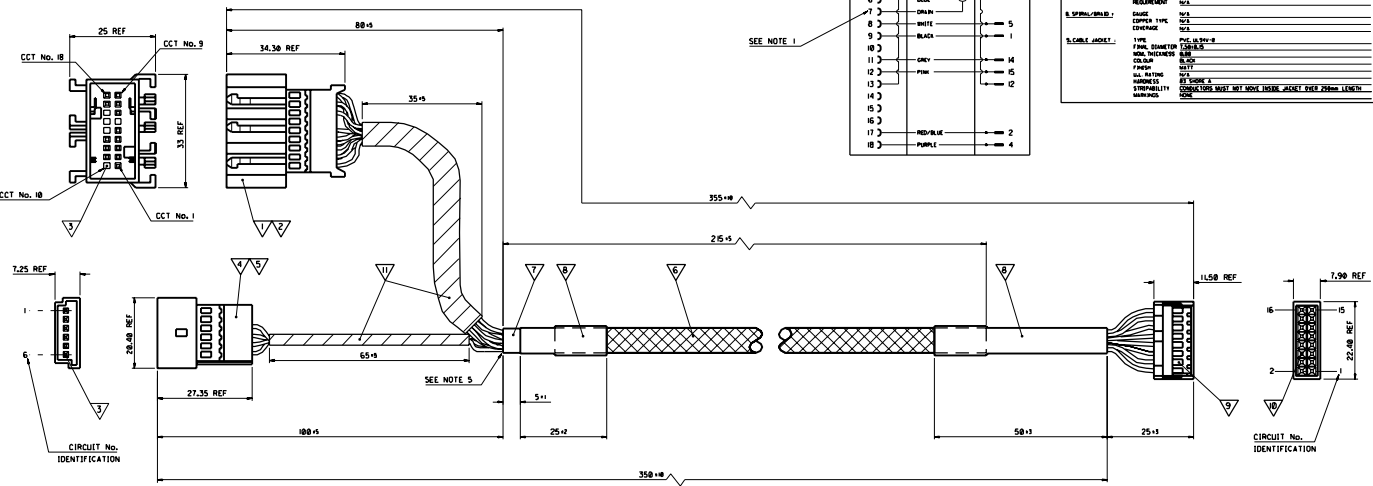
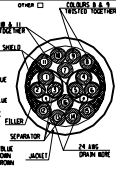
CONDUCTOR 1	1. W	2. W
CONDUCTOR 2	1. W	2. W
CONDUCTOR 3	1. W	2. W
CONDUCTOR 4	1. W	2. W
CONDUCTOR 5	1. W	2. W
CONDUCTOR 6	1. W	2. W
CONDUCTOR 7	1. W	2. W
CONDUCTOR 8	1. W	2. W
CONDUCTOR 9	1. W	2. W
CONDUCTOR 10	1. W	2. W
CONDUCTOR 11	1. W	2. W
CONDUCTOR 12	1. W	2. W
CONDUCTOR 13	1. W	2. W
CONDUCTOR 14	1. W	2. W
CONDUCTOR 15	1. W	2. W
CONDUCTOR 16	1. W	2. W
CONDUCTOR 17	1. W	2. W
CONDUCTOR 18	1. W	2. W

4. FILLER: 1. POLYESTER FIBER

5. SEPARATOR: 1. POLYESTER FIBER

6. SHIELD: 1. POLYESTER FIBER

7. JACKET: 1. POLYESTER FIBER



SHT. 1 OF 1		MRI- SD-92601-021			
MODIFICATION RECORD INDEX					
ECN	ISS.	DATE	INIT.	DATE	DESCRIPTION OF MOD.
E88280	A	98.04.12	DR	1	ORIGINAL RELEASE.
E88332	B	98.04.23	DR	1	CHANGE CONNECTOR & SHIELD INCREASE ITEM 3 TO 17, REMOVE CRIMP TERMINAL, MODIFY CABLE & PACKAGING.
E88581	C	98.06.29	DR	1	CHANGE CABLE JACKET FROM POLYURETHANE TO PVC LG 547-8.
-	D	99.03.01	DR	1	CHANGE CABLE STRANDING WAS 7/32 (STRANDING/ANG NOW 19/0.127 (STRANDING/ANG ADD 355 DIMENSION.
E98346	E	99.03.31	DR	1	REVISION D NOT RELEASED ADD NOTE 5, CHANGE DESCRIPTION OF ITEM 6 WAS 6mm NOW 5mm.
E2000-0178	F	99.09.24	PF	1	CABLE STRANDING CHANGED FROM 8 TO 41. CABLE SPEC. P/N CHANGED FROM 99836-8378 TO 99836-8243. TAPE ADDED TWO LOCATIONS, P/N 98848-8357.
E2000-0626	G	00.01.17	DR	1	ADD POLYESTER FILM BETWEEN CORES & DRAIN WIRE ON TRAILS INCREASE O.D. FROM 1.0 TO 1.5 (DW MIN. THICKNESS 0.55 TO 1.0 MIN. THICKNESS 0.80 CHANGE TAPE FROM -0367 TO 98048-8378

NOTES:

- DRAIN WIRE TO 18 PIN HOUSING TO BE COVERED WITH HEAT SHRINK INSULATION TUBING.
- DRAIN AND YELLOW WIRE TO BE CRIMPED TOGETHER.
- ASSEMBLES TESTED FOR SHORTS AND DISCONTINUITIES.
- PACKAGING: PARTS PACKED LOOSELY IN BOWLS.
- COVER RED, GREEN, GREEN/BLUE CONDUCTORS AND DRAIN WIRE WITH 8mm OF HEAT SHRINK.

2 : 1 ✕

D.RYAN 97/12/23

M.CARR 97/12/23

MWELHITE 97/12/23

CDC-IB CAR FAX CABLE

S9260119.DCN 92601-0019 SD-92601-021 1 OF 1

LEVEL CHART

1	17	33	49
2	18	34	50
3	19	35	51 LEVEL INDEX
4	20	36	52 RESERVED
5	21	37	53 RESERVED
6	22	38	54 Trademark Ballroom
7	23	39	55 DIMENSIONS
8	24	40	56 TABLES/CHARTS
9	25	41	57 REVISION TEXT & MRI
10	26	42	58 Notes/Part - English
11	27	43	59 Bill of Material
12	28	44	60 Notes/Part - German
13	29	45	61 RESERVED
14	30	46	62 Notes/Part - French
15	31	47	63 RESERVED
16	32	48	