

DRAWING MADE IN THIRD ANGLE PROJECTION
 THIS DRAWING IS UNPUBLISHED. RELEASED FOR PUBLICATION MARCH 17, 1983.
 © COPYRIGHT 1975 BY AMP INCORPORATED, HARRISBURG, PA. ALL INTERNATIONAL RIGHTS RESERVED. AMP PRODUCTS MAY BE COVERED BY U.S. AND FOREIGN PATENTS AND/OR PATENTS PENDING.

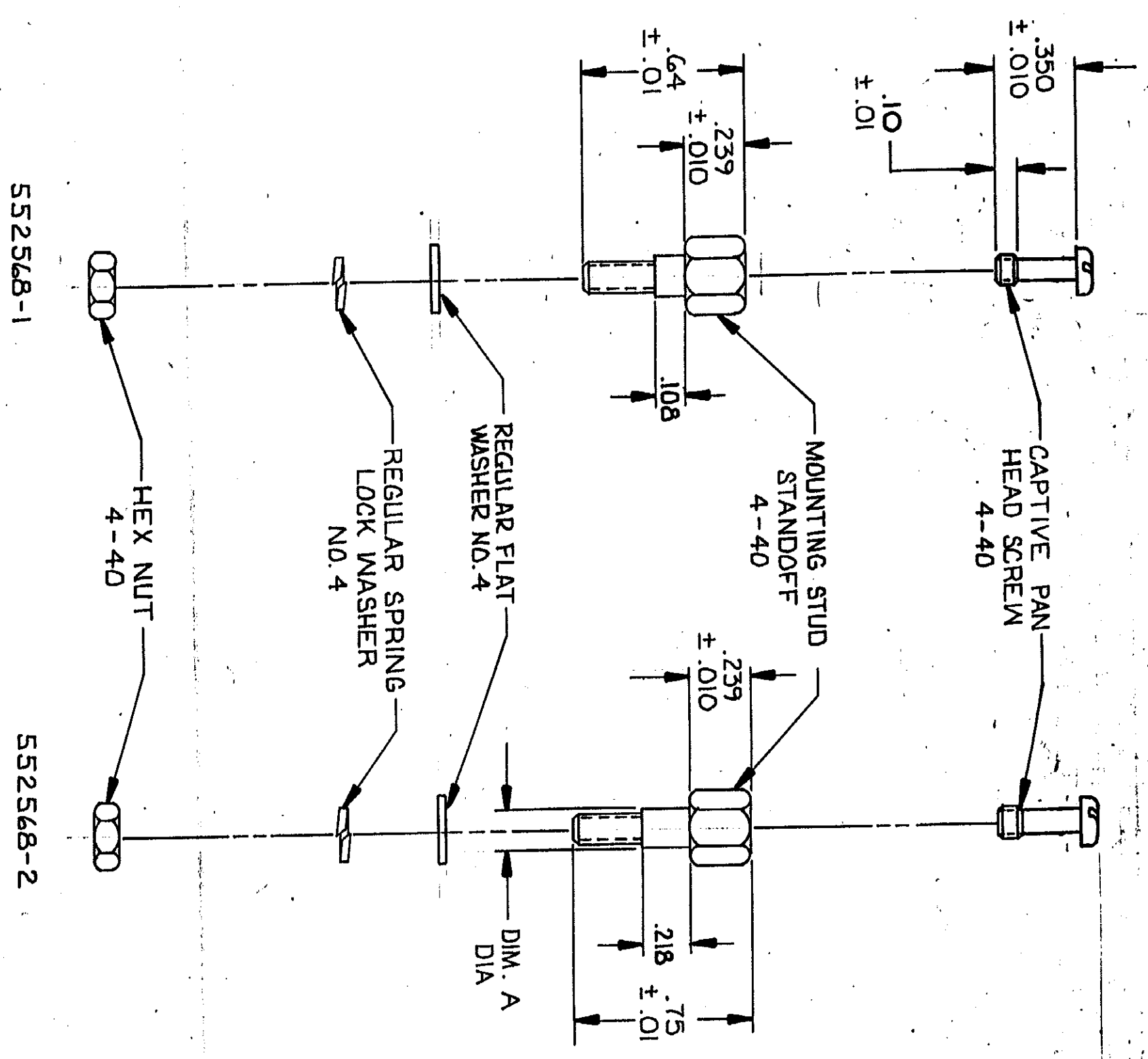
3

2

Loc DIST
AA 20

REV	DATE	APPROVED	DESCRIPTION
1	12/28/82	[Signature]	REV. ECN. AA-5071

- TWO (2) REQUIRED OF EACH COMPONENT PER KIT.
- MATERIAL: MOUNTING STUD & SLOTTED MOUNTING STUD - ZINC PLATE WITH YELLOW CHROMATE OVER STEEL. PAN HEAD SCREW, LOCKWASHER, WASHER & HEX NUT - ZINC PLATED STEEL.



UNLESS OTHERWISE SPECIFIED DIMENSIONS ARE IN INCHES.
 TOLERANCES ON:
 DECIMALS ±.005
 ANGLES

AMP INCORPORATED
 Harrisburg, Pa. 17105

CONTRACT NO. 3-17-83
 DR. LARRY K. SMITH
 CHK. M. J. [Signature] 4-7-83
 APD. [Signature] 6/1/83
 APD. [Signature] 6/1/83
 DSGN APD. [Signature] [Signature]
 OTHER APD. [Signature]

NAME: HARDWARE KIT, SCREW LOCK, PANEL MOUNT, CHAMP
 SIZE: C
 FSCM NO: 00779
 DRAWING NO: 552568
 SCALE: 2:1
 SHEET: 1 OF 1

DIM. A DIA	PART NO
.144-.138	552568-2
	552568-1

552568