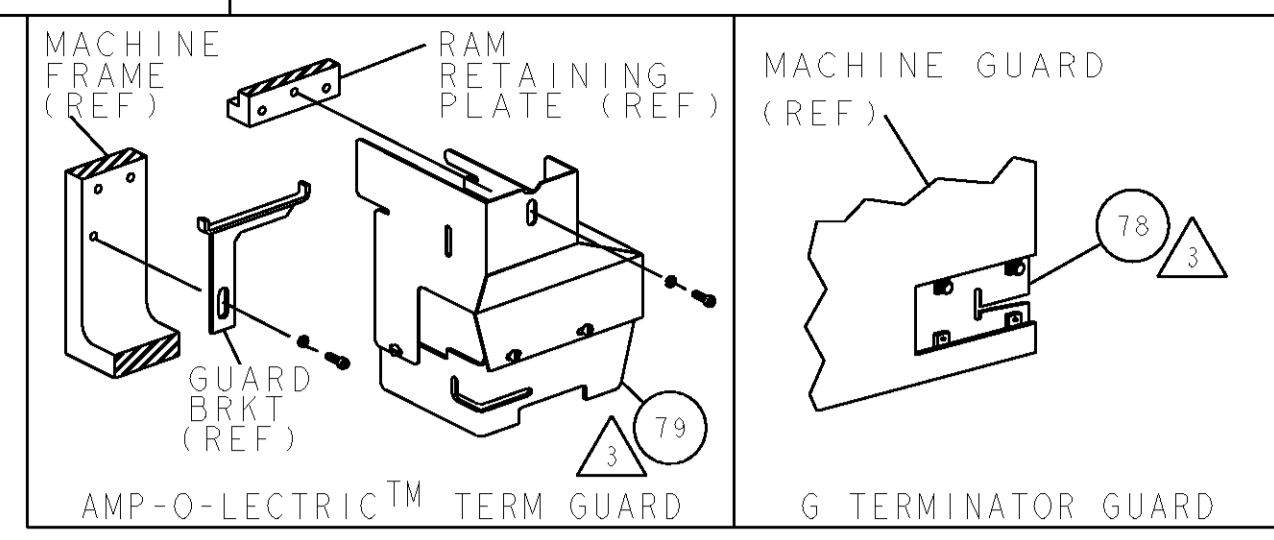


PART NUMBER	REV	FIRST USED	POWER UNIT	FEED TYPE
1855445-1	A	122500-1	LEADMAKER & BENCH MODEL G	POST FEED
1855445-2	A	565435-5	BENCH MODEL K	POST FEED
7-1855445-7	A	-	SPARE PARTS	-

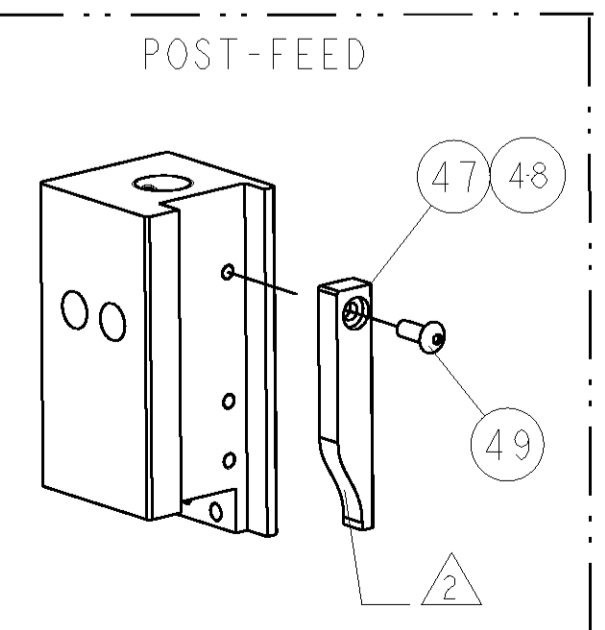
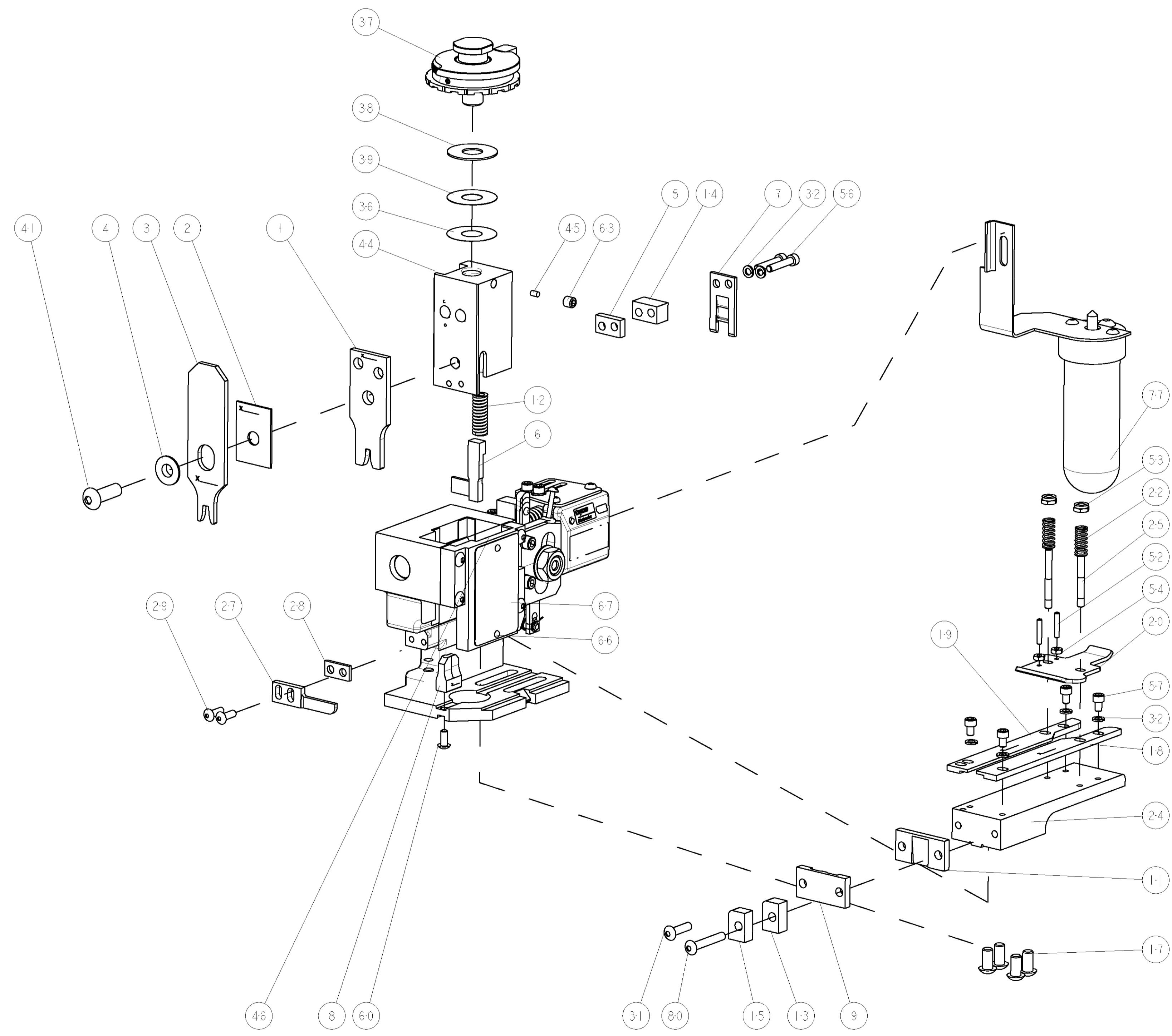


TERMINAL NAME: TERMINAL, RING					
TE PN	METALLON PN	METALLON TERMINAL - TE CRIMP SPECS		REF SETTING*	
1949824-1	8M-0537				
-	-	CRIMP HEIGHT	WIRE SIZE		
-	-	2.49±0.05mm [.098±.002]	14AWG or 2mm2	B4	
-	-	2.34±0.05mm [.092±.002]	16AWG or 1.25mm2	C6	
-	-	-	-	-	
-	-	-	-	-	
-	-	CRIMP	SIZE	TYPE	RANGE
-	-	WIRE	3.56mm [.140]	F	16-14 AWG
-	-	INSUL	4.70mm [.185]	F	∅2.35-3.94
WIRE STRIP LENGTH	TERM APPL SPEC	FEED	APPL INSTRUCTIONS	SET UP GAGE	
4.83mm-5.21mm	TYCO	1.291	408-8039	458638-1	

LOC	DIST	REVISIONS			
A	66	REV	DESCRIPTION	DATE	BY
		A	RELEASED	22DEC2008	BH

- △ RECOMMENDED SPARE PARTS
- △ GREASE LIGHTLY
- △ GUARD MUST BE IN PLACE WHEN OPERATING APPLICATOR IN A BENCH MACHINE

***WARNING:**
ON INSTALLATION, SET WIRE DISC TO LARGEST WIRE SIZE SETTING. USE OF SETTINGS BELOW MIN REQUIRED CRIMP HEIGHT SETTING WILL CAUSE DAMAGE TO CRIMP TOOLING.



QTY	REF	QTY	REF	QTY	REF	DESCRIPTION	ITEM NO
-	-	1	-	-	-	9-21002-0 SCR, BTN SKT HD CAP 10-32 X 1.25	80
-	REF	-	-	-	-	455745-1 GUARD WINDOW	79
-	-	1	REF	-	-	679532-1 INSERT, GUARD	78
-	-	1	-	-	-	465184-9 LUBRICATOR ASSY	77
-	-	1	-	-	-	217238-1 GENERAL INSTRUCTION PKG	72
-	-	1	-	-	-	4088039 EF APPL INST 408-8039	71
-	-	1	-	-	-	461264-5 PLATE, IDENTIFICATION	67
-	2	2	-	-	-	21017-2 SCREW, DRIVE	66
-	-	1	-	-	-	21009-2 SCR, SET, SELF LOCKING 1/4-20 X .250	63
-	-	1	-	-	-	22733-8 SCR, BHSC, SELF-LOCKING, 8-32 X .375	60
-	4	4	-	-	-	2-21000-5 SCR, SKT HD CAP 8-32 X .250	57
-	2	2	-	-	-	3-21000-0 SCR, SKT HD CAP 8-32 X .875	56
-	2	2	-	-	-	21018-4 NUT, HEX, REG 4-40	54
-	2	2	-	-	-	21022-2 NUT, LOCK, HEX, TORQUE, 8-32	53
-	2	2	-	-	-	2-21006-6 SCR, SET, CUP POINT 4-40 X .625	52
-	-	1	-	-	-	1-21002-7 SCR, BTN SKT CAP 6-32 X .375	49
-	-	1	-	-	-	690501-3 CAM, POST FEED, 1 1/8	48
-	-	1	-	-	-	690501-4 CAM, POST-FEED 1 5/8	47
-	-	1	-	-	-	1-458980-1 SUB ASSY, APPLICATOR FRAME	46
-	-	1	-	-	-	690191-1 PLUG, NYLON	45
-	-	1	-	-	-	1-455674-3 RAM	44
-	-	1	-	-	-	7-21002-9 SCR, BTN SKT HD CAP 5/16-24 X 1.00	41
-	-	1	-	-	-	690125-1 SHIM SUB-ASSY	39
-	-	1	-	-	-	469367-7 SHIM	38
-	-	1	-	-	-	879103-2 FINE ADJUST HEAD ASSEMBLY	37
-	-	1	-	-	-	469367-2 SHIM	36
-	6	6	-	-	-	21024-4 WASHER, SPRG LOCK, REG NO 8	32
-	-	1	-	-	-	2-21002-9 SCR, BTN SKT HD CAP 10-32 X .750	31
-	2	2	-	-	-	2-21002-2 SCR, BTN SKT HD CAP 8-32 X .500	29
-	-	1	-	-	-	1-690451-1 SPACER, STRIPPER	28
-	-	1	-	-	-	240639-1 STRIPPER (MACHINING)	27
-	2	2	-	-	-	22354-8 STUD, THREADED	25
-	-	1	-	-	-	455678-1 PLATE, STRIP GUIDE	24
-	2	2	-	-	-	4-22281-1 SPRING, DRAG	22
-	-	1	-	-	-	454177-1 DRAG	20
-	-	1	-	-	-	2-458030-2 STRIP GUIDE, REAR	19
-	-	1	-	-	-	2-458031-2 STRIP GUIDE, FRONT	18
-	4	4	-	-	-	3-21002-3 SCR, BTN SKT HD CAP 1/4-20 X .500	17
-	-	1	-	-	-	1-690481-2 SPACER, HOLD DOWN	15
-	-	1	-	-	-	8-240641-3 SPACER	14
-	-	1	-	-	-	690481-1 SPACER, HOLD DOWN	13
-	-	1	-	-	-	23846-1 SPRING, DIE	12
-	-	1	-	-	-	240644-1 PLATE, REAR SHEAR	11
-	-	-	-	-	-	-	10
-	-	1	-	-	-	690482-4 PLATE, FRONT SHEAR	9
-	-	1	-	-	-	3-1633249-2 ANVIL, COMBINATION	8
-	-	1	-	-	-	690474-4 BLADE, SLUG	7
-	-	1	-	-	-	455892-3 HOLD DOWN, TERMINAL	6
-	-	1	-	-	-	240641-3 SPACER	5
-	-	1	-	-	-	238009-1 BLOCK, FL CRIMPER SPACER	4
-	-	1	-	-	-	2-1633471-4 CRIMPER, INSULATION F	3
-	-	1	-	-	-	1-455888-0 SPACER, CRIMPER	2
-	-	1	-	-	-	456411-9 CRIMPER, WIRE PREMIUM	1

DIMENSIONS:		TOLERANCES UNLESS OTHERWISE SPECIFIED:		MATERIAL:		FINISH:	
INCHES	0 PLC ±.01	1 PLC ±.01	2 PLC ±.01	3 PLC ±.001	4 PLC ±.0001	ANGLES ±.001	

DATE	BY	CHKD	APP'D	NAME	PRODUCT SPEC	APPLICATION SPEC	WEIGHT	CUSTOMER DRAWING
22NOV2008	B. HIGMAN	T. ELBIN	N. DEMING					

SCALE	SHEET	OF	REV
3:5	1	1	A