

| PART NUMBER | VERSION            | PRODUCT SPECIFICATION | PLATING |
|-------------|--------------------|-----------------------|---------|
| 95040-2881  | STANDARD           | PS 95040              | 2       |
| 95040-2889  | HIGH TEMPERATURE   | PS-95040-688          | 2       |
| 95040-4881  | HIGH MATING CYCLES | PS-95040-001          | 7       |

**NOTES:**

**1- MATERIAL :**

HOUSING : POLYAMIDE 4/6 GLASS FILLED UL 94V0. COLOUR: BLACK  
89992-0008

**TERMINAL : PHOSPHOR BRONZE PLATED WITH :**

PLATING 2 : 0.00127/.000050 MIN GOLD IN CONTACT AREA,  
0.00190/.000075 MIN TIN IN TAIL AREA,  
BOTH OVER 0.00127/.000050 MIN NICKEL OVERALL

PLATING 7 : POST PLATE 0.00005/.000002 MIN GOLD OVER 0.00076/.000030 MIN  
PALLADIUM NICKEL IN CONTACT AREA 0.00190/.000075 MIN  
TIN IN TAIL AREA BOTH OVER 0.00127/.000050 MIN NICKEL OVERALL.

SHIELD : BRASS PLATED WITH 0.0020/.000078 MIN. TIN

2- P.C. BOARD THICKNESS : 1.57/.062 ±0.15/.006

3- JACK FOR MATING WITH F.C.C. 68 PLUGS  
95043 MOLEX SERIES.

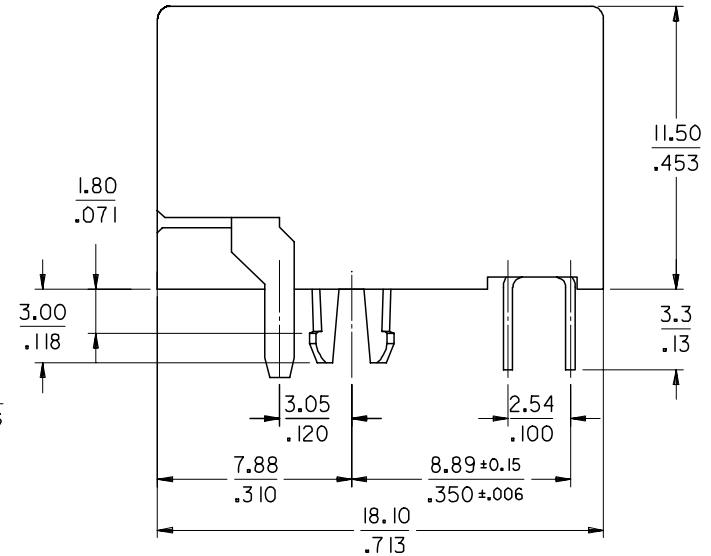
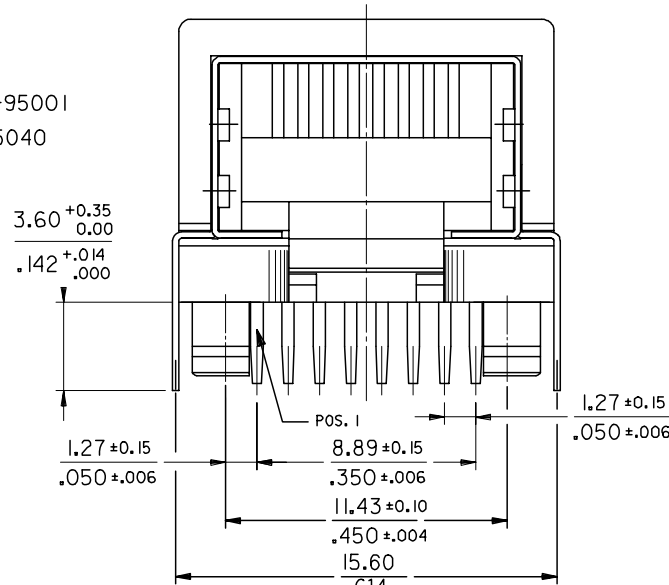
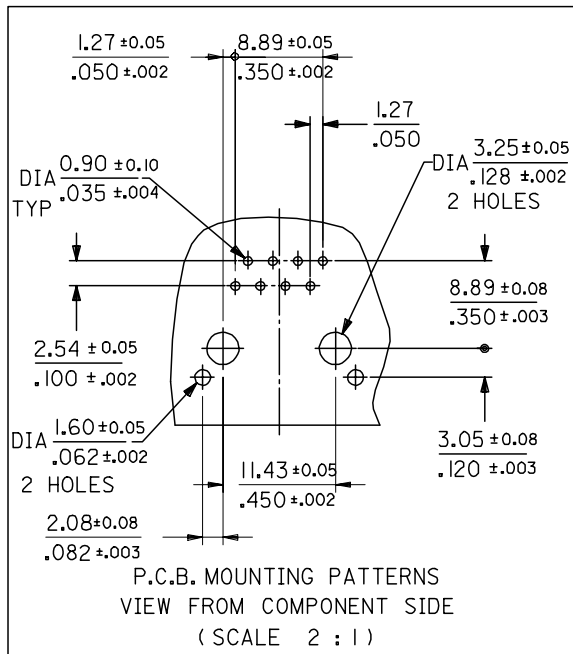
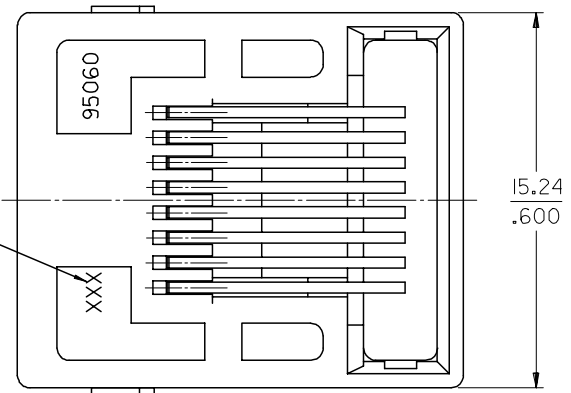
4- PRODUCT SPECIFICATION: SEE CHART

5- APPLICATION SPECIFICATION: MOLEX AS-95001

6- PACKAGING SPECIFICATION: MOLEX PK-95040

7- LOGO MAY BE MXF, MG OR MXI

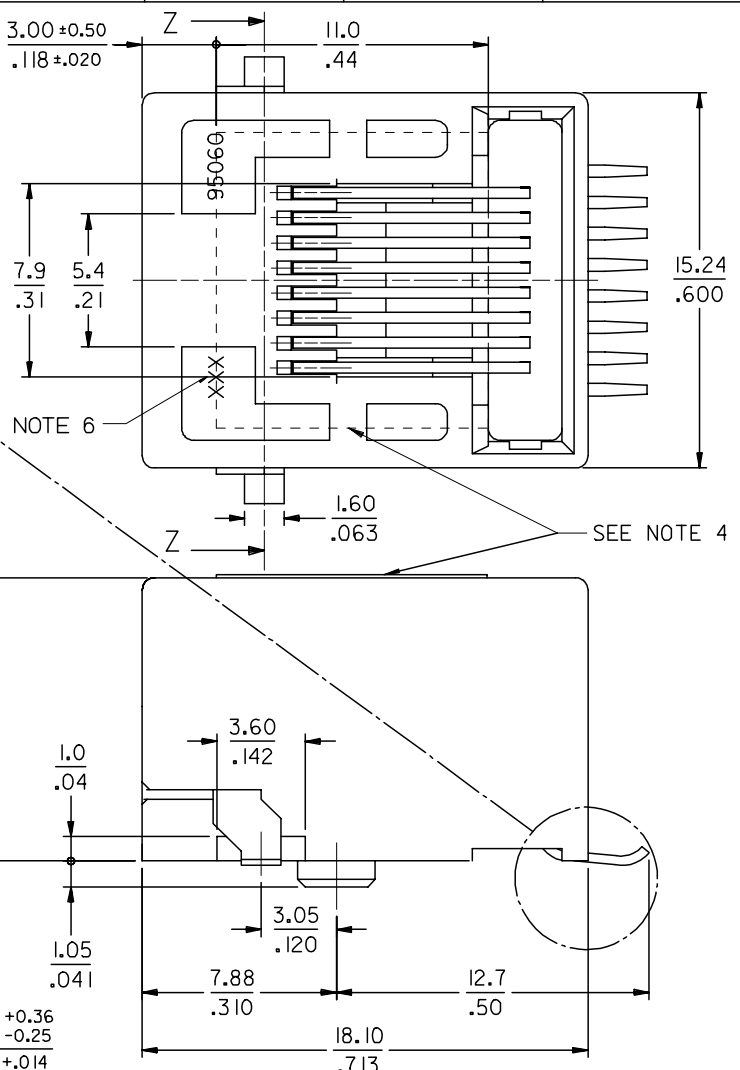
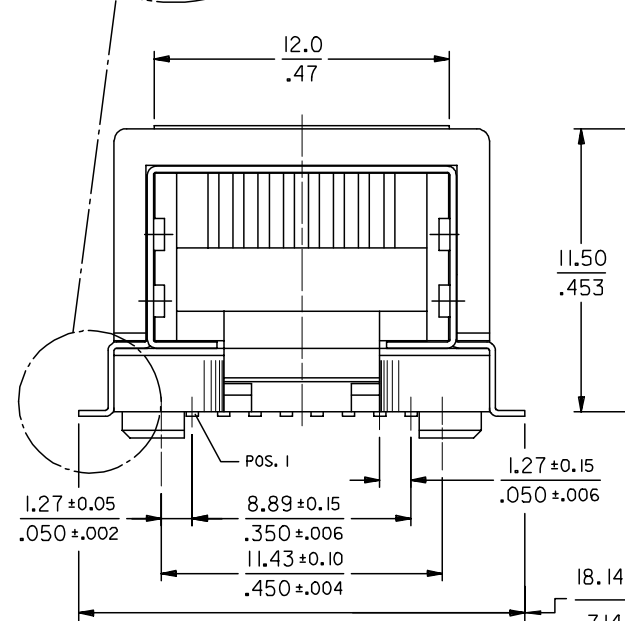
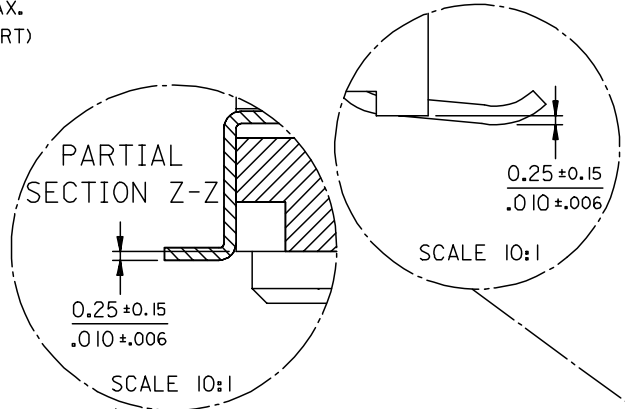
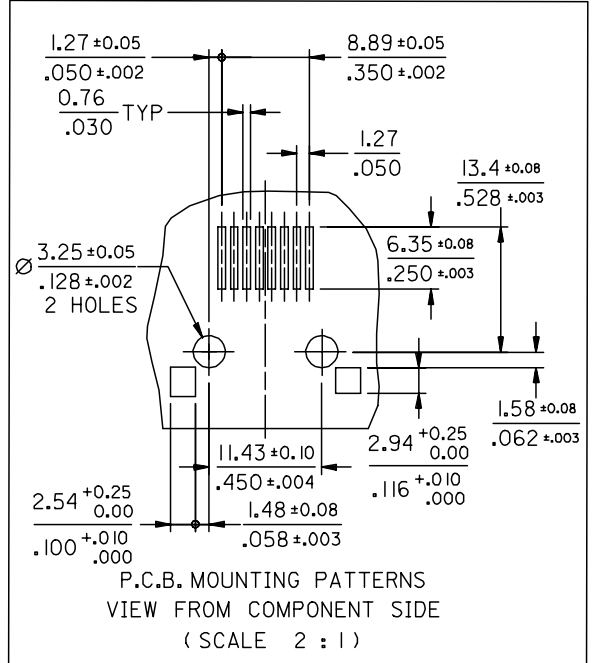
SEE NOTE 7



| MODIFIED SIDE WALLS<br>EC NO: E2007-0681<br>DRWN:DBRYNES<br>CHKD:<br>APPR:EDMAHONY<br>2007/02/05<br>2007/02/05<br>2007/02/08 | QUALITY SYMBOLS<br>▽=0<br>▽=0 | GENERAL TOLERANCES (UNLESS SPECIFIED)<br><table border="1"> <thead> <tr> <th></th> <th>mm</th> <th>INCH</th> </tr> </thead> <tbody> <tr> <td>4 PLACES</td> <td>± ---</td> <td>± ---</td> </tr> <tr> <td>3 PLACES</td> <td>± ---</td> <td>± .01</td> </tr> <tr> <td>2 PLACES</td> <td>± 0.25</td> <td>± .014</td> </tr> <tr> <td>1 PLACE</td> <td>± 0.35</td> <td>± ---</td> </tr> </tbody> </table> |                  | mm   | INCH                | 4 PLACES  | ± --- | ± --- | 3 PLACES | ± --- | ± .01 | 2 PLACES | ± 0.25 | ± .014 | 1 PLACE | ± 0.35 | ± --- | DIMENSION STYLE<br>MM/IN | SCALE<br>5:1 | DESIGN UNITS<br>METRIC | THIRD ANGLE PROJECTION |
|--|-------------------------------|---|------------------|--|---------------------|---|-------|-------|----------|-------|-------|----------|--------|--------|---------|--------|-------|--------------------------|--------------|------------------------|------------------------|
|  |                               | mm  | INCH             |  |                     |   |       |       |          |       |       |          |        |        |         |        |       |                          |              |                        |                        |
|  | 4 PLACES                      | ± ---   | ± ---            |  |                     |   |       |       |          |       |       |          |        |        |         |        |       |                          |              |                        |                        |
|  | 3 PLACES                      | ± ---   | ± .01            |  |                     |   |       |       |          |       |       |          |        |        |         |        |       |                          |              |                        |                        |
| 2 PLACES   | ± 0.25                        | ± .014  |                  |  |                     |   |       |       |          |       |       |          |        |        |         |        |       |                          |              |                        |                        |
| 1 PLACE  | ± 0.35                        | ± ---   |                  |  |                     |   |       |       |          |       |       |          |        |        |         |        |       |                          |              |                        |                        |
| DESCRIPTION<br>RIGHT ANGLE LOW PROFILE SHIELDED PC JACK (THROUGH HOLE VERSION)   | DRAWN BY<br>CB<br>89/04/12    | CHECKED BY<br>TB<br>89/04/12  | DATE<br>89/04/12 | TITLE<br>RIGHT ANGLE LOW PROFILE SHIELDED PC JACK (THROUGH HOLE VERSION) | MOLEX INCORPORATED  | SHEET NO.<br>1 OF 3   |       |       |          |       |       |          |        |        |         |        |       |                          |              |                        |                        |
| DRAFT WHERE APPLICABLE MUST REMAIN WITHIN DIMENSIONS   | MATERIAL NO.<br>SEE CHART     | DOCUMENT NO.<br>SDA-95040   | DATE<br>89/04/12 | MOLEX INCORPORATED   | SHEET NO.<br>1 OF 3 | THIS DRAWING CONTAINS INFORMATION THAT IS PROPRIETARY TO MOLEX INCORPORATED AND SHOULD NOT BE USED WITHOUT WRITTEN PERMISSION |       |       |          |       |       |          |        |        |         |        |       |                          |              |                        |                        |
| REV<br>Y   | DESCRIPTION                   | MATERIAL NO.<br>SEE CHART   | DATE<br>89/04/12 | MOLEX INCORPORATED   | SHEET NO.<br>1 OF 3 | THIS DRAWING CONTAINS INFORMATION THAT IS PROPRIETARY TO MOLEX INCORPORATED AND SHOULD NOT BE USED WITHOUT WRITTEN PERMISSION |       |       |          |       |       |          |        |        |         |        |       |                          |              |                        |                        |

**NOTES:**

- 1- COPLANARITY OF LEADS AND SHIELD TABS: 0.10/.004 MAX.
- 2- PACKAGING SPECIFICATION : BLISTER ON REEL (SEE CHART)
- 3- PRODUCT SPECIFICATION : MOLEX PS-95040-688
- 4- KAPTON ADHESIVE FOIL: 0.125/.005 THICK.
- 5- JACK FOR MATING WITH F.C.C. 68 PLUGS 95043 MOLEX SERIES
- 6- MANUFACTURING I.D. CAN BE EITHER MXF, MG OR MXI.



| PACKAGING   |           |                  |         |
|-------------|-----------|------------------|---------|
| PART NUMBER | REEL SIZE | SPECIFICATION    | PLATING |
| 95040-6886  | 330/13    | PK-85502 SHEET 1 | 2       |

**MATERIAL:**  
HOUSING: POLYAMIDE 4/6 GLASS FILLED UL 94V0. COLOR: BLACK.

**TERMINAL:** PHOSPHOR BRONZE PLATED WITH:  
PLATING 2: 0.00127/.000050 MIN GOLD IN CONTACT AREA,  
0.00190/.000075 MIN TIN IN TAIL AREA,  
BOTH OVER 0.00127/.000050 MIN NICKEL OVERALL.

**SHIELD:** BRASS PLATED WITH 0.0020/.000078 MIN TIN.

MODIFIED SIDE WALLS  
EC NO: E2007-0681  
DRWN:DBYRNES  
CHKD:  
APPR:EDMANNY  
2007/02/05  
2007/02/05  
2007/02/08

QUALITY SYMBOLS  
▽=0  
▽=0

| GENERAL TOLERANCES (UNLESS SPECIFIED) |        |
|---------------------------------------|--------|
| mm                                    | INCH   |
| 4 PLACES ± ---                        | ± ---  |
| 3 PLACES ± ---                        | ± .01  |
| 2 PLACES ± 0.25                       | ± .014 |
| 1 PLACE ± 0.35                        | ± ---  |
| ANGULAR ± 1/2°                        |        |

| DIMENSION STYLE |              |
|-----------------|--------------|
| MM/IN           | DATE         |
| DRAWN BY        | 00/12/05     |
| CHECKED BY      | DATE         |
| FB              | 00/12/05     |
| APPROVED BY     | DATE         |
| FB              | 00/12/05     |
| MATERIAL NO.    | DOCUMENT NO. |
| SEE CHART       | SDA-95040    |

| SCALE   | DESIGN UNITS | THIRD ANGLE PROJECTION |
|---|--------------|------------------------|
| 5:1   | METRIC       | ☉                      |
| RIGHT ANGLE LOW PROFILE SHIELDED PC JACK (SURFACE MOUNT VERSION)  |              |                        |
| MOLEX INCORPORATED  |              |                        |
| SHEET NO.   |              | 2 OF 3                 |
| THIS DRAWING CONTAINS INFORMATION THAT IS PROPRIETARY TO MOLEX INCORPORATED AND SHOULD NOT BE USED WITHOUT WRITTEN PERMISSION |              |                        |