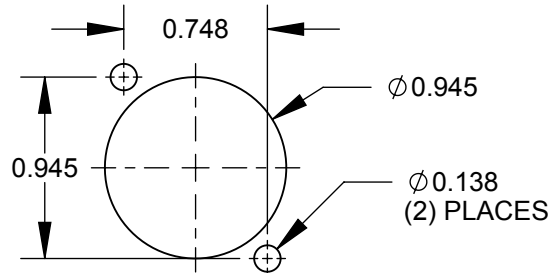


M3 x 0.5
METRIC THREAD
(2) PLACES

EHBNC2M3 & EHBNC2BM3



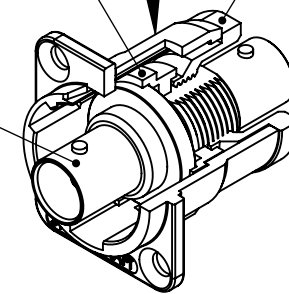
**RECOMMENDED
PANEL CUT-OUT**

STANDARD E SERIES HOUSING
SEE TABLE FOR FINISH

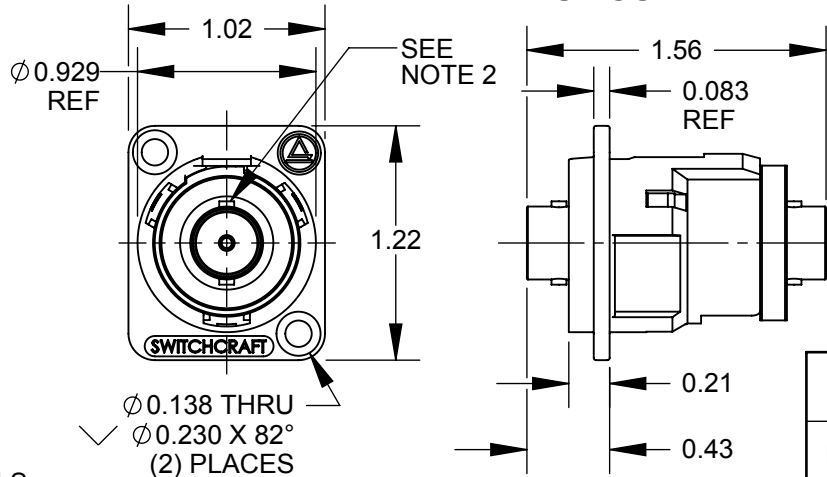
HOUSING INSERT

RETAINING NUT

BNC-TO-BNC
JACK



EHBNC2 SHOWN



NOTES:

1. MATERIALS:

HOUSING - ZINC ALLOY
HOUSING INSERT - THERMOPLASTIC, BLACK
RETAINING NUT - THERMOPLASTIC, BLACK
BNC JACK - COPPER ALLOY, NICKEL PLATED

E 2. ORIENTATION OF BAYONET POSTS $\pm 10^\circ$ FROM VERTICAL.

3. THESE PRODUCTS ARE RoHS COMPLIANT.

PART NUMBER	HOUSING FINISH	MOUNTING HOLES
EHBNC2	NICKEL PLATED	COUNTERSINK FOR #4 FLAT HEAD SCREWS
EHBNC2B	BLACK CHROME	COUNTERSINK FOR #4 FLAT HEAD SCREWS
EHBNC2M3	NICKEL PLATED	M3 x 0.5 THREAD
EHBNC2BM3	BLACK CHROME	M3 x 0.5 THREAD

CUSTOMER DRAWING

					THIS DRAWING DESCRIBES A DESIGN CONSIDERED PROPRIETARY IN NATURE, DEVELOPED AND MANUFACTURED BY SWITCHCRAFT INC. AND IS RELEASED ON A CONFIDENTIAL BASIS FOR IDENTIFICATION PURPOSES ONLY.					
					SIZE	WIDTH	MULT	LBS/M	TEMPER	
					FINISH			MATERIAL		
					SPEC No.			SPEC No.		
					FIRST USED ON		SCALE 1:1			
E	27546	7-24-15	TO	TJK	DATE DRAWN	BY	CHKD	APVD	Switchcraft [®]	
D	27482	04/20/15	PC	TJK	5/5/03	MA	MA	MA		
C	26415	7/17/09	RS	TJK			10/31/03	10/31/03		
REV	ECO NUMBER	DATE	BY	APVD	NAME E SERIES CONNECTOR, BNC FEEDTHROUGH, RoHS				PART No. EHBNC2 SERIES	REV E
REVISIONS					DO NOT SCALE DRAWING					

