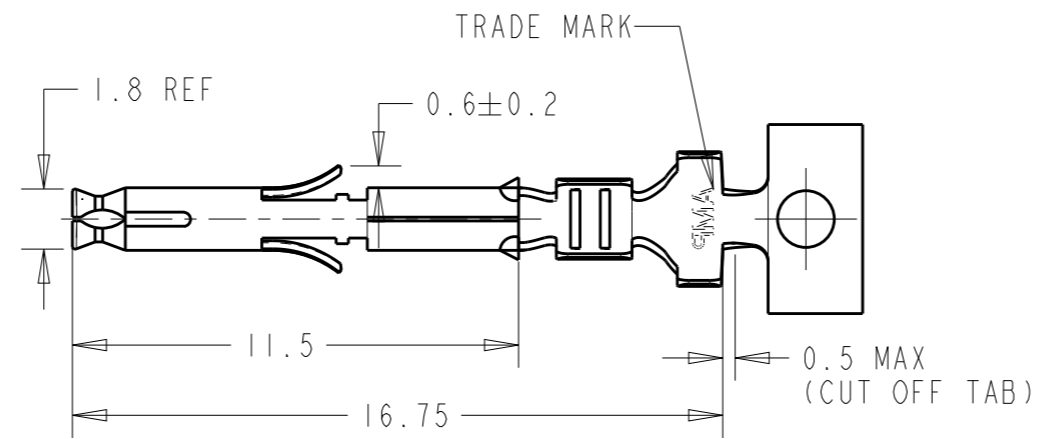
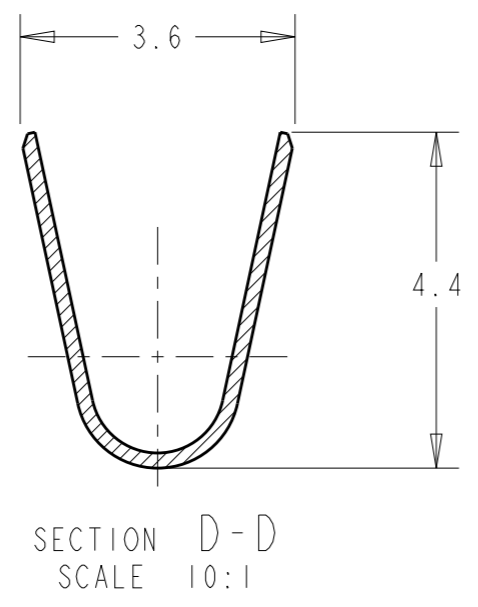
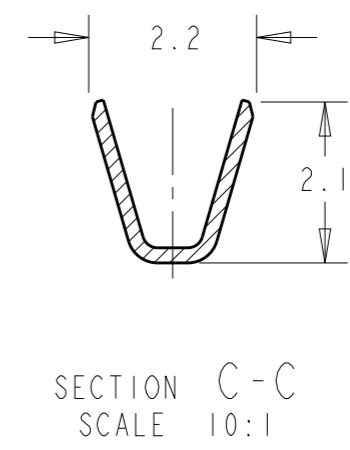
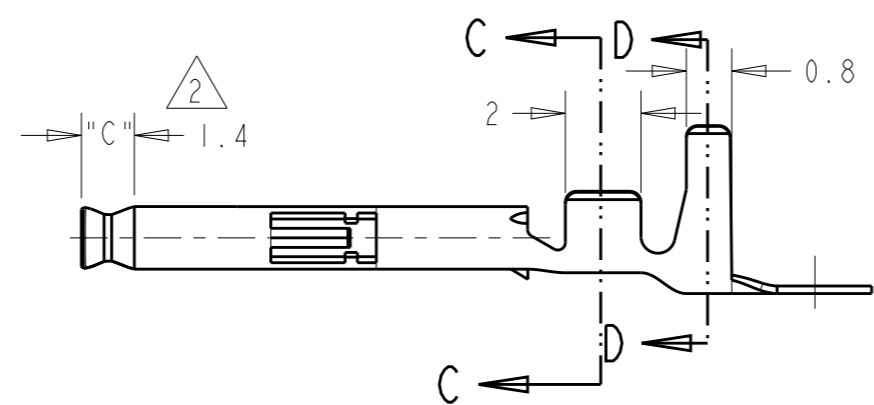
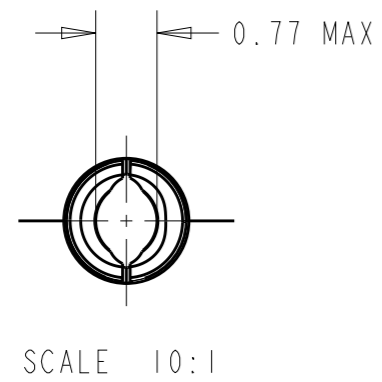


P	LTR	DESCRIPTION	DATE	DWN	APVD
	J2	REVISED PER ECR-20-005023	24APR2020	BDA	SW
	J3	REVISED PER ECR-20-100305	13AUG2020	PJ	VS
	K	REVISED PER ECR-20-100490	30SEP2020	PC	SW



- 1 APPLICABLE HOUSING : CAP AND PLUG
- 2 SELECTIVE GOLD PLATED AREA "C"
0.0004mm MIN THICK OVER Ni PLATE ON INSIDE SURFACE.
- 4 MATING PART NUMBERS:
170359, 170360, 170363, 170364.
- 5 WIRE RANGE: 18-22 AWG, 2X 22AWG.
- 6 INSULATION DIA: 1.5-2.4mm,
3.4mm MAX FOR TWO WIRE CRIMP.



LOOSE PIECE PART NUMBER	FINISH	MATERIAL	PART NUMBER
170366-4	PRE-TIN	PHOZ.BRONZ	170362-4
170366-3	2	BRASS	170362-3
170366-1	PRE-TIN	BRASS	170362-1

THIS DRAWING IS A CONTROLLED DOCUMENT.	
DIMENSIONS: mm	TOLERANCES UNLESS OTHERWISE SPECIFIED:
0 PLC ±0.3	1 PLC ±0.3
2 PLC ±0.3	3 PLC ±
4 PLC ±	ANGLES ±3°
MATERIAL SEE TABLE	FINISH SEE TABLE

DWN N. YAMASAKI 28FEB1994
CHK M. SHINDO 28FEB1994
APVD Y. KASHIWA 4MAR1994
PRODUCT SPEC 108-5138
APPLICATION SPEC 114-5050
WEIGHT -
CUSTOMER DRAWING

TE TE Connectivity			
NAME MINI UNIVERSAL M-N-L SOCKET CONTACT			
SIZE A3	CAGE CODE 00779	DRAWING NO C-170362	RESTRICTED TO -
SCALE 5:1		SHEET 1 OF 1	REV K