



# LTM4681 PolyPhase Single Output Step-Down $\mu$ Module Regulator with Digital PSM: 4 $\times$ LTM4681 at 480A

## DESCRIPTION

Demonstration circuit DC3082A-C features the [LTM<sup>®</sup>4681](#): the wide input and output voltage range, high efficiency and power density, high current PolyPhase<sup>®</sup> single output DC/DC step-down  $\mu$ Module<sup>®</sup> regulator with digital power system management. DC3082A-C is configured as 16-phase single output using 4  $\times$  LTM4681. The factory default input voltage is 12V typical, output voltage is 1V at 480A typical or 500A peak with recommended 400LFM forced airflow. The demo board output voltages can be adjusted from 0.6V to 1V. Programming the output voltages to any value that is greater than 1V, requires derating output current based on thermal derating curves provided in the data sheet of the LTM4681. Heat sink or other appropriate electronic cooling systems can also be used in conjunction with forced airflow to further optimize the output power when the output is on and loaded with maximum output current. The factory default switching frequency is preset at 350kHz typical. DC3082A-C comes with PMBus interface and digital power system management functions. An onboard 12-pin connector is available for users to connect the dongle DC1613A to the demo board, provides an easy way to communicate and program the part using LTpowerPlay<sup>®</sup> software development tool. LTpowerPlay

software and I<sup>2</sup>C/PMBus/SMBus dongle DC1613A allows users to monitor real time telemetry of input and output voltages, input and output current, switching frequency, internal IC die temperatures, power stage component temperatures and fault logs. Programmable parameters include device address, output voltages, control loop compensation, switching frequency, phase interleaving, DCM or CCM mode of operation, digital soft-start, sequencing and time based shutdown, fault responses to input and output overvoltage, output overcurrent, IC die and power component overtemperature.

The LTM4681 is available in a thermally enhanced, low profile 330-Lead (15mm  $\times$  22mm  $\times$  8.17mm) BGA package. It is recommended to read the data sheet and this demo manual of LTM4681 prior to use or making any hardware changes to DC3082A-C.

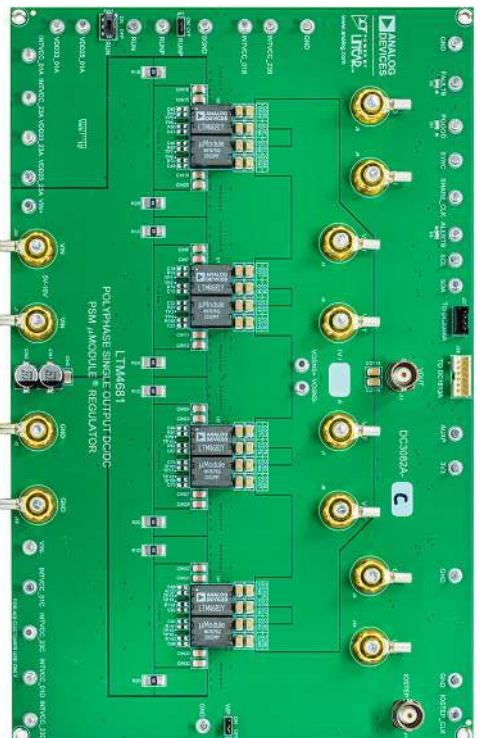
LTpowerPlay software can be downloaded [here](#).

USB to PMBus Controller Dongle DC1613A for use with LTpowerPlay is available [here](#).

[Design files for this circuit board are available.](#)

All registered trademarks and trademarks are the property of their respective owners.

## BOARD PHOTO



# DEMO MANUAL

## DC3082A-C

### PERFORMANCE SUMMARY

Specifications are at  $T_A = 25^\circ\text{C}$

#### DC3082A-C: 16-Phase Single Output

PARAMETER	CONDITIONS	MIN	TYP	MAX	UNIT
Input Voltage $V_{IN}$ Range		4.5	12	16	V
Demo Board Default Output Voltage $V_{OUT}$	$f_{sw} = 350\text{kHz}$ , $V_{IN} = 12\text{V}$ , $I_{OUT} = 480\text{A}$		1		V
Switching Frequency $f_{sw}$	Factory Default Switching Frequency		350		KHz
Maximum Continuous Output Current $I_{OUT}$	$V_{IN} = 12\text{V}$ , $V_{OUT} = 0.6\text{V to } 1\text{V}$ , $f_{sw} = 350\text{kHz}$ , $V_{BIAS} = 5.5\text{V}$ (RUNP: ON), Forced Airflow = 400LFM		480	500	A
Efficiency	$f_{sw} = 350\text{kHz}$ , $V_{IN} = 12\text{V}$ , $V_{OUT} = 1\text{V}$ , $I_{OUT} = 480\text{A}$ , $V_{BIAS} = 5.5\text{V}$ (RUNP: ON), No Forced Airflow, No Heat Sink		89.2*		%

\*Fast pulse current used for efficiency test.

### QUICK START PROCEDURE

Demonstration circuit DC3082A-C is easy to set up to evaluate the performance of the LTM4681. Please refer to Figure 1 for proper measurement equipment setup and follow the test procedures below.

1. With power off, connect the input power supply between  $V_{IN}$  (J1) and GND (J2). Set the input voltage supply to 0V.
2. Connect the load between  $V_{OUT}$  (J3, J5, J6, J7) and GND (J4, J8, J9, J10). Preset the load to 0A.
3. Connect the DMM between the input test points:  $V_{IN}^+$  (E1) and  $V_{IN}^-$  (E2) to monitor the input voltage. Connect a DMM between  $V_{OSNS}^+$  (E3) and

4. Prior power up the DC3082A-C, check the default position of the jumpers and switches (refer to Table 1).
- $V_{OSNS}^-$  (E4) to monitor the DC output voltage.  $V_{OSNS}^+$  and  $V_{OSNS}^-$  test points are Kelvin sensed directly across C0113 to provide accurate measurement of output voltage. Do not apply load current or connect the scope probe ground leads to any of the above test points to avoid damage to the regulator.

**Table 1. Demo Board Default Switches and Jumpers Position**

SWITCH/JUMPER NAME	SW1	JP1	JP2
Description	RUN	RUNP	WP
Position	OFF	ON	OFF

## QUICK START PROCEDURE

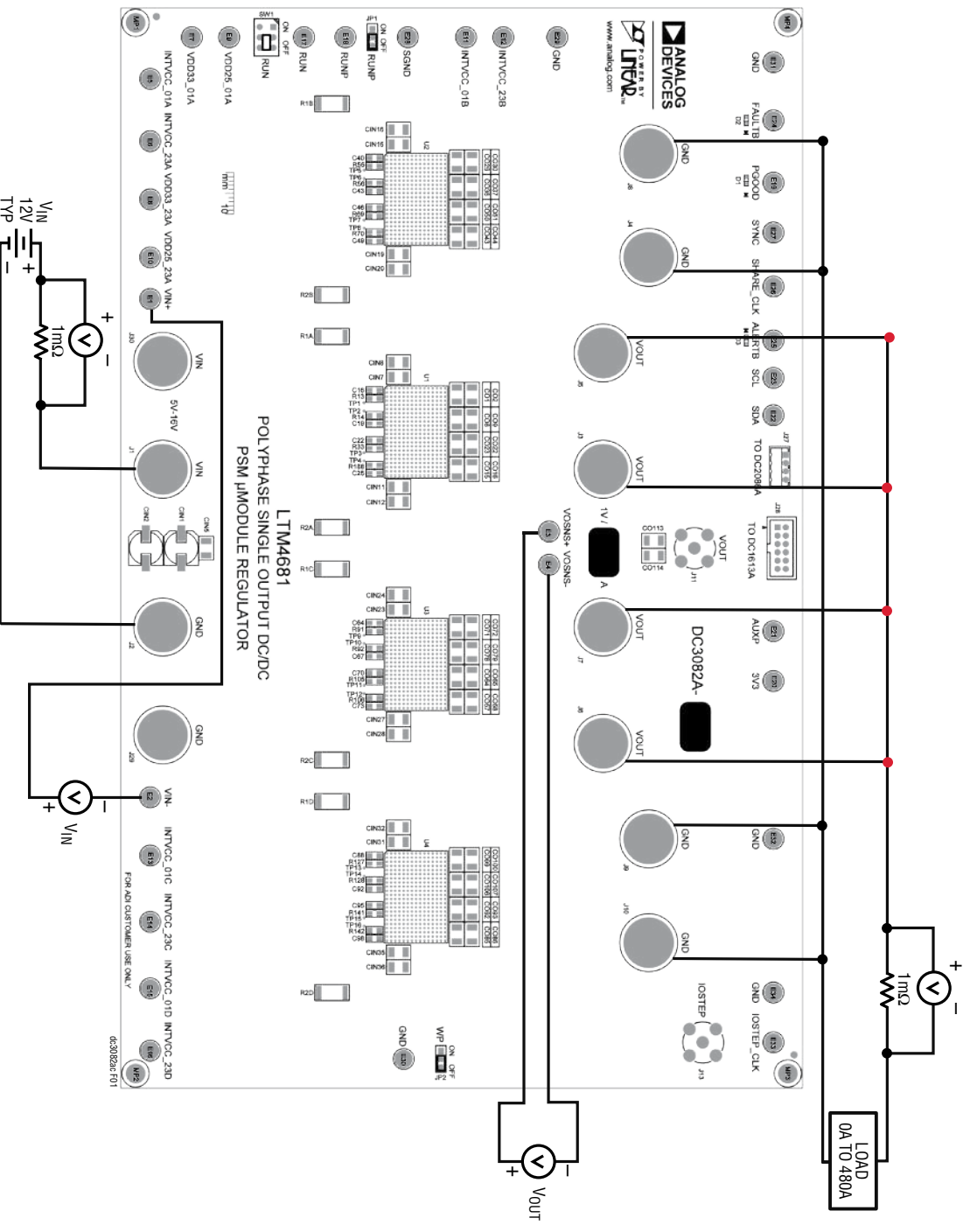


Figure 1. Proper Measurement Equipment Setup for DC3082A-C

### QUICK START PROCEDURE

5. Turn on the power supply at the input. Slowly increasing the input voltage from 0V to 12V typical. Measure and make sure the input supply voltage is 12V and flip SW1 (RUN) to the “ON” position. The output voltage should be  $1.0V \pm 0.5\%$  typical.
6. Use a fan (for example: AC Axial Fan, Model: AA1281LS-AT, ADDA CORP, AC 110–120V 50/60Hz) to provide direct forced airflow to the demo board. Turn on the fan and place the fan about 5 inches from the demo board under test. This fan can temporarily be used for quick evaluation of the demo board at 300A to 400A load current but proper forced airflow system that can provide at least 400LFM or higher to the board under test, is strongly recommended for prolong operation of the demo board at maximum load current of 480A or 500A.

7. Once the input and output voltage are properly established and the fan is turned on, adjust the load current within the operating range of 0A to 480A max. Observe the output voltage regulation, output voltage ripples, switching node waveform, load transient response and other parameters. Refer to Figure 2 for proper output voltage ripples measurement.

NOTE: To measure the input/output voltage ripples properly, do not use the long ground lead on the oscilloscope probe. See Figure 2 for the proper scope probe technique. Short, stiff leads need to be soldered to the (+) and (–) terminals of an input or output capacitor. The probe’s ground ring needs to touch the (–) lead and the probe tip needs to touch the (+) lead.

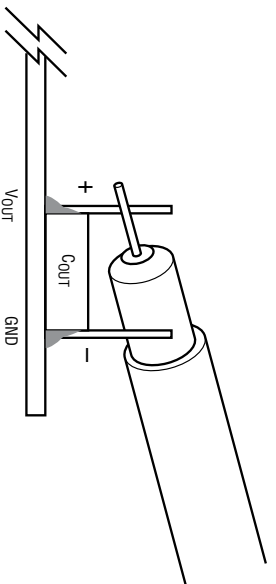


Figure 2. Scope Probe Placement for Measuring Output Ripple Voltage

8. The output voltage ripples can also be monitored using onboard  $V_{OUT}$  BNC terminal. Connect a short BNC cable from  $V_{OUT}$  (J11) to the input channel of the oscilloscope (scope probe ratio 1:1, AC-coupling) to observe output voltage ripples.  
(Option) Operation with  $V_{BIAS}$   
 $V_{BIAS}$  pin is the 5.5V output of an internal buck regulator that can be enabled or disabled with RUNP.  $V_{BIAS}$  regulator input is  $V_{IN}$ .  $V_{BIAS}$  pin and powered from  $V_{IN}$ . The advantage of using  $V_{BIAS}$  is bypassing the internal INTVCC\_LDO powered from  $V_{IN}$ , turning on the internal switch connected the 5.5V  $V_{BIAS}$  to INTVCC\_01 and INTVCC\_23 of the part, therefore reducing the power loss, improving the overall efficiency and lowering the temperature rise of the part while operating at high  $V_{IN}$  and high switching frequency.  $V_{BIAS}$  must exceed 4.8V and  $V_{IN}$  must be greater than 7V to activate the internal switch connecting  $V_{BIAS}$  to INTVCC\_01 and INTVCC\_23 of the part. In typical applications, it is recommended to enable  $V_{BIAS}$ .
9. Operation at low  $V_{IN}$ :  $4.5V \leq V_{IN} \leq 5.75V$

Set RUNP (JP1) to the “OFF” position. Remove R1, R47, R83, R119 to disconnect  $V_{IN}$ ,  $V_{BIAS}$  from  $V_{IN}$ . Short  $V_{BIAS}$  to GND by stuffing R8, R54, R90, R126 with zero-ohm resistors. Tie  $S_{VIN}$  to INTVCC by stuffing R157, R158, R159, R160, R161, R162, R163 and R164 with zero-ohm resistors. Make sure  $V_{IN}$  is within  $4.5V \leq V_{IN} \leq 5.75V$ . Additional input electrolytic capacitors should be installed between  $V_{IN}$  (J1) and GND (J2) to prevent  $V_{IN}$  from drooping or overshoot to a voltage level that can exceed the specified minimum  $V_{IN}$  (4.5V) and maximum  $V_{IN}$  (5.75V) during large output load transient. Since  $S_{VIN}$  is tied to  $V_{IN}$  and INTVCC is tied to  $S_{VIN}$ , monitor  $S_{VIN}$  and INTVCC to make sure INTVCC abs max voltage (6V) should never be exceeded to avoid permanent damage to the regulator.

## QUICK START PROCEDURE

### 10. (Option) Onboard Load Step Circuit

DC3082A-C provides onboard load transient circuit to measure  $\Delta V_{OUT}$  peak-to-peak deviation during rising or falling dynamic load transient. The simple load step circuit consisting of three paralleled 30V N-channel power MOSFETs in series with three paralleled  $3m\Omega$ , 1W, 1% current sense resistors. The MOSFETs are configured as voltage control current source (VCCS) devices, therefore the output current step and its magnitude is created and controlled by adjusting the amplitude of the applied input voltage step at the gate of the MOSFETs. Use a function generator to provide a voltage pulse between IOSTEP\_CLK (E33) and GND (E34). The input voltage pulse should be set at pulse width less than 300 $\mu$ s and maximum duty cycle less than 2% to avoid excessive thermal stress on the MOSFET devices. The output current step is measured directly across the current sense resistors and monitored by connecting

BNC cable from IOSTEP (J13) to the input of the oscilloscope (scope probe ratio 1:1, DC-coupling). The equivalent voltage to current scale is  $1mV/1A$ . The load step current slew rate  $di/dt$  can be varied by adjusting the rise time and fall time of the input voltage pulse applied at the gate of the MOSFETs. Output ripple voltage and output voltage during load transient of DC3082A-C should be measured at  $V_{OUT}$  BNC (J11) using short BNC cable. DC output voltage of DC3082A-C should be measured between  $V_{OSNS}^+$  (E3) and  $V_{OSNS}^-$  (E4) test points.

Refer to Figure 3 for proper demo board set up with PC. Users can use a PC to reconfigure the power management features of the LTM4681 such as: nominal  $V_{OUT}$ , margin set points, OV/UV limits, output current and temperature fault limits, sequencing parameters, the fault logs, fault responses, GPIOs and other functionality. The DC1613A dongle can be hot plugged when  $V_{IN}$  is present.

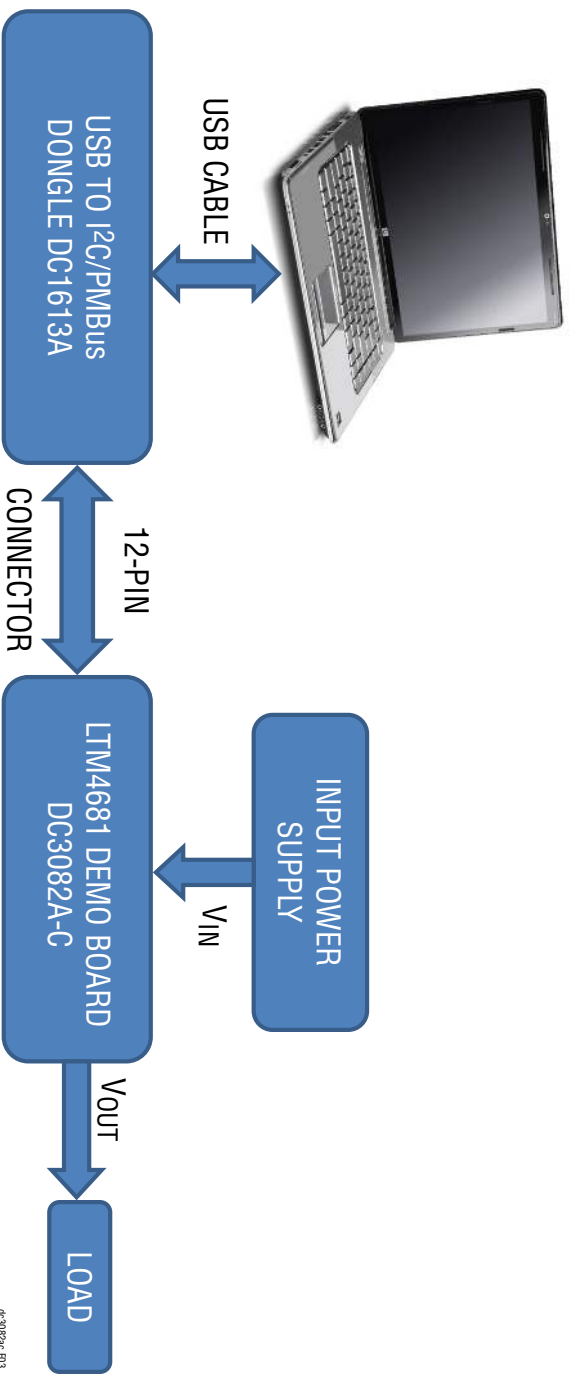


Figure 3. DC3082A-C Demo Board Setup with PC

dc3082a-r03

# DEMO MANUAL

## DC3082A-C

### LTpowerPlay QUICK START GUIDE

LTpowerPlay is a powerful Windows-based development environment that supports ADI power system management ICS. The software supports a variety of different tasks. You can use LTpowerPlay to evaluate ADI PSM µModule by connecting to a demo board system. LTpowerPlay can also be used in an off-line mode (with no hardware present) to build a multichip configuration file that can be saved and reloaded anytime. LTpowerPlay provides unprecedented diagnostic tool and debug features. It becomes a valuable diagnostic tool during board bring-up to program or tweak the power management scheme in a system, or to diagnose power issues when bringing up rails. LTpowerPlay utilizes the DC1613A USB-to-PMBus controller to communicate with one of many

potential targets, including all the parts in ADI PSM product category demo system. The software also provides an automatic update feature to keep the software current with the latest set of device drivers and documentation.

USB to PMBus Controller Dongle DC1613A for use with LTpowerPlay is available at [DC1613A](#).

To access technical support documents for ADI Digital Management Products, visit Help or view on-line help on the LTpowerPlay GUI main menu. The following procedure describes how to use LTpowerPlay to monitor and change the settings of LTM4681.

1. Download and install the [LTpowerPlay GUI](#).

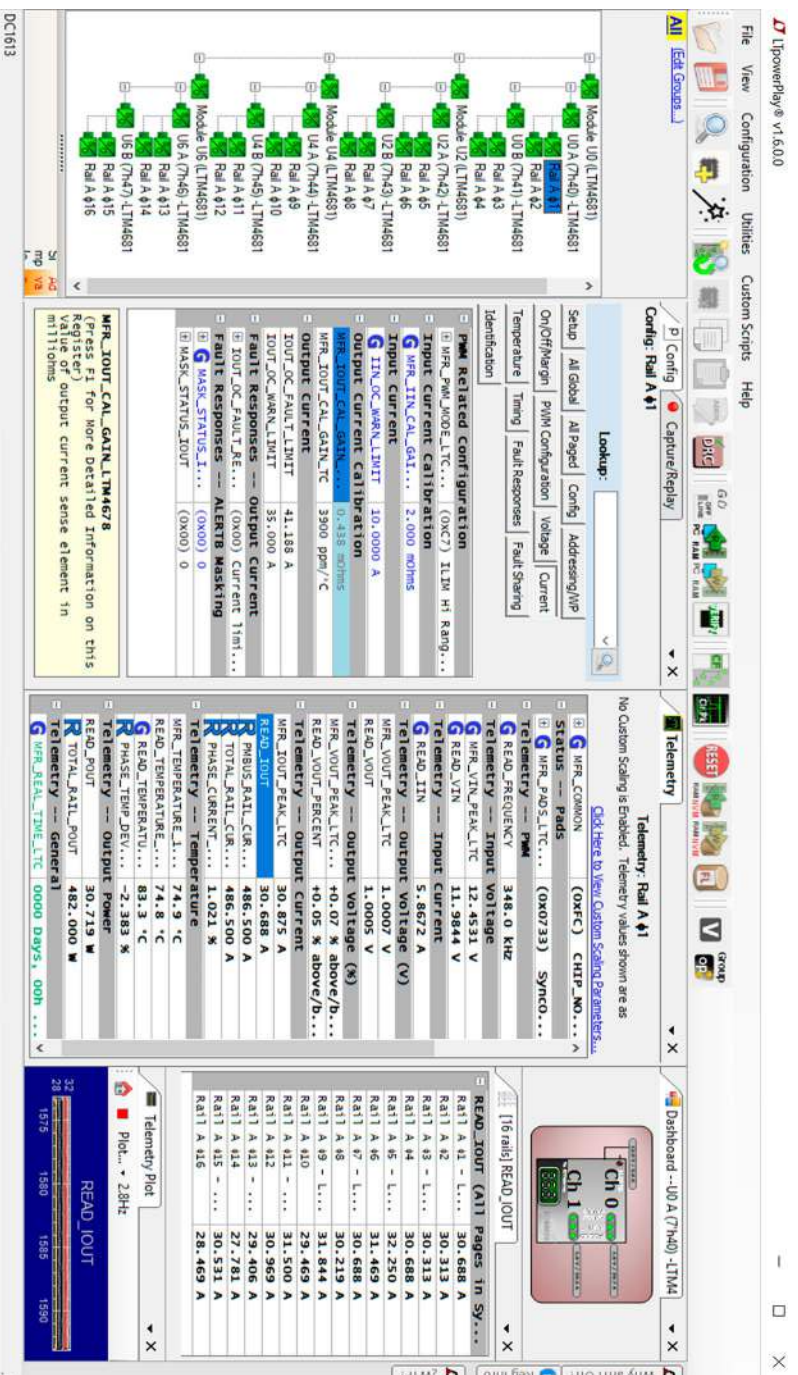
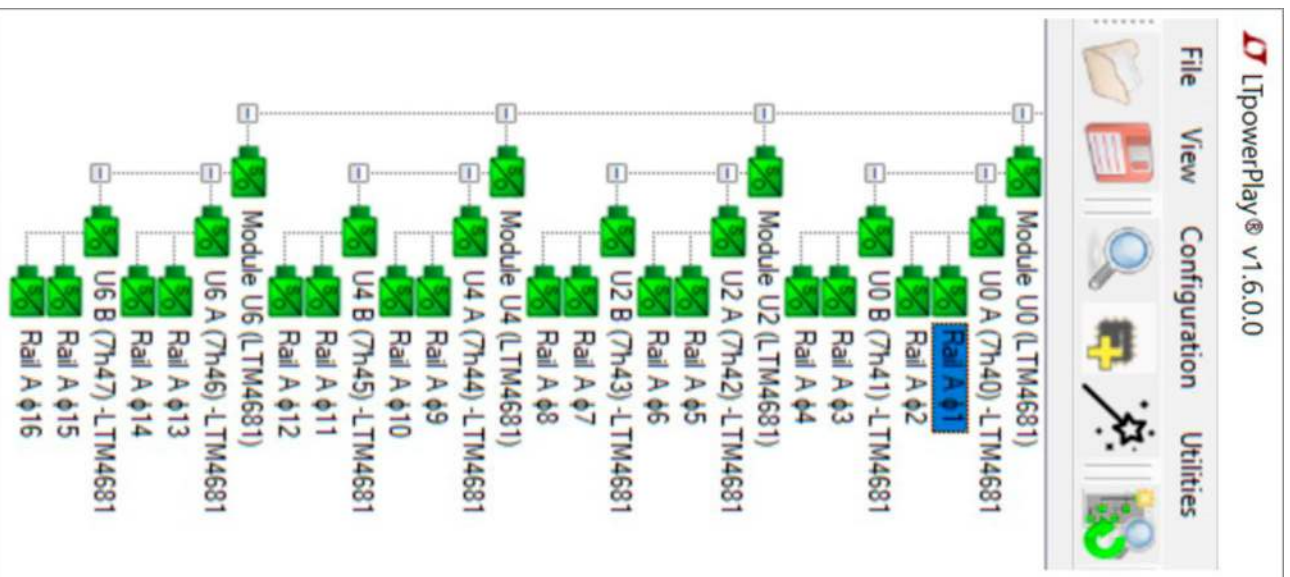


Figure 4. LTpowerPlay Main Interface

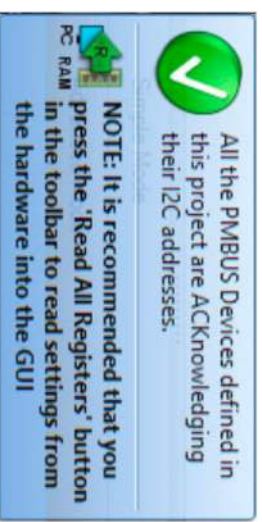
## LTpowerPlay QUICK START GUIDE

2. Launch the LTpowerPlay GUI.
  - a. The GUI should automatically identify the DC3082A-C.

The system tree on the left-hand side should look like this for DC3082A-C:



- b. A green message box shows for a few seconds in the lower left-hand corner, confirming that LTM4681 is communicating:



- c. In the Toolbar, click the “R” (RAM to PC) icon to read the RAM from the LTM4681. The configuration is read from the LTM4681 and loaded into the GUI:



- d. Example of program the output voltage to a different value.

In the Config Tab, click on the “Voltage” Tab in the main menu bar, type in 1.2V in the VOUT\_COMMAND box as showed below:

Field	Value
VIN_FAULT_LIMIT	16.1875 V
VIN_OV_MARGIN_LIMIT	6.2969 V
VIN_ON	6.5000 V
VIN_OFF	6.0000 V
MFR_RV1N_REASON_V	1000.000 mchms
VOUT_MARGIN_HIGH	1.2000
VOUT_MARGIN_LOW	-5.0 % above/below VOUT
VOUT_OV_MARGIN_LIMIT	-7.5 % above/below VOUT
VOUT_UV_FAULT_LIMIT	-10.0 % above/below VOUT
OUTPUT_Voltage	2.7500 V
VOUT_MAX	2.7500 V
MFR_VOUT_MODE	(0x1d) L1near, 150.51...
VOUT_TRANSITION_RATE	0.250 V/ms

Then click the “W” (PC to RAM) icon to write these register values to the LTM4681.

## LTpowerPlay QUICK START GUIDE



The output voltage will change to 1.2V.

If the write command is successfully executed, the following message should be seen:

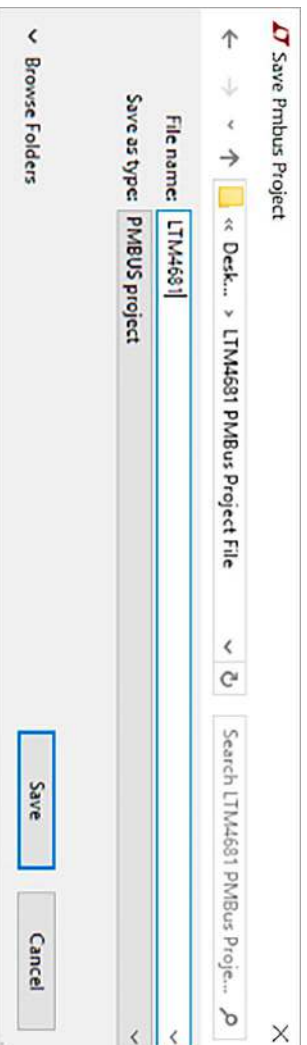


f.

Save the demo board configuration to a (\*.proj) file. Click the Save icon and save the file with a preferred file name.



e. All user configuration or changes can be saved into the NVM. In the toolbar, click "RAM to NVM" icon:





# TEST RESULTS

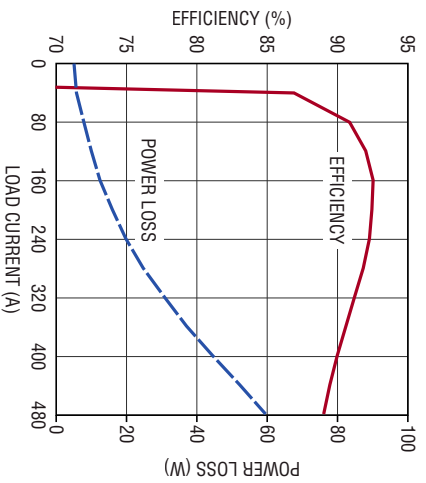


Figure 5. Efficiency: 1Vout

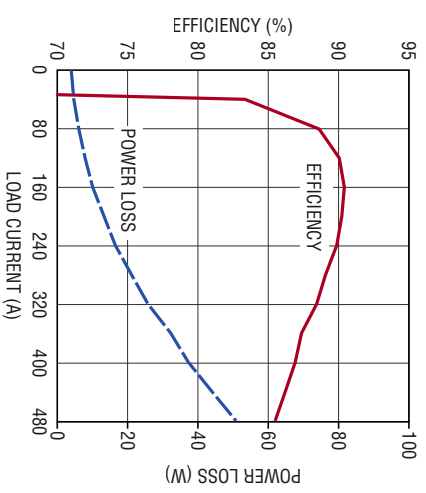


Figure 6. Efficiency: 0.6Vout

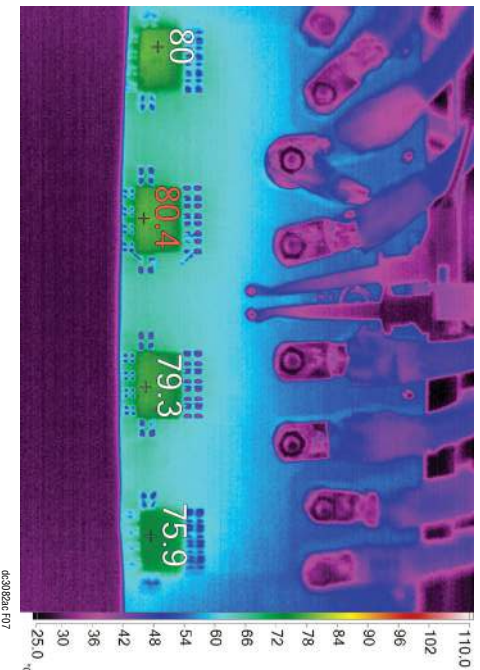


Figure 7. Thermal Performance, No Airflow

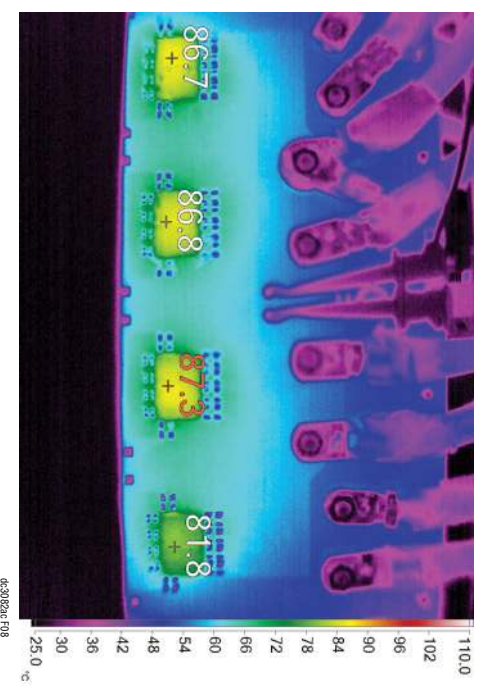
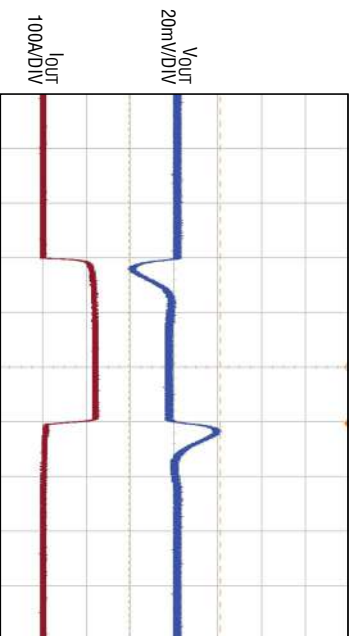


Figure 8. Thermal Performance, 400LFM Forced Airflow

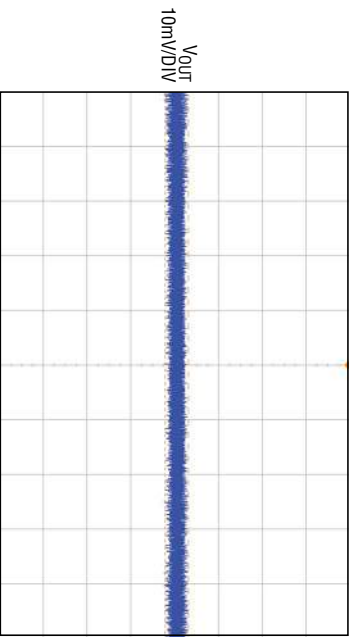
# DEMO MANUAL

## DC3082A-C

### TEST RESULTS



CIRCUIT CONFIGURATION: 16-PHASE SINGLE OUTPUT  
 $f_{sw} = 350\text{kHz}$ ,  $V_{in} = 12\text{V}$ ,  $V_{out} = 1\text{V}$   
 $I_{sw} = 12\text{A}$ ,  $V_{out} = 1\text{V}$   
 $I_{load\_step} = 0\text{A TO } 120\text{A AT } d_{r}/d_t = 40\text{A}/\mu\text{s}$   
 $V_{out(P-P)} = 41\text{9mV}$   
 OUTPUT VOLTAGE MEASURED AT V<sub>OUT</sub> BNC (J11)  
 AC-COUPLING, 20MHz BWL



CIRCUIT CONFIGURATION: 16-PHASE SINGLE OUTPUT  
 $f_{sw} = 350\text{kHz}$ ,  $V_{in} = 12\text{V}$ ,  $V_{out} = 1\text{V}$   
 $I_{load} = 480\text{A}$   
 $V_{out(P-P)} = 5.3\text{mV}$   
 OUTPUT VOLTAGE MEASURED AT V<sub>OUT</sub> BNC (J11)  
 AC-COUPLING, 20MHz BWL

Figure 9. Load Transient Response

Figure 10. Output Ripple Voltage

### PARTS LIST

ITEM	QTY	REFERENCE	PART DESCRIPTION	MANUFACTURER/PART NUMBER
<b>DC3082A-C Required Circuit Components</b>				
1	20	C1, C7, C8, C10, C11, C26, C32, C33, C35, C36, C50, C56, C57, C59, C60, C74, C80, C81, C83, C84	CAP, 1µF, X7R, 25V, 10%, 0603, AEC-Q200	MURATA, GCM188R71E105KA64D
2	8	C2, C3, C27, C28, C51, C52, C75, C76	CAP, 2.2µF, X5R, 25V, 10%, 0603	MURATA, GRM188R61E225KA12D
3	8	C6, C9, C31, C34, C55, C58, C79, C82	CAP, 4.7µF, X5R, 16V, 10%, 0603	MURATA, GRM188R61C475KAAJD
4	4	C12, C37, C61, C85	CAP, 22µF, X5R, 16V, 10%, 1206	AVX, 1206VD226KAT2A
5	1	C14	CAP, 0.015µF, X7R, 50V, 5%, 0603	AVX, 06035C153JAT2A
6	1	C15	CAP, 470pF, X7R, 50V, 10%, 0603	AVX, 06035C471KAT2A
7	15	C18, C21, C24, C39, C42, C45, C48, C63, C66, C69, C72, C87, C91, C94, C97	CAP, 10pF, C0G, 50V, 5%, 0603	AVX, 06035A100JAT2A
8	1	C99	CAP, 0.01µF, X7R, 50V, 10%, 0603	AVX, 06035C103KAT2A
9	2	C100, C101	CAP, 100µF, X5R, 6.3V, 10%, 1206	MURATA, GRM31CR60J107KE39L
10	2	C102, C103	CAP, 0.1µF, X7R, 16V, 10%, 0603, FLEXITERM	AVX, 0603YC104KAZZA
11	4	C1N1-C1N4	CAP, 270µF, ALUM POLY HYB, 25V, 20%, 8mm x 10.2mm SMD, RADIAL, AEC-Q200, EEHZK	PANASONIC, EEH-ZK1E271P
12	34	C1N5-C1N38	CAP, 22µF, X5R, 25V, 10%, 1210	KEMET, C1210C226K3PACTU
13	66	C01-C04, C08-C011, C015-C018, C022-C025, C029-C032, C036-C039, C043-C046, C050-C053, C057-C060, C064-C067, C071-C074, C078-C081, C085-C088, C092-C095, C099-C0102, C0106-C0109, C0113, C0114	CAP, 100µF, X5R, 6.3V, 20%, 1210	AVX, 1210BD107MAT2A

# DEMO MANUAL

## DC3082A-C

### PARTS LIST

ITEM	QTY	REFERENCE	PART DESCRIPTION	MANUFACTURER/PART NUMBER
14	48	C05-C07, C012-C014, C019-C021, C026-C028, C033-C035, C040-C042, C047-C049, C054-C056, C061-C063, C068-C070, C075-C077, C082-C084, C089-C091, C096-C098, C0103-C0105, C0110-C0112	CAP, 470uF, TANT, POSCAP, 2.5V, 20%, 7343, TPF SERIES	PANASONIC, ETPF470M5H
15	1	D1	LED, GREEN, WATER CLEAR, 0603	WURTH ELEKTRONIK, 150060GS75000
16	2	D2, D3	LED, RED, WATER CLEAR, 0603	WURTH ELEKTRONIK, 150060RS75000
17	2	D4, D5	DIODE, SCHOTTKY, 20V, 0.5A, SOD-882, LEADLESS	NEXPERIA, PMEIG2005AEL, 315
18	1	Q3	XSTR., MOSFET, N-CH, 60V, 220mA, SOT23-3, AEC-Q101	DIODES INC., 2N7002A-13
19	2	Q7, Q9	XSTR., MOSFET, P-CH, 20V, 5.9A, SOT-23-3 (TO-236-3)	VISHAY, SIZ365EDS-T1-GE3
20	3	Q13, Q14, Q17	XSTR., MOSFET, N-CH, 30V, 150A, D2PAK	INFINEON, IRL7833STRLPBF
21	12	R1-R3, R47-R49, R83-R85, R119-R121	RES, 1k, 1%, 1/10W, 0603, AEC-Q200	NIC, NRC06F1R00TRF
22	8	R1A, R1B, R1C, R1D, R2A, R2B, R2C, R2D	RES, 0.002k, 1%, 1W, 2512, SENSE	VISHAY, WSL2512L2L000FEA
23	18	R4-R7, R9, R23, R50-R53, R86-R89, R122-R125	RES, 0k, 1/10W, 0603, AEC-Q200	VISHAY, CRCW06030000Z0EA
24	3	R11, R12, R156	RES, 10k, 1%, 1/10W, 0603	VISHAY, CRCW060310R0FKEA
25	6	R15, R20-R22, R155, R180	RES, 10k, 1%, 1/10W, 0603, AEC-Q200	VISHAY, CRCW060310K0FKEA
26	2	R16, R17	RES, 1k, 1%, 1/10W, 0603	VISHAY, CRCW06031K00FKEA
27	4	R18, R19, R186, R187	RES, 4.99k, 1%, 1/10W, 0603, AEC-Q200	PANASONIC, ERJ3EKF4991V
28	1	R36	RES, 787k, 1%, 1/10W, 0603	NIC, NRC06F7870TRF
29	1	R58	RES, 1.65k, 1%, 1/10W, 0603	NIC, NRC06F1651TRF
30	1	R72	RES, 2.43k, 1%, 1/10W, 0603	YAGEO, 9C06031A2431FKHFT
31	1	R94	RES, 3.24k, 1%, 1/10W, 0603	YAGEO, RC0603FR-073K24L
32	1	R108	RES, 4.22k, 1%, 1/10W, 0603	NIC, NRC06F4221TRF
33	1	R130	RES, 5.23k, 1%, 1/10W, 0603, AEC-Q200	PANASONIC, ERJ3EKF5231V
34	1	R144	RES, 6.34k, 1%, 1/10W, 0603, AEC-Q200	KOA SPEER, RK73H1JTTD6341F
35	1	R177	RES, 200k, 1%, 1/10W, 0603	VISHAY, CRCW0603200RFKEA
36	2	R178, R179	RES, 127k, 1%, 1/10W, 0603, AEC-Q200	NIC, NRC06F1270TRF
37	3	R181-R183	RES, 0.003k, 1%, 1W, 2512, ±350ppm, METAL, SENSE	PANASONIC, ERJUM1W5F3M0U
38	2	R184, R185	RES, 0k, 1W, 2512, SENSE, COPPER	VISHAY, WSL251200000ZEA9
39	1	SW1	SWITCH, SLIDE, DPDT, 0.3A, 6VDC, PTH	C&K, JS202011CQN
40	4	U1-U4	IC, QUAD OUTPUT µModule REG., BGA	ANALOG DEVICES, LTM46811Y#PBF
41	1	U5	IC, MEMORY EEPROM, 2Kb (256x8), TSSOP-8, 400KHz	MICROCHIP, 24LC025-I/ST

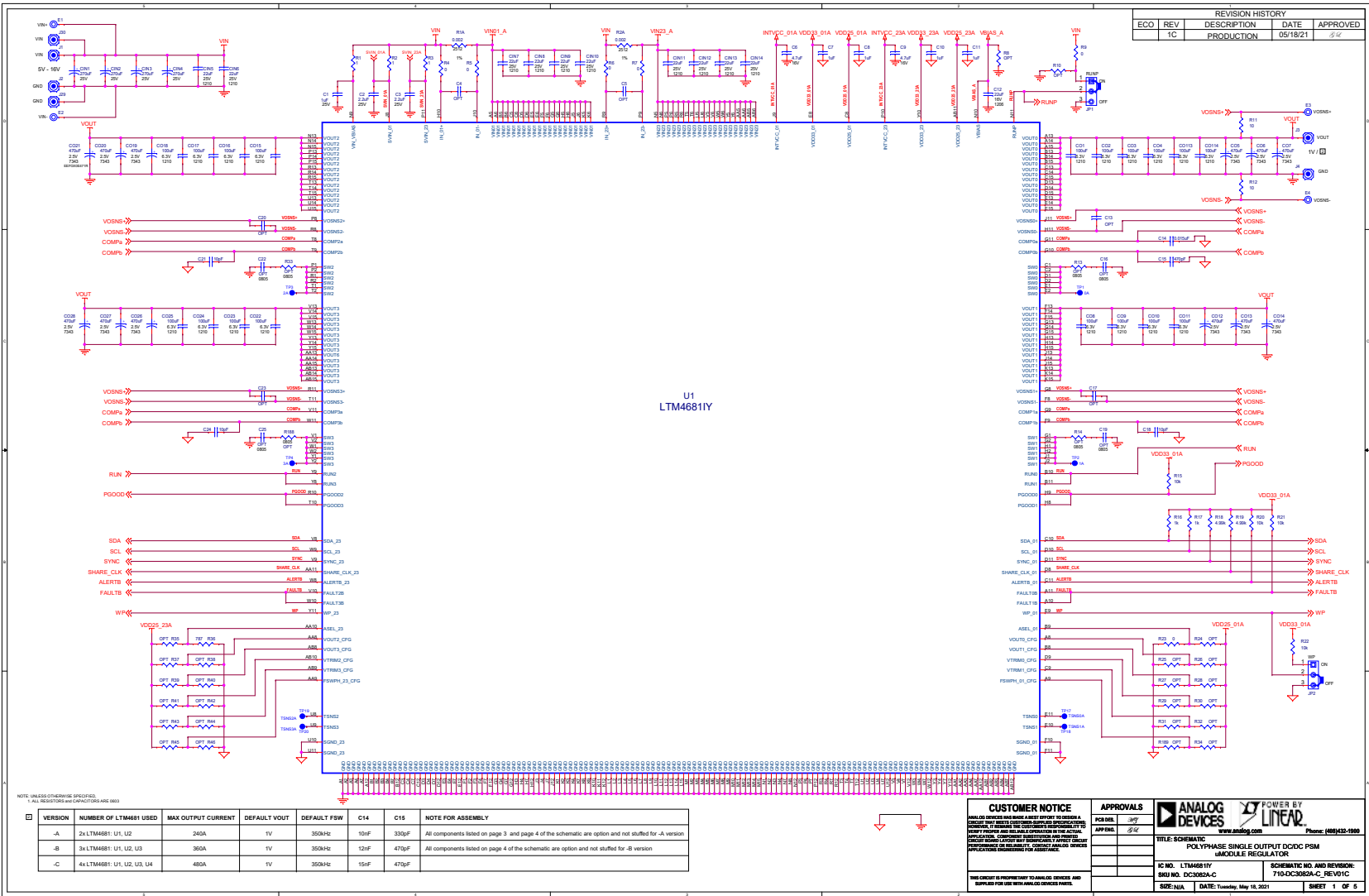
# DEMO MANUAL

## DC3082A-C

### PARTS LIST

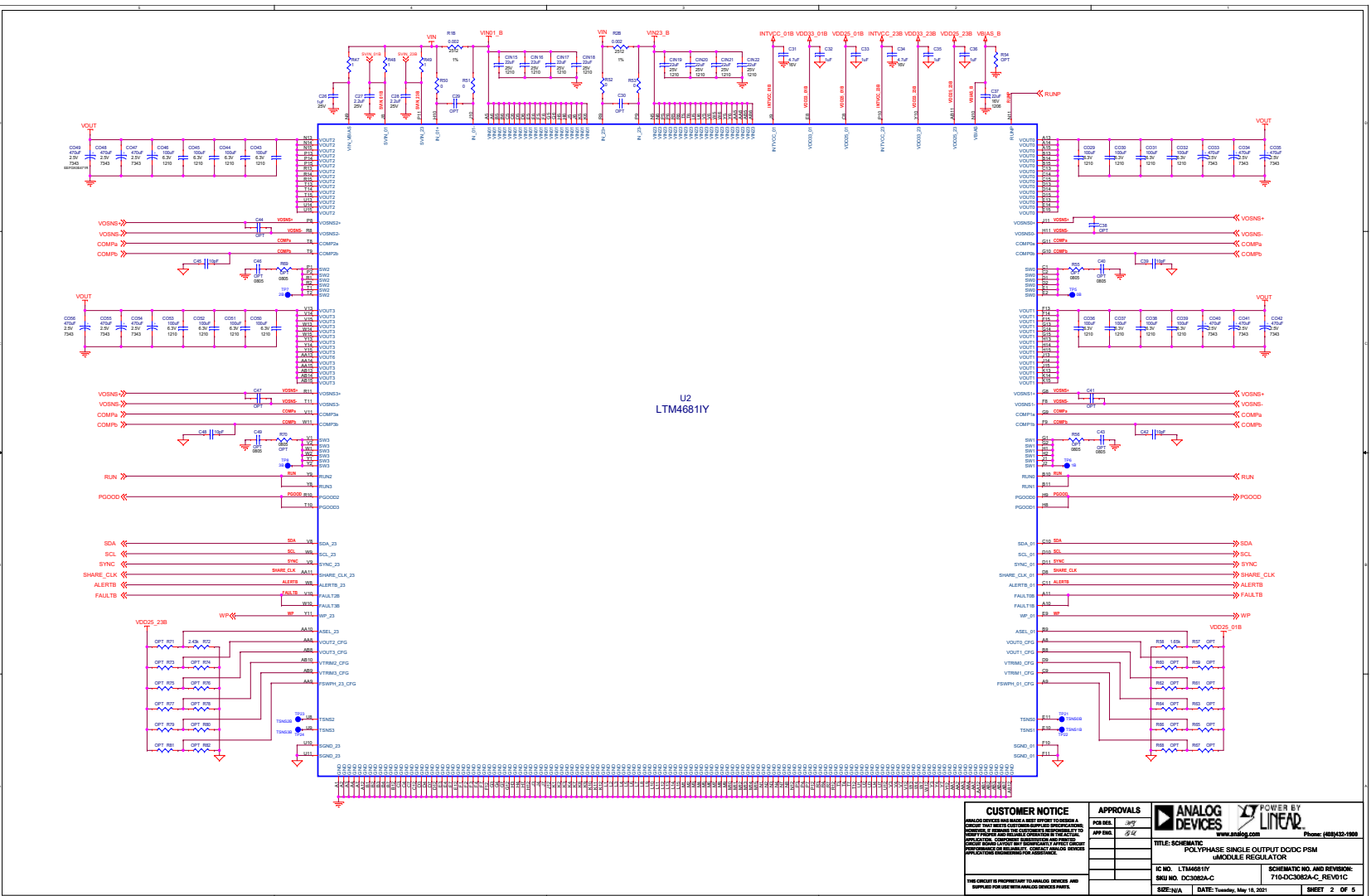
ITEM	QTY	REFERENCE	PART DESCRIPTION	MANUFACTURER/PART NUMBER
<b>DC3082A-C Additional Demo Board Circuit Components</b>				
1	0	C4, C5, C13, C17, C20, C23, C29, C30, C38, C41, C44, C47, C53, C54, C62, C65, C68, C71, C77, C78, C86, C89, C93, C96	CAP, OPTION, 0603	
2	0	C16, C19, C22, C25, C40, C43, C46, C49, C64, C67, C70, C73, C88, C92, C95, C98	CAP, OPTION, 0805	
3	0	Q1	XSTR., OPTION, MOSFET, P-CH, SOT-23	
4	0	R8, R10, R24-R32, R34, R35, R37-R46, R54, R57, R59-R68, R71, R73-R82, R90, R93, R95-R104, R107, R109-R118, R126, R129, R131-R140, R143, R145-R154, R157-R174, R189	RES, OPTION, 0603	
5	0	R13, R14, R33, R55, R56, R69, R70, R91, R92, R105, R106, R127, R128, R141, R142, R188	RES, OPTION, 0805	
6	0	R175, R176	RES, OPTION, 2512	
<b>DC3082A-C Hardware: For DC3082A-C Only</b>				
1	34	E1-E34	TEST POINT, TURRET, 0.094 MTG. HOLE, PCB 0.062 THK	MILL-MAX, 2501-2-00-80-00-00-07-0
2	12	J1--J10, J29, J30	EVAL BOARD STUD HARDWARE SET, #10-32	ANALOG DEVICES, 720-0010
3	2	J11, J13	CONN., RF BNC, RCPT, JACK, 5-PIN, ST, THT, 50Ω	AMPHENOL RF 112404
4	1	J27	CONN., HDR, SHROUDED, MALE, 1×4, 2mm, VERT, ST, THT	HIROSE ELECTRIC, DF3A-4P-2DSA
5	1	J28	CONN., HDR, SHROUDED, MALE, 2×6, 2mm, VERT, ST, THT	AMPHENOL, 98414-G06-12ULF
6	2	JP1, JP2	CONN., HDR, MALE, 1×3, 2mm, VERT, ST, THT, NO SUBS. ALLOWED	WURTH ELEKTRONIK, 62000311121
7	1	LB1	LABEL, SPEC, DEMO BOARD SERIAL NUMBER	BRADY, THT-96-717-10
8	4	MP1-MP4	STANDOFF, NYLON, SNAP-ON, 0.5" (12.7mm)	WURTH ELEKTRONIK, 702936000
9	1	PCB1	PCB, DC3082A	ANALOG DEVICES APPROVED SUPPLIER, 600-DC3082A
10	1	STNCL1	TOOL, STENCIL, DC3082A	ANALOG DEVICES APPROVED SUPPLIER, 830-DC3082A
11	2	XJP1, XJP4	CONN., SHUNT, FEMALE, 2 POS, 2mm	WURTH ELEKTRONIK, 60800213421

# SCHEMATIC DIAGRAM

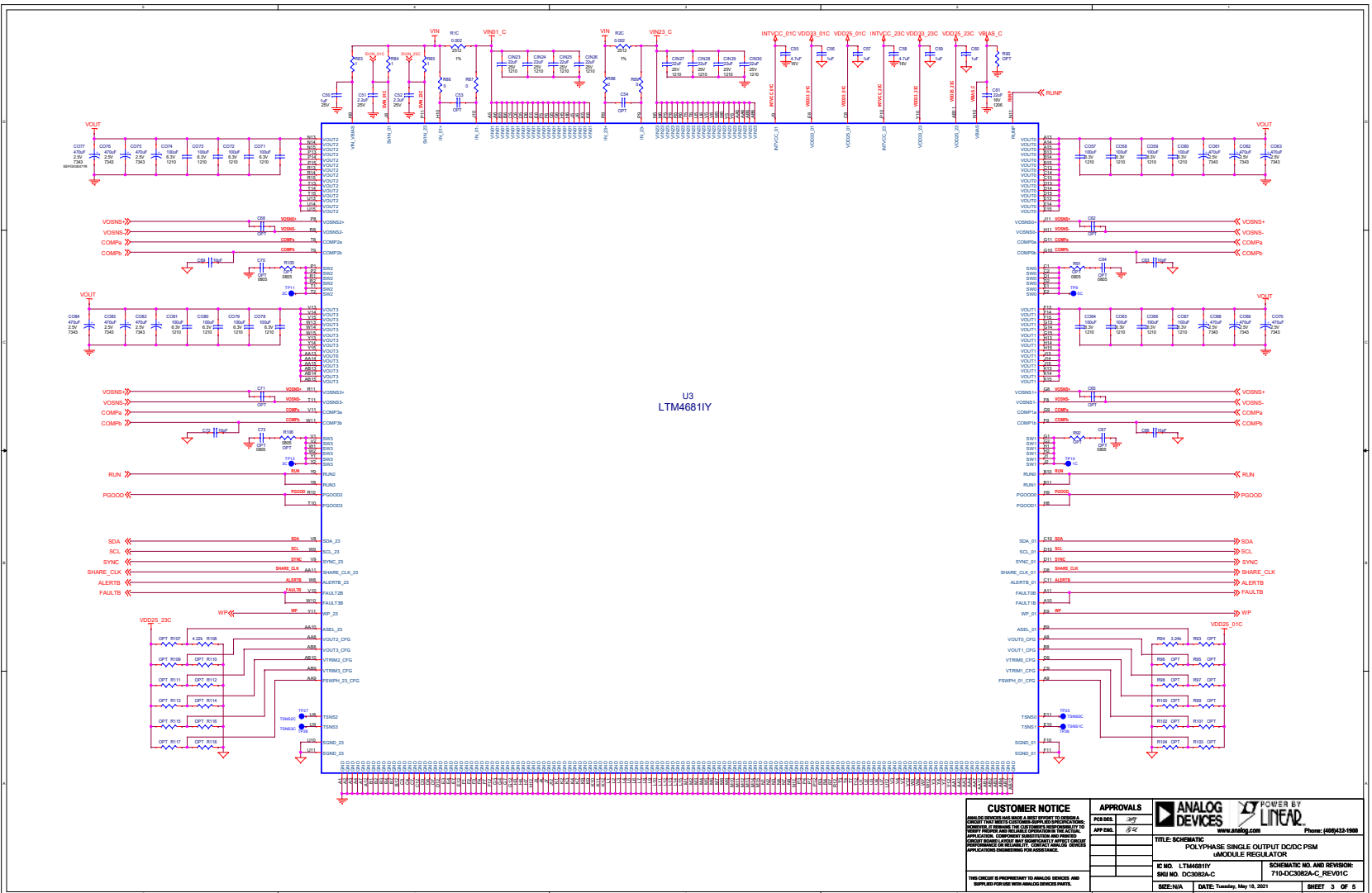


DEMO MANUAL  
DC3082A-C

SCHEMATIC DIAGRAM



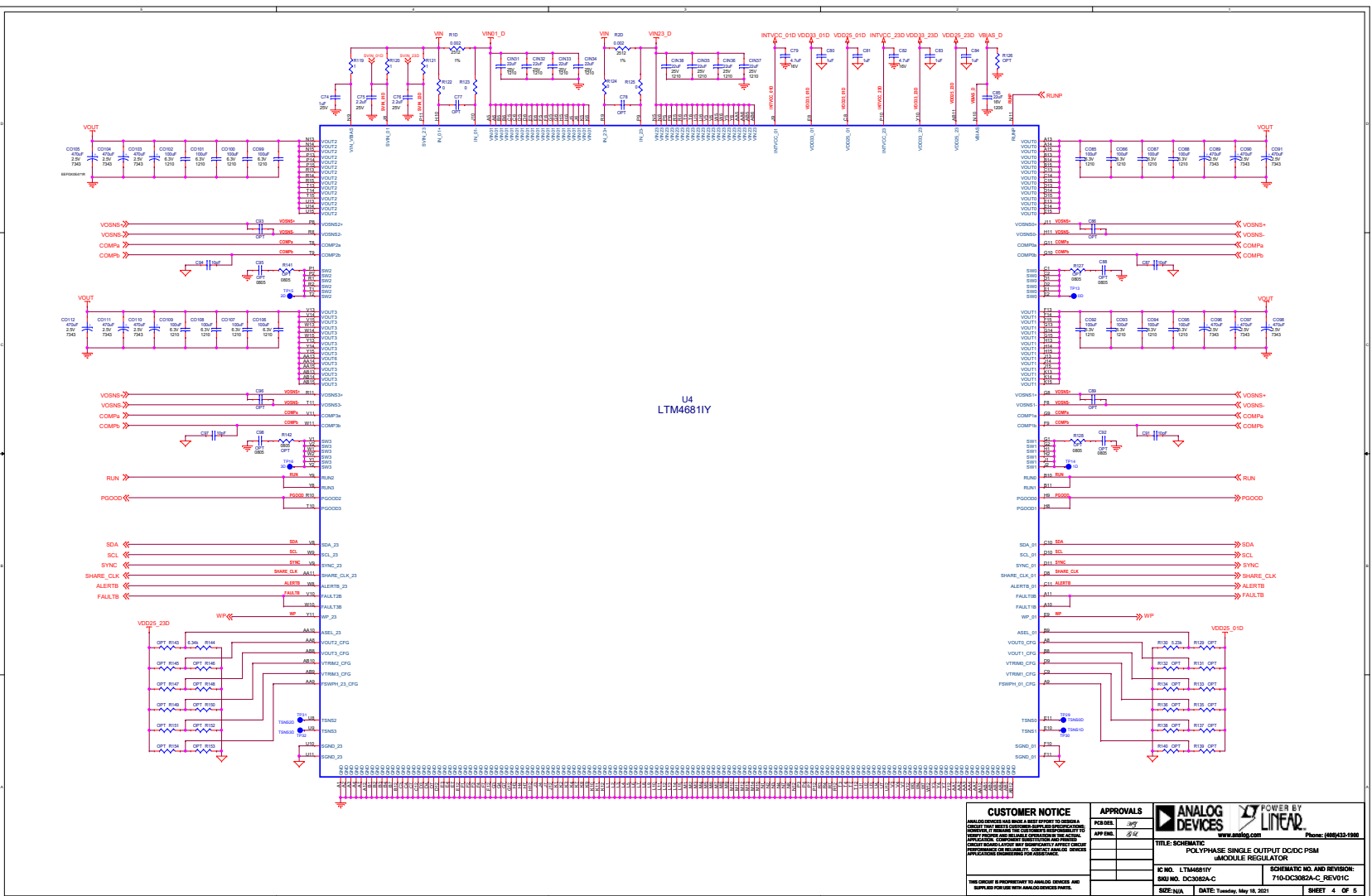
# SCHEMATIC DIAGRAM



<b>CUSTOMER NOTICE</b> <small>ANALOG DEVICES HAS LIMITED LIABILITY AND SHALL NOT BE RESPONSIBLE FOR ANY DAMAGES, INCLUDING REASONABLE ATTORNEY'S FEES, ARISING FROM THE USE OF ANY ANALOG DEVICES PRODUCT. CUSTOMER'S USE OF ANY ANALOG DEVICES PRODUCT SHALL BE AT CUSTOMER'S SOLE RISK. ANALOG DEVICES SHALL NOT BE RESPONSIBLE FOR ANY DAMAGES, INCLUDING REASONABLE ATTORNEY'S FEES, ARISING FROM THE USE OF ANY ANALOG DEVICES PRODUCT. ANALOG DEVICES SHALL NOT BE RESPONSIBLE FOR ANY DAMAGES, INCLUDING REASONABLE ATTORNEY'S FEES, ARISING FROM THE USE OF ANY ANALOG DEVICES PRODUCT.</small>	<b>APPROVALS</b> PCB DEL: [ ] APP EWL: [ ]	<b>ANALOG DEVICES</b> <small>POWER BY</small> <b>LINEAR</b> <small>www.analog.com</small> <small>Phone: (408)435-1000</small>
	<b>TITLE: SCHEMATIC POLYPHASE SINGLE OUTPUT DC/DC PSM UNMOULDED REGULATOR</b>	
<b>IC NO. LTM4681Y</b> <b>REV NO. DC3082A-C</b>	<b>SCHEMATIC NO. AND REVISION: 7164CC082A-C REV01C</b>	
<small>THIS SCHEMATIC IS PROPRIETARY TO ANALOG DEVICES AND IS NOT TO BE REPRODUCED OR TRANSMITTED IN ANY FORM OR BY ANY MEANS, ELECTRONIC OR MECHANICAL, INCLUDING PHOTOCOPYING, RECORDING, OR BY ANY INFORMATION STORAGE AND RETRIEVAL SYSTEM.</small>	<b>SIZE/NA</b>   <b>DATE: Tuesday, May 18, 2021</b>	<b>SHEET 3 OF 5</b>

DEMO MANUAL  
 DC3082A-C

**SCHEMATIC DIAGRAM**

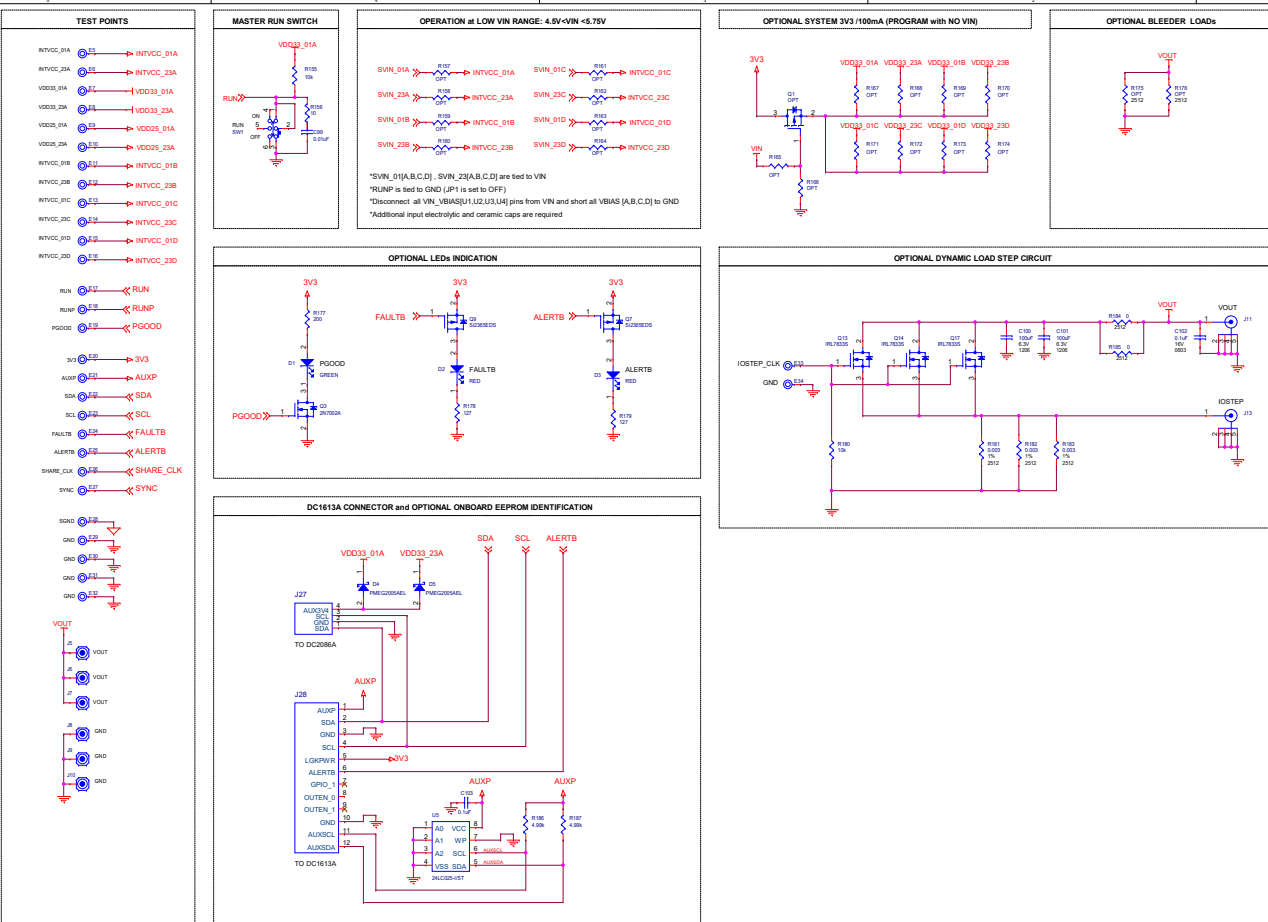


<p><b>CUSTOMER NOTICE</b></p> <p>ANALOG DEVICES HAS MADE A BEST EFFORT TO VERIFY THE CORRECTNESS OF THIS SCHEMATIC. HOWEVER, THE CUSTOMER IS RESPONSIBLE FOR THE PROPER DESIGN AND TESTING OF THE APPLICATION. CONSULT YOUR LOCAL SALES REPRESENTATIVE FOR ASSISTANCE.</p> <p>THIS CIRCUIT IS PROPRIETARY TO ANALOG DEVICES AND IS NOT TO BE REPRODUCED OR TRANSMITTED IN ANY FORM OR BY ANY MEANS.</p>	<p><b>APPROVALS</b></p> <table border="1"> <tr> <td>DESIGN</td> <td>ST</td> </tr> <tr> <td>APP</td> <td>ST</td> </tr> </table>	DESIGN	ST	APP	ST	<p><b>ANALOG DEVICES</b> POWER BY <b>LINEAR</b></p> <p>www.analog.com Phone: (408)435-1000</p> <p><b>TITLE: SCHEMATIC</b> POLYPHASE SINGLE OUTPUT DC/DC PSM LMODULE REGULATOR</p>
	DESIGN	ST				
APP	ST					
<p>IC NO. LTM4681Y SKU NO. DC3082A-C SIZE: N/A</p>	<p>SCHEMATIC NO. AND REVISION: 710-DC3082A-C REV:0/C DATE: Tuesday, May 18, 2011 SHEET 4 OF 5</p>					



# SCHEMATIC DIAGRAM

# DEMO MANUAL DC3082A-C



<b>CUSTOMER NOTICE</b>		<b>APPROVALS</b>		
<small>ANALOG DEVICES HAS MADE A BEST EFFORT TO DESIGN A BOARD FOR YOUR CUSTOMER'S APPLICATION. THE BOARD IS PROVIDED AS A DEMO ONLY. THE CUSTOMER IS RESPONSIBLE FOR ANY CHANGES TO THE BOARD. CUSTOMER'S RESPONSIBILITY INCLUDES VERIFYING THE BOARD'S PERFORMANCE IN THEIR APPLICATION. CUSTOMER'S RESPONSIBILITY INCLUDES VERIFYING THE BOARD'S PERFORMANCE IN THEIR APPLICATION. CUSTOMER'S RESPONSIBILITY INCLUDES VERIFYING THE BOARD'S PERFORMANCE IN THEIR APPLICATION.</small>		PCB MFR: <input type="checkbox"/> JPT APP ENG: <input checked="" type="checkbox"/> JJK	TITLE: SCHEMATIC POLYPHASE SINGLE OUTPUT DC/DC PSM U/MODULE REGULATOR	
<small>THIS DESIGN IS PROPRIETARY TO ANALOG DEVICES AND IS NOT TO BE REPRODUCED OR COPIED FOR ANY OTHER PURPOSES.</small>		IC NO.: LTM4081V SW NO.: DC3082A-C SSI: N/A	SCHEMATIC NO. AND REVISION: 710-DC3082A-C REV:1C DATE: Tuesday, May 18, 2010	Phone: (408)435-1000 www.analog.com SHEET 5 OF 5

Information furnished by Analog Devices is believed to be accurate and reliable. However, no responsibility is assumed by Analog Devices for its use, nor for any infringements of patents or other rights of third parties that may result from its use. Specifications subject to change without notice. No license is granted by implication or otherwise under any patent or patent rights of Analog Devices.

# DEMO MANUAL

## DC3082A-C

---



**ESD Caution**  
**ESD (electrostatic discharge) sensitive device.** Charged devices and circuit boards can discharge without detection. Although this product features patented or proprietary protection circuitry, damage may occur on devices subjected to high energy ESD. Therefore, proper ESD precautions should be taken to avoid performance degradation or loss of functionality.

---

### Legal Terms and Conditions

By using the evaluation board discussed herein (together with any tools, components, documentation or support materials, the "Evaluation Board"), you are agreeing to be bound by the terms and conditions set forth below ("Agreement") unless you have purchased the Evaluation Board, in which case the Analog Devices Standard Terms and Conditions of Sale shall govern. Do not use the Evaluation Board until you have read and agreed to the Agreement. Your use of the Evaluation Board shall signify your acceptance of the Agreement. This Agreement is made by and between you ("Customer") and Analog Devices, Inc. ("ADI"), with its principal place of business at One Technology Way, Norwood, MA 02062, USA. Subject to the terms and conditions of the Agreement, ADI hereby grants to Customer a free, limited, personal, temporary, non-exclusive, non-sub licensable, non-transferable license to use the Evaluation Board FOR EVALUATION PURPOSES ONLY. Customer understands and agrees that the Evaluation Board is provided for the sole and exclusive purpose referenced above, and agrees not to use the Evaluation Board for any other purpose. Furthermore, the license granted is expressly made subject to the following additional limitations: Customer shall not (i) rent, lease, display, sell, transfer, assign, sublicense, or distribute the Evaluation Board; and (ii) permit any Third Party to access the Evaluation Board. As used herein, the term "Third Party" includes any entity other than ADI. Customer, their employees, affiliates and in-house consultants. The Evaluation Board is NOT sold to Customer; all rights not expressly granted herein, including ownership of the Evaluation Board, are reserved by ADI. CONFIDENTIALITY. This Agreement and the Evaluation Board shall all be considered the confidential and proprietary information of ADI. Customer may not disclose or transfer any portion of the Evaluation Board to any other party for any reason. Upon discontinuation of use of the Evaluation Board or termination of this Agreement, Customer agrees to promptly return the Evaluation Board to ADI. ADDITIONAL RESTRICTIONS. Customer may not disassemble, decompile or reverse engineer chips on the Evaluation Board. Customer shall inform ADI of any occurred damages or any modifications or alterations it makes to the Evaluation Board, including but not limited to soldering or any other activity that affects the material content of the Evaluation Board. Modifications to the Evaluation Board must comply with applicable law, including but not limited to the RoHS Directive. TERMINATION. ADI may terminate this Agreement at any time upon giving written notice to Customer. Customer agrees to return to ADI the Evaluation Board at that time. LIMITATION OF LIABILITY. THE EVALUATION BOARD PROVIDED HEREUNDER IS PROVIDED "AS IS" AND ADI MAKES NO WARRANTIES OR REPRESENTATIONS OF ANY KIND WITH RESPECT TO IT. ADI SPECIFICALLY DISCLAIMS ANY REPRESENTATIONS, ENDORSEMENTS, GUARANTEES, OR WARRANTIES, EXPRESS OR IMPLIED, RELATED TO THE EVALUATION BOARD INCLUDING, BUT NOT LIMITED TO, THE IMPLIED WARRANTY OF MERCHANTABILITY, TITLE, FITNESS FOR A PARTICULAR PURPOSE OR NONINFRINGEMENT OF INTELLECTUAL PROPERTY RIGHTS. IN NO EVENT WILL ADI AND ITS LICENSORS BE LIABLE FOR ANY INCIDENTAL, SPECIAL, INDIRECT OR CONSEQUENTIAL DAMAGES RESULTING FROM CUSTOMER'S POSSESSION OR USE OF THE EVALUATION BOARD, INCLUDING BUT NOT LIMITED TO LOST PROFITS, DELAY COSTS, LABOR COSTS OR LOSS OF GOODWILL. ADI'S TOTAL LIABILITY FROM ANY AND ALL CAUSES SHALL BE LIMITED TO THE AMOUNT OF ONE HUNDRED US DOLLARS (\$100.00). EXPORT Customer agrees that it will not directly or indirectly export the Evaluation Board to another country, and that it will comply with all applicable United States federal laws and regulations relating to exports. GOVERNING LAW. This Agreement shall be governed by and construed in accordance with the substantive laws of the Commonwealth of Massachusetts (excluding conflict of law rules). Any legal action regarding this Agreement will be heard in the state or federal courts having jurisdiction in Suffolk County, Massachusetts, and Customer hereby submits to the personal jurisdiction and venue of such courts. The United Nations Convention on Contracts for the International Sale of Goods shall not apply to this Agreement and is expressly disclaimed.

Rev. 0

---

# 18



08/21  
[www.analog.com](http://www.analog.com)  
© ANALOG DEVICES, INC. 2021