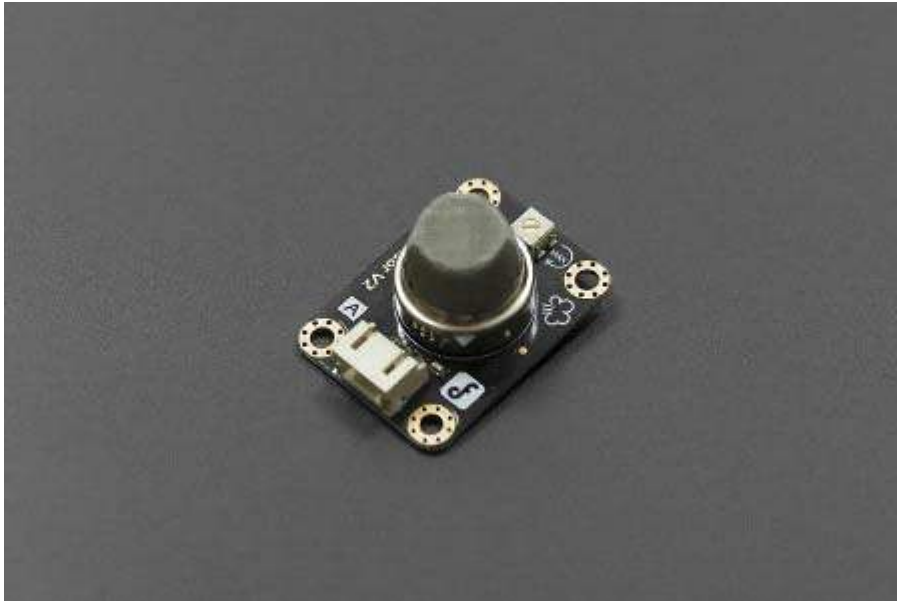


## LPG Gas Sensor(MQ6) (SKU:SEN0131)



### Contents

- [1 Introduction](#)
  - [1.1 Specification](#)
- [2 Pin Definition](#)
- [3 Connection Diagram](#)
- [4 Sample Code](#)

### Introduction

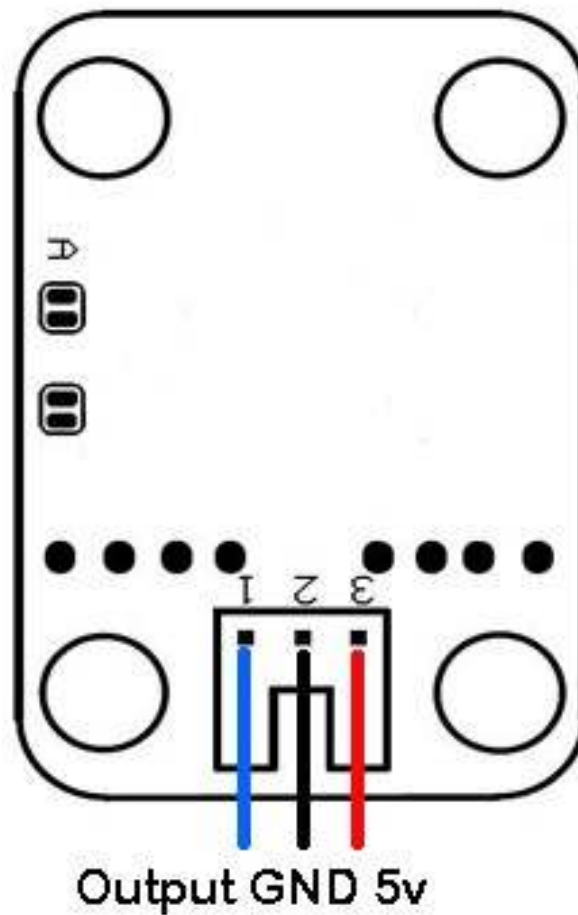
The MQ6 is a simple-to-use liquefied petroleum gas (LPG) sensor. It can be used in gas leakage detecting equipment in consumer and industry applications, this sensor is suitable for detecting LPG, iso-butane, propane, LNG. Avoid the noise of alcohol, cooking fumes and cigarette smoke. The sensitivity can be adjusted by the potentiometer.

## Specification

- Power supply needs: 5V
- Interface type: Analog
- Pin Definition: 1-Output 2-GND 3-VCC
- High sensitivity to LPG, iso-butane, propane
- Small sensitivity to alcohol, smoke
- Fast response
- Stable and long life
- Simple drive circuit
- Size: 40x20mm

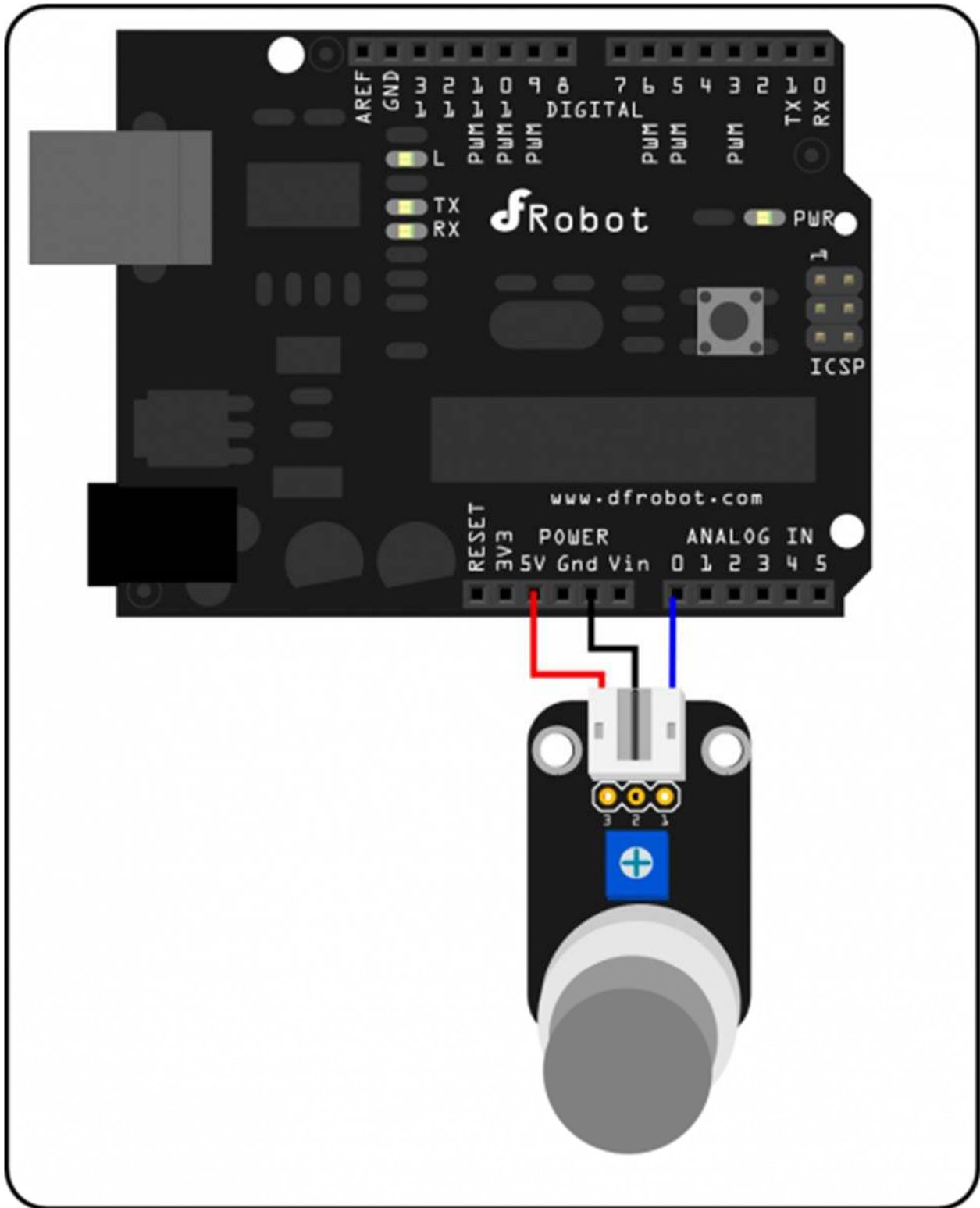
## Pin Definition

1. Signal Output
2. GND
3. Power



Analog Sensor Pin Definition

# Connection Diagram



Analog sensor connection diagram

## Sample Code

```
///  
//Arduino Sample Code  
void setup()  
{  
  Serial.begin(9600); //Set serial baud rate to 9600 bps  
}  
void loop()  
{  
  int val;  
  val=analogRead(0); //Read Gas value from analog 0  
  Serial.println(val,DEC); //Print the value to serial port  
  delay(100);  
}
```