

## Device connector, front mounting - CA-17P1NA22S00 - 1619917

Please be informed that the data shown in this PDF Document is generated from our Online Catalog. Please find the complete data in the user's documentation. Our General Terms of Use for Downloads are valid (<http://phoenixcontact.com/download>)



Device connector for front wall, straight, shielded: yes, SPEEDCON locking, M23, Number of positions: 17, Type of contact: Male connector, Solder-in connection, Flat gasket, 4x Ø3.2, Flange dimensions: 25 mm x 25 mm

The figure shows the 12-pos. product version



### Key Commercial Data

|                      |          |
|----------------------|----------|
| Packing unit         | 1 pc     |
| Custom tariff number | 85366990 |
| Country of origin    | Germany  |

### Technical data

#### Temperature range

|                                 |                   |
|---------------------------------|-------------------|
| Ambient temperature (operation) | -40 °C ... 125 °C |
|---------------------------------|-------------------|

#### Dimensions

|                        |       |
|------------------------|-------|
| free solder pin length | 10 mm |
|------------------------|-------|

#### Data of the insulating body

|   |                      |
|---|----------------------|
| Coding                                    | N                    |
| Insulator material                        | PBT                  |
| Contact material                          | CuZn                 |
| Contact surface material                  | Ni/Au                |
| Contact connection method                 | Solder-in connection |
| Type of contacts                          | Male connector       |
| Number of positions                       | 17                   |
| Contact diameter of power contacts        | 1 mm                 |
| Nominal current per power contact at 25°C | 8 A                  |
| Nominal voltage, power contact            | 150 V                |
| Overvoltage category                      | II                   |

## Device connector, front mounting - CA-17P1NA22S00 - 1619917

### Technical data

#### Data of the insulating body

|                     |   |
|---------------------|---|
| Degree of pollution | 3 |
|---------------------|---|

#### Housing data

|  |                  |
|--|------------------|
| Housing material                       | CuZn             |
| Flange dimensions                      | 25 mm x 25 mm    |
| Type of locking                        | SPEEDCON locking |
| Degree of protection (when plugged in) | IP67             |
| Thread type                            | M23              |

### Classifications

#### eCl@ss

|            |          |
|------------|----------|
| eCl@ss 4.0 | 272607xx |
| eCl@ss 4.1 | 27260701 |
| eCl@ss 5.0 | 27143424 |
| eCl@ss 5.1 | 27143424 |
| eCl@ss 6.0 | 27143424 |
| eCl@ss 7.0 | 27440209 |
| eCl@ss 8.0 | 27440103 |

#### ETIM

|          |          |
|----------|----------|
| ETIM 3.0 | EC001121 |
| ETIM 4.0 | EC002635 |
| ETIM 5.0 | EC002061 |

#### UNSPSC

|               |          |
|---------------|----------|
| UNSPSC 6.01   | 43172015 |
| UNSPSC 7.0901 | 43201404 |
| UNSPSC 11     | 43172015 |
| UNSPSC 12.01  | 43201404 |
| UNSPSC 13.2   | 43201404 |

### Approvals

#### Approvals

---

#### Approvals

UL Recognized / cUL Recognized / EAC / cULus Recognized


## Device connector, front mounting - CA-17P1NA22S00 - 1619917


### Approvals

Ex Approvals


Approvals submitted

### Approval details

|   |       |
|---|-------|
| UL Recognized  |       |
| mm <sup>2</sup> /AWG/kcmil  | 18    |
| Nominal current I <sub>N</sub>  | 8 A   |
| Nominal voltage U <sub>N</sub>  | 150 V |

|  |       |
|--|-------|
| cUL Recognized  |       |
| mm <sup>2</sup> /AWG/kcmil   | 18    |
| Nominal current I <sub>N</sub>   | 5 A   |
| Nominal voltage U <sub>N</sub>   | 150 V |

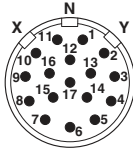
EAC

|  |  |
|--|--|
| cULus Recognized  |  |
|--|--|

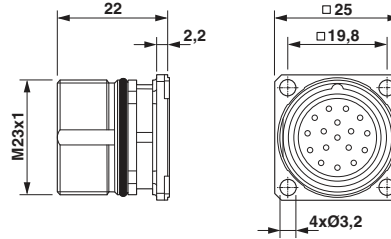
### Drawings

# Device connector, front mounting - CA-17P1NA22S00 - 1619917

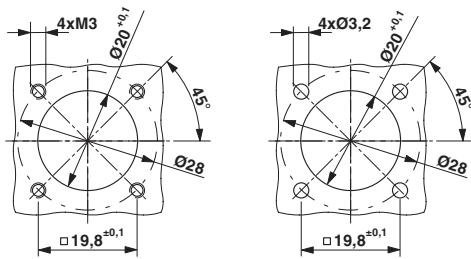
Schematic diagram



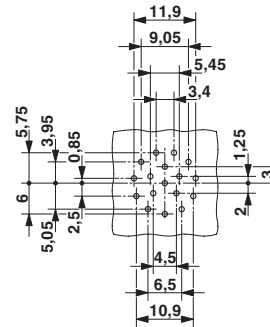
Dimensional drawing



Dimensional drawing



Drilling diagram



Installation dimensions

17-pos.