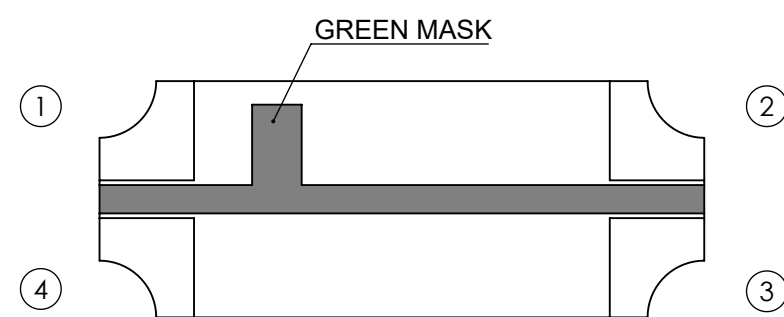
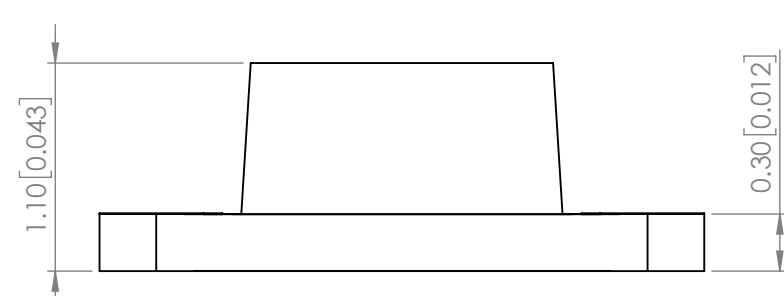
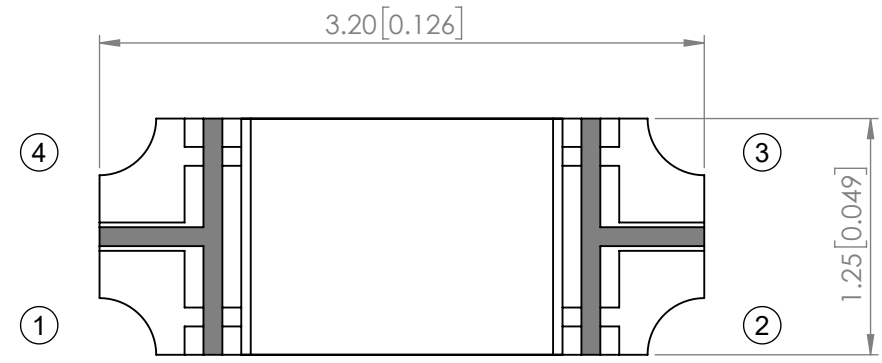
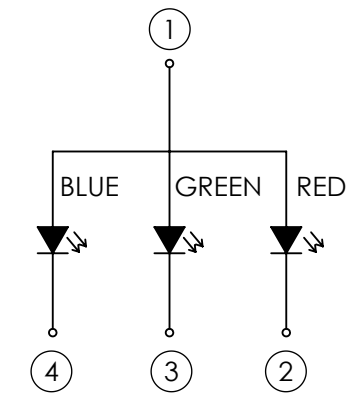


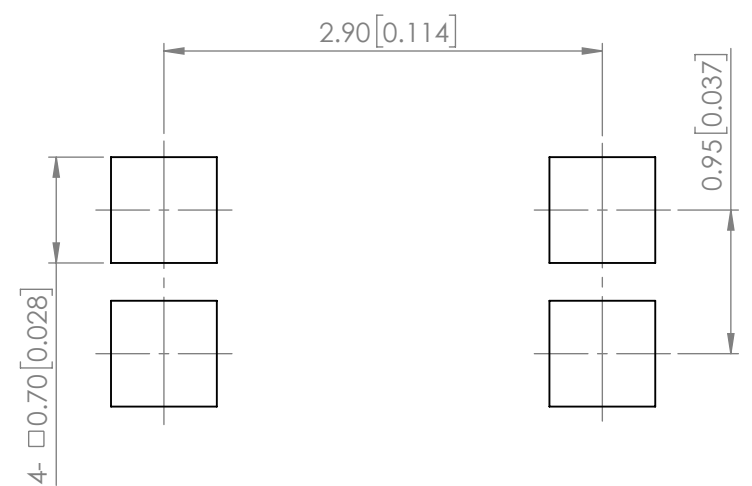
| | | | | |
|--------------------|--|--------------------|------------|-------------|
| PART NUMBER | | SML-LXRM1205RGBCTR | REV | B |
| REV | E.C.N. NUMBER AND REVISION COMMENTS | | | DATE |
| A | ECN-Lumex201900122 | | | 09.02.19 |
| B | ECN-Lumex202000068 | | | 04.30.20 |



POLARITY



RECOMMENDED SOLDER PAD LAYOUT



ELECTRO-OPTICAL CHARACTERISTIC TA=25°C

| PARAMETER | | MIN | TYP | MAX | UNITS | TEST COND |
|--------------------|--------------------|-----|-----|-----|-------------|-----------|
| PEAK WAVELENGTH | R | - | 630 | - | nm | If=20mA |
| | G | - | 520 | - | | |
| | B | - | 470 | - | | |
| FORWARD VOLTAGE | R | - | 2.0 | 2.4 | Vf | If=20mA |
| | G | - | 3.3 | 3.7 | | |
| | B | - | 3.3 | 3.7 | | |
| REVERSE CURRENT | R | - | - | 10 | uA | VR=5V |
| | G | - | - | 50 | | |
| | B | - | - | 50 | | |
| LUMINOUS INTENSITY | R | - | 100 | - | mcd | If=20mA |
| | G | - | 200 | - | | |
| | B | - | 65 | - | | |
| VIEWING ANGLE | | - | 130 | - | 2x theta1/2 | - |
| EMITTED COLOR | RED / GREEN / BLUE | | | | | |
| EPOXY LENS FINISH | WATER CLEAR | | | | | |

ABSOLUTE MAXIMUM RATINGS TA=25°C

| PARAMETER | MAX | UNITS |
|-------------------------------|------------------|-------|
| PEAK FORWARD CURRENT (R/G/B)* | 60 / 40 / 40 | mA |
| FORWARD CURRENT (R/G/B) | 25 / 20 / 20 | mA |
| REVERSE VOLTAGE | 5 | V |
| POWER DISSIPATION (R/G/B) | 60 / 95 / 95 | mW |
| STORAGE TEMPERATURE | -40 TO +90 | °C |
| OPERATING TEMPERATURE | -40 TO +85 | °C |
| SOLDERING TEMPERATURE | 3 SEC. MAX @ 260 | °C |

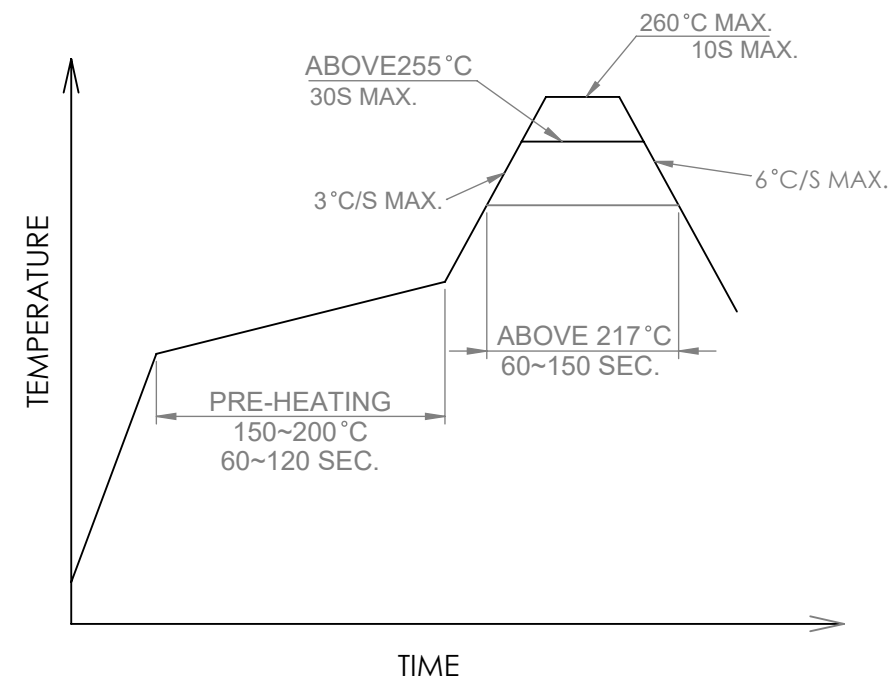
*1/10 duty, f=1kHz

MOISTURE SENSITIVE DEVICE
PER JEDEC LEVEL 3 STANDARDS

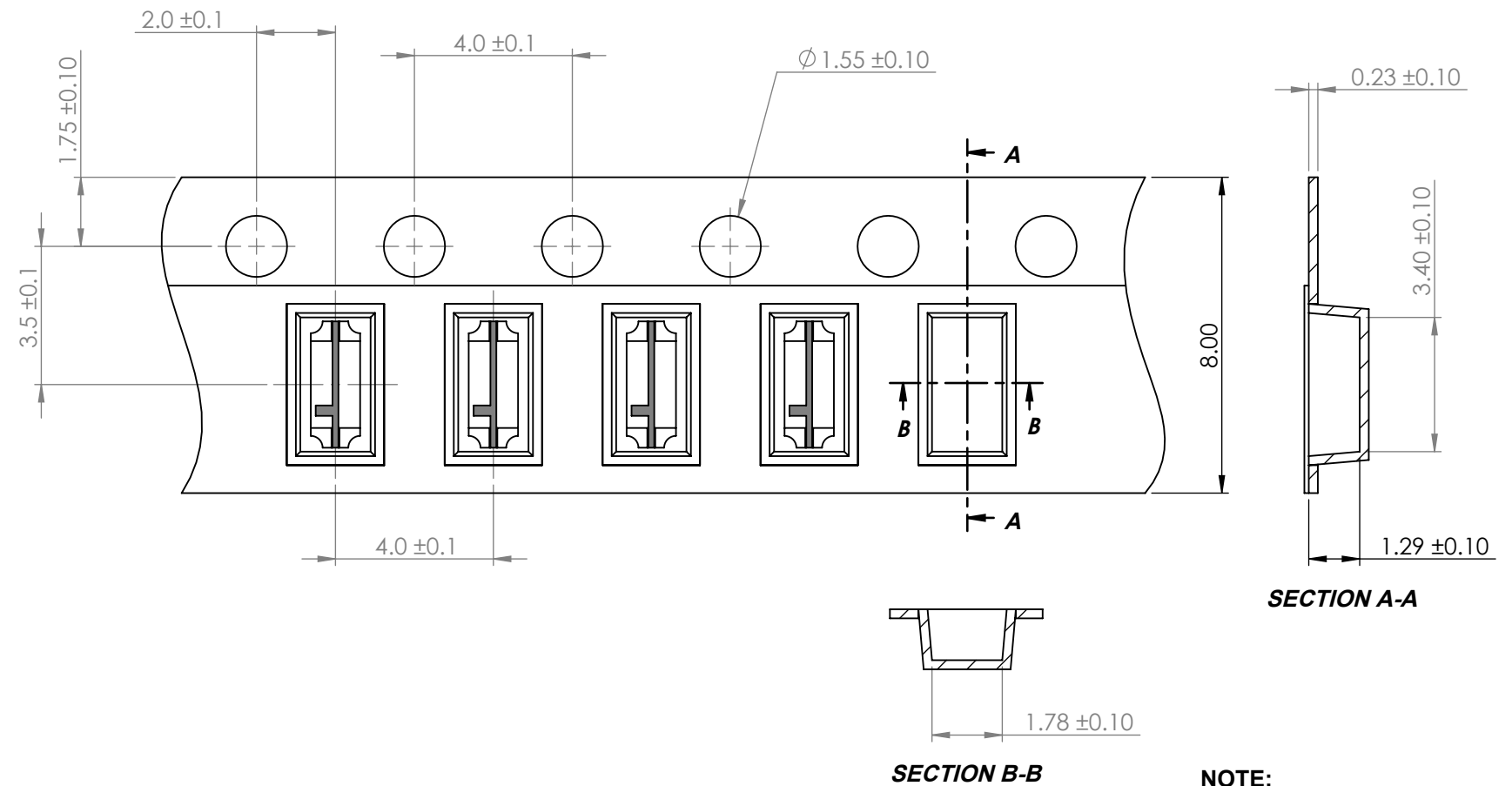
STATIC DEVICE FOLLOW PROPER
E.S.D. HANDLING PROCEDURES
WHEN WORKING WITH THIS PART

*UNLESS OTHERWISE SPECIFIED TOLERANCES PER DECIMAL PRECISION ARE: X=±1 (±0.039), X.X=±0.5 (±0.020), X.XX=±0.25 (±0.010), X.XXX=±0.127 (±0.005). LEAD SIZE=±0.05 (±0.002), LEAD LENGTH=±0.75 (±0.030). MIN= +DECIMAL PRECISION -0.00, MAX.= +0.00 -DECIMAL PRECISION

PROFILE



CARRIER TAPE DIMENSION



NOTE:
1. 2000 PCS/REEL

*UNLESS OTHERWISE SPECIFIED TOLERANCES PER DECIMAL PRECISION ARE: X=±1 (±0.039), X.X=±0.5 (±0.020), X.XX=±0.25 (±0.010), X.XXX=±0.127 (±0.005). LEAD SIZE=±0.05 (±0.002), LEAD LENGTH=±0.75 (±0.030). MIN= ^{+DECIMAL PRECISION}/_{-0.00} MAX= ^{+0.00}/_{-DECIMAL PRECISION}

| | | | | |
|--|--|-------------------|-----------------|--|
| <p>425 N. GARY AVE. CAROL STREAM, IL 60188 PHONE : 800-278-5666 FAX : 630-315-2150 WEB : WWW.LUMEX.COM</p> | 3.2(L)*1.25(W)*1.1(H)mm, SURFACE MOUNT LED, 630nm RED / 520nm GREEN / 470nm BLUE LED, WATER CLEAR LENS, TAPE & REEL, COMMON ANODE. | DATE : 2019.09.02 | DRAWN BY : C.S. | |
| | **THE SPECIFICATIONS MAY CHANGE AT ANY TIME WITHOUT NOTICE.** | PAGE : 2 OF 2 | CHKD BY : E.C. | |
| | CONFIDENTIAL INFORMATION | SCALE : NTF | APRVD BY : G.Y. | |
| | THE INFORMATION CONTAINED IN THIS DOCUMENT IS THE PROPERTY OF LUMEX INC. EXCEPT AS SPECIFICALLY AUTHORIZED IN WRITING BY LUMEX INC., THE HOLDER OF THIS DOCUMENT SHALL KEEP ALL INFORMATION CONTAINED HEREIN CONFIDENTIAL AND SHALL PROTECT SAME IN WHOLE OR IN PART FROM DISCLOSURE AND DISSEMINATION TO ALL THIRD PARTIES. | UNIT : mm [INCH] | | |