

MINI QUARTER TURN - SPRING LOADED



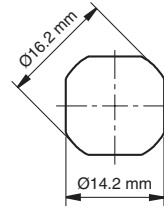
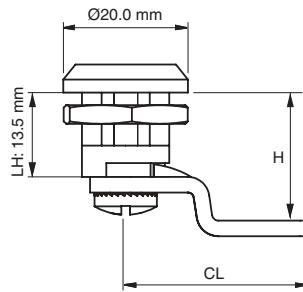
*Example with cam.
Cam sold separately.

Specifications

- Material:
Housing: Zinc Alloy (Zamak) DIN-EN 1774-ZnAl4Cu1 PA6 GFR 30
Driver: Zinc Alloy (Zamak) DIN-EN 1774-ZnAl4Cu1 or PA6 GFR 30
Knob: PA6 GFR 30
Cam: Steel or Plastic
Gasket: Rubber
Finish: Chrome

Features

- Specially designed internal spring provides 1 mm tactile resistance
- Sealing washer not supplied
- Applications: Electric panels, machinery covers



Cut Out

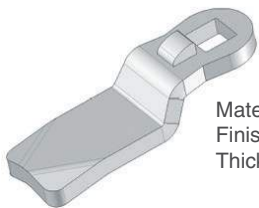
Driver/Head Style



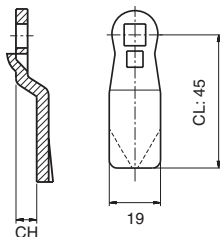
Slot (2x4)

Item Number	Zinc Alloy / Chrome	Zinc Alloy / Black	Driver / Head Style	Cam
066114200	066114200	066124200	Slot (2x4)	Select Cam Below

Steel Cam



Material: Steel
Finish: Zinc plated
Thickness: 4 mm



Item Number	CH (mm)	CL (mm)	H (mm)
30403084	0	33	13.5
30403184	0	25	13.5
30403183	6	25	19.5
30403085	7	30	20.5
30403196	-6	25	7.5