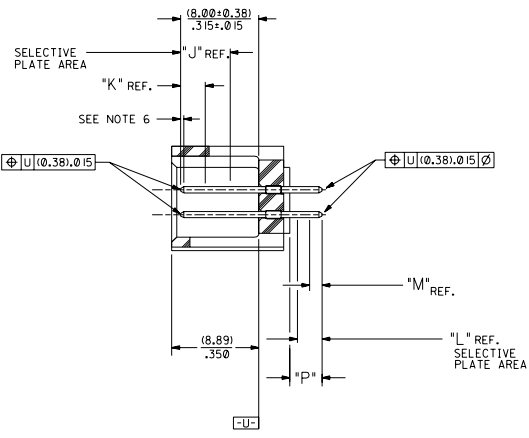
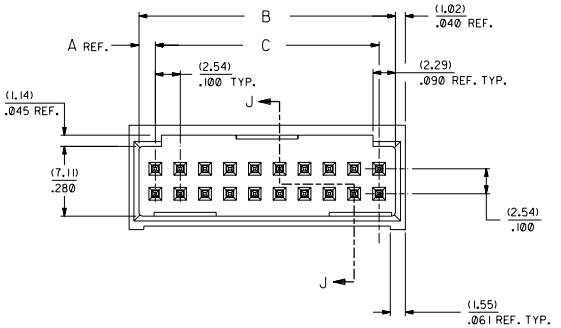
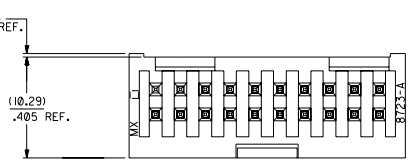
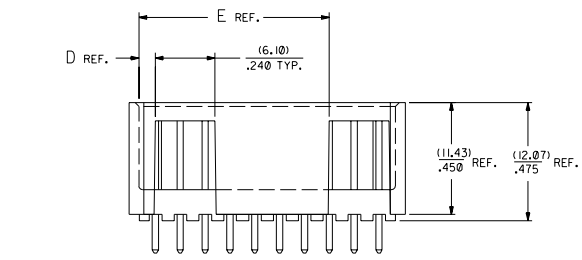


RECOMMENDED P.C. BOARD HOLE LAYOUT



SECTION J-J



NOTES:

- 1- 20 CIRCUIT SIZE SHOWN FOR ILLUSTRATION PURPOSES.
- 2- PIN PUSHOUT FORCE: (17.79 N) 1/4 LBS.
- 3- PINS MUST MEET SOLDERABILITY SPEC. MIL-STD-202 METHOD 208B.
- 4- WINDOW NOT AVAILABLE ON 6 AND 8 CIRCUIT SIZE.
- 5- FOR CHARTED DIMENSIONS AND ASSEMBLY NO.S NOT SHOWN ON THIS SHEET - SEE SHEET 2.
- 6- ROW TO ROW PIN HEIGHT VARIATION MUST NOT EXCEED (0.13) ± .005 IN.
- 7- PRODUCT CONFORMS TO PS-8723.

| CKT. | 8723 | | | | |
|------|----------------|------------------|------------------|-----------------|------------------|
| | DIM. 'A' | DIM. 'B' | DIM. 'C' | DIM. 'D' | DIM. 'E' |
| 06 | (1.68) .066 | (8.43) .332 | (5.08) .200 | (1.68) .066 | |
| 08 | (1.68) .066 | (10.97) .432 | (7.62) .300 | (1.68) .066 | |
| 10 | (1.68) .066 | (13.51) .532 | (10.16) .400 | (4.22) .166 | |
| 12 | (1.68) .066 | (16.05) .632 | (12.70) .500 | (4.22) .166 | |
| 14 | (1.68) .066 | (18.59) .732 | (15.24) .600 | (16.76) .266 | |
| 16 | (1.68) .066 | (21.13) .832 | (17.78) .700 | (16.76) .266 | |
| 18 | (1.68) .066 | (23.67) .932 | (20.32) .800 | (9.30) .366 | |
| 20 | (1.68) .066 | (26.21) 1.032 | (22.86) .900 | (1.68) .066 | (19.46) .766 |
| 22 | (1.68) .066 | (28.75) 1.132 | (25.40) 1.000 | (1.68) .066 | (22.00) .866 |
| 24 | (1.68) .066 | (31.29) 1.232 | (27.94) 1.100 | (1.68) .066 | (24.54) .966 |
| 26 | (1.68) .066 | (33.83) 1.332 | (30.48) 1.200 | (1.68) .066 | (27.08) 1.066 |
| 28 | (1.68) .066 | (36.37) 1.432 | (33.02) 1.300 | (1.68) .066 | (29.62) 1.166 |
| 30 | (1.68) .066 | (38.91) 1.532 | (35.56) 1.400 | (1.68) .066 | (32.16) 1.266 |
| 32 | (1.68) .066 | (41.45) 1.632 | (38.10) 1.500 | (1.68) .066 | (34.70) 1.366 |
| 34 | (1.68) .066 | (43.99) 1.732 | (40.64) 1.600 | (1.68) .066 | (37.24) 1.466 |
| 36 | (1.68) .066 | (46.53) 1.832 | (43.18) 1.700 | (1.68) .066 | (39.78) 1.566 |
| 38 | (1.68) .066 | (49.07) 1.932 | (45.72) 1.800 | (1.68) .066 | (42.32) 1.666 |
| 40 | (1.68) .066 | (51.61) 2.032 | (48.26) 1.900 | (1.68) .066 | (44.86) 1.766 |
| 42 | (1.68) .066 | (54.15) 2.132 | (50.80) 2.000 | (1.68) .066 | (47.40) 1.866 |
| 44 | (1.68) .066 | (56.69) 2.232 | (53.34) 2.100 | (1.68) .066 | (49.94) 1.966 |
| 46 | (1.68) .066 | (59.23) 2.332 | (55.88) 2.200 | (1.68) .066 | (52.48) 2.066 |
| 48 | (1.68) .066 | (61.77) 2.432 | (58.42) 2.300 | (1.68) .066 | (55.02) 2.166 |
| 50 | (1.68) .066 | (64.31) 2.532 | (60.96) 2.400 | (1.68) .066 | (57.56) 2.266 |
| 52 | (1.68) .066 | (66.85) 2.632 | (63.50) 2.500 | (1.68) .066 | (60.10) 2.366 |
| 54 | (1.68) .066 | (69.39) 2.732 | (66.04) 2.600 | (1.68) .066 | (62.64) 2.466 |
| 56 | (1.68) .066 | (71.93) 2.832 | (68.58) 2.700 | (1.68) .066 | (65.18) 2.566 |
| 58 | (1.68) .066 | (74.47) 2.932 | (71.12) 2.800 | (1.68) .066 | (67.72) 2.666 |
| 60 | (1.68) .066 | (77.01) 3.032 | (73.66) 2.900 | (1.68) .066 | (70.26) 2.766 |
| 62 | (1.68) .066 | (79.55) 3.132 | (76.20) 3.000 | (1.68) .066 | (72.80) 2.866 |
| 64 | (1.68) .066 | (82.09) 3.232 | (78.74) 3.100 | (1.68) .066 | (75.34) 2.966 |
| 66 | (1.68) .066 | (84.63) 3.332 | (81.28) 3.200 | (1.68) .066 | (77.88) 3.066 |
| 68 | (1.68) .066 | (87.17) 3.432 | (83.82) 3.300 | (1.68) .066 | (80.42) 3.166 |
| 70 | (1.68) .066 | (89.71) 3.532 | (86.36) 3.400 | (1.68) .066 | (82.96) 3.266 |
| 72 | (1.68) .066 | (92.25) 3.632 | (88.90) 3.500 | (1.68) .066 | (85.50) 3.366 |

MATERIAL:

SHROUDED WAFER: GLASS FILLED POLYESTER, 94V-0; COLOR: BLACK.
PINS: PHOSPHOR BRONZE,
SEE SHEET 2 FOR FINISHES.

ASSEMBLY STYLE "A" AND "B"

| | | | | | |
|---|----|----------|------|------|-----------|
| 7 | U | MFG. SH. | REV. | LTR. | REVISIONS |
| 6 | T | | | | |
| 5 | R2 | | | | |
| 4 | T | | | | |
| 3 | R2 | | | | |
| 2 | T | | | | |
| 1 | U | | | | |

DIMENSIONS SHOWN METRIC INCH
 UNLESS OTHERWISE SPECIFIED
 1 P.L.K. ± .005
 2 P.L.K. ± .01 ± 0.13
 3 P.L.K. ± .025
 DIMENSIONS APPLICABLE MUST BEADY WITH DIMENSIONS
 DIMENSIONS SHOWN METRIC INCH UNLESS OTHERWISE SPECIFIED
 UNLESS OTHERWISE SPECIFIED
 1 P.L.K. ± .005
 2 P.L.K. ± .01 ± 0.13
 3 P.L.K. ± .025
 DIMENSIONS APPLICABLE MUST BEADY WITH DIMENSIONS
 DIMENSIONS SHOWN METRIC INCH UNLESS OTHERWISE SPECIFIED
 UNLESS OTHERWISE SPECIFIED
 1 P.L.K. ± .005
 2 P.L.K. ± .01 ± 0.13
 3 P.L.K. ± .025
 DIMENSIONS APPLICABLE MUST BEADY WITH DIMENSIONS

TITLE SALES ASSEMBLY
 WAFER - STRAIGHT MT. FULLY SHROUDED
 .1000 GRID - FOR USE W/ .0025 SQ. PINS
 WITH .066 END WALLS
 MOLEX INCORPORATED
 SEE CHART SDA-8723-*****
 DATE 1 OF 7 92/07/17
 FILE NO. 58723A11
 SCALE 4:1
 DATE 10/23/92
 DESIGNED BY RB
 CHECKED BY
 DRAWN BY
 APPROVED BY

- U ADD -3803 OPT
DCP-2804-2268
DMORGAN 84/05/20
- T LEAD FREE
USP2804-179
RW WHITE 84/04/26
- S ADD -3802 OPTION
ECP - 2804-102
DMORGAN 84/01/2
- R2 TAB DIF DIM 6 CIR
ECP - 2804-102
DMORGAN 58/09/01
- R1 ADD WDG LATCH NOTE
ECP - 2804-102
DMORGAN 58/06/23
- R REMOVE FOP NO.S
PER ECR NO US8225
85-04-33
- O REMOVE FOP NO.S
PER ECR NO US8225
85-04-33
- P CHGD WINDOW NOTES
PER ECR NO US39316
85-04-33
- O CHANGED MATERIAL
PER ECR NO US3946
85-04-33
- R2 REVISED A REDRAWN
PER ECR NO US2873
85-04-33
- N LTR REVISIONS

