

MATERIALS AND FINISHES

BODY: ZINC ALLOY
PLATED NICKEL

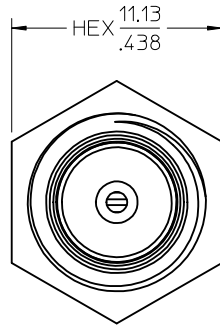
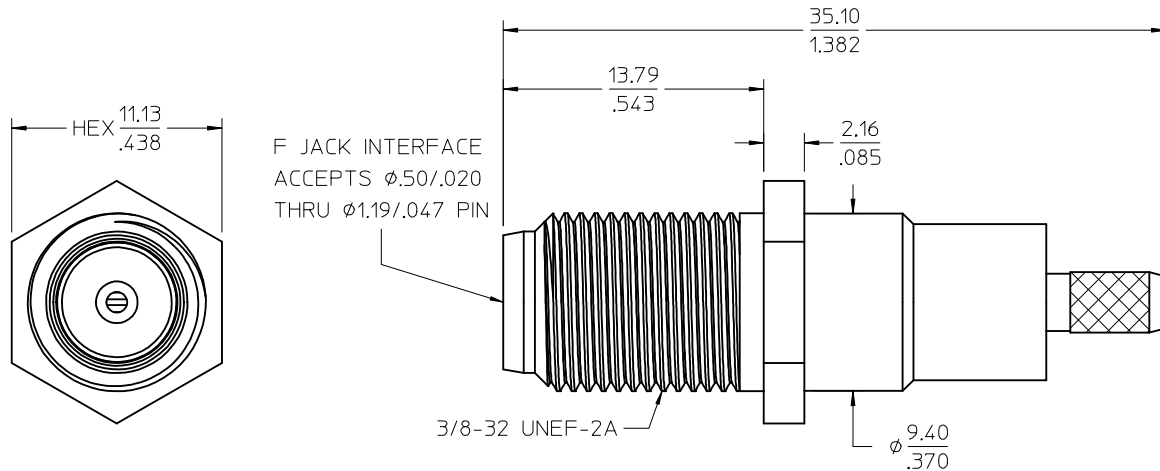
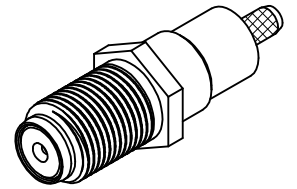
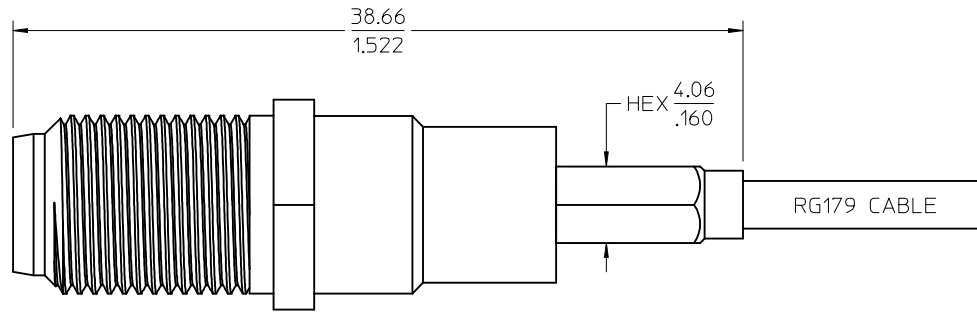
CRIMP TUBE, JAM NUT: BRASS
PLATED NICKEL

CENTER CONTACT: PHOSPHOR BRONZE
PLATED TIN

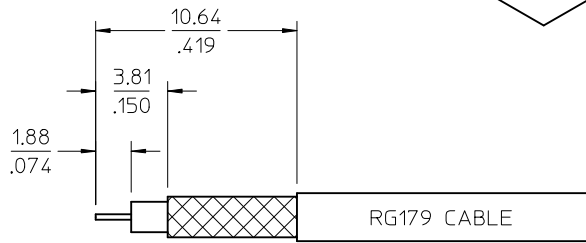
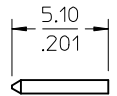
CABLE CONTACT: BRASS
PLATED TIN

INSULATOR: POLYPROPYLENE, TEFLON

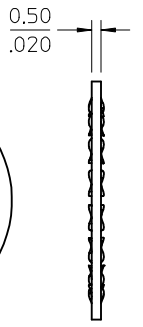
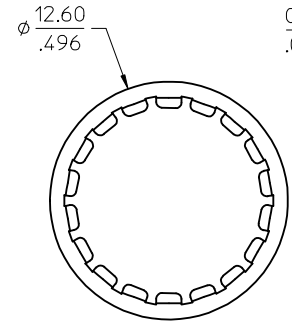
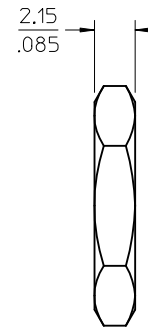
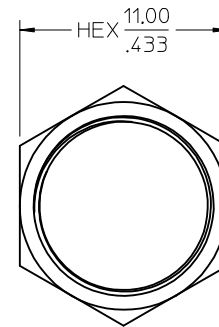
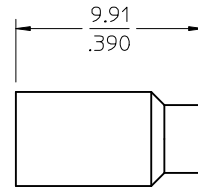
LOCK WASHER: PHOSPHOR BRONZE
PLATED NICKEL



F JACK INTERFACE
ACCEPTS ϕ .50/.020
THRU ϕ 1.19/.047 PIN



RECOMMENDED STRIP DIMENSION



73356-0180	BULK	
PART NO	PACKAGING	
AS-89678-3400		CABLE ASSEMBLY INSTRU
PS-89675-1710		ELEC/MECH PERFORMANCE
SPECIFICATION		DESCRIPTION

CHG: UPDATED VIEWS PER RF14-E031	EC NO: URF2014-0120	2013/10/04	2013/10/23
DRW:RWYEH	CHKD:	APPR:MHUANG	DESCRIPTION
A5			

QUALITY SYMBOLS	GENERAL TOLERANCES (UNLESS SPECIFIED)
$\nabla=0$	mm INCH
$\nabla=0$	4 PLACES \pm --- \pm ---
$\nabla=0$	3 PLACES \pm --- \pm ---
	2 PLACES \pm --- \pm ---
	1 PLACE \pm --- \pm ---
	0 PLACE \pm \pm
	ANGULAR $\pm 2^\circ$
	DRAFT WHERE APPLICABLE MUST REMAIN WITHIN DIMENSIONS

DIMENSION STYLE	SCALE	DESIGN UNITS	THIRD ANGLE PROJECTION
MM/IN	5:1	METRIC	
DRAWN BY	DATE	TITLE	
SSS	2000/08/18	F JACK STR BKHD	
CHECKED BY	DATE	W/O D-FLAT FOR RG179	
TEF	2000/08/18	F-J/CABLE	
APPROVED BY	DATE	molex	
GMH	2000/08/18	DOCUMENT NO.	SHEET NO.
		SEE TABLE	SD-73356-018
			1 OF 1

THIS DRAWING CONTAINS INFORMATION THAT IS PROPRIETARY TO MOLEX INCORPORATED AND SHOULD NOT BE USED WITHOUT WRITTEN PERMISSION