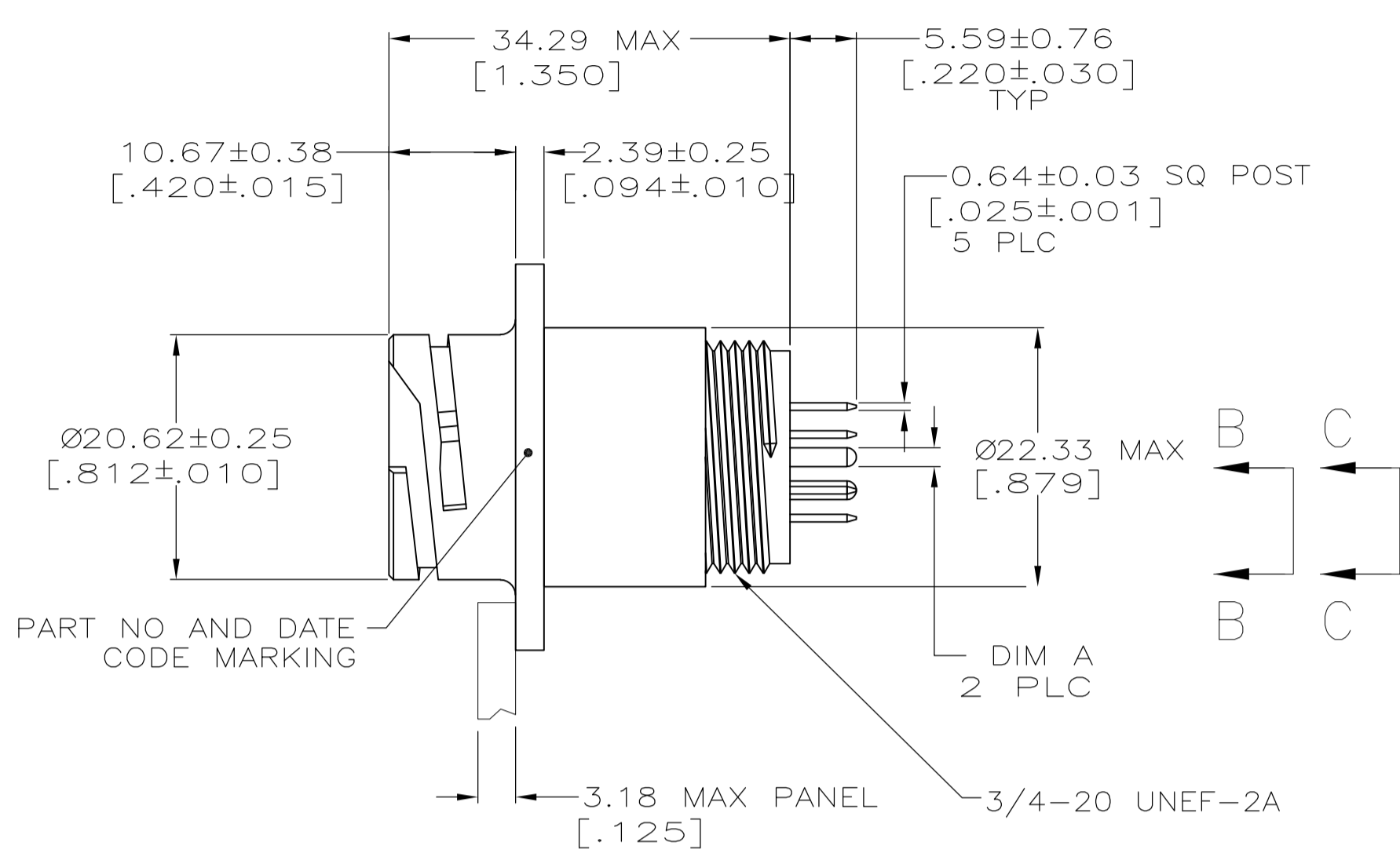
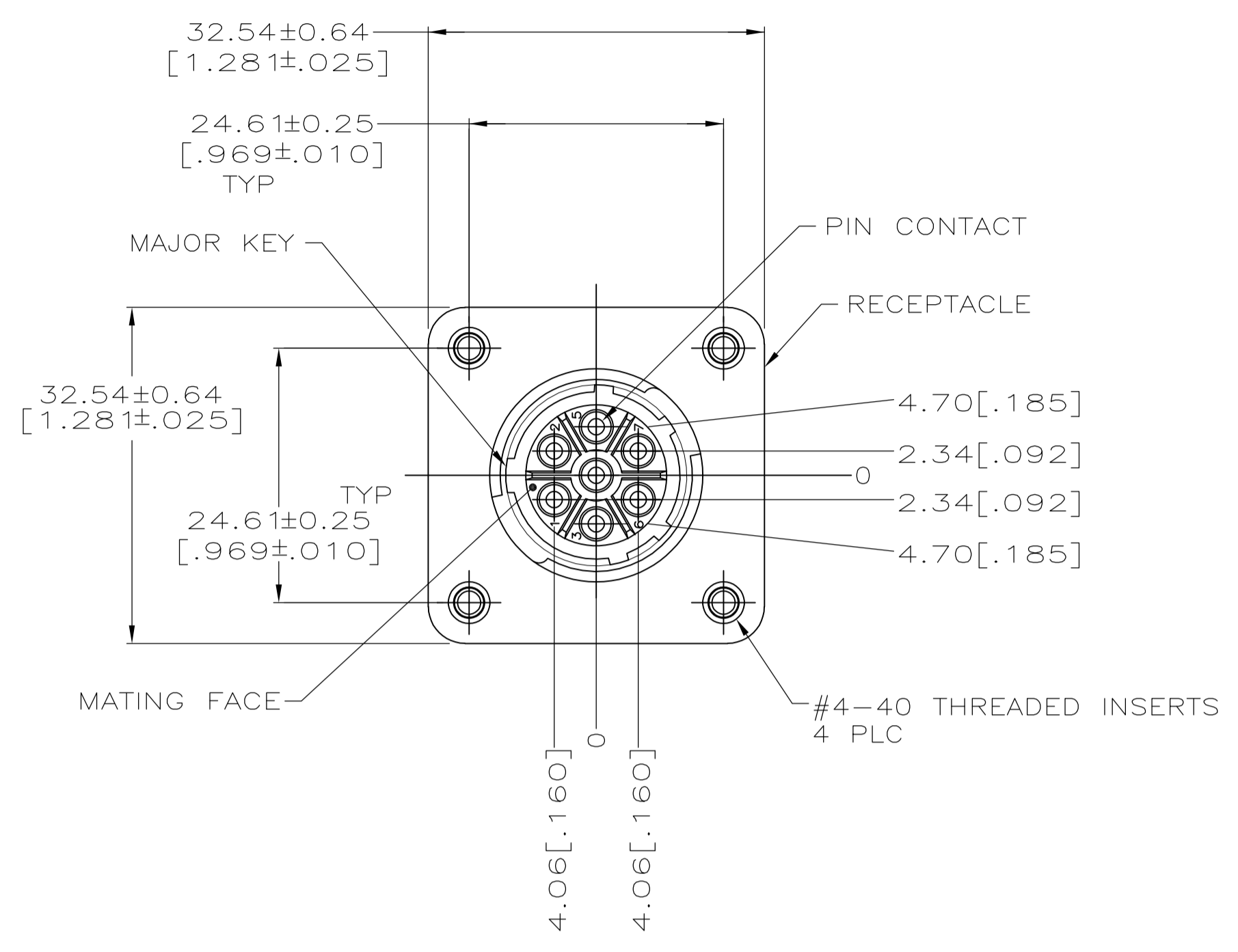
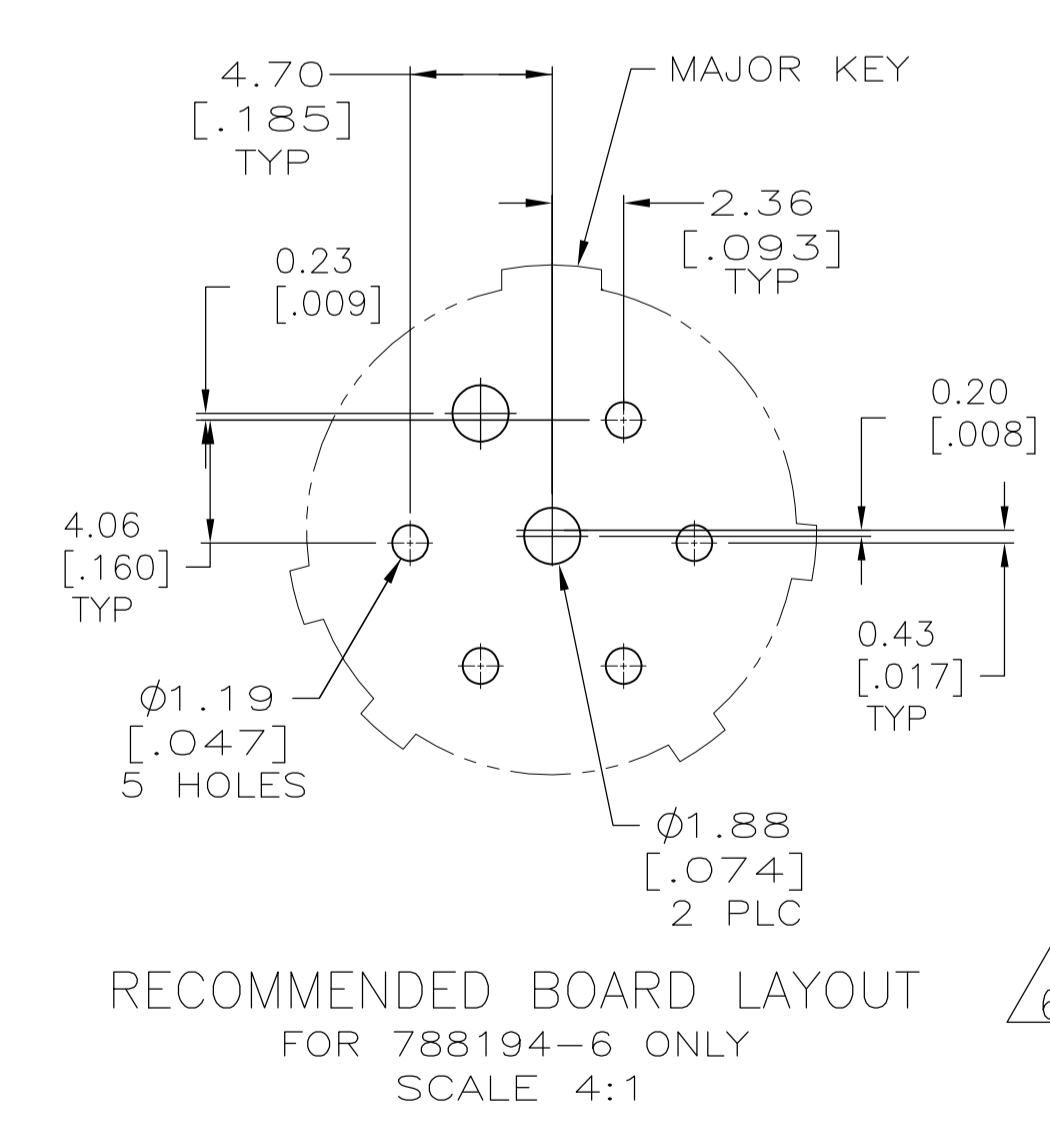
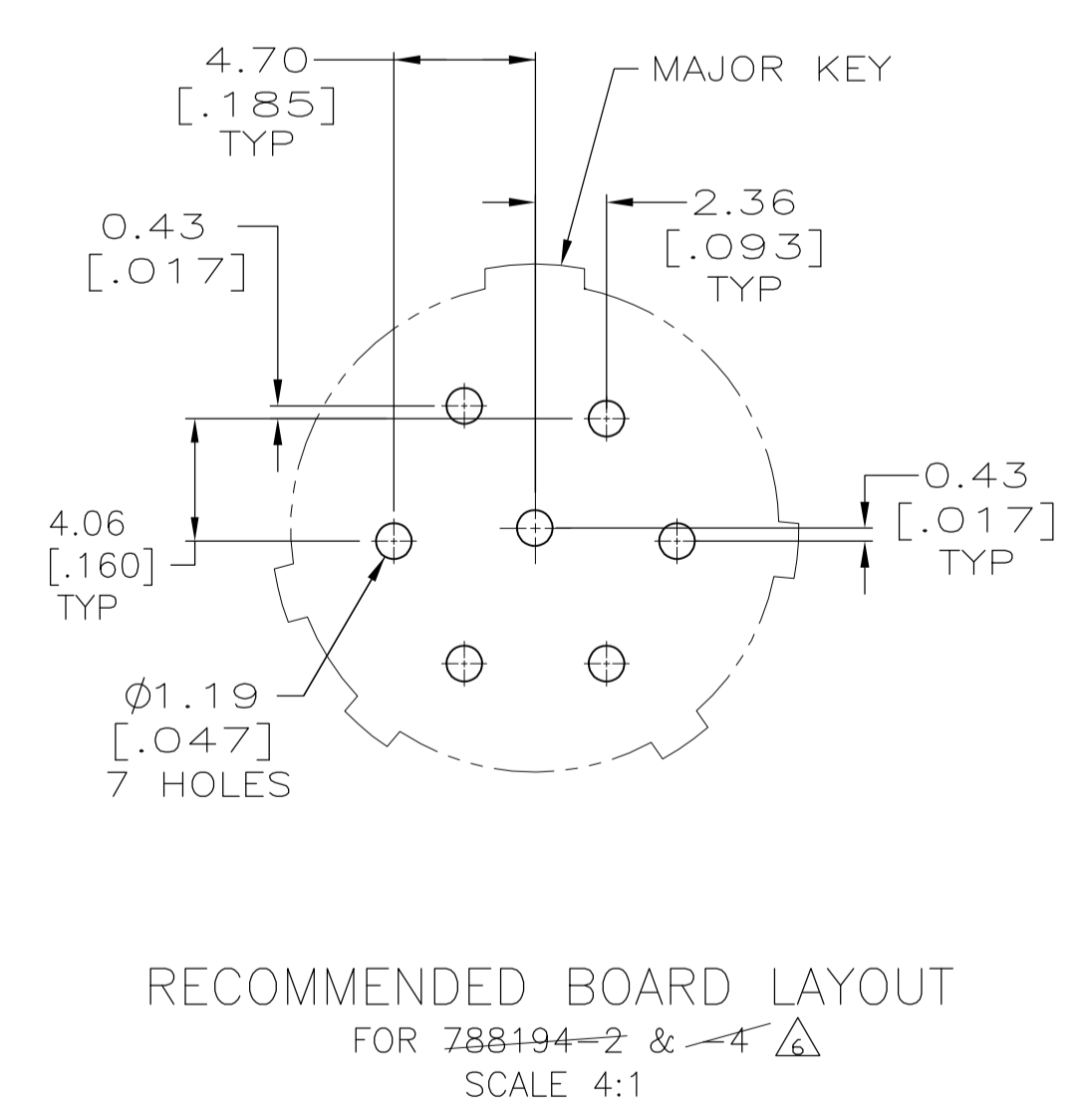
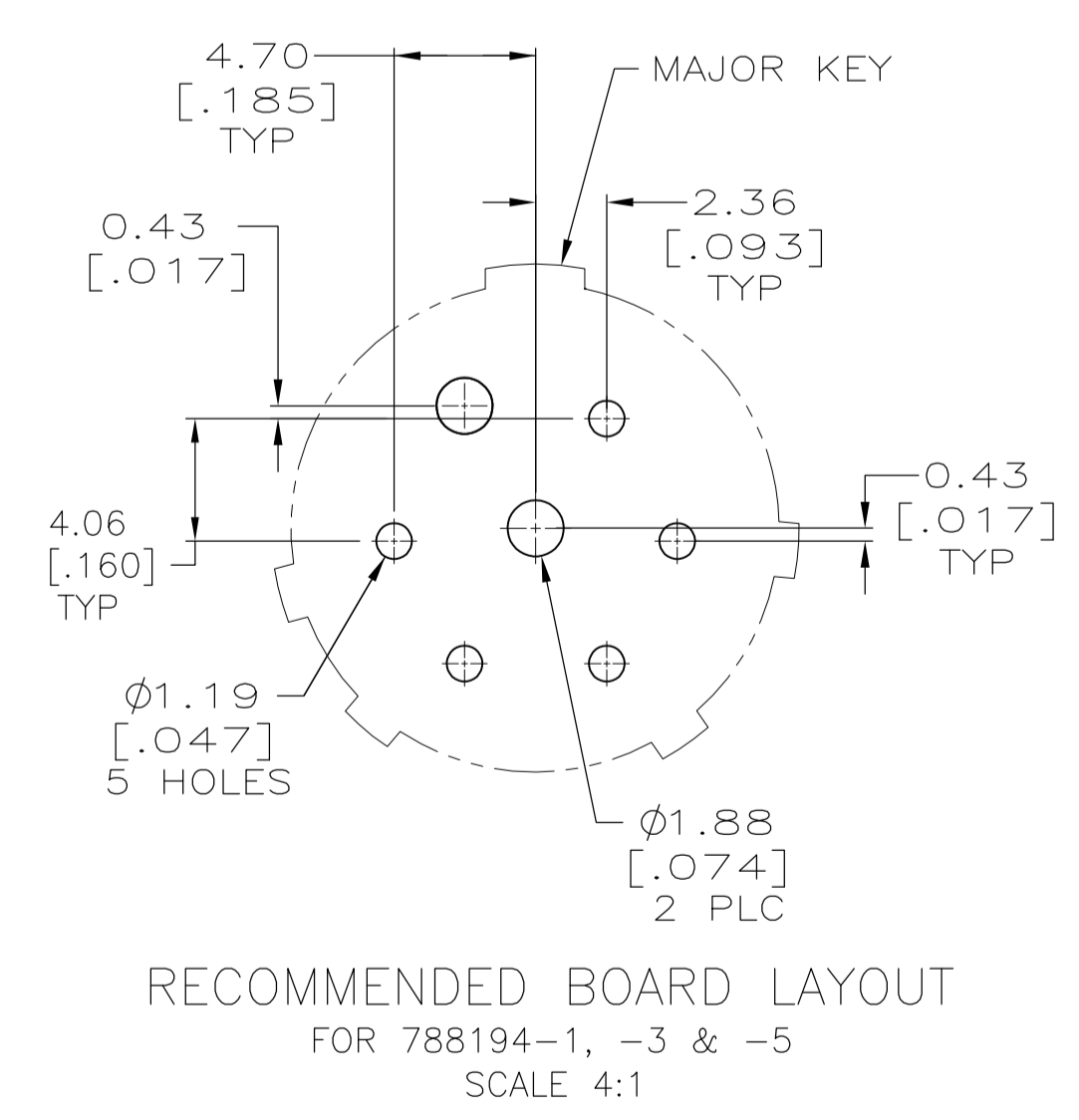
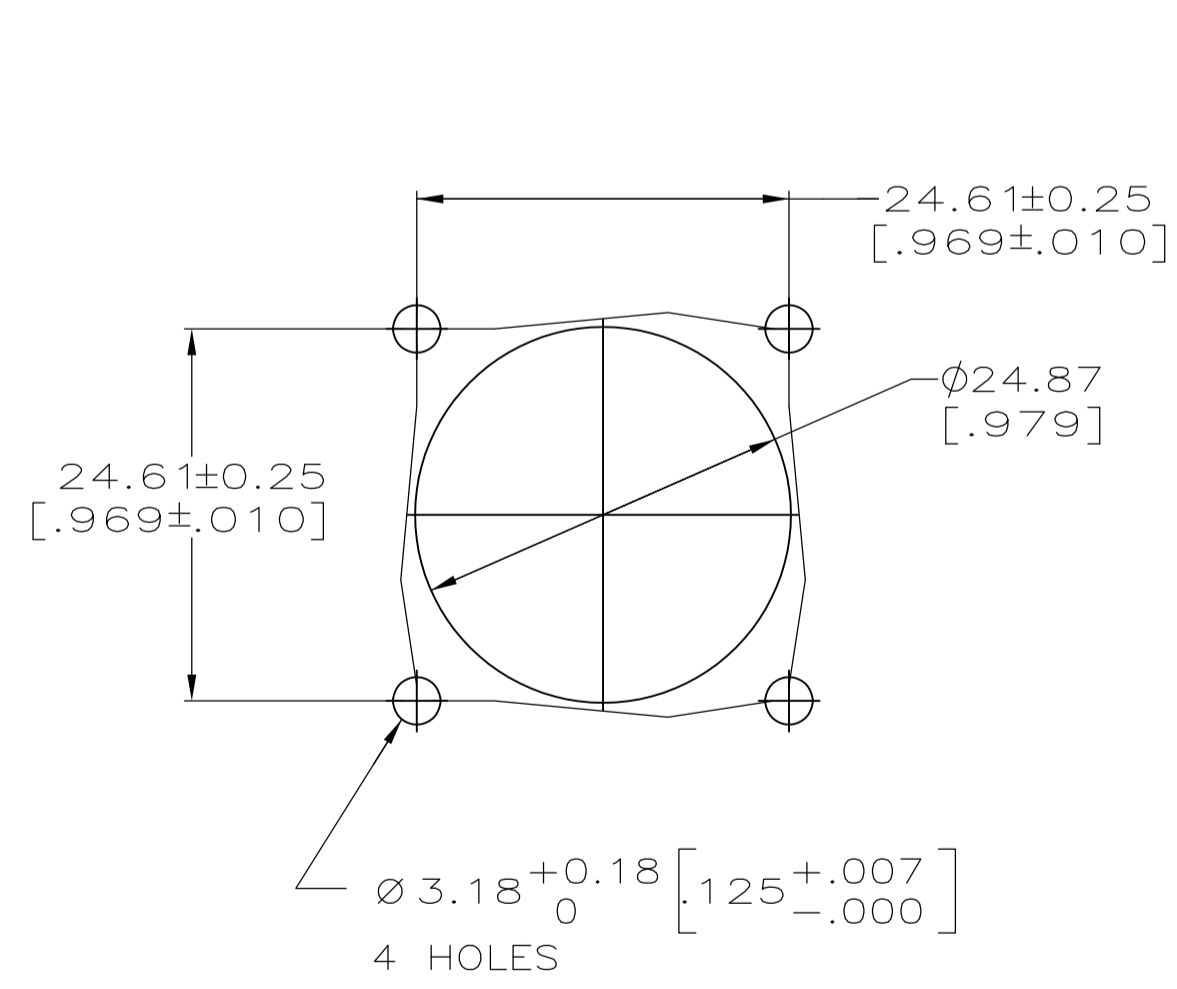
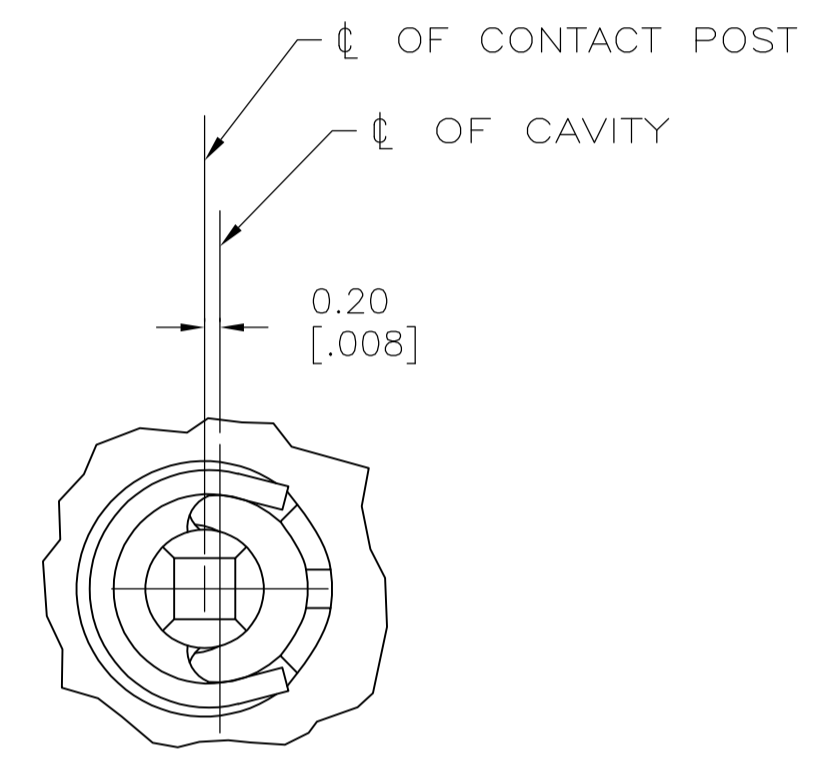
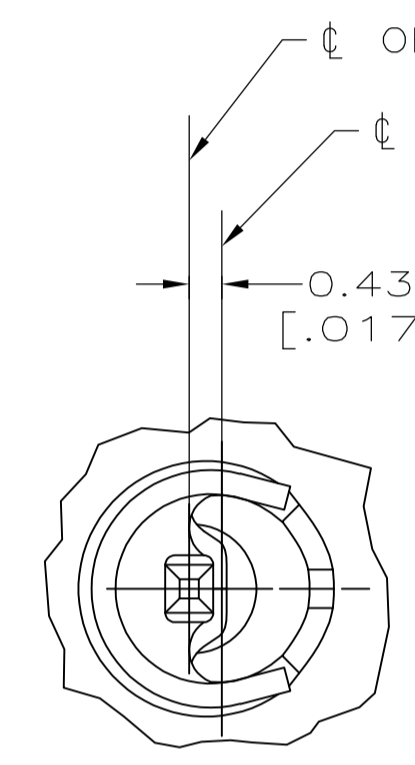


REVISIONS					
P	LTR	DESCRIPTION	DATE	DMN	APVD
C		REVISED PER ECO-06-25468	11/08/06	SS	SH
C1		REVISED PER ECO-09-022908	08OCT09	KK	AEG
D		REVISED PER ECO-16-018356	22MAR2017	RS	MZ



- CAVITY IDENTIFICATION ON FRONT AND REAR FACE.
- RECEPTACLE: NYLON, UL 94V-0 RATED, BLACK.
PIN CONTACT WITH 0.64 [.025] SQ POST: BRASS.
PIN CONTACT WITH Ø1.57 [.062] POST: COPPER ALLOY.
SPRING: STAINLESS STEEL.
INSERTS: BRASS.
- PIN CONTACT WITH SQ POST:
CONTACT: 0.76µm [.000030] MIN GOLD FOR A DISTANCE OF 6.35 [.250] FROM MATING END, ALL OVER 1.27µm [.000050] MIN NICKEL.
POST: 2.54µm [.000100] MIN TIN-LEAD OVER 1.27µm [.000050] MIN NICKEL.
- PIN CONTACT WITH Ø1.57 [.062] POST: 5.08µm [.000200] MIN SILVER ALL OVER 1.27µm [.000050] MIN NICKEL.
- PIN CONTACT WITH SQ POST:
CONTACT: 0.76µm [.000030] MIN GOLD FOR A DISTANCE OF 6.35 [.250] FROM MATING END, ALL OVER 1.27µm [.000050] MIN NICKEL.
POST: 2.54µm [.000100] MIN TIN OVER 1.27µm [.000050] MIN NICKEL.
- OBsolete PARTS: OBsolete CIS STREAMLINING PER D.RENAUD/D.SINISI



	.062 DIA.	2/5	788194-6
OBsolete	.045 SQ	2/5	788194-5
OBsolete	.025 DIA.	2/5	788194-4
	.062 DIA.	2/4/5	788194-3
OBsolete	.025 SQ	2/3	788194-2
OBsolete	.062 DIA.	2/3/4	788194-1
	DIM A	PIN CONTACT	PART NUMBER

DIMENSIONS:		TOLERANCES UNLESS OTHERWISE SPECIFIED:		MATERIAL:		FINISH:		WEIGHT:		CUSTOMER DRAWING:	
mm	[INCHES]	0 PLC	± -	28-MAR-2000	28-MAR-2000	28-MAR-2000	28-MAR-2000	28-MAR-2000	28-MAR-2000	28-MAR-2000	28-MAR-2000
1 PLC	± -	2 PLC	± -	28-MAR-2000	28-MAR-2000	28-MAR-2000	28-MAR-2000	28-MAR-2000	28-MAR-2000	28-MAR-2000	28-MAR-2000
2 PLC	± -	3 PLC	± 0.13 [.005]	28-MAR-2000	28-MAR-2000	28-MAR-2000	28-MAR-2000	28-MAR-2000	28-MAR-2000	28-MAR-2000	28-MAR-2000
3 PLC	± -	4 PLC	± -	28-MAR-2000	28-MAR-2000	28-MAR-2000	28-MAR-2000	28-MAR-2000	28-MAR-2000	28-MAR-2000	28-MAR-2000
4 PLC	± -	ANGLES	± -	28-MAR-2000	28-MAR-2000	28-MAR-2000	28-MAR-2000	28-MAR-2000	28-MAR-2000	28-MAR-2000	28-MAR-2000