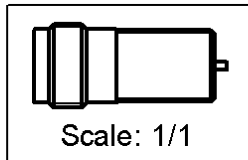
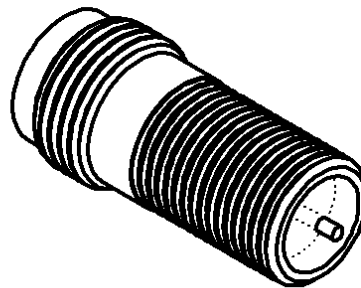
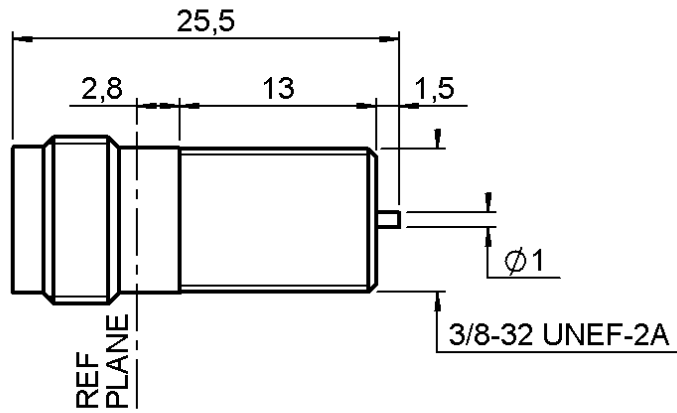


SCREW ON JACK RECEPTACLE
HERMETIC - WITH CYLINDRICAL CONTACT

R143.608.000

Series : TNC



All dimensions are in mm.



COMPONENTS	MATERIALS	PLATINGS (µm)
BODY	FERRO-NICKEL	GOLD 0.5 OVER NICKEL 2
CENTER CONTACT	BERYLLIUM COPPER, NICKEL STEEL	GOLD 0.5 OVER NICKEL 2
OUTER CONTACT	-	-
INSULATOR	PTFE	-
GASKET	-	-
OTHERS PARTS	-	-
-	-	-
-	-	-

Issue : 0105 C

In the effort to improve our products, we reserve the right to make changes judged to be necessary.



SCREW ON JACK RECEPTACLE
HERMETIC - WITH CYLINDRICAL CONTACT

R143.608.000

Series : TNC

PACKAGING

SPECIFICATION

Standard	Unit	Other
100	'W' option	Contact us

ELECTRICAL CHARACTERISTICS

Impedance		50 Ω
Frequency		0-11 GHz
VSWR	1.20 +	0.000 x F(GHz) Maxi
Insertion loss		0.07 √F(GHz) dB Maxi
RF leakage	- (57 - F(GHz)) dB Maxi
Voltage rating		500 Veff Maxi
Dielectric withstanding voltage		1500 Veff mini
Insulation resistance		5000 MΩ mini

ENVIRONMENTAL

Operating temperature	-65/+100 °C
Hermetic seal	10-6 Atm.cm ³ /s
Panel leakage	NA

OTHERS CHARACTERISTICS

Assembly instruction **NA**

Others :

MECHANICAL CHARACTERISTICS

Center contact retention		
Axial force – Mating end	18	N mini
Axial force – Opposite end	18	N mini
Torque	2.8	N.cm mini
Recommended torque		
Mating	NA	N.cm
Panel nut	NA	N.cm
Mating life	500	Cycles mini
Weight	0.000	g

Issue : 0105 C

In the effort to improve our products, we reserve the right to make changes judged to be necessary.



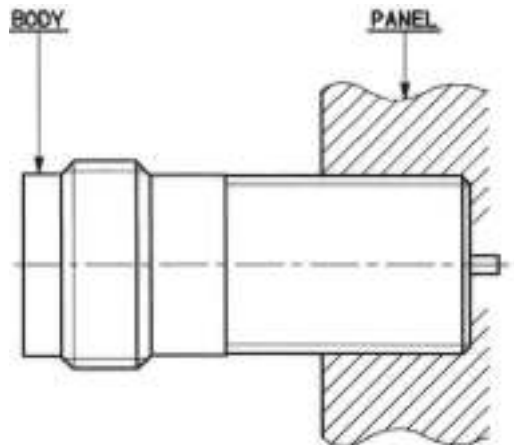
SCREW ON JACK RECEPTACLE
HERMETIC - WITH CYLINDRICAL CONTACT

R143.608.000

Series : TNC

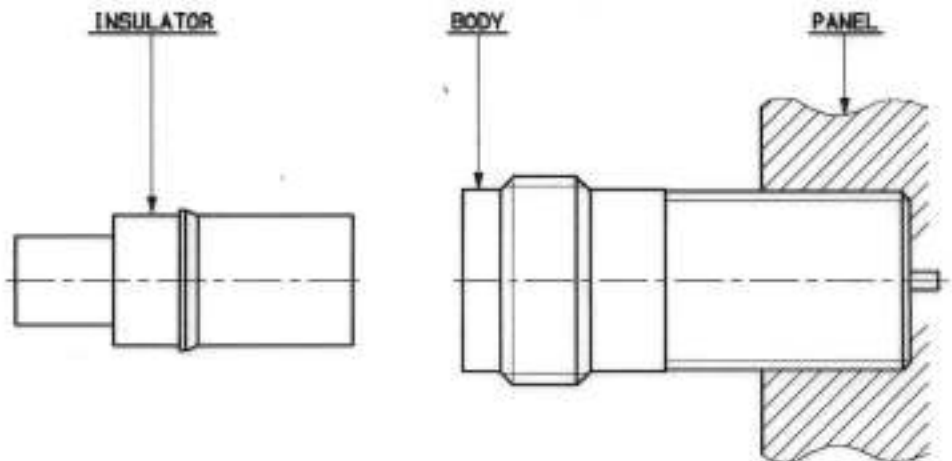
1

- Screw the conector into the panel.
- Solder with tin



2

- Place the insulator-centre contact into the body with the teflon insertion tool : R282 730 100



Issue : 0105 C

In the effort to improve our products, we reserve the right to make changes judged to be necessary.

