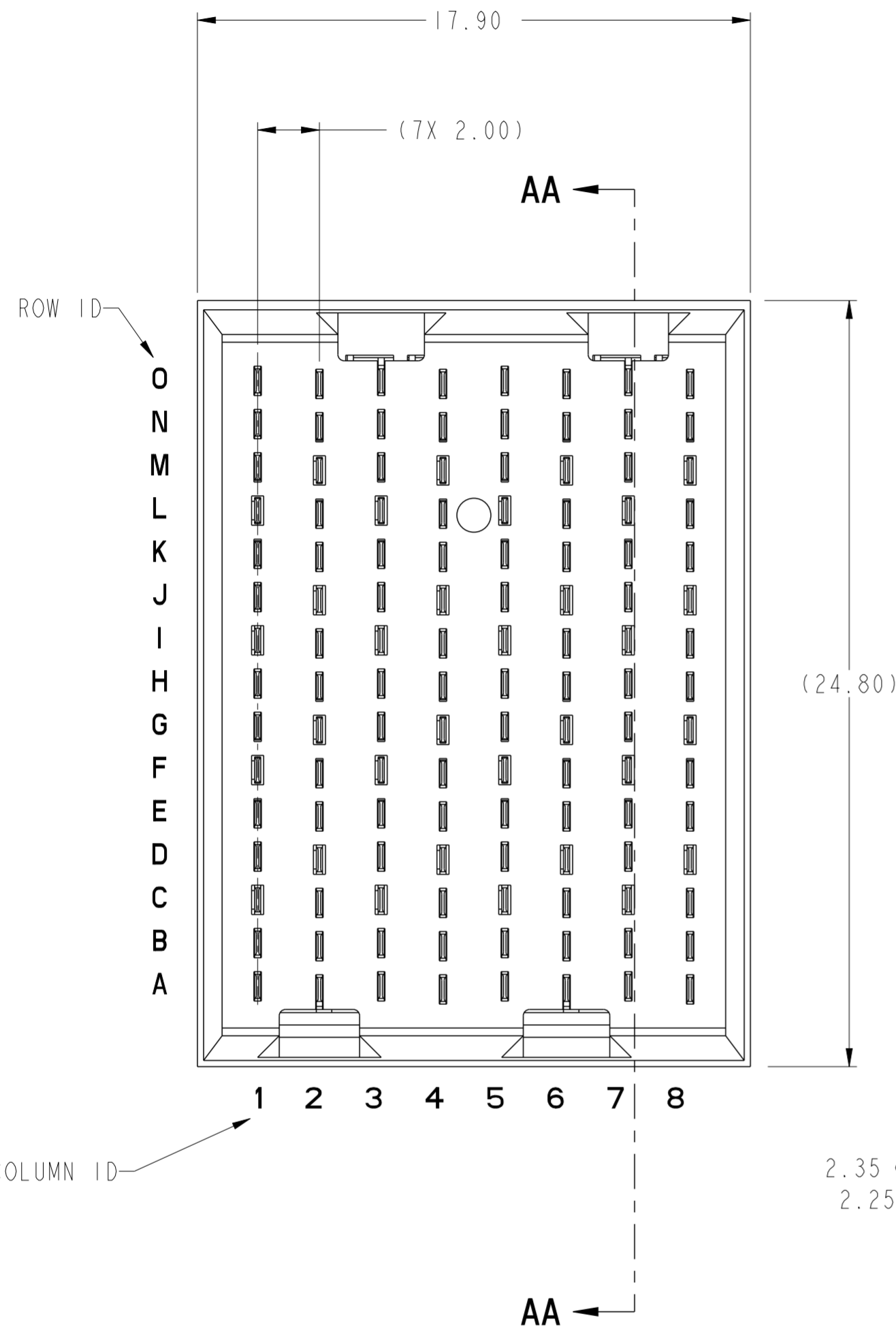
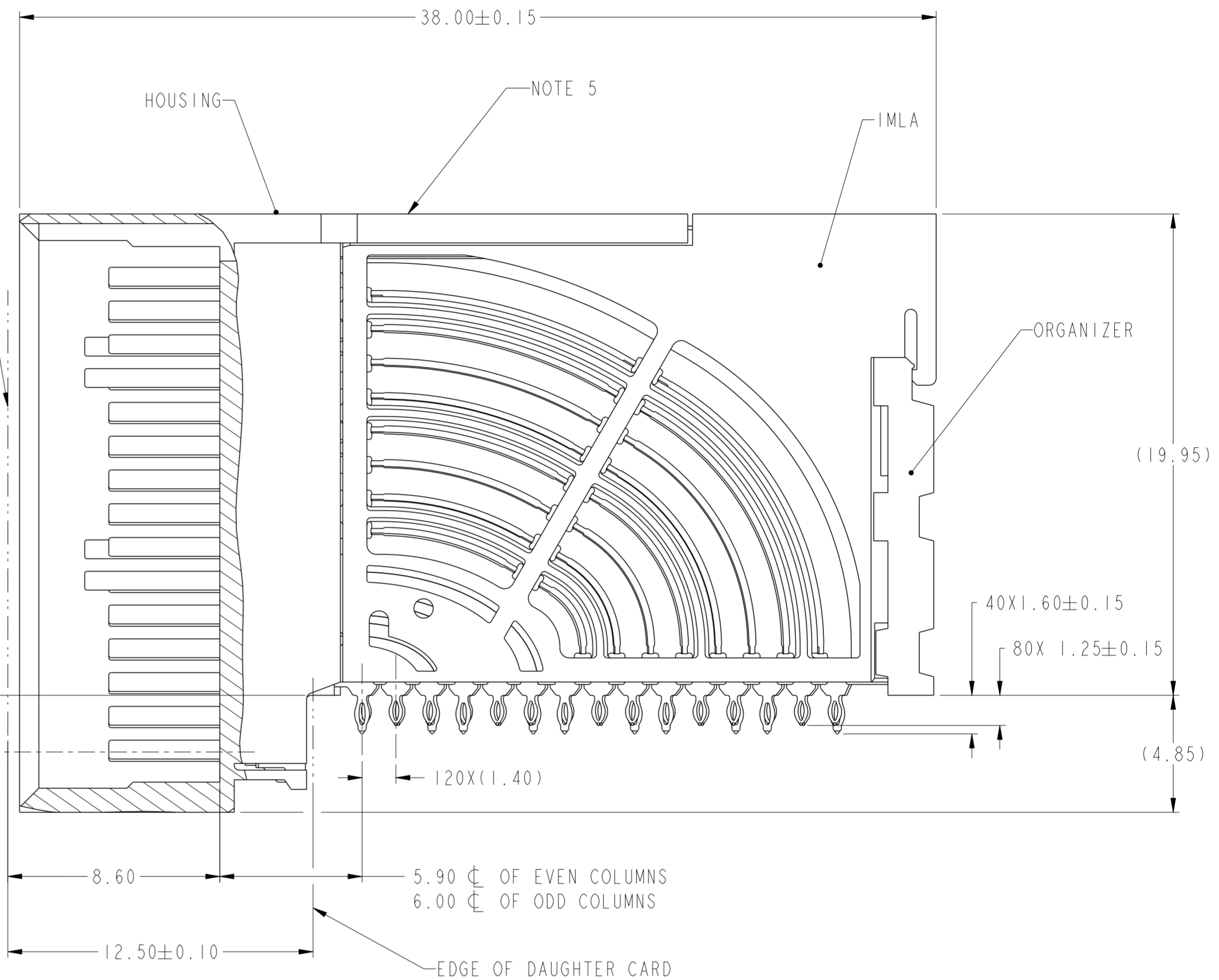


PRODUCT NUMBER
SEE SHEET 3



2.35 ϕ OF EVEN COLUMNS
2.25 ϕ OF ODD COLUMNS



SECTION AA-AA

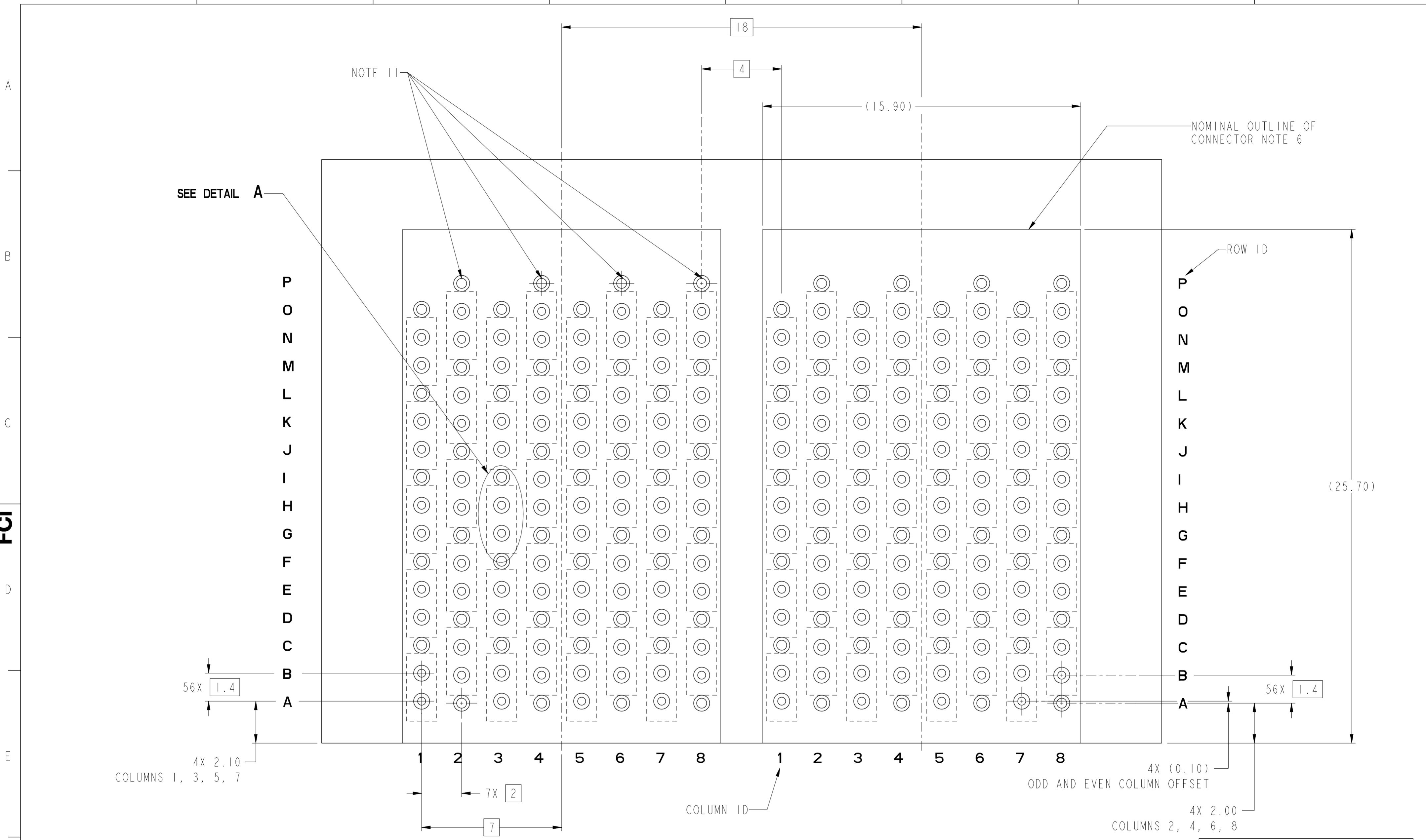
NOT TOOLED

PRELIMINARY

spec ref	---	dr	Tao Zhan	2015/10/13	projection	MM	size	A2	scale	10:1	
tolerance std	ASME Y14.5M	eng	Tao Zhan	2016/03/15			ecn no	-	rel level	Preliminary	
TOLERANCES UNLESS OTHERWISE SPECIFIED		chr	-	appr							-
surface	-	linear	0.X	±.3							
			0.XX	±.10							
			0.XXX	±.050							
		angular	0°	±2°							
				AIRMAX VS2 RA HEADER 5 PAIR 120 POS 2MM 8 COL SMALL PRESS FIT		dwg no 10136595		rev 1		cat. no. - Product - Customer Drw sheet 1 of 3	

Amphenol FCI

© 2016 APCI



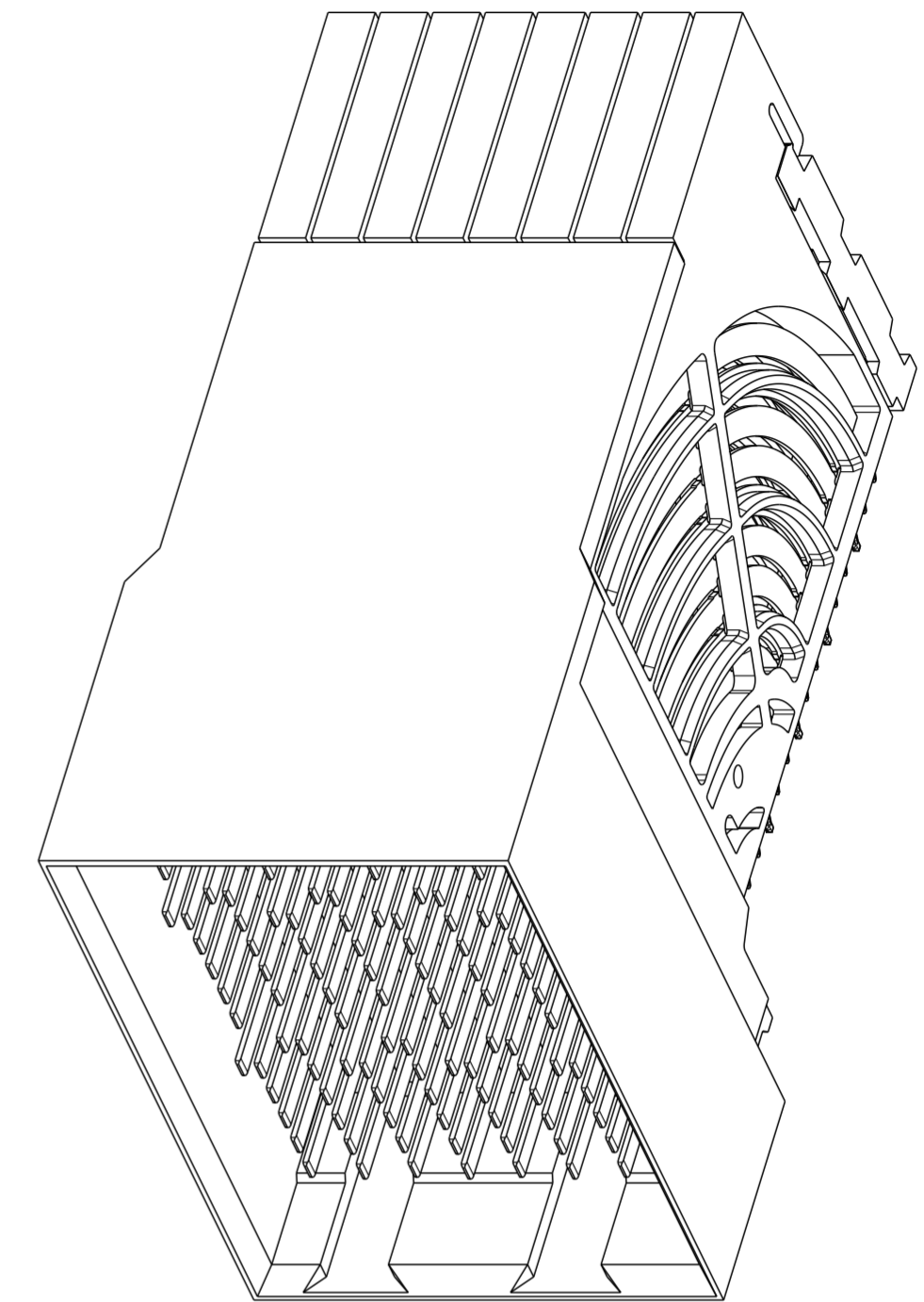
RECOMMENDED PCB LAYOUT
FOR DIFFERENTIAL APPLICATIONS
COMPONENT SIDE
(TWO ADJACENT FOOTPRINTS SHOWN)
NOTES 7 & 10
SCALE 8:1

PRELIMINARY

spec ref	---	dr	Tao Zhan	2015/10/13	projection	MM	size	A2	scale	8:1
tolerance std	ASME Y14.5M	eng	Tao Zhan	2016/03/15			ecn no	-	rel level	Preliminary
TOLERANCES UNLESS OTHERWISE SPECIFIED		chr	-	product family			-			
surface	-	appr	-	-	Amphenol FCi	title	AIRMAX VS2 RA HEADER		dwg no	10136595
	linear	0.X	±.3			5 PAIR 120 POS 2MM 8 COL SMALL PRESS FIT		rev	1	
		0.XX	±.10			cat. no.	-	Product - Customer Drw		sheet 2 of 3
		0.XXX	±.050							
	angular	0°	±2°							

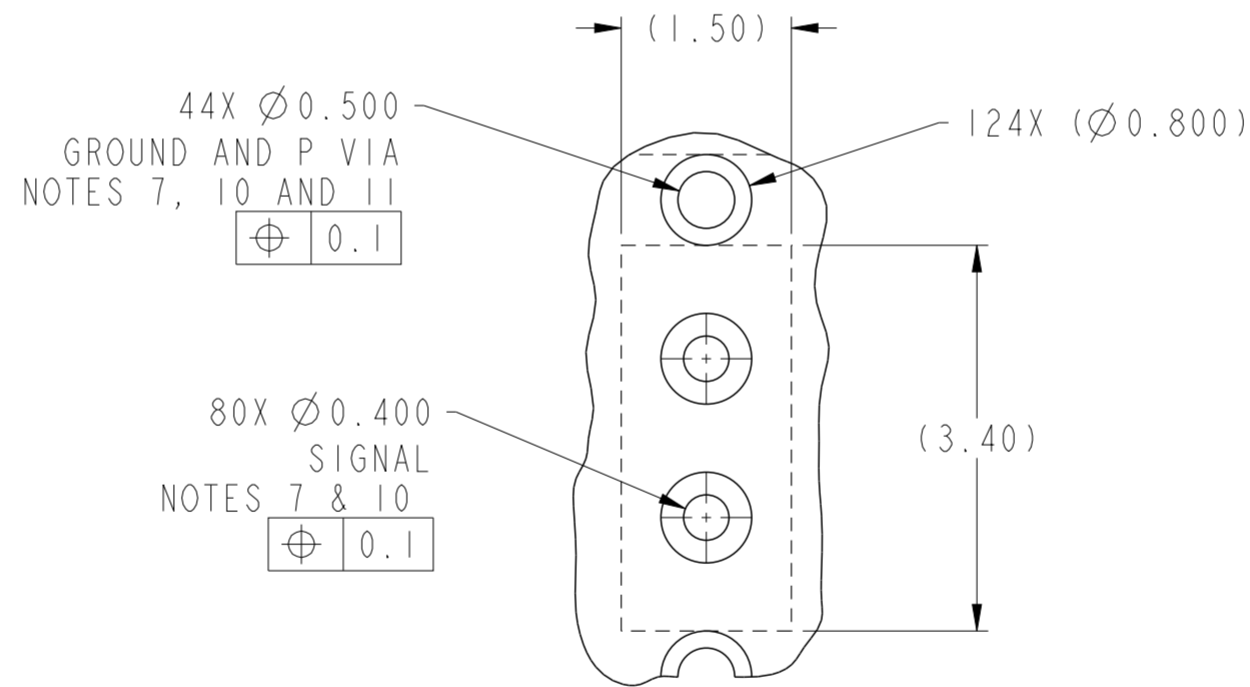
PRODUCT NUMBER	PRESS-FIT TAIL PLATING TYPE	REMARKS
10136595-101LF	TIN OVER NICKEL (LEAD FREE)	1-SIDE PLATING CUSTOMER SPECIAL
10136595-102LF	TIN OVER NICKEL (LEAD FREE)	2-SIDES PLATING

- 1 - CONNECTOR MATERIALS:
HOUSING: HIGH TEMP THERMOPLASTIC, NATURAL, UL94-V0
IMLA PLASTIC: HIGH TEMP THERMOPLASTIC, BLACK, UL94-V0
CONTACT: COPPER ALLOY
ORGANIZER: HIGH TEMP THERMOPLASTIC, NATURAL, UL94-V0
- 2 - CONTACT PLATING:
SEPARABLE INTERFACE:
PERFORMANCE-BASED PLATING, QUALIFIED TO MEET THE REQUIREMENTS OF FCI PRODUCT SPECIFICATION GS-12-0956 INCLUDING TELCORDIA GR-1217-CORE (NOVEMBER 1995) CENTRAL OFFICE TEST SEQUENCE
- PRESS-FIT TAILS: SEE TABLE
- 3 - PRODUCT SPECIFICATION: GS-12-0956
- 4 - APPLICATION SPECIFICATION: GS-20-0305
- 5 - PRODUCT MARKING, (PROTOTYPE, PART NUMBER & LOT CODE), ON THIS SURFACE.
- 6 - CONNECTOR OUTLINE MAY BE SCREEN PRINTED ONTO CUSTOMER PCB TO BE USED AS A GUIDE FOR CONNECTOR PLACEMENT.
- 7 - REFER TO CUSTOMER DRAWING 10104444 FOR INFORMATION ON PCB HOLE DIAMETERS AND PLATING OPTIONS
- 8 - LEAD FREE PRODUCT MEETS THE EUROPEAN UNION DIRECTIVES & OTHER COUNTRY REGULATIONS AS DESCRIBED IN GS-22-008
- 9 - PACKAGING MEETS GS-14-920 LEAD FREE LABELING SPECIFICATION.
- 10 - GROUND CONTACTS (C, F, I, L, & O IN ODD COLUMNS AND A, D, G, J, & M IN EVEN COLUMNS) REQUIRE ($\varnothing 0.500$) FINISHED HOLES. SIGNAL LOCATIONS REQUIRE ($\varnothing 0.400$) FINISHED HOLES
- 11 - THESE OUTER VIAS (P) ARE OPTIONAL. WHILE NO CONNECTOR EONS ARE PRESSED INTO THESE HOLES WE RECOMMEND ($\varnothing 0.500$) FINISHED HOLES AT THESE LOCATIONS TO PROVIDE GROUND SYMMETRY THROUGH THE PCB.
- 12 - A \triangle SYMBOL WILL BE NEXT TO ANY DIMENSION, VIEW, OR NOTE, WHICH HAS BEEN MODIFIED WITH THE CURRENT DRAWING REVISION.



10136595-101LF

SCALE 4:1



DETAIL A
SCALE 15:1

PRELIMINARY

spec ref	---	dr	Tao Zhan	2015/10/13	projection	MM	size	A2	scale	8:1
tolerance std	ASME Y14.5M	eng	Tao Zhan	2016/03/15	chr	-	ecn no	-	rel level	Preliminary
surface	-	appr	-	-	product family	-	cat. no.	-	Product - Customer Drw	sheet 3 of 3
		linear	0.X	$\pm .3$	Amphenol FCI	AIRMAX VS2 RA HEADER	5 PAIR 120 POS 2MM 8 COL SMALL PRESS FIT	cat. no.	Product - Customer Drw	sheet 3 of 3
			0.XX	$\pm .10$						
			0.XXX	$\pm .050$						
		angular	0°	$\pm 2^\circ$						

Amphenol FCI

© 2016 AFCI