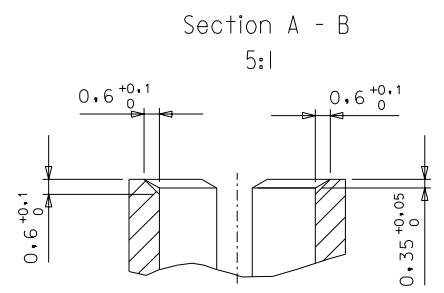
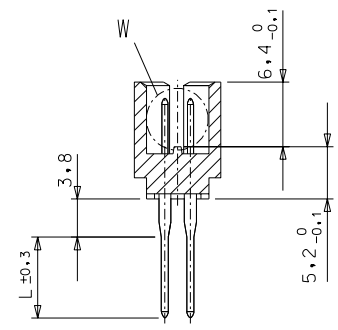
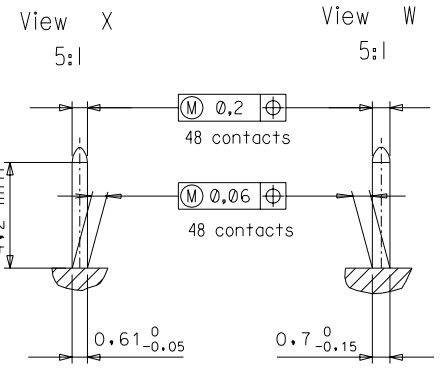
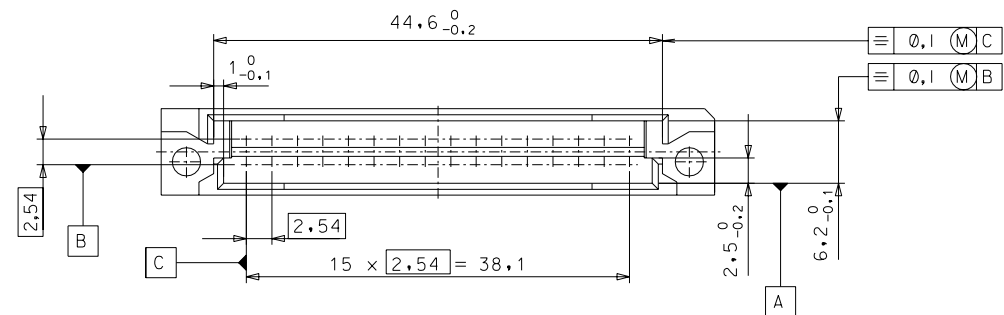
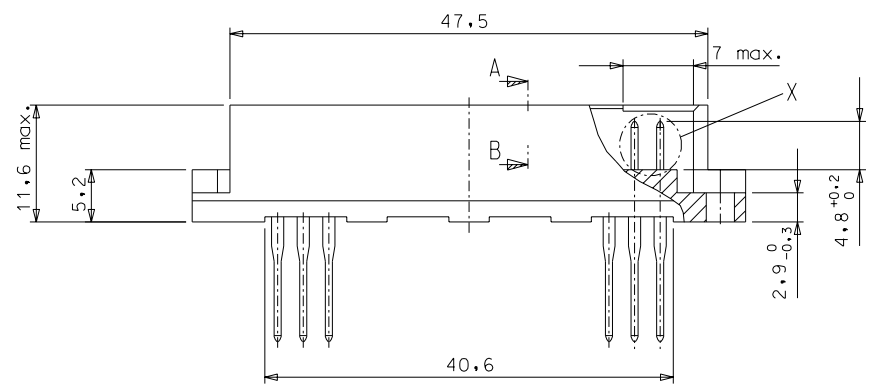
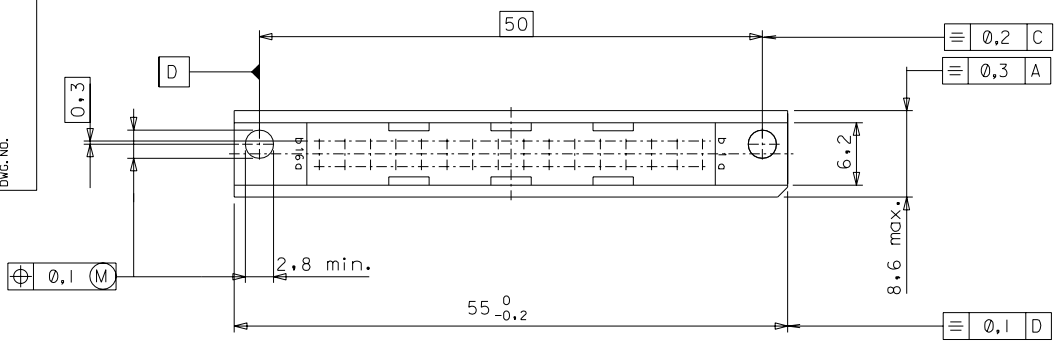


PART NO.
DWG. NO.



REVISIONS		FOR PREVIOUS REVISIONS SEE IPR LIST	
3 PLACE	±	±	
2 PLACE	±	°	±
1 PLACE	±	°	±

FIRST ANGLE PROJECTION		REVISE ONLY ON CAD SYSTEM	
UNLESS OTHERWISE SPECIFIED TOLERANCES: ANGULAR ±2'	DRWG BY	SIGN	CAD/CAM PROJECT NAME
INCH	CHK'D BY	SIGN	61243202
METRIC	APP'D BY	SIGN	dgn
DRAFT WHERE APPLICABLE MUST REMAIN WITHIN DIMENSIONS	SCALE		THIS DRAWING CONTAINS INFORMATION THAT IS PROPRIETARY TO MOLEX INC. & SHOULD NOT BE USED WITHOUT WRITTEN PERMISSION
DESIGN DIMENSION <input type="checkbox"/> MM <input checked="" type="checkbox"/> IN.	2:1		TITLE
EQUIVALENT DIMENSION <input type="checkbox"/> MM <input type="checkbox"/> IN.			32 pos. Male connector acc. DIN 41612 style Q/2 (C-Pin) / Dimensions
			MOLEX EUROPE
			SHEET NO. DATE
			10F3 94/02/07
			PART NO. DWG NO. SIZE
			SEE CHART 612-6043-202 B

32P-6043-0431-9	85011-0050	no	2	----- 2	1,2,3...16 a+b
32P-6043-042V-9	85011-0036	yes	2	----- 2	1,2,3...16 a+b
32P-6043-041V-7	85011-0177	yes	1	Wire wrap 13,3	1,2,3...16 a+b
32P-6043-041V-8	85011-0165	yes	1	Wire wrap 9,4	1,2,3...16 a+b
32P-6043-041V-9	85011-0153	yes	1	----- 2	1,2,3...16 a+b
32P-6043-042V-7	85011-0141	yes	2	Wire wrap 13,3	1,2,3...16 a+b
32P-6043-042V-8	85011-0139	yes	2	Wire wrap 9,4	1,2,3...16 a+b
Engineering number	Ordering code	Molex std.	Perform.level hard gold acc.MIL-G45204	Termination / L	Contact sequence / row

2	A
SH.	REV.

FIRST ANGLE PROJECTION		REVISE ONLY ON CAD SYSTEM	
REVISIONS	DIMENSIONS SHOWN (METRIC) INCH UNLESS OTHERWISE SPECIFIED TOLERANCES: ANGULAR ±2		DRWG BY Ca
	INCH (METRIC)		CHK'D BY
	3 PLACE ± .		APP'D BY <i>No.</i>
	2 PLACE ± . ±		SCALE
1 PLACE ± ±		TITLE 32 pos. Male connector acc. DIN 41612 style Q/2 (C-Pin) / Ordering code	
DRAFT WHERE APPLICABLE MUST REMAIN WITHIN DIMENSIONS		CAD/CAM FILENAME 61263202 dgn	
DESIGN DIMENSION <input checked="" type="checkbox"/> (MM) (PRIMARY) <input type="checkbox"/> IN.		THIS DRAWING CONTAINS INFORMATION THAT IS PROPRIETARY TO MOLEX INC. & SHOULD NOT BE USED WITHOUT WRITTEN PERMISSION	
EQUIVALENT DIMENSION <input type="checkbox"/> (MM) (SECONDARY) <input type="checkbox"/> IN.		SHEET NO. DATE 20F3 94/02/07	
LTR	PART NO. SEE CHART		DWG NO. 612-6043-202
	SIZE D		

- 1. General : Technical Data
32pos. Male connector acc.DIN 41612 style Q/2
(C-Pin)
- 2. Material :
- 2.1 Moulding material : Thermoplastic Polyester GV30 grey RAL 7032
- 2.1.1 Moulding material
burning properties acc. to UL94 V0
- 2.1.2 Resistance against
solvents : good
- 2.2 Pin contact : CuSn
- 2.2.1 Contact plating : Performance level I or II (Test acc.DIN 41612 part.5)
- 3. Printing : Part.No., date of manufacturing

Sheet	Dwg Issue	Date	Name	Change	Remark
1	Dimens. A	94/02/07	Ca
2	Ord.code A	94/02/07	Ca
3	Data A	94/02/07	Ca

Sheet 3 of 3

Umbrella index AA

M O L E X
GmbH

32pos.Male Connector
Data
612-6043-202