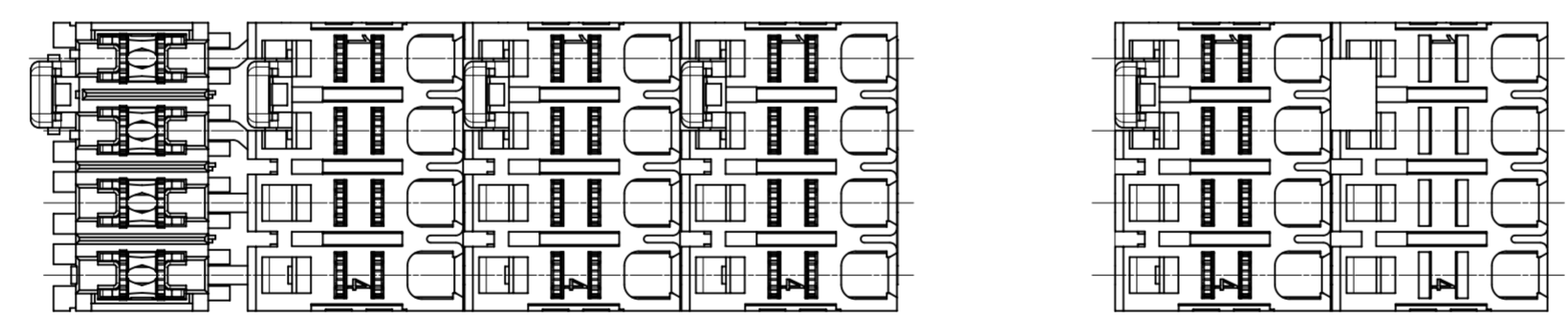
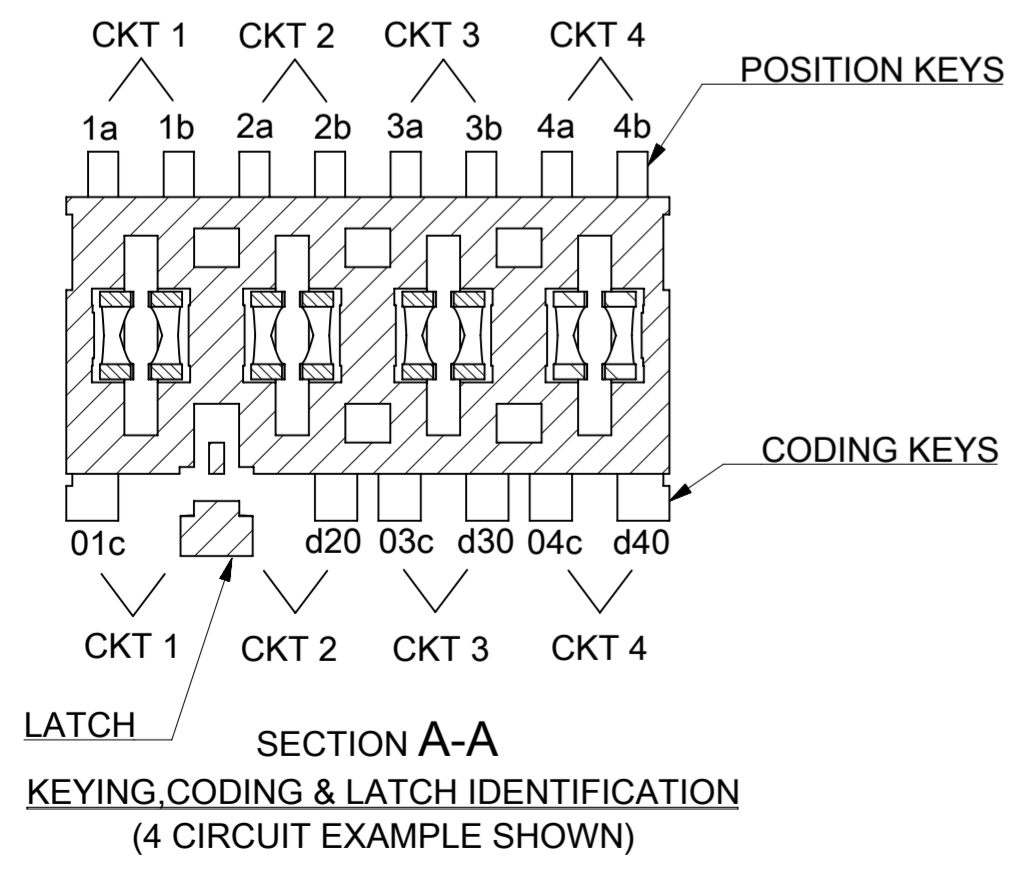


CKT SIZE	DIM A	DIM B
2	5.00	9.94 +/-0.04
3	10.00	14.93 +/-0.05
4	15.00	19.93 +/-0.05



- NOTES:
- MATERIALS:
HOUSING: PA 6,UL94 V-2
COLOUR : SEE SHEET 2
TERMINAL: PHOSPHOR BRONZE, (0.50)/0.020 THICK REF
PLATING: (2µm)/79µin MIN SILVER IN CONTACT AREA
(0.10µm)/0.004µin MIN SILVER FLASH ALLOWER
 - PRODUCT CONFORMS TO SPECIFICATION: PS-99020-0037
 - ACCEPTS CABLE, PER ES-99036-0010
 - SEE SUBSEQUENT SHEETS FOR PART NUMBERS SHOWING THE VARIOUS CODING, KEYING AND LATCHING OPTIONS.
 - PACKAGING SPECIFICATION PK-90833-001
 - APPLICATION SPECIFICATION AS-99033-0004



THIS DRAWING CONTAINS INFORMATION THAT IS PROPRIETARY TO MOLEX ELECTRONIC TECHNOLOGIES, LLC AND SHOULD NOT BE USED WITHOUT WRITTEN PERMISSION

DIMENSION UNITS	SCALE	CURRENT REV DESC: OBSOLETED P/N SHT2		molex			
mm	2:1						
GENERAL TOLERANCES (UNLESS SPECIFIED)		EC NO: 617985		RAST 5 INDIRECT FEMALE ASSEMBLY 16 AMPS			
ANGULAR TOL	± °	DRWN: AKUMAR19 2019/05/23					
4 PLACES	±	CHK'D: GGA 2019/06/05		PRODUCT CUSTOMER DRAWING			
3 PLACES	±	APPR: GGA 2019/06/05					
2 PLACES	± 0.05	INITIAL REVISION:		DOCUMENT NUMBER 917790001			
1 PLACE	± 0.1	DRWN: AKABADI 2017/04/17					
0 PLACES	±	APPR: BRUTTLE 2017/07/26		DOC TYPE PSD			
DRAFT WHERE APPLICABLE MUST REMAIN WITHIN DIMENSIONS		THIRD ANGLE PROJECTION					
		SERIES 91779		MATERIAL NUMBER SEE FOLLOWING SHEETS		REVISION J1	
				CUSTOMER GENERAL MARKET		SHEET NUMBER 1 OF 6	

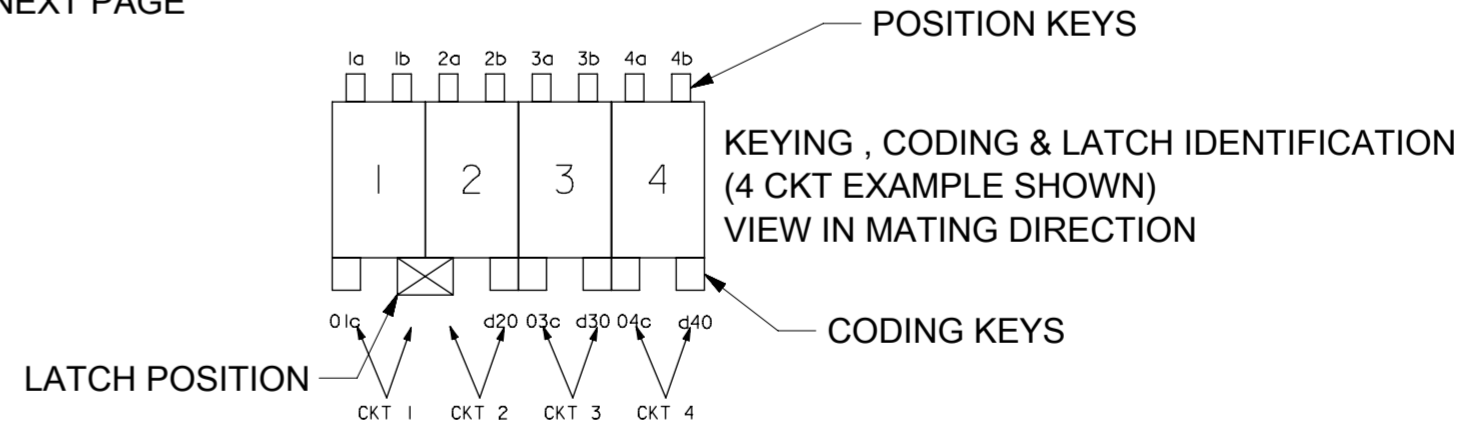
2 CIRCUIT

MOLEX PART NO.	HOUSING NO.	CIRCUIT SIZE	COLOUR	RAL NUMBER	POSITION KEYS	CODING KEYS	LATCH POSITION	CONFIGURATION	COLOUR STRIP
91779-0001	91779-9001	2	NATURAL	9001	1a 1b 2a 2b	01c d20	1/2		NONE
91779-0002	91779-9001	2	NATURAL	9001	1b 2a	01c d20	1/2		NONE
91779-0003	91779-9001	2	NATURAL	9001	1a 2b	d20	1/2		NONE
91779-0004	91779-9001	2	NATURAL	9001	1a	01c d20	1/2		NONE
91779-0005	91779-9001	2	NATURAL	9001	1a 2b	01c d20	1/2		BLUE
91779-0006	91779-9004	2	RED(PINK)	3014	1a 1b 2a 2b	NONE	1/2		NONE
91779-0007	91779-9001	2	NATURAL	9001	2a	01c	1/2		NONE
91779-0008	91779-9004	2	RED(PINK)	3014	1a 1b 2a 2b	d20	1/2		NONE
91779-0009	PART NUMBER OBSOLETE, REPLACED WITH 91779-0006.								
91779-0010	91779-9001	2	NATURAL	5004	1a 1b 2a 2b	NONE	1/2		BLACK
91779-0011	91779-9001	2	NATURAL	9001	1a	d20	1/2		NONE
91779-0012	91779-9001	2	NATURAL	9001	1b	01c d20	1/2		NONE
91779-0013	91779-9001	2	NATURAL	9001	1a	NONE	1/2		NONE
91779-0014	91779-9001	2	NATURAL	9001	1b 2a 2b	d20	1/2		NONE
91779-0015	91779-9001	2	NATURAL	9001	1a 1b 2a 2b	d20	1/2		NONE
91779-0016	91779-9001	2	NATURAL	9001	1a 1b 2a 2b	01c	1/2		NONE
91779-0017	91779-9004	2	RED(PINK)	3014	1a 1b 2b	NONE	1/2		NONE
91779-0018	91779-9001	2	NATURAL	9001	1b 2b	01c	1/2		NONE
91779-0019	91779-9001	2	NATURAL	9001	1b 2b	01c	1/2		GREEN
91779-0020	91779-9001	2	NATURAL	9001	1a 2b	d20	1/2		GREEN
91779-0021	91779-9001	2	NATURAL	9001	2a	01c d20	1/2		BLACK
91779-0022	91779-9001	2	NATURAL	9001	1b	d20	1/2		RED
91779-0023	91779-9001	2	NATURAL	9001	1b 2b	01c	1/2		BLUE

2 CIRCUIT

MOLEX PART NO.	HOUSING NO.	CIRCUIT SIZE	COLOUR	RAL NUMBER	POSITION KEYS	CODING KEYS	LATCH POSITION	CONFIGURATION	COLOUR STRIP
91779-0024	91779-9001	2	NATURAL	9001	1b 2b	01c	1/2		ORANGE
91779-0025	91779-9001	2	NATURAL	9001	1a 1b	d20	1/2		NONE
91779-0026	91779-9001	2	NATURAL	9001	1a 2b	01c	1/2		NONE
91779-0028	91779-9004	2	RED(PINK)	3014	2a 2b	NONE	1/2		NONE
91779-0029	91779-9001	2	NATURAL	9001	NONE	01c d20	1/2		NONE
91779-0030	91779-9001	2	NATURAL	9001	1a 2a 2b	01c d20	1/2		NONE
91779-0031	91779-9001	2	NATURAL	9001	1a 2a	01c d20	1/2		NONE
91779-0032	91779-9001	2	NATURAL	9001	1b 2b	01c d20	1/2		NONE
91779-0033	91779-9001	2	NATURAL	9001	1a 1b 2a 2b	01c d20	1/2		RED
91779-0034	91779-9001	2	NATURAL	9001	1a 1b 2a 2b	01c d20	1/2		GREEN
91779-0035	91779-9001	2	NATURAL	9001	2b	NONE	1/2		NONE
91779-0036	91779-9001	2	NATURAL	9001	1a 1b 2a 2b	NONE	1/2		NONE
91779-0038	91779-9001	2	NATURAL	9001	1b	NONE	1/2		NONE

TABLE CONTINUES NEXT PAGE



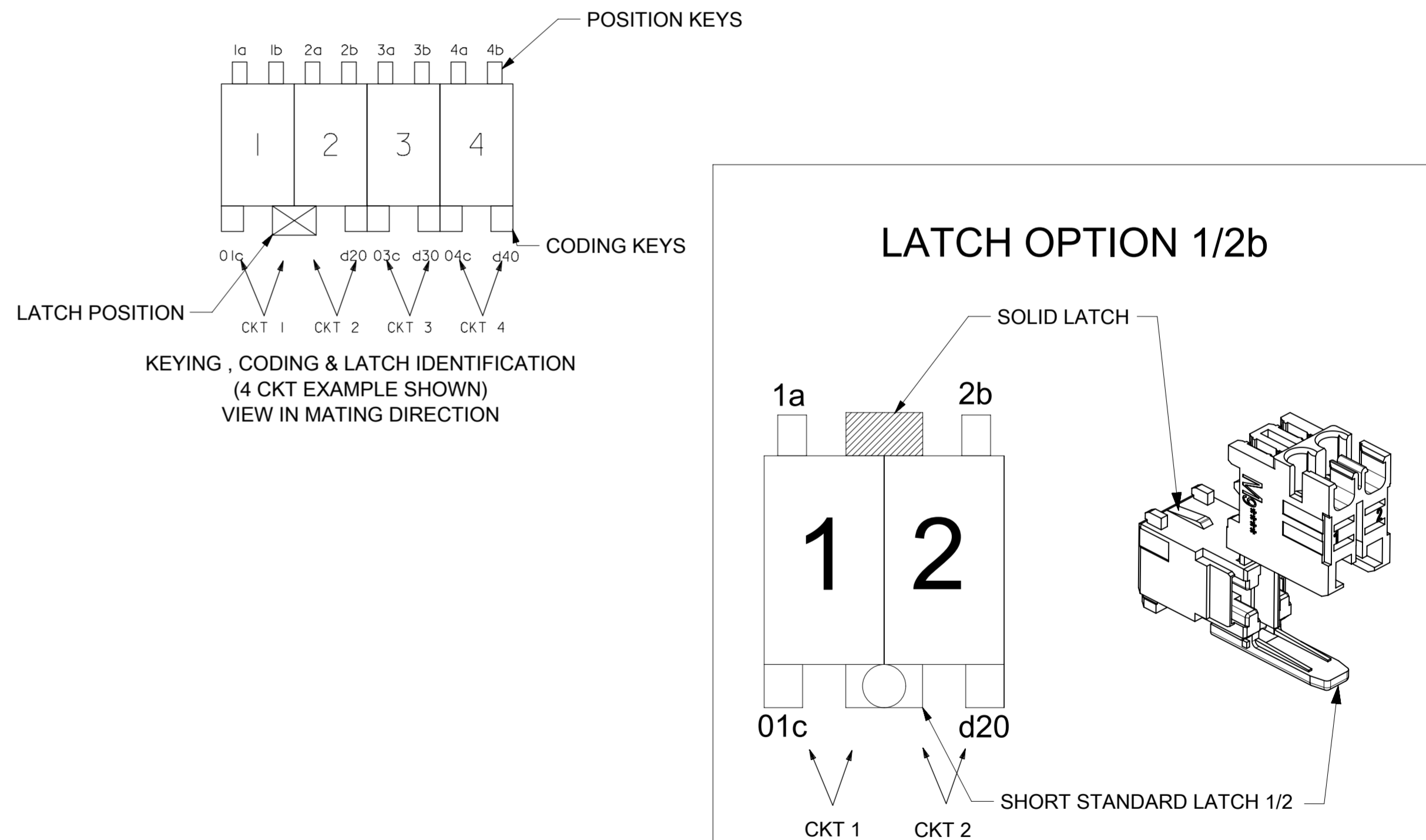
THIS DRAWING CONTAINS INFORMATION THAT IS PROPRIETARY TO MOLEX ELECTRONIC TECHNOLOGIES, LLC AND SHOULD NOT BE USED WITHOUT WRITTEN PERMISSION													
DIMENSION UNITS: mm		SCALE: 1:1		CURRENT REV DESC: OBSOLETE P/N SHT2									
GENERAL TOLERANCES (UNLESS SPECIFIED)				molex RAST 5 INDIRECT FEMALE ASSEMBLY 16 AMPS PRODUCT CUSTOMER DRAWING									
ANGULAR TOL ± °		EC NO: 617985								DRWN: AKUMAR19		2019/05/23	
4 PLACES ±		CHK'D: GGA								APPR: GGA		2019/06/05	
3 PLACES ±		INITIAL REVISION:								DRWN: AKABADI		2017/04/17	
2 PLACES ± 0.05		APPR: BRUTTLE								APPR: BRUTTLE		2017/07/26	
1 PLACE ± 0.1		DRAWING: A2-SIZE		SERIES: 91779		DOCUMENT NUMBER: 917790001		DOC TYPE: PSD					
0 PLACES ±		THIRD ANGLE PROJECTION		DRAWING: A2-SIZE		SERIES: 91779		DOC PART: 000					
DRAFT WHERE APPLICABLE MUST REMAIN WITHIN DIMENSIONS		THIRD ANGLE PROJECTION		DRAWING: A2-SIZE		SERIES: 91779		REVISION: J1					
MATERIAL NUMBER: SEE FOLLOWING SHEETS		CUSTOMER: GENERAL MARKET		SHEET NUMBER: 2 OF 6									

CIRCUIT 2 CONTIN'D

MOLEX PART NO.	HOUSING NO.	CIRCUIT SIZE	COLOUR	RAL NUMBER	POSITION KEYS	CODING KEYS	LATCH POSITION	CONFIGURATION	COLOUR STRIP
91779-0039	91779-9001	2	NATURAL	9001	1a 2b	NONE	1/2		NONE
91779-0040	91779-9004	2	RED(PINK)	3014	1a 2a	01c	1/2		NONE
91779-0041	91779-9001	2	NATURAL	9001	1b 2a 2b	01c d20	1/2		NONE
91779-0042	91779-9001	2	NATURAL	9001	NONE	01c	1/2		NONE
91779-0043	91779-9005	2	NATURAL	9001	NONE	NONE	1/2b & SHORT STD LATCH 1/2		NONE
91779-0044	91779-9001	2	NATURAL	9001	1a 1b 2a 2b	01c	1/2		NONE
91779-0045	91779-9001	2	NATURAL	9001	NONE	d20	1/2		NONE
91779-0046	91779-9001	2	NATURAL	9001	NONE	NONE	1/2		NONE
91779-0047	91779-9005	2	NATURAL	9001	NONE	01c	1/2b & SHORT STD LATCH 1/2		NONE
91779-0048	91779-9005	2	NATURAL	9001	2b	01c d20	1/2b & SHORT STD LATCH 1/2		NONE
91779-0049	91779-9005	2	NATURAL	9001	1a 2b	01c d20	1/2b & SHORT STD LATCH 1/2		NONE
91779-0050	91779-9001	2	NATURAL	9001	2a 2b	NONE	1/2		NONE
91779-0051	91779-9005	2	NATURAL	9001	1a 2b	d20	1/2b & SHORT STD LATCH 1/2		NONE
91779-0052	91779-9001	2	NATURAL	9001	NONE	01c d20	1/2		NONE
91779-0053	91779-9005	2	NATURAL	9001	1a 2b	NONE	1/2b & SHORT STD LATCH 1/2		NONE
91779-0054	91779-9004	2	RED(PINK)	3014	1a 1b 2a 2b	01c d20	1/2		NONE
91779-0055	91779-9004	2	RED(PINK)	3014	1a 1b 2a 2b	01c	1/2		NONE
91779-0056	91779-9004	2	RED(PINK)	3014	1a 1b 2a 2b	d20	1/2		NONE
91779-0057	91779-9004	2	RED(PINK)	3014	1a 2b	d20	1/2		NONE
91779-0058	91779-9001	2	NATURAL	9001	1a 2b	d20	1/2		NONE
91779-0059	91779-9001	2	NATURAL	9001	1a 2a	01c	1/2		NONE

CIRCUIT 2 CONTIN'D

MOLEX PART NO.	HOUSING NO.	CIRCUIT SIZE	COLOUR	RAL NUMBER	POSITION KEYS	CODING KEYS	LATCH POSITION	CONFIGURATION	COLOUR STRIP
91779-0061	91779-9004	2	RED(PINK)	3014	2a	01c d20	1/2		NONE
91779-0062	91779-9004	2	RED(PINK)	3014	1a 2b	NONE	1/2		NONE
91779-0063	91779-9001	2	NATURAL	9001	1a 2b	01c	1/2		NONE
91779-0064	91779-9001	2	NATURAL	9001	1b	d20	1/2		NONE
91779-0065	91779-9001	2	NATURAL	9001	2b	01c d20	1/2		NONE
91779-0066	91779-9004	2	RED(PINK)	3014	1b 2a	01c d20	1/2		NONE



THIS DRAWING CONTAINS INFORMATION THAT IS PROPRIETARY TO MOLEX ELECTRONIC TECHNOLOGIES, LLC AND SHOULD NOT BE USED WITHOUT WRITTEN PERMISSION

DIMENSION UNITS: mm	SCALE: 1:1	CURRENT REV DESC: OBSOLETE P/N SHT2	molex		
GENERAL TOLERANCES (UNLESS SPECIFIED)		EC NO: 617985	RAST 5 INDIRECT FEMALE ASSEMBLY 16 AMPS		
ANGULAR TOL ± °	4 PLACES ±	DRWN: AKUMAR19 2019/05/23	PRODUCT CUSTOMER DRAWING		
3 PLACES ±	2 PLACES ± 0.05	CHK'D: GGA 2019/06/05	DOCUMENT NUMBER: 917790001		
1 PLACE ± 0.1	0 PLACES ±	APPR: GGA 2019/06/05	DOC TYPE: PSD	DOC PART: 000	REVISION: J1
DRAFT WHERE APPLICABLE MUST REMAIN WITHIN DIMENSIONS		INITIAL REVISION: DRWN: AKABADI 2017/04/17	MATERIAL NUMBER: SEE FOLLOWING SHEETS		
THIRD ANGLE PROJECTION		APPR: BRUTTLE 2017/07/26	CUSTOMER: GENERAL MARKET		
DRAWING: A2-SIZE		SERIES: 91779	SHEET NUMBER: 3 OF 6		

3 CIRCUIT

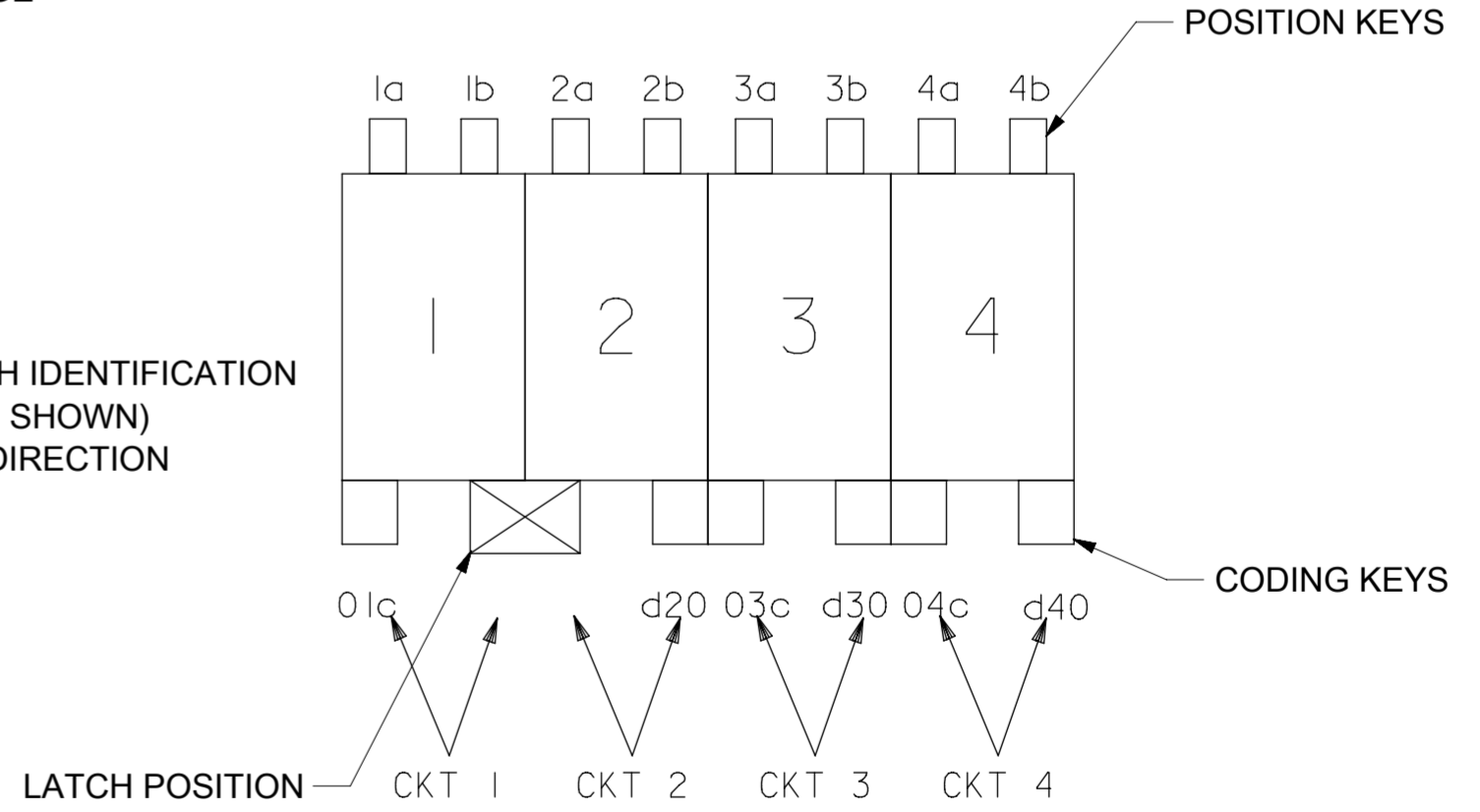
MOLEX PART NO.	HOUSING NO.	CIRCUIT SIZE	COLOUR	RAL NUMBER	POSITION KEYS	CODING KEYS	LATCH POSITION	CONFIGURATION	COLOUR STRIP
91779-0101	91779-9101	3	NATURAL	9001	1a 1b 2a 2b 3a 3b	01c d20 03c d30	1/2		NONE
91779-0102	91779-9102	3	NATURAL	9001	1a 1b 2a 2b 3a 3b	01c d10 02c d30	2/3		NONE
91779-0103	91779-9101	3	NATURAL	9001	1b	01c d20	1/2		NONE
91779-0104	91779-9102	3	NATURAL	9001	2a	d10 d30	2/3		NONE
91779-0105	91779-9102	3	NATURAL	9001	3b	02c d30	2/3		NONE
91779-0106	91779-9101	3	NATURAL	9001	NONE	NONE	1/2		NONE
91779-0107	91779-9101	3	NATURAL	9001	1b	01c d20	1/2		RED
91779-0108	91779-9101	3	NATURAL	9001	1a	01c d20	1/2		NONE
91779-0109	91779-9103	3	RED(PINK)	3014	1a 1b 2a 2b 3a 3b	NONE	2/3		NONE
91779-0110	91779-9103	3	RED(PINK)	3014	2b 3b	d10	2/3		NONE
91779-0111	91779-9102	3	NATURAL	9001	2b 3a	d10 d30	2/3		NONE
91779-0112	PART NUMBER OBSOLETE, REPLACED WITH 91779-0109								
91779-0113	91779-9103	3	RED(PINK)	3014	1a 1b 2a 2b 3a 3b	d10	2/3		NONE
91779-0114	91779-9102	3	NATURAL	9001	1a 1b 2a 2b 3a 3b	d10	2/3		NONE
91779-0115	91779-9101	3	NATURAL	9001	NONE	03c	1/2		NONE
91779-0116	91779-9101	3	NATURAL	9001	1a 1b	d30	1/2		NONE
91779-0117	91779-9102	3	NATURAL	9001	2a	d10 02c d30	2/3		NONE
91779-0118	91779-9102	3	NATURAL	9001	2a	d10	2/3		NONE
91779-0119	91779-9101	3	NATURAL	9001	2a	01c d30	1/2		NONE

3 CIRCUIT

MOLEX PART NO.	HOUSING NO.	CIRCUIT SIZE	COLOUR	RAL NUMBER	VOID CIRCUIT	POSITION KEYS	CODING KEYS	LATCH POSITION	CONFIGURATION	COLOUR STRIP
91779-0120	91779-9102	3	NATURAL	9001	NONE	2b 3b	d30	2/3		NONE
91779-0121	91779-9101	3	NATURAL	9001	NONE	NONE	01c d30	1/2		NONE
91779-0122	91779-9103	3	RED(PINK)	3014	NONE	1b 2a 2b 3b	NONE	2/3		NONE
91779-0123	91779-9103	3	RED(PINK)	3014	2	2b 3b	d10	2/3		NONE
91779-0124	91779-9102	3	NATURAL	9001	NONE	NONE	d10 02c d30	2/3		NONE
91779-0126	91779-9101	3	NATURAL	9001	NONE	3b	01c d30	1/2		NONE
91779-0127	91779-9102	3	NATURAL	9001	NONE	1a 2a 3b	d10 d30	2/3		NONE
91779-0128	91779-9102	3	NATURAL	9001	NONE	1a 2b	NONE	2/3		NONE
91779-0129	91779-9102	3	NATURAL	9001	NONE	1a 1b 2a 2b 3a 3b	01c d30	2/3		NONE
91779-0130	91779-9101	3	NATURAL	9001	NONE	1a 3b	01c	1/2		NONE
91779-0132	91779-9102	3	NATURAL	9001	NONE	2a 3a	d30	2/3		NONE

TABLE CONTINUES NEXT PAGE

KEYING, CODING & LATCH IDENTIFICATION
(4 CKT EXAMPLE SHOWN)
VIEW IN MATING DIRECTION

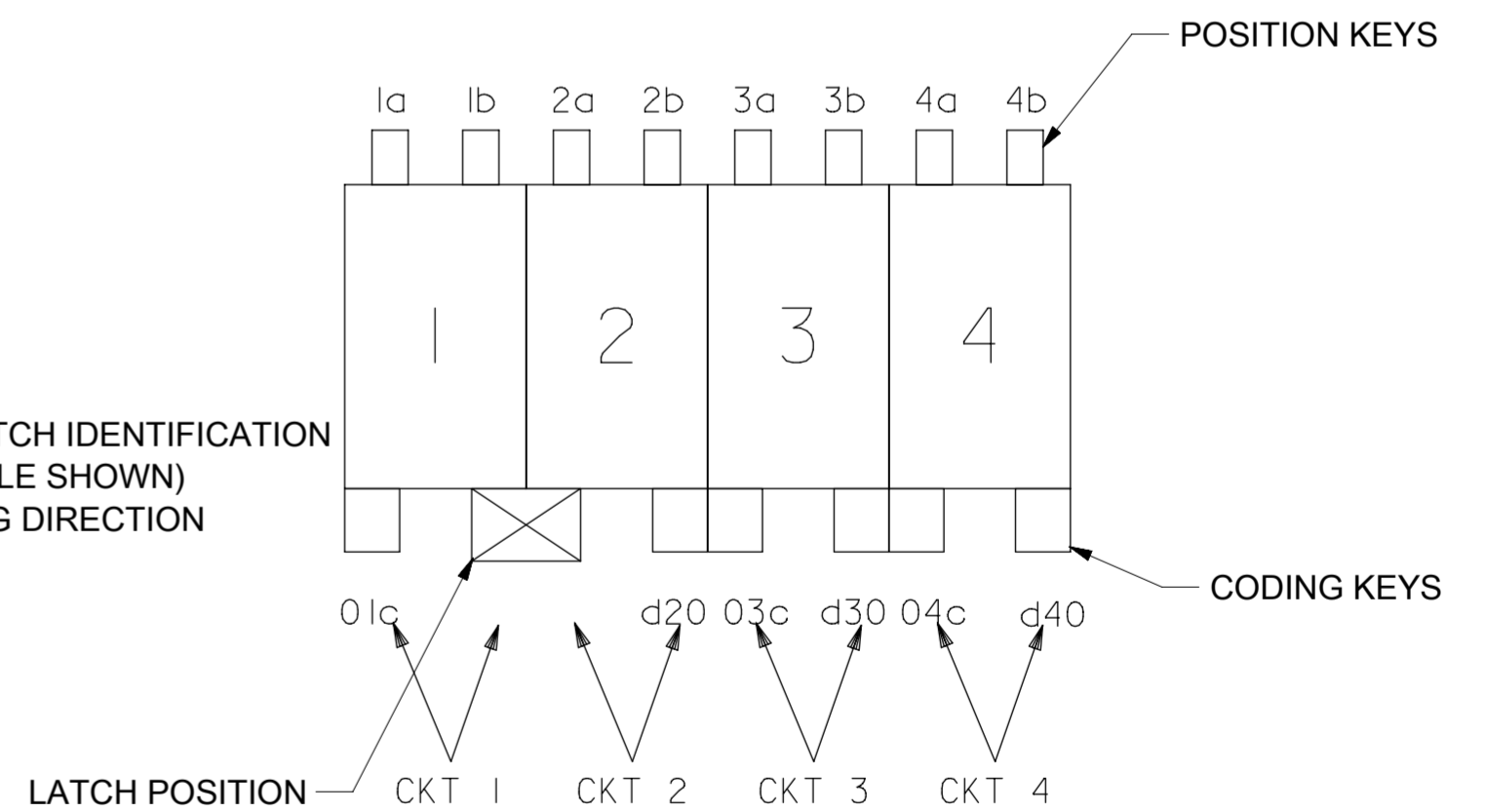


THIS DRAWING CONTAINS INFORMATION THAT IS PROPRIETARY TO MOLEX ELECTRONIC TECHNOLOGIES, LLC AND SHOULD NOT BE USED WITHOUT WRITTEN PERMISSION													
DIMENSION UNITS mm		SCALE 1:1		CURRENT REV DESC: OBSOLETE P/N SHT2									
GENERAL TOLERANCES (UNLESS SPECIFIED)				<p>FAST 5 INDIRECT FEMALE ASSEMBLY 16 AMPS</p> <p>PRODUCT CUSTOMER DRAWING</p>									
ANGULAR TOL ± °		4 PLACES ±								EC NO: 617985		2019/05/23	
3 PLACES ±		2 PLACES ± 0.05								DRWN: AKUMAR19		2019/06/05	
1 PLACE ± 0.1		0 PLACES ±								CHK'D: GGA		2019/06/05	
DRAFT WHERE APPLICABLE MUST REMAIN WITHIN DIMENSIONS		THIRD ANGLE PROJECTION								DRAWING		SERIES	
DOCUMENT NUMBER 917790001		DOC TYPE PSD		DOC PART 000		REVISION J1							
MATERIAL NUMBER SEE FOLLOWING SHEETS		CUSTOMER GENERAL MARKET		SHEET NUMBER 4 OF 6									

CIRCUIT 3 CONTIN'D

MOLEX PART NO.	HOUSING NO.	CIRCUIT SIZE	COLOUR	RAL NUMBER	VOID CIRCUIT	POSITION KEYS	CODING KEYS	LATCH POSITION	CONFIGURATION	COLOUR STRIP
91779-0133	91779-9107	3	NATURAL	9001	NONE	1a 3b	01c	2/3b & SHORT STD LATCH 2/3		NONE
91779-0134	91779-9102	3	NATURAL	9001	NONE	3b	01c d30	2/3		NONE
91779-0135	91779-9108	3	NATURAL	9001	NONE	1a 2b 3a 3b	NONE	1/2b		NONE
91779-0136	91779-9107	3	NATURAL	9001	NONE	2a 3b	NONE	2/3b & SHORT STD LATCH 2/3		NONE
91779-0137	91779-9107	3	NATURAL	9001	NONE	NONE	NONE	2/3b & SHORT STD LATCH 2/3		NONE
91779-0138	91779-9102	3	NATURAL	9001	NONE	2a	d10 d30	2/3		NONE
91779-0139	91779-9102	3	NATURAL	9001	NONE	1a 3b	d10	2/3		NONE
91779-0140	91779-9102	3	NATURAL	9001	NONE	2a 2b	NONE	2/3		NONE
91779-0141	91779-9102	3	NATURAL	9001	NONE	1a 3b	NONE	2/3		NONE
91779-0142	91779-9101	3	NATURAL	9001	NONE	1a 1b	d20	1/2		NONE
91779-0143	91779-9101	3	NATURAL	9001	NONE	1a 3a	01c	1/2		NONE
91779-0144	91779-9105	3	RED(PINK)	3014	NONE	1a 1b 2a 2b 3a 3b	d20	1/2		NONE
91779-0145	91779-9105	3	RED(PINK)	3014	NONE	1a	d20	1/2		NONE
91779-0146	91779-9102	3	NATURAL	9001	NONE	3b	d10 d30	2/3		NONE
91779-0147	91779-9101	3	NATURAL	9001	NONE	1a 1b 2a 2b 3a 3b	01c d20 03c	1/2		BLUE
91779-0148	91779-9105	3	RED(PINK)	3014	NONE	1a 1b 2a 2b 3a 3b	01c d20 03c d30	1/2		NONE
91779-0149	91779-9105	3	RED(PINK)	3014	NONE	1b	01c d20	1/2		NONE
91779-0150	91779-9102	3	NATURAL	9001	NONE	2b 3b	01c d10 02c d30	2/3		NONE
91779-0151	91779-9101	3	NATURAL	9001	NONE	2b 3a 3b	01c d20 03c d30	1/2		NONE

KEYING, CODING & LATCH IDENTIFICATION
(4 CKT EXAMPLE SHOWN)
VIEW IN MATING DIRECTION



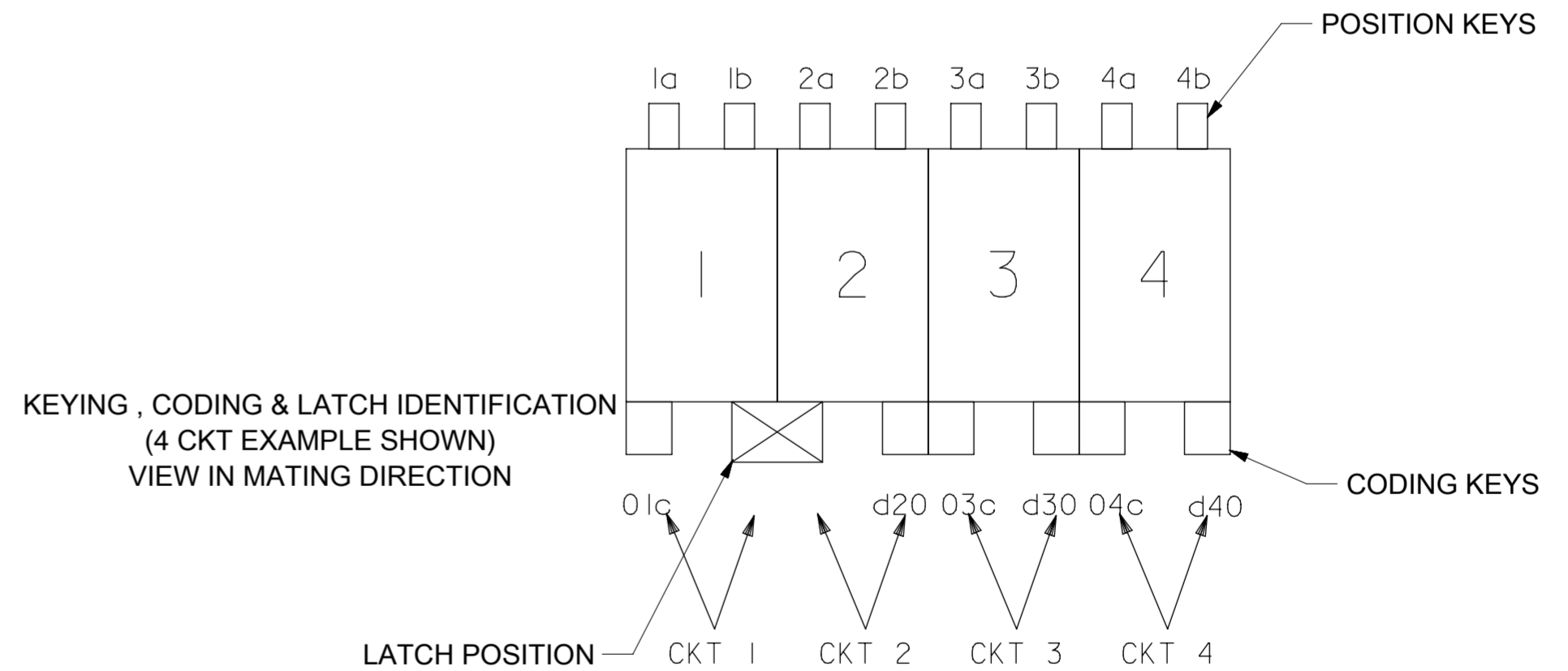
THIS DRAWING CONTAINS INFORMATION THAT IS PROPRIETARY TO MOLEX ELECTRONIC TECHNOLOGIES, LLC AND SHOULD NOT BE USED WITHOUT WRITTEN PERMISSION									
DIMENSION UNITS		SCALE		CURRENT REV DESC: OBSOLETE P/N SHT2					
mm		1:1							
GENERAL TOLERANCES (UNLESS SPECIFIED)				molex RAST 5 INDIRECT FEMALE ASSEMBLY 16 AMPS PRODUCT CUSTOMER DRAWING					
ANGULAR TOL		± °							
4 PLACES		±							
3 PLACES		±							
2 PLACES		± 0.05							
1 PLACE		± 0.1		INITIAL REVISION:		DOCUMENT NUMBER		DOC TYPE DOC PART REVISION	
0 PLACES		±		DRWN: AKABADI		2017/04/17		917790001	
DRAFT WHERE APPLICABLE MUST REMAIN WITHIN DIMENSIONS		THIRD ANGLE PROJECTION		DRAWING		SERIES		MATERIAL NUMBER	
				A2-SIZE		91779		SEE FOLLOWING SHEETS	
								CUSTOMER	
								GENERAL MARKET	
								SHEET NUMBER	
								5 OF 6	

4 CIRCUIT

MOLEX PART NO.	HOUSING NO.	CIRCUIT SIZE	COLOUR	RAL NUMBER	POSITION KEYS	CODING KEYS	LATCH POSITION	CONFIGURATION	COLOUR STRIP
91779-0201	91779-9201	4	NATURAL		1a 1b 2a 2b 3a 3b 4a 4b	01c d20 03c d40	1/2, 3/4		NONE
91779-0202	91779-9201	4	NATURAL	9001	1b	03c d40	1/2, 3/4		NONE
91779-0203	91779-9201	4	NATURAL	9001	1a 3a 3b	01c d20 d40	1/2, 3/4		NONE
91779-0204	91779-9202	4	NATURAL	9001	NONE	d20	1/2		NONE
91779-0205	91779-9201	4	NATURAL	9001	2a, 4b	d20	1/2, 3/4		NONE
91779-0206	91779-9201	4	NATURAL	9001	2b	d20	1/2, 3/4		NONE
91779-0207	91779-9207	4	NATURAL	9001	3a	01c d20 03c d40	3/4		NONE
91779-0208	91779-9201	4	NATURAL	9001	3a	01c d20 03c d40	1/2, 3/4		NONE
91779-0209	91779-9208	4	NATURAL	9001	1a 2b 3b 4b	01c d10 02c d30 04c d40	2/3		NONE
91779-0210	91779-9201	4	NATURAL	9001	1a 1b 2b 3a 3b 4b	d20 d40	1/2, 3/4		NONE
91779-0211	91779-9201	4	NATURAL	9001	2a 2b 3b 4b	01c d20 03c d40	1/2, 3/4		NONE
91779-0212	91779-9201	4	NATURAL	9001	2a 3a 4b	01c	1/2, 3/4		NONE
91779-0213	91779-9202	4	NATURAL	9001	2a 4b	01c d30	1/2		NONE
91779-0214	91779-9202	4	NATURAL	9001	1a 1b 2a 2b 3a 3b 4a 4b	01c d20 03c d30 04c d40	1/2		NONE
91779-0215	91779-9201	4	NATURAL	9001	1a 2b 3b	d40	1/2, 3/4		NONE

4 CIRCUIT

MOLEX PART NO.	HOUSING NO.	CIRCUIT SIZE	COLOUR	RAL NUMBER	POSITION KEYS	CODING KEYS	LATCH POSITION	CONFIGURATION	COLOUR STRIP
91779-0216	91779-9201	4	NATURAL	9001	1b 2a 3a 4b	01c d40	1/2, 3/4		NONE
91779-0217	PART NUMBER OBSOLETE. REPLACED WITH 91779-0205								
91779-0218	91779-9201	4	NATURAL	9001	1a 1b 3a 3b	03c d40	1/2, 3/4		NONE
91779-0219	91779-9201	4	NATURAL	9001	1b 2a 3a 4a	01c d20 03c	1/2, 3/4		NONE
91779-0220	91779-9207	4	NATURAL	9001	1a 1b 2a 2b 3a 4b	01c d40	3/4		NONE
91779-0221	91779-9202	4	NATURAL	9001	1a 1b 2a 2b 3a 4b	01c d40	1/2		NONE
91779-0222	91779-9208	4	NATURAL	9001	1a 1b 2a 2b 3a 4b	01c d40	2/3		NONE
91779-0223	91779-9209	4	NATURAL	9001	1a 2b	04c	1/2b 3/4b & SHORT STD LATCH 1/2		NONE
91779-0224	91779-9209	4	NATURAL		2b	04c	1/2b 3/4b & SHORT STD LATCH 1/2		NONE
91779-0225	91779-9210	4	NATURAL	9001	1a 2b	04c	1/2b & SHORT STD LATCH 1/2		NONE



THIS DRAWING CONTAINS INFORMATION THAT IS PROPRIETARY TO MOLEX ELECTRONIC TECHNOLOGIES, LLC AND SHOULD NOT BE USED WITHOUT WRITTEN PERMISSION									
DIMENSION UNITS		SCALE		CURRENT REV DESC: OBSOLETE P/N SHT2					
mm		1:1							
GENERAL TOLERANCES (UNLESS SPECIFIED)				molex RAST 5 INDIRECT FEMALE ASSEMBLY 16 AMPS PRODUCT CUSTOMER DRAWING					
ANGULAR TOL		± °							
4 PLACES		±							
3 PLACES		±							
2 PLACES		± 0.05							
1 PLACE		± 0.1		EC NO: 617985		2019/05/23		DOCUMENT NUMBER 917790001 DOC TYPE DOC PART REVISION PSD 000 J1	
0 PLACES		±		DRWN: AKUMAR19		2019/06/05			
DRAFT WHERE APPLICABLE MUST REMAIN WITHIN DIMENSIONS		THIRD ANGLE PROJECTION		DRAWING		SERIES			
				A2-SIZE		91779			
				MATERIAL NUMBER		CUSTOMER			
				SEE FOLLOWING SHEETS		GENERAL MARKET		6 OF 6	