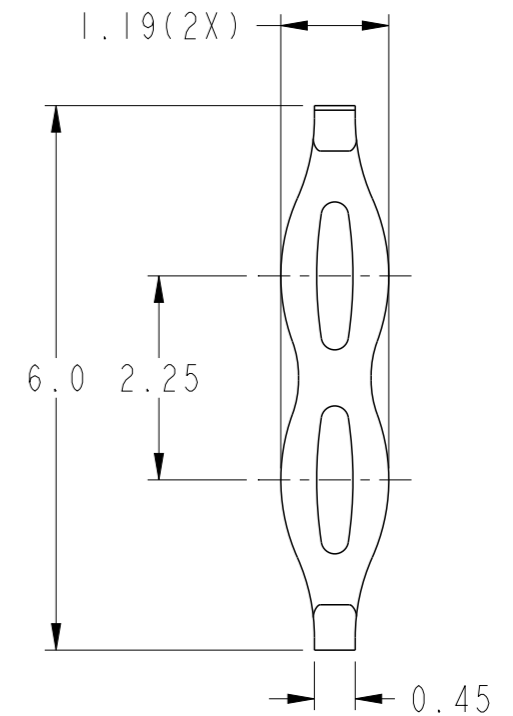
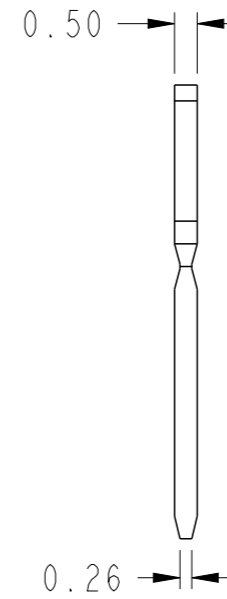
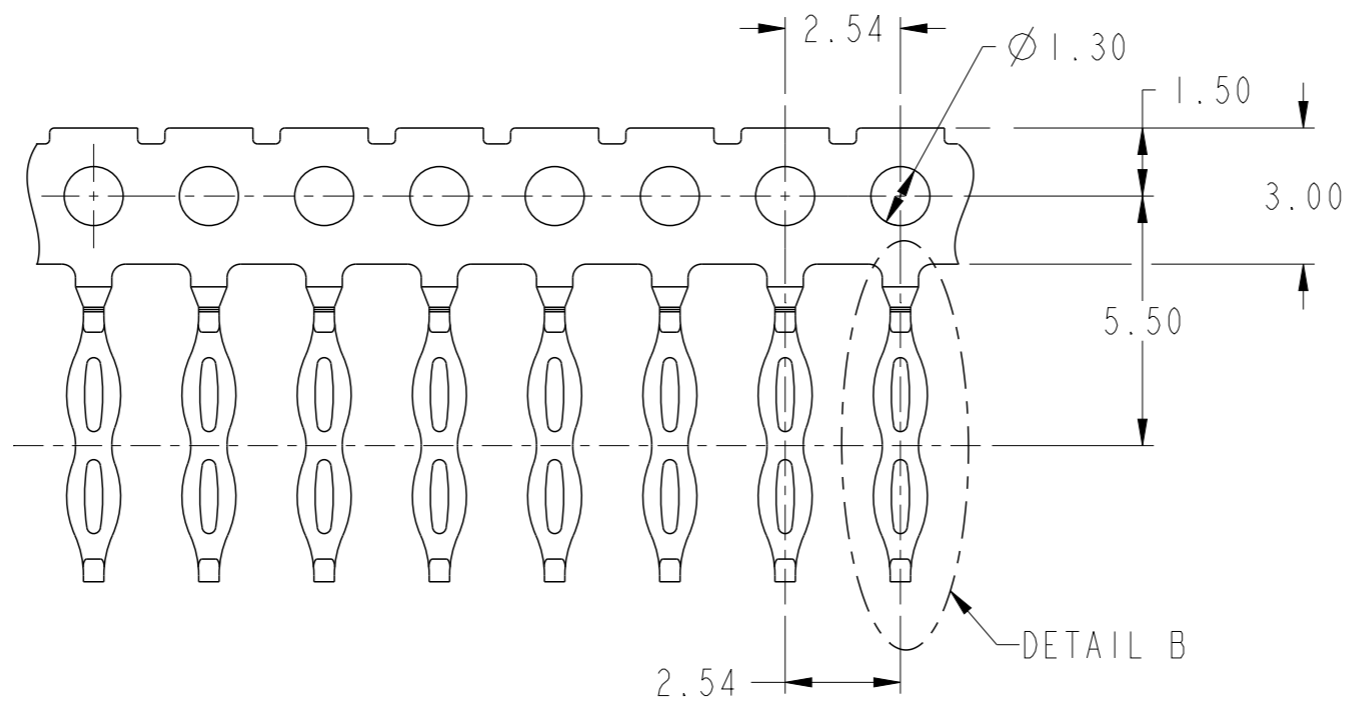
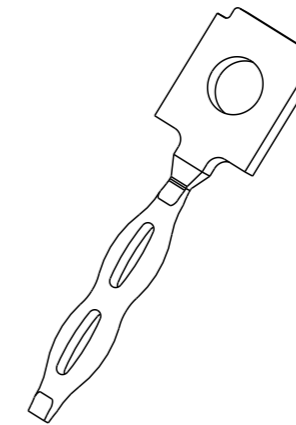


REELING DIRECTION  
AFTER PLATING



SCALE 12:1  
DETAIL B



NOTES:

1. MATERIAL: COPPER ALLOY, THICKNESS; 0.5mm;
2. PLATING: "PLEASE SEE PLATING OPTION" UNDERPLATE 1.27  $\mu\text{m}$  OF NICKEL
3. PART MUNBER CODE:  
10132920- 10XLF

LEAD FREE  
PLATING OPTION

1. 5.08  $\mu\text{m}$  MIN OF SILVER OVER AREA UNDERPLATE NICKEL
2. 2.5  $\mu\text{m}$  MIN OF TIN OVER AREA UNDERPLATE NICKEL

FINISHED HOLE DIAMETERS (MM)	
USE WITH PCB	USE WITH BUSBAR
1.015 $\pm$ .076	1.041 $\pm$ .05

spec ref	- SEE NOTE 1			dr	Li-Qing Lei	2016/05/09	projection 	mm	size	A3	scale	6:1			
tolerance std	ASME Y14.5M			eng	Li-Qing Lei	2016/06/22			product family	ecn no	-	rel level	Released		
TOLERANCES UNLESS OTHERWISE SPECIFIED				chr	-	-				EON Terminal	dwg no		10132920	rev	A
surface	linear	0.X	$\pm$ 0.1	appr	Tim Yao	2016/06/22									
		0.XX	$\pm$ 0.10				cat. no.	Product - Customer Drw		sheet 1 of 1					
	angular	0°	$\pm$ 2°												