

PRODUCT NUMBER
77709-YXXLF

RoHS COMPLIANT & COMPATIBLE, SEE NOTE 8

PIN STYLE SEE TABLE SHEET 2

PLATING:

1 = 0.76µm FULL GOLD/GXT

3 = 2.0µm MIN MATTE TIN FULL PLATED

7 = 0.13µm FULL GOLD - ONLY AVAILABLE UPON REQUEST

8 = 0.38µm FULL GOLD/GXT - ONLY AVAILABLE UPON REQUEST

G = 0.25µm GOLD/GXT ON CONTACT AREA, 2µm MIN MATTE TIN ON TAIL

1.27µm NICKEL MIN UNDERLAYER FOR ALL PLATING VERSIONS

NOTES:

1. HOUSING MAT'L : HIGH TEMPERATURE THERMOPLASTIC
FLAME RETARDANT PER UL94-V0, COLOR BLACK.

2. PIN MATERIAL : PHOSPHOR BRONZE.

3. STANDARD PACKAGING IN POLYBAG

4. RoHS COMPATIBLE PRODUCT SPECIFICATIONS

a - SUFFIX "LF" IS ADDED JUST FOR EASY

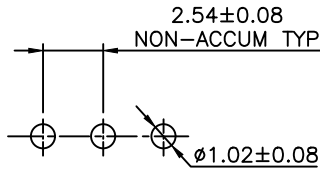
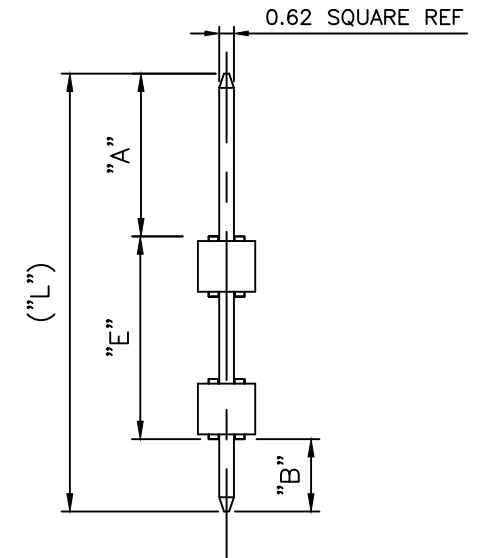
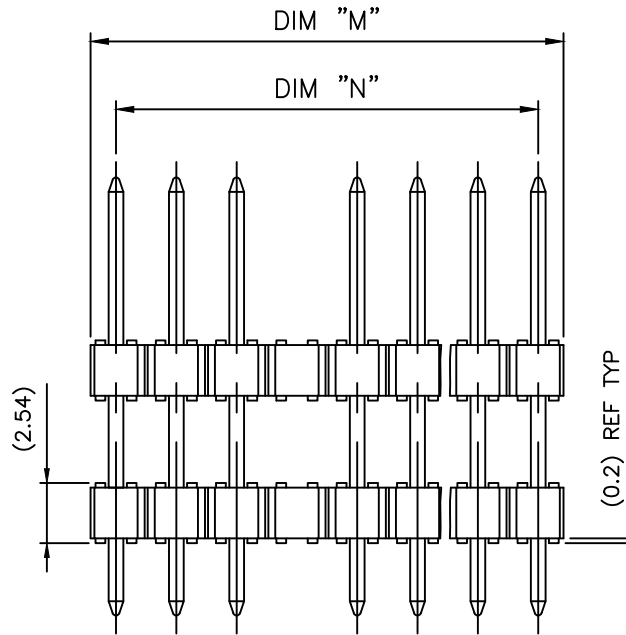
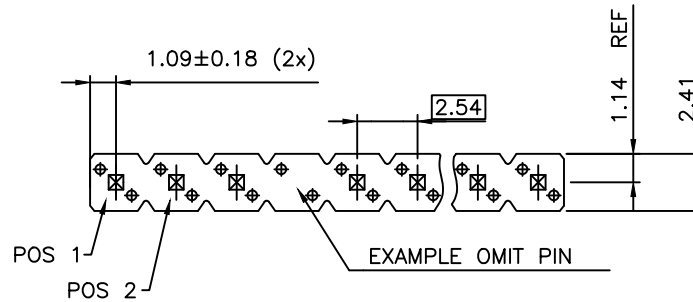
b - MANUFACTURING PROCESS COMPATIBILITY

- THE HOUSING WILL WITHSTAND EXPOSURE TO
260°C ±5°C SOLDER BATH TEMPERATURE FOR
5 SECONDS IN A WAVE SOLDER APPLICATION
WITH A 1.6mm MIN THICK CIRCUIT BOARD.

c - LABELING:

- MEETS PACKAGING SPECS AS PER GS-14-920

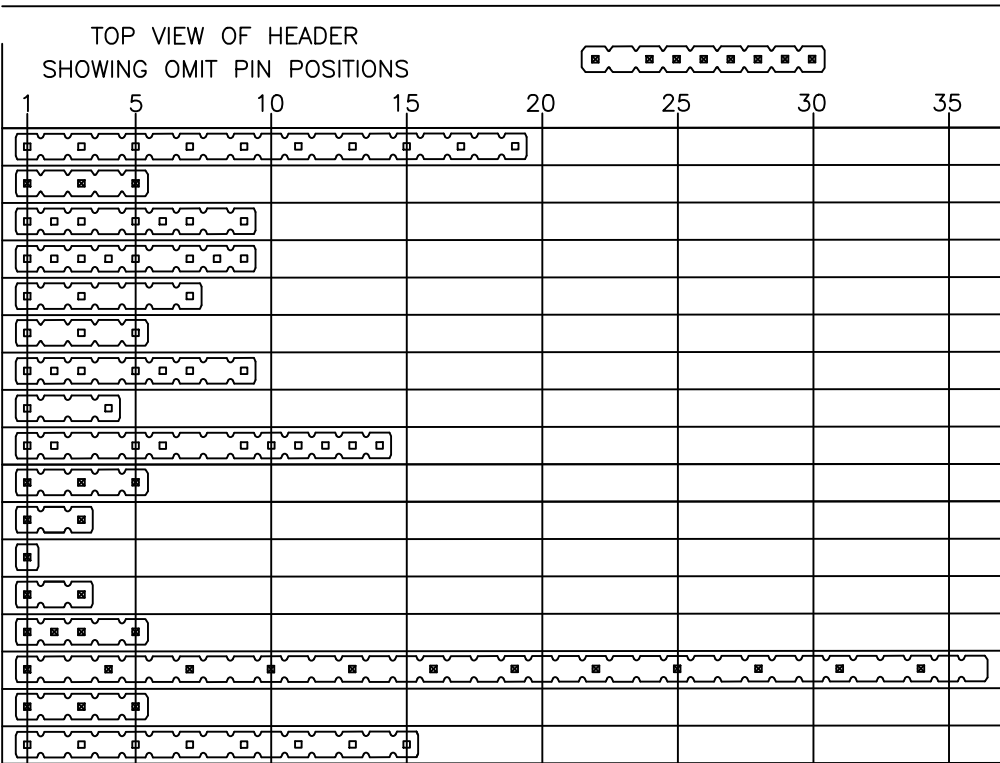
d - LEGAL STATEMENT: SEE GS-47-0004



RECOMMENDED HOLE PATTERN

mat'l. code		surface		tolerance		projection		product family	
		ISO 1302		ISO 406 ISO 1101		mm		BERGSTIK	
ltr		ecn no		date		tolerances unless otherwise specified		title	
						linear		HEADER SR,STR DOUBLE BODY POL	
Y		F-24446		AMA 16.07.05		scale 1:1		dwg no	
AA		F-26438		LMU 17.03.22		dr O MATHEVON 96.04.01		sheet 1 of 2	
AB		F-28033		DDE 17.09.25		enr COMPAGNON.J 96.04.01		size	
AC		F-31692		LMU 18.10.22		chr JCO 96.04.01		77709	
AD		F-47134		DDE 23.01.30		appd JMC 96.04.01		A3	
sheet		revision		AD		AB		type	
index		sheet		1		2		CUSTOMER Drawing	

PIN STYLE	NB OF POS	PRODUCT DEFINITION					
		"A" ±0.2	"E" ±0.25	"B" ±0.25	("L") REF	("M") REF	("N") REF
21	1x 19	3.0	20.3	2.75	26.04	48.26	45.72
22	1x 05	4.95	6.00	4.95	15.90	12.70	10.16
23	1x 09	4.95	6.00	4.95	15.90	22.86	20.32
24	1x 09	3.10	11.45	3.10	17.65	22.86	20.32
25	1x 07	3.10	11.45	3.10	17.65	17.78	15.24
26	1x 05	8.60	6.00	8.60	23.20	12.70	10.16
27	1x 09	8.60	6.00	8.60	23.20	22.86	20.32
28	1x 04	15.20	12.00	3.60	30.80	10.16	7.62
29	1x 14	15.20	12.00	3.60	30.80	35.56	33.02
30	1x 05	3.00	13.00	3.00	19.00	12.70	10.16
31	1x 03	3.05	6.50	3.05	12.60	7.62	5.08
32	1x 01	3.05	6.50	3.05	12.60	2.54	N/A
33	1x 03	3.05	5.08	3.05	11.18	7.62	5.08
34	1x 05	7.36	11.43	2.29	21.08	12.70	10.16
35	1x 36	8.07	20.00	3.05	31.12	91.44	88.90
36	1x 05	2.75	15.50	2.75	21.00	12.70	10.16
37	1x 15	2.80	59.40	2.80	65.00	38.10	35.56



A

B

C

D

A

B

C

D



FCIconnect.com

Copyright FCI

mat'l. code		surface ISO 1302 <input checked="" type="checkbox"/>		tolerance ISO 406 ISO 1101		projection 		product family BERGSTIK	
ltr	ecn no	dr	date	tolerances unless otherwise specified					
X	F-26438	LMU	17.03.22	angles		linear		title HEADER SR,STR DOUBLE BODY POL	
Y	F-28033	DDE	17.09.25	mm		scale 1:1		dwg no 77709	
AA	F-31692	LMU	18.10.22	dr		O MATHEVON 96.04.01		sheet 2 of 2 size A3	
AB	F-47134	DDE	21.01.30	enr		COMPAGNON.J 96.04.01		type CUSTOMER Drawing	
				chr		JCO 96.04.01			
W	F-24446	AMA	16.07.05	appd		JMC 96.04.01			
sheet	revision								
index	sheet								

