

Marvell ARMADA

ClearFog Pro

Carrier Board for ARMADA SoM (System-On-Module)



Simple. Robust. Computing Solutions

SolidRun Ltd.

3 Dolev st., 3rd floor, P.O. Box 75
Migdal Tefen 2495900, Israel.

www.solid-run.com

Overview

Introducing the ClearFog family, a flexible IoT gateway platform which harnesses the full potential and robust processing power of the ARMADA SoC – providing a modular powerful board with endless possibilities. With the ARMADA processor at its core, the ClearFog offers both optimal modulation and fast processing speeds, cutting development costs, TTM and simplifying production process.

ClearFog Pro Highlighted Features:

- Based on Marvell's ARMADA A388 SoC
- Optimized for networking, routing and storage applications
- Optional industrial metal enclosure, perfect for OEMs
- Feature rich
- Extensive SW support

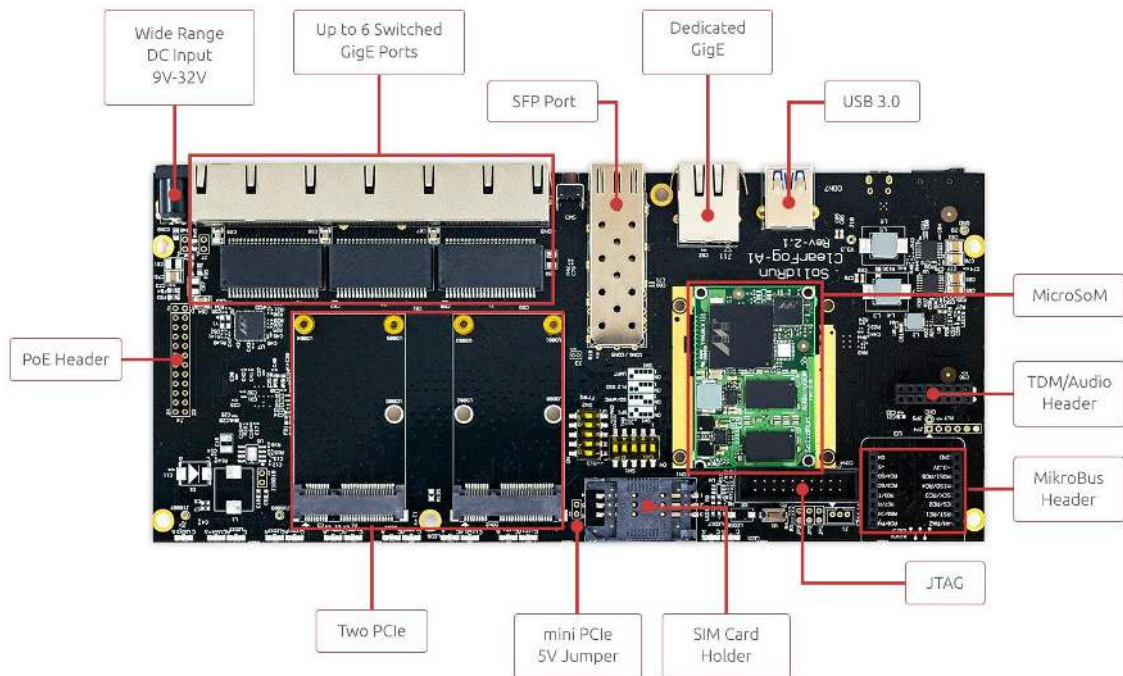
System Specifications

System on Chip	ClearFog Pro
SoM Model	ARMADA based A380/A388
Memory and Storage	256MB (A380) / 1GB (A388) M.2 8GB uSD / 4GB eMMC* (Optional)
Connectivity	2x mSATA/mPCIe 1x USB 3.0 port 1x Port dedicated Ethernet 6x Port switched Ethernet 1x SFP
I/O and Misc.	Analog Audio / TDM module support GPIO Header (mikroBUS) Indication LEDs User Push Buttons PoE expansion header RTC Battery FTDI (Console Only) / Debug Header JTAG Header
OS Support	Linux Kernel 3.x, OpenWrt, Yocto
Power	Wide range 9V- 32V Advanced Power Control Fan Control
Dimensions (WxL)	225mmx100mm
Environment	Optional Metal Enclosure

(*) Assembly option on the SoM.

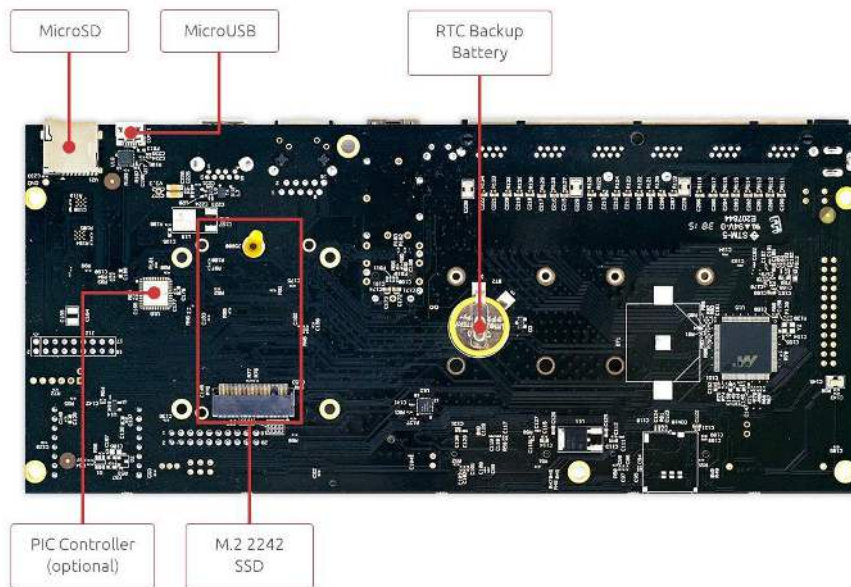
Interfaces

Top View

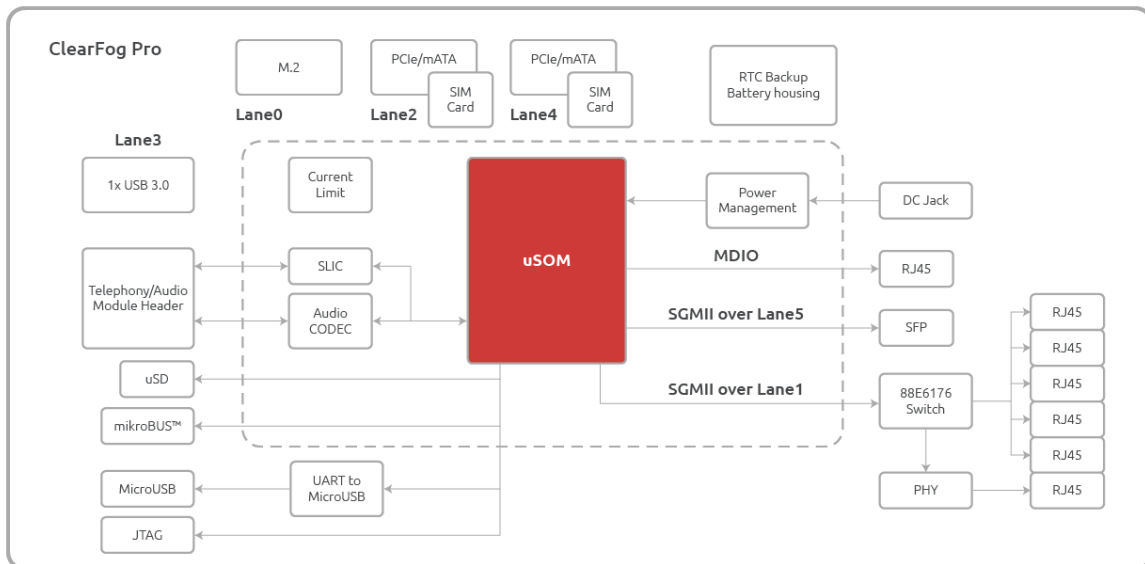


Interfaces

Bottom View



Block Diagram



Ordering Information

SKU Format*

cfa2-p-yyy-cc-xxx-v

(*) For ordering different temperature grade versions please contact us directly

Legend

	Meaning	Options	Description
cf	Product Family	none	Fixed parameter- ClearFog Family
a2	MicroSoM Type	a2	?
p	Carrier Type	p	ClearFog Carrier Pro
yyy	Power Adapter	000	No power adapter
		110	US/Japan power adapter
		220	EU power adapter
cc	SD Card	00	No 8GB SD Card
		08	Include 8GB SD Card
000	eMMC*	000	No eMMC
		004	4GB eMMC
v	Enclosure	0	No Enclosure
		e	Include Enclosure

(*) Assembly option on MicroSoMA388.

Example: cfa2-p-220-08-000-e

Description: ClearFog Carrier Pro + MicroSoM A388 + 220V power adapter + 8GB SD Card + Enclosure.

Safety notice

- a. This device is to be used with Certified Power adaptor with output rated 5VDC, 3A. Power adapter must meet Limited power source (LPS) requirements.
- b. Power adapter must meet local safety standards and requirements based on product intended use.
- c. Power adapter must meet Operating environment conditions as specified above.

Disposal

Follow local regulations regarding disposal of the product. Dispose of your product in accordance with local regulations. In some areas, the disposal of these items in household or business trash may be prohibited.

Help us protect the environment- recycle!

IMPORTANT NOTICE – Please Read Carefully

No warranty of accuracy is given concerning the contents of the information contained in this document. To the extent permitted by law no liability (including liability to any person by reason of negligence) will be accepted by SolidRun Ltd. Or its employees for any direct or indirect loss or damage caused by omissions from or inaccuracies in this document.

SolidRun Ltd. Reserves the right to change details in this publication without notice

Product and company names herein may be the trademarks of their respective owners.

Information in this document supersedes and replaces information previously supplied in any prior versions of this document.

Support

For technical support please visit:

Our Wiki – <http://wiki.solid-run.com/>

Our Forums - <http://forum.solid-run.com/>

For direct support please contact us at: support@solid-run.com

© 2016 SolidRun – All rights reserved.