

LF Receiver Antenna CAS143



Description

- Compact LF receiver antenna (3D).
- Covered by over-molding
- High Sensitivity and Reliability.
- L × W × H: 15.0 × 13.7 × 4.0 mm Max.
- Product weight: 1.86g Ref..
- RoHS compliance.

Environmental Data

- Operating temperature range: -40°C~+85°C
- Storage temperature range: -40°C~+100°C

Packaging

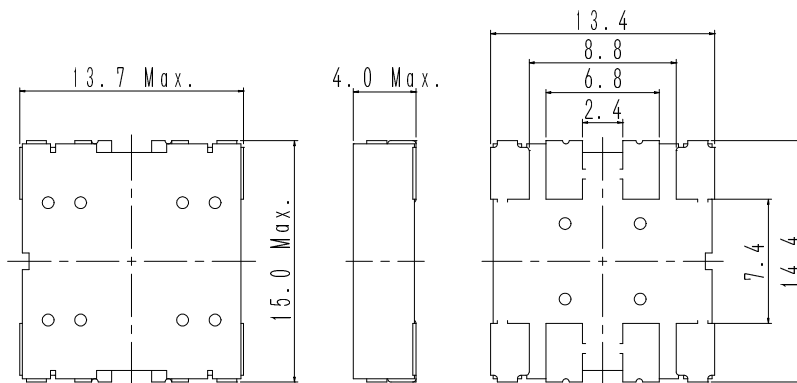
- Carrier Tape and Reel.
- Tape specification according to EIA481.
- 500pcs/reel.

Applications

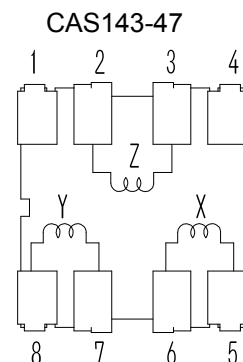
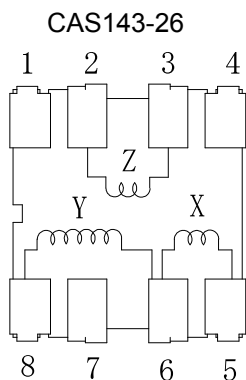
- PEPS, Smart key system.
- Security system



Dimension - [mm]



Schematic diagram (2 kinds)



LF Receiver Antenna CAS143



Electrical Characteristics

Part number	Item	5-6 (X-axis)	8-6 (Y-axis)	2-3 (Z-axis)	Measuring condition
CAS143-26	Inductance	2.66mH±5%	2.66mH±5%	3.8mH±5%	134.2kHz, 1Vac
	Unloaded Q	44 (typ.)	41 (typ.)	45 (typ.)	134.2kHz, 1Vac
	S.R.F	1000kHz (typ.)	800kHz (typ.)	600kHz (typ.)	
CAS143-47	Item	5-6 (X-axis)	7-8 (Y-axis)	2-3 (Z-axis)	
	Inductance	4.7mH±5%	4.7mH±5%	7.2mH±5%	125kHz, 1Vac
	Unloaded Q	47 (typ.)	45 (typ.)	50 (typ.)	125kHz, 1Vac
	S.R.F	800kHz (typ.)	800kHz (typ.)	500kHz (typ.)	

* It is possible for different inductance value.

For more information, please browse our website <http://www.sumida.com>

Hong Kong

Tel.+852-2880-6688
FAX.+852-2565-9600

Tokyo

Tel.+81-3-5202-7112
FAX.+81-3-5202-7105

Chicago

Tel.+1-847-545-6700
FAX. +1-847-545-6720

Shanghai

Tel.+86-021-5836-3299
FAX.+86-021-5836-3266

Seoul

Tel.+82-2-6237-0777
FAX.+82-2-6237-0778

Obernzell

Tel.+49-8591-937-0
FAX. +49-8591-937-103

Shenzhen

Tel.+86-755-8291-0228
FAX.+86-755-8291-0338

Singapore

Tel.+65-6296-3388
FAX.+65-6296-3390

Neumarkt

Tel.+49-9181-4509-110
FAX. +49-9181-4509-310

Taipei

Tel.+886-2-8751-2737
FAX.+886-2-8751-2738

San Jose

Tel.+1-408-321-9660
FAX.+1-408-321-9308