

**Technical specification:**

Rated voltage: 3pos 4pos  
IEC 61076-2-104 60 V 30 V

Current rating: 3 A bei 40°C  
IEC 61076-2-104

Insulation resistance: >=100 MΩ  
IEC 60512

Pollution degree: 3/2  
IEC 60664-1

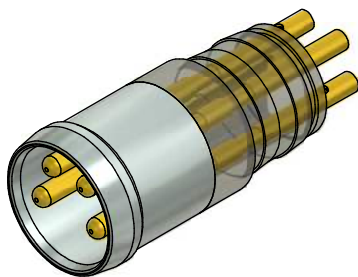
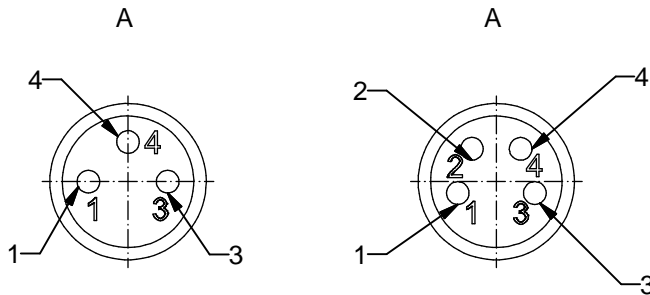
Degree of protection: IP 67, in mated condition  
IEC 60529

Temperature range: -30°C ... +85°C  
IEC 60664-1

Mating cycles: >=100  
IEC 60512-9a

**Materials:**

Contact: CuZn  
Contact plating: Nickel, gold plated  
Contact carrier: PA , UL 94  
Socket housing: CuZn, Nickel plated



Part no:	Description:	Pos
42-01002	SAL - 8 - ESTM3 - L	3
42-01003	SAL - 8 - ESTM4 - L	4

DO NOT ALTER CAD DRAWING BY HAND Directive 2002/95/EC RoHS compliant	Index: a 02.03.11 fro Ä3914 Data sheet revised	dim. in mm	title: <b>Male socket M8x1 with soldering version</b>									
				<table border="1"> <thead> <tr> <th></th> <th>date</th> <th>name</th> </tr> </thead> <tbody> <tr> <td>drawn</td> <td>15.10.08</td> <td>Fromm</td> </tr> <tr> <td>appd.</td> <td>15.10.08</td> <td>Mankopf</td> </tr> </tbody> </table>		date	name	drawn	15.10.08	Fromm	appd.	15.10.08
		date		name								
	drawn	15.10.08		Fromm								
appd.	15.10.08	Mankopf										
THIS DRAWING MAY NOT BE COPIED OR REPRODUCED IN ANY WAY, AND MAY NOT BE PASSED ON TO A THIRD PARTY WITHOUT WRITTEN PERMISSION. OWNERSHIP AND COPYRIGHT OF CONEC GmbH		dwg no:										
		<b>42K1A111</b>										
		part no:										