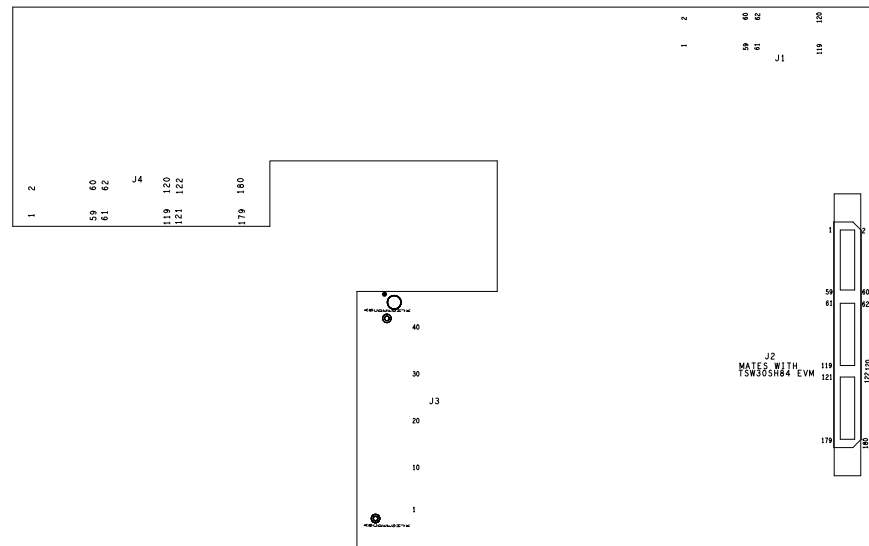


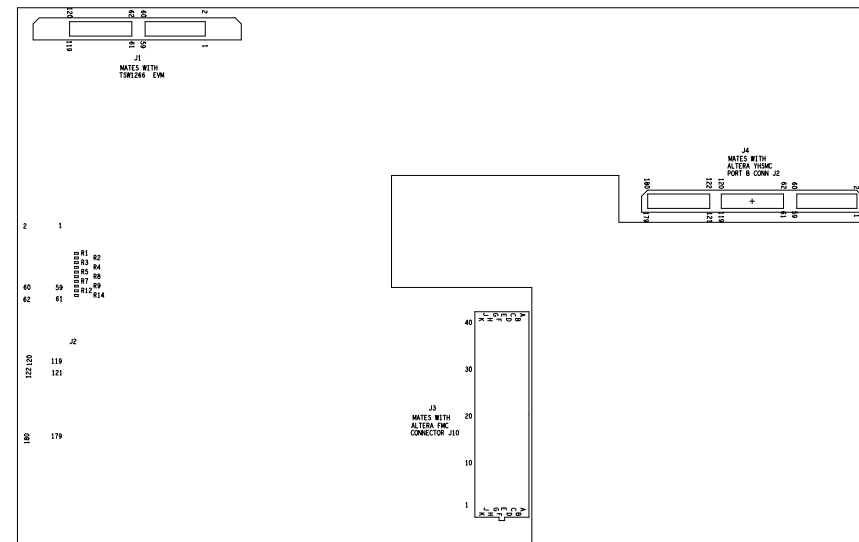
THIS DRAWING IS INTENDED TO HELP IN THE ASSEMBLY OF THE DESIGN.

1. REFER TO ODB++ FILE FOR SPECIFIC COMPONENT LOCATION INFORMATION.
2. USE WATER SOLUBLE FLUX DURING BOARD ASSEMBLY.
RoHS COMPLIANT AND LEAD FREE.

REVISIONS				
ZONE	LTR	DESCRIPTION	DATE	APPROVED



TOP SIDE



BOTTOM SIDE

UNLESS OTHERWISE SPECIFIED DIMENSIONS ARE IN INCHES TOLERANCES ARE: FRACTIONS DECIMALS ANGLES +/- .XX +/- .01 +/- +/- .XXX +/- .005 +/-	CONTRACT NO.		TEXAS INSTRUMENTS INC.			
	APPROVALS	DATE	ASSEMBLY DRAWING ARRIA V-TI ADAPTER			
	DRAWN J CANTRELL	05-11-12				
MATERIAL SEE NOTE 5	ENGR J SETON	05-11-12	SIZE B	CODE IDENT NO.	DRAWING NO.	REV. C
FINISH SEE NOTES 7, 8, 9	DO NOT SCALE DRAWING		SCALE NONE	SHEET 1 OF 1		