

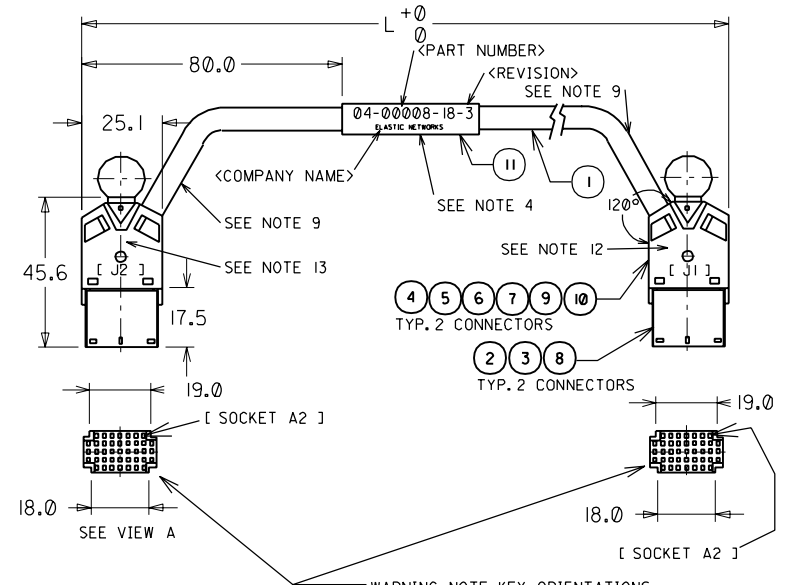
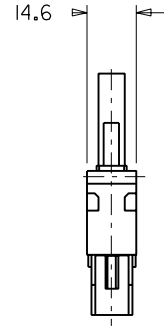
CABLING

<TIPS>

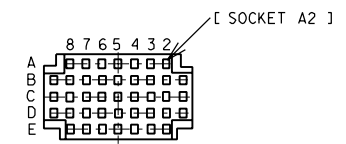
FROM CONN	FROM PIN NO.	WITH PAIR NO.	WITH WIRE COLOR	TO CONN	TO PIN NO.
J1	A2	T1	WHT/BLU	J2	A2
	D2	T2	WHT/ORG		D2
	A3	T3	WHT/GRN		A3
	D3	T4	WHT/BRN		D3
	A4	T5	WHT/SLT		A4
	D4	T6	RED/BLU		D4
	A6	T7	RED/ORG		A6
	D6	T8	RED/GRN		D6
	A7	T9	RED/BRN		A7
	D7	T10	RED/SLT		D7
	A8	T11	BLK/BLU		A8
	D8	T12	BLK/ORG		D8

<RINGS>

FROM CONN	FROM PIN NO.	WITH PAIR NO.	WITH WIRE COLOR	TO CONN	TO PIN NO.
J1	B2	R1	BLU/WHT	T2	B2
	E2	R2	ORG/WHT		E2
	B3	R3	GRN/WHT		B3
	E3	R4	BRN/WHT		E3
	B4	R5	SLT/WHT		B4
	E4	R6	BLU/RED		E4
	B6	R7	ORG/RED		B6
	E6	R8	GRN/RED		E6
	B7	R9	BRN/RED		B7
	E7	R10	STL/RED		E7
	B8	R11	BLU/BLK		B8
	E8	R12	ORG/BLK		E8



WARNING: NOTE KEY ORIENTATIONS
SEE NOTE 3



FACE VIEW OF CONNECTOR
CABLE SIDE OPPOSITE
SHOWING SOCKET NUMBERING
TYPICAL BOTH CONNECTORS
VIEW "A"

NOTES:

- UNLESS OTHERWISE SPECIFIED ALL DIMENSION ARE IN MILLIMETERS.
2 DECIMAL PLACES +/-0.254 ; ANGLES +/- 1°
- TO CONVERT INCHES TO MILLIMETERS USE 1 INCH= 25.40 MILLIMETERS
- CONNECTOR FACE IS KEYED BY DIMENSIONS SHOWN.
- LOCATE PRODUCT ID LABEL APROX. AS SHOWN, CABLE PART NUMBER, REVISION AND COMPANY NAME SHALL BE PRINTED ON LABEL AS SHOWN.
- UNASSIGNED
- UNASSIGNED
- CABLE ASSEMBLY SHALL BE 100% TESTED FOR SHORTCUTS AND CONTINUITY.
- UNASSIGNED
- APPLY WRAP AROUND LABEL ITEM II IN LOCATIONS SHOWN WITH CONNECTOR DESIGNATIONS STAMPED ON THE RESPECTIVE LABELS.
- USE HAND CRIMP TOOL FOR AWG 22-26, MOLEX PART NUMBER 69-008-1051 OR E01UV.
- SEE SEPARATE BILL OF MATERIAL E-85362-003
- APPLY LABEL ITEM II IN LOCATION SHOWN WITH THE FOLLOWING STAMPED ON LABEL: " RIGHT SIDE : FILTER "
- APPLY LABEL ITEM IN LOCATION SHOWN WITH THE FOLLOWING STAMPED ON LABEL: " RIGHT SIDE: MODEM "

MAT. NUMBER	L = (mm)
85362-0001	450
85362-0003	3500

EC NO. MC2001-0035 DRWN: KNoller 00/07/27 CHK: MF APPR: FB	QUALITY SYMBOLS MAJOR = CRITICAL = C =	GENERAL TOLERANCES: (UNLESS SPECIFIED) mm INCH 4 PLACES ±0. ±. 3 PLACES ±0. ±. 2 PLACES ±0. ±. 1 PLACE ±0. ±. ANGULAR: ± 1/2°	SCALE : DRAWN BY & DATE DONDREJ 00/06/09 CHECKED BY & DATE KN / / APPROVED BY & DATE FB / / CAD FILENAME	DESIGN UNITS <input checked="" type="checkbox"/> mm <input type="checkbox"/> INCH THIRD ANGLE PROJECTION	DIMENSIONS: <input type="checkbox"/> mm <input type="checkbox"/> INCH <input checked="" type="checkbox"/> mm ONLY SHT REV REVISE ON CAD ONLY
		DRAFT WHERE APPLICABLE MUST REMAIN WITHIN DIMENSIONS		TITLE: ASSY. CABLE. 5x7 ISU 2.5 TO 5x7 ISU 2.5 OMNIGRID MOLEX INCORPORATED	
		THIS DRAWING CONTAINS INFORMATION THAT IS PROPRIETARY TO MOLEX INCORPORATED AND SHOULD NOT BE USED WITHOUT WRITTEN PERMISSION.		MATERIAL NO. SEE CHART	DRAWING NO. SD-85362-001