

A

B

C

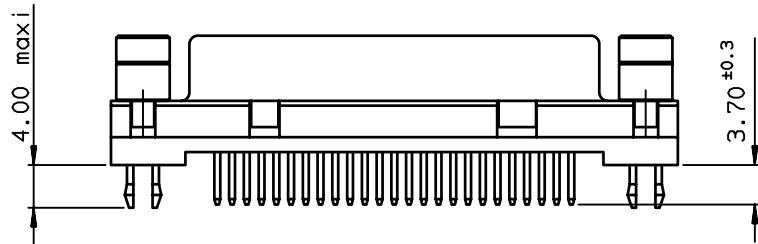
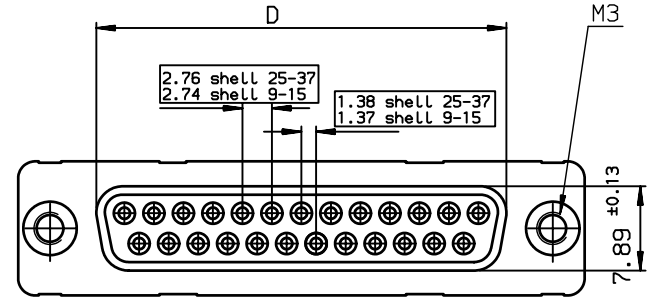
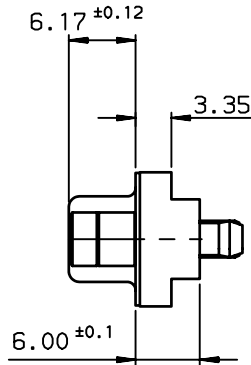
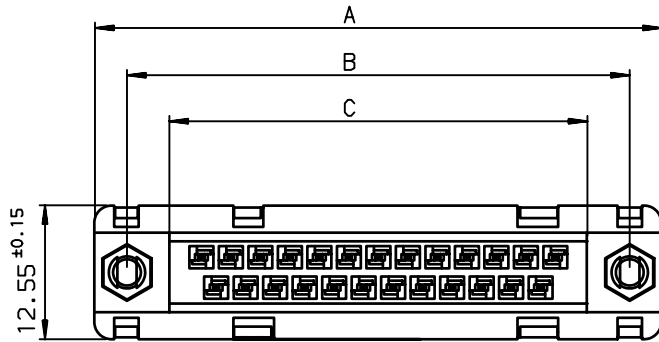
D

A

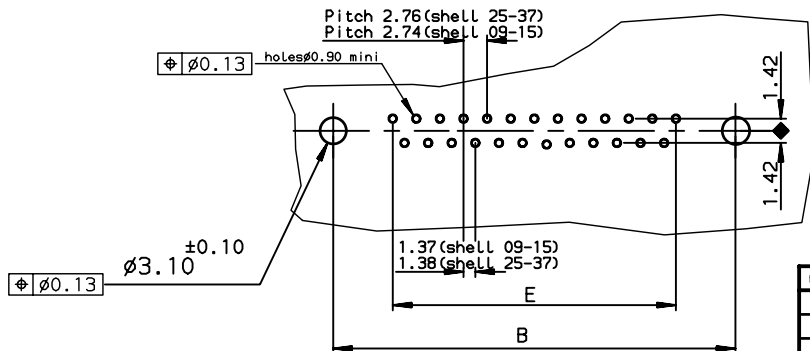
B

C

D



PC card drilling dimensions(after plating)  
(thickness 2.40±0.20mm)



TIN LEAD PART NUMBER

SHELL	A±0.38	B±0.12	C±0.10	D±0.25	E±0.07	PART NUMBER
09	30.81	24.99	16.96	16.21	10.96	D09S24B6G100
15	39.14	33.32	25.18	24.54	19.18	D15S24B6G100
25	53.03	47.04	39.12	38.25	33.12	D25S24B6G100
37	69.32	63.50	55.68	54.71	49.68	D37S24B6G100

LEAD FREE PART NUMBER

SHELL	A±0.38	B±0.12	C±0.10	D±0.25	E±0.07	PART NUMBER
09	30.81	24.99	16.96	16.21	10.96	D09S24B6G100LF
15	39.14	33.32	25.18	24.54	19.18	D15S24B6G100LF
25	53.03	47.04	39.12	38.25	33.12	D25S24B6G100LF
37	69.32	63.50	55.68	54.71	49.68	D37S24B6G100LF

GENERAL CHARACTERISTICS AND ROHS INFORMATIONS:  
SEE DRAWING C01-8646-0000

European Views

www.fciconnect.com		surface ISO 1302 ✓	tolerance std ISO 406 ISO 1101	projection mm
		TOLERANCES UNLESS OTHERWISE SPECIFIED		
Dr	PESSON	18/01/31	0.X ±0.1	size A3
Eng	PESSON	1997/08/25	0.XX ±0.1	Scale 2
Chr	LEGARE	1997/08/25	0.XXX ±0.1	ECN LS06-0089
Appr	LEGARE	1997/08/25	Product family	D-SUB Spec ref -
FCI title		FEMALE CONNECTOR STD EURO		dwg no C01-8646-0553
		STRAOUGHT SOLDER TYPE FOR		Rev. D
catalog no				CUSTOMER sheet 1 of 1

rev	ecn no	dr	date
A	-	MPE	1997/08/25
B	LS05-001	MPE	2005/03/14
C	LS05-0056	MPE	2005/06/24
D	LS06-0089	MPE	2006/06/12
-	-	-	-
-	-	-	-
-	-	-	-



Copyright FCI.