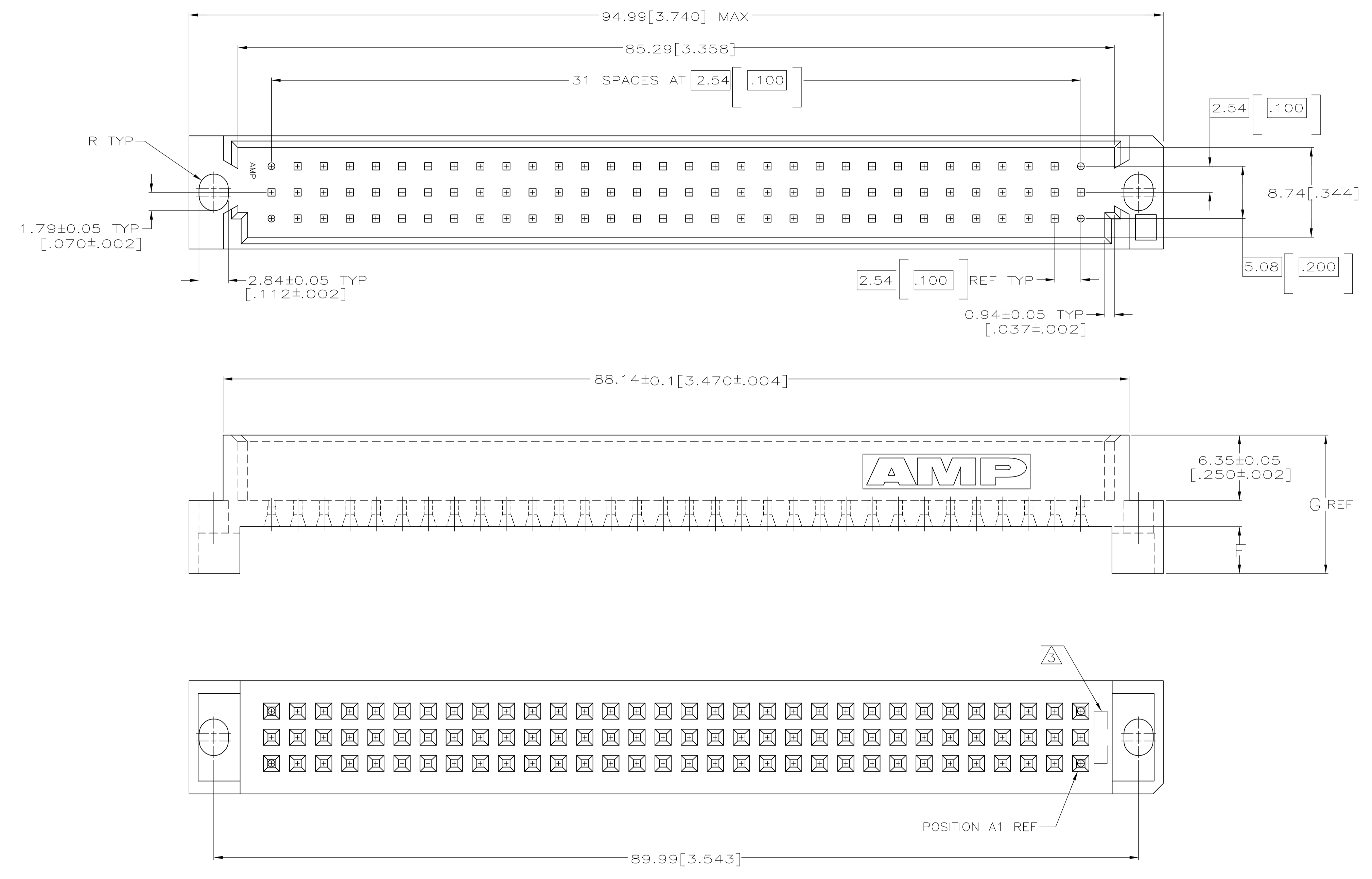
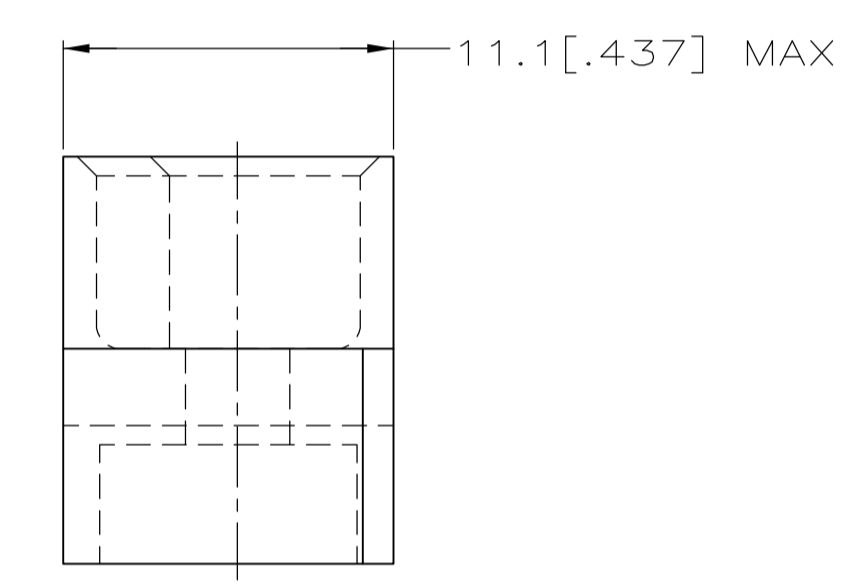


LOC		DIST		REVISIONS			
AD	00	REV	PER	DESCRIPTION	DATE	DWN	APVD
H				REV PER EC 0512-0283-05	30NOV05	BC	AS



- 1. HOUSING MATERIAL: GLASS-FILLED POLYESTER. COLOR: GRAY.
- 2. INTERFERENCE CAVITIES LOCATED AT POSITIONS 1,32 IN ROWS "A" AND "C".
- 3. AMP PART NUMBER MOLDED IN THIS APPROXIMATE AREA.



OBSOLETE	16.99 [.669]	2.36 [.093]	16.05 [.632]	7.16 [.282]	535074-4
OBSOLETE	13.23 [.521]	2.36 [.093]	12.32 [.485]	3.43 [.135]	535074-3
	16.99 [.669]	3.18 [.125]	15.24 [.600]	6.35 [.250]	535074-2
	13.23 [.521]	3.18 [.125]	11.43 [.450]	2.54 [.100]	535074-1
	CONNECTOR TAIL LENGTH	PC BOARD THICKNESS	G	F	PART NUMBER

THIS DRAWING IS A CONTROLLED DOCUMENT.

DIMENSIONS: INCHES	TOLERANCES UNLESS OTHERWISE SPECIFIED:	0 PLC ± -	1 PLC ± -	2 PLC ± -	3 PLC ± 0.13[.005]	4 PLC ± -	ANGLES ± -	FINISH -
DWN: L. BRINER 10/6/89 CHK: R. PATTERSON 7/21/89 APVD: -		<b>tyco</b> Electronics		Tyco Electronics Corporation Harrisburg, PA 17105-3608				
PRODUCT SPEC - APPLICATION SPEC -		SIZE: A1 CAGE CODE: 00779 DRAWING NO: 535074		SHROUD, EUROCARD WITH MOUNTING HOLES RESTRICTED TO: -				
MATERIAL: 1		WEIGHT: -		CUSTOMER DRAWING				
		SCALE: 4:1		SHEET: 1 OF 1				