

**SPECIFICATIONS:**

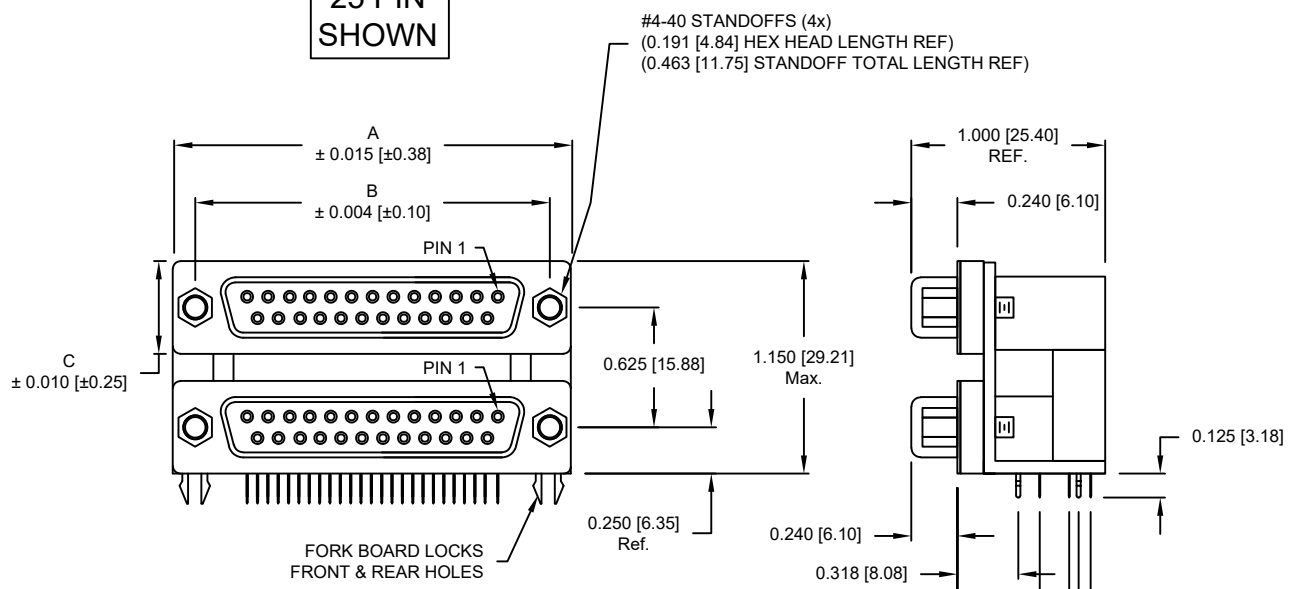
**ELECTRICAL:**

INSULATION RESISTANCE: 1000 Ω MIN.  
 DIELECTRIC WITHSTANDING VOLTAGE: 1000 VAC FOR 1 MIN  
 CURRENT RATING: 5 AMPS  
 OPERATING TEMPERATURE: -55°C TO +105°C

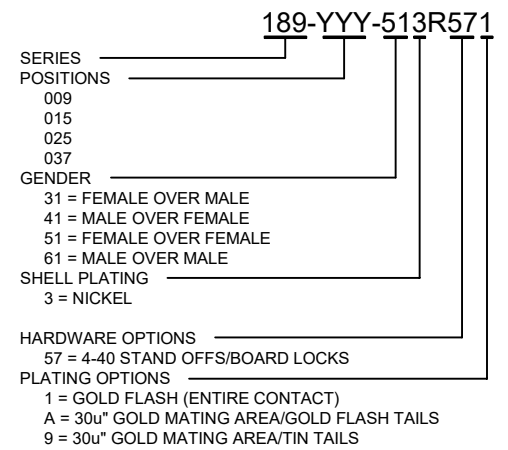
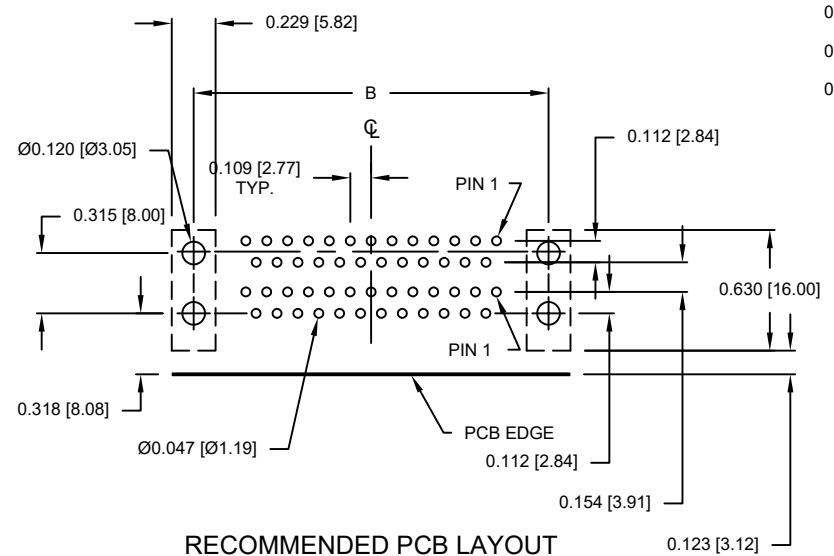
**MATERIALS:**

CONTACTS: BRASS  
 CONTACT PLATING: GOLD PLATED ENTIRE CONTACT  
 INSULATOR: UL94V-0 RATED, BLACK PA9T  
 260°C PROCESS TEMP.  
 SHELL: NICKEL PLATED STEEL

**25 PIN  
SHOWN**



POS	DIMENSIONS			
	9	15	25	37
A	1.204 [30.58]	1.535 [38.99]	2.078 [52.78]	2.724 [69.19]
B	0.984 [24.99]	1.312 [33.32]	1.850 [46.99]	2.500 [63.50]
C	0.494 [12.55]	0.494 [12.55]	0.494 [12.55]	0.494 [12.55]



RoHS COMPLIANT

UNITS = inch [mm]

DO NOT SCALE FROM DRAWING



THESE DRAWINGS AND SPECIFICATIONS ARE THE PROPERTY OF NorComp AND SHALL NOT BE REPRODUCED, COPIED OR USED AS THE BASIS FOR THE MANUFACTURE OR SALE OF APPARATUS WITHOUT WRITTEN PERMISSION.

DRAWN:  
**C. SMITH**  
 DATE:  
**03/30/2007**

**NorComp**

SCALE: NTS	SHEET 1	OF 1	REV 10
DWG NO. <b>189-YYY-513R571</b>			