



R-FLEX™

Multipurpose Coupling System

SPECIFICATIONS

- **Compensates for sensor shaft misalignments**
- **Compatible with all our RVDTs & RVITs**
- **Mates to multiple shaft sizes**
- **Machined from high-strength aluminum alloy**
- **Light weight**

The R-Flex coupling system is a versatile, easily installed coupling device that corrects for most types of angular sensor shaft misalignments. R-Flex provides excellent hysteresis-free repeatability. The unique six-beam R-Flex coupling adapter design provides superior performance under the most severe misalignment conditions. R-Flex is the perfect coupling for all our angular sensors as it does not degrade the repeatability or resolution. The coupling adapter is machined from high strength, yet flexible, aluminum alloy (black anodized). Its six-beam construction prevents windup under most operating conditions and virtually eliminates coupling induced phase lag in high speed closed loop control applications. Four (4) provided insert bushings allow mating the sensors with five (5) different shaft diameters.

FEATURES

- Mates to five (5) shaft sizes
- Integral clamps
- Six-beam construction
- Eliminates windup
- Hysteresis free
- Machined from aluminum alloy
- Anodized (Black) for corrosion protection
- Light weight

APPLICATIONS

- Use with all our RVDTs and RVITs
- For correction of:
 - Angular misalignment
 - Parallel misalignment
 - Skewed misalignment
 - Axial motion
 - Rotary oscillation
- Ideal for high speed closed loop controls

PERFORMANCE SPECIFICATIONS

| Dimensions | |
|----------------------------|------------------------|
| Outside Diameter | 0.75" [19.05 mm] |
| Length | 0.75" [19.05 mm] |
| Clamping Length | .2" [5 mm] |
| Sensor Shaft Diameter (B1) | 3/16" (0.1875") [4.76] |
| Mating Shaft Diameters: | |
| With 0.187 Insert Bushing | 3/16" (0.1875") [4.76] |
| With 5mm Insert Bushing | 0.197" [5mm] |
| With 6mm Insert Bushing | 0.236" [6mm] |
| With 0.250 Insert Bushing | 0.250" [6.35mm] |
| Without Insert Bushing | 0.394 [10mm] |

| Misalignment Correction | |
|-------------------------|----------------|
| Angular Offset | 2 degrees |
| Parallel Offset | .005" [0.13mm] |
| Axial Motion | .005" [0.13mm] |

| Construction | |
|---------------------------|------------------------------|
| Coupling Adapter Material | 2024-T3.51 or 7075-T6 |
| Coupling Adapter Finish | Black anodized |
| Insert Bushing Material | G10 Phenolic (natural color) |

DIMENSIONS

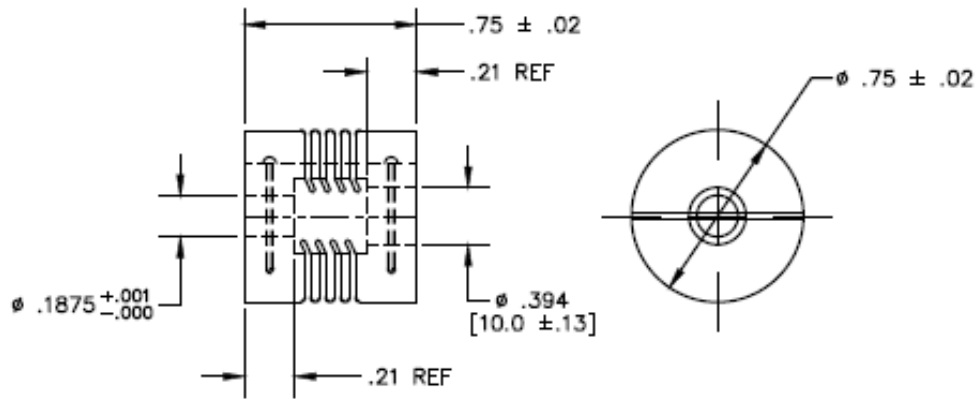
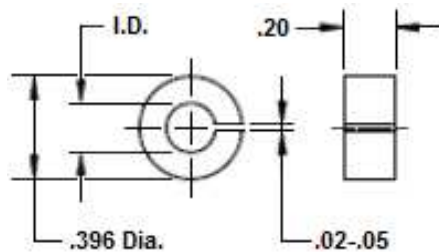


Figure 1: Coupling Adapter (Dimensions in inch [mm])



| INSERT NUMBER | I.D. (inch) | I.D. (mm) |
|---------------|-------------|-----------|
| 0.187 | 0.1895 | 4.813 |
| 5mm | 0.1988 | 5.050 |
| 6mm | 0.2382 | 6.050 |
| 0.250 | 0.2520 | 6.401 |

Figure 2: Insert Bushing (Dimensions in inch [mm])

ORDERING INFORMATION

The R-Flex™ system includes the coupling adapter, four (4) insert bushings and two (2) clamping screws.

Part Number: 66530072-000

NORTH AMERICA

Measurement Specialties, Inc.,
a TE Connectivity Company
1000 Lucas Way
Hampton, VA 23666
United States
Phone: +1-800-745-8008
Fax: +1-757-766-4297
Email: customercare.hmpt@te.com

EUROPE

MEAS Deutschland GmbH (Europe)
a TE Connectivity Company
Hauert 13
D-44227 Dortmund
Germany
Phone: +49-(0)231-9740-0
Fax: +49-(0)231-9740-20
Email: customercare.dtmd@te.com

ASIA

Measurement Specialties (China), Ltd.,
a TE Connectivity Company
No. 26 Langshan Road
Shenzhen High-Tech Park (North)
Nanshan District, Shenzhen 518057
China
Phone: +86-755-33305088
Fax: +86-755-33305099
Email: customercare.shzn@te.com

TE.com/sensorsolutions

Measurement Specialties, Inc., a TE Connectivity company.

Accustar, American Sensor Technologies, AST, ATEXIS, DEUTSCH, IdentiCal, TruBlue, KPSI, Krystal Bond, Microfused, UltraStable, Measurement Specialties, MEAS, Schaevitz, TE Connectivity, TE, and the TE connectivity (logo) are trademarks of the TE Connectivity Ltd. family of companies. Other logos, product and company names mentioned herein may be trademarks of their respective owners.

The information given herein, including drawings, illustrations and schematics which are intended for illustration purposes only, is believed to be reliable. However, TE Connectivity makes no warranties as to its accuracy or completeness and disclaims any liability in connection with its use. TE Connectivity's obligations shall only be as set forth in TE Connectivity's Standard Terms and Conditions of Sale for this product and in no case will TE Connectivity be liable for any incidental, indirect or consequential damages arising out of the sale, resale, use or misuse of the product. Users of TE Connectivity products should make their own evaluation to determine the suitability of each such product for the specific application.

© 2015 TE Connectivity Ltd. family of companies All Rights Reserved.