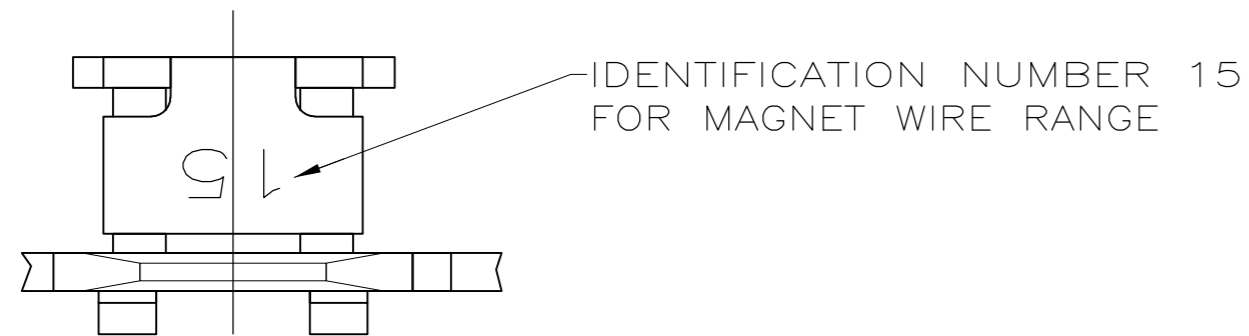
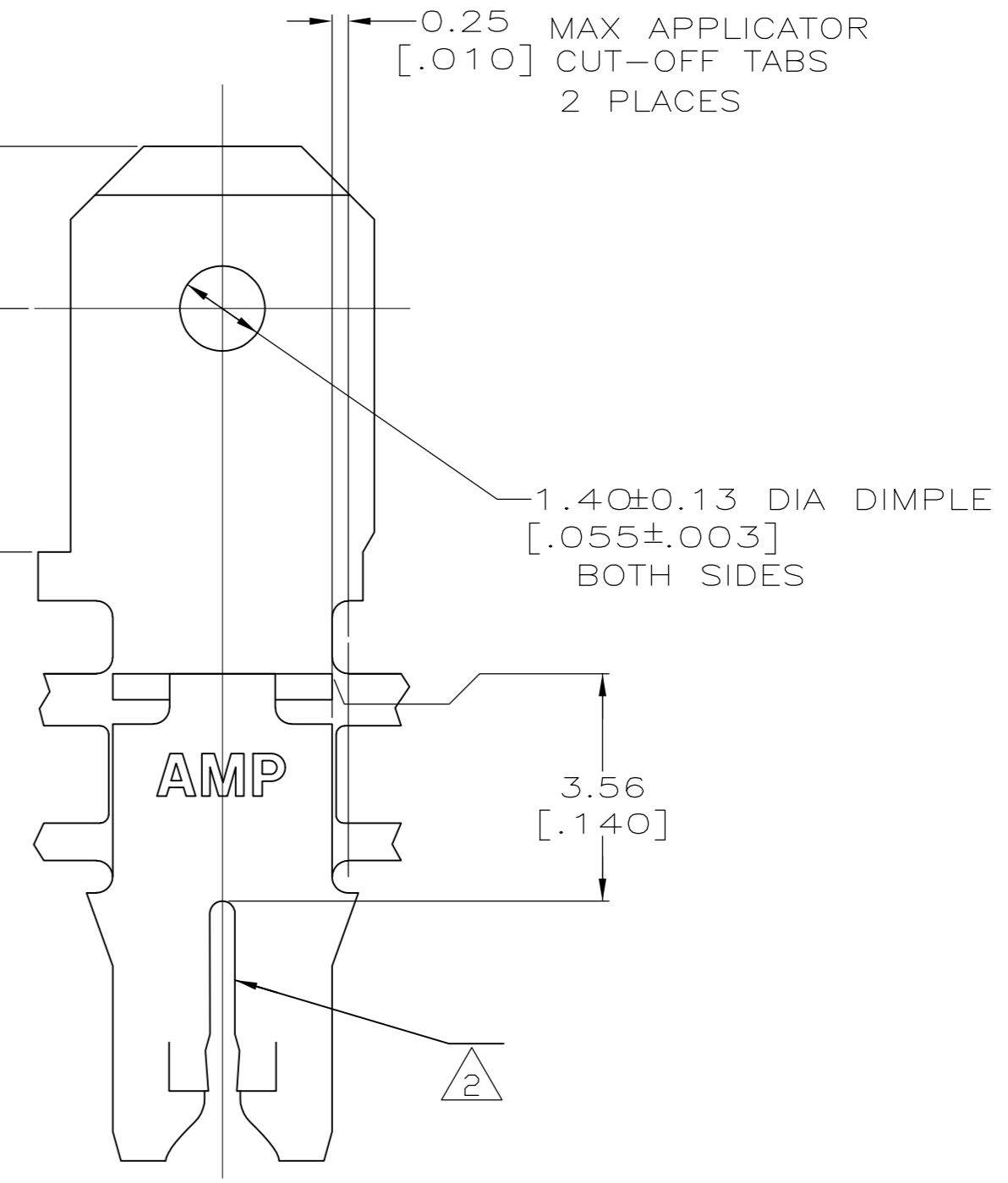
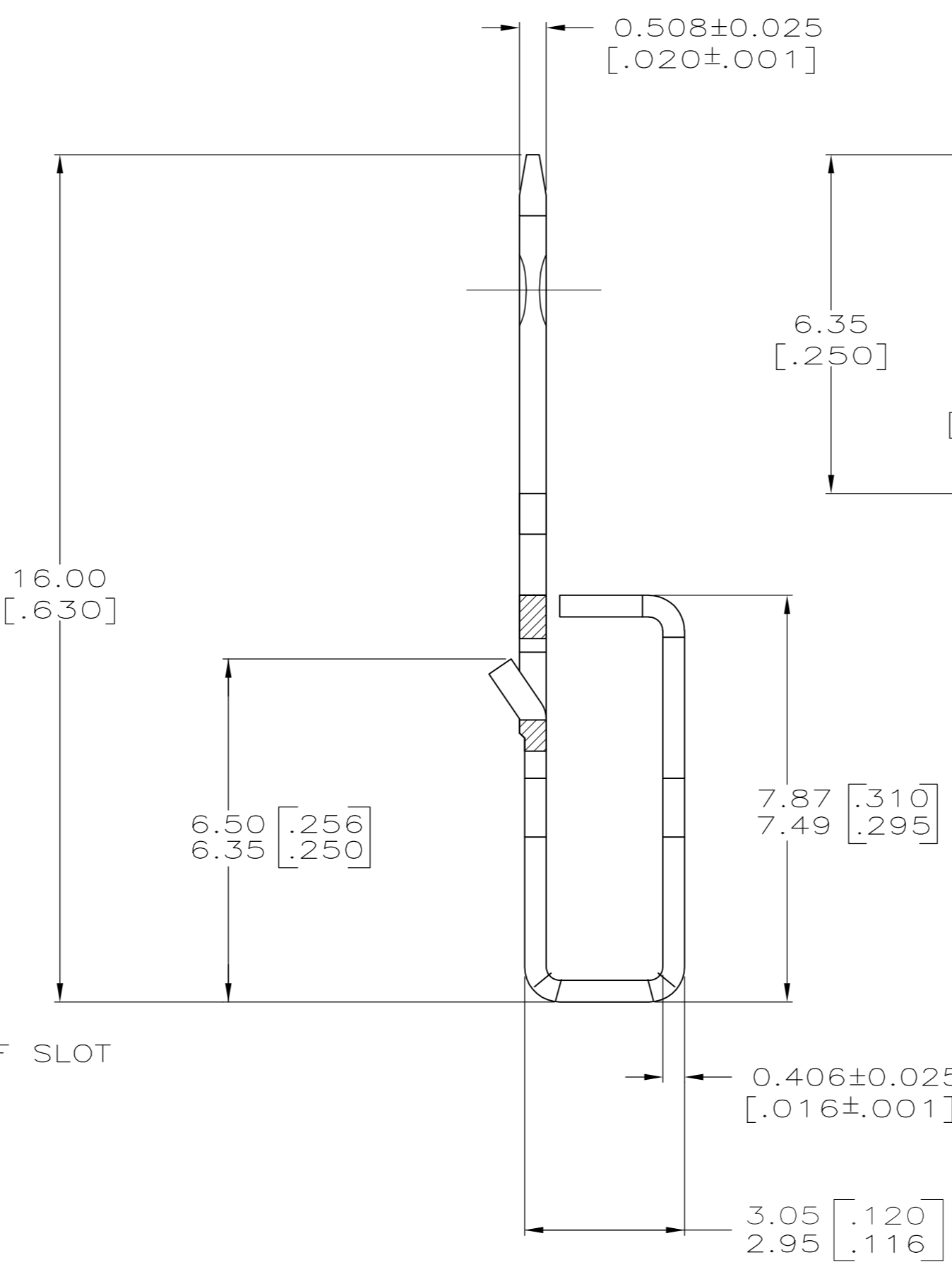
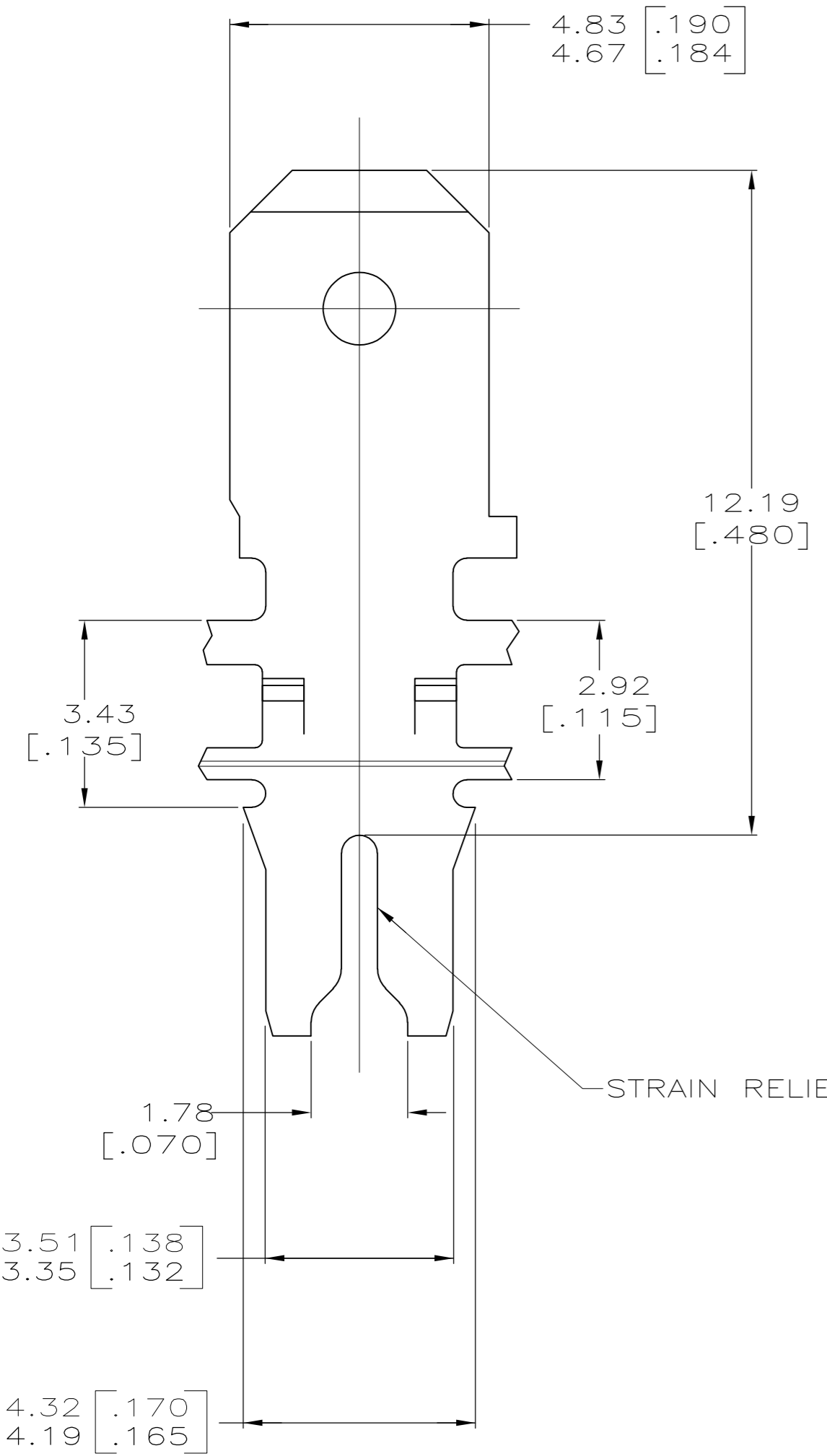


THIS DRAWING IS UNPUBLISHED. RELEASED FOR PUBLICATION  
 © COPYRIGHT - By - ALL RIGHTS RESERVED.

LOC		DIST		REVISIONS			
P	LTR	DESCRIPTION		DATE	DWN	APVD	
AF	50	D2	ECR-15-005665	10AUG2015	BDA	PKS	



- 1 CONTINUOUS STRIP ON REELS (SPLICE FREE) WITH TERMINALS LOCATED ON 5.59±0.08 [.220±.003] CENTERS.
- 2 SLOT TERMINATES A SINGLE MAGNET WIRE ONLY. COPPER RANGE: 0.54-0.81mm [#23.5-#20] AWG. ALUMINUM RANGE: 0.72-0.91mm [#21-#19] AWG. ALUMINUM WIRE RANGE APPLIES FOR POST-TIN PLATED VERSIONS ONLY.



STRAIN RELIEF SLOT

AMP

1217004-1  
PART NUMBER

THIS DRAWING IS A CONTROLLED DOCUMENT.		DWN 15JUL97 MICHAEL S. FEHER														
DIMENSIONS: INCHES		CHK 15JUL97 RICHARD GRZYBOWSKI														
TOLERANCES UNLESS OTHERWISE SPECIFIED:		APVD 15JUL97 KURT RANDOLPH	NAME													
<table border="1"> <tr><td>0 PLC</td><td>± -</td></tr> <tr><td>1 PLC</td><td>± -</td></tr> <tr><td>2 PLC</td><td>± 0.25 [.010]</td></tr> <tr><td>3 PLC</td><td>± -</td></tr> <tr><td>4 PLC</td><td>± -</td></tr> <tr><td>ANGLES</td><td>± -</td></tr> </table>		0 PLC	± -	1 PLC	± -	2 PLC	± 0.25 [.010]	3 PLC	± -	4 PLC	± -	ANGLES	± -	PRODUCT SPEC 108-2012	TERMINAL, TAB, 4.75 [.187] FASTON,™ MAG-MATE™	
0 PLC	± -															
1 PLC	± -															
2 PLC	± 0.25 [.010]															
3 PLC	± -															
4 PLC	± -															
ANGLES	± -															
MATERIAL: BRASS		FINISH: TIN PLATE	APPLICATION SPEC 114-2067	RESTRICTED TO												
		WEIGHT: -	SIZE: A2	CAGE CODE: 00779												
		CUSTOMER DRAWING	DRAWING NO: 1217004	SCALE: 10:1												
			SHEET: 1 of 1	REV: D2												